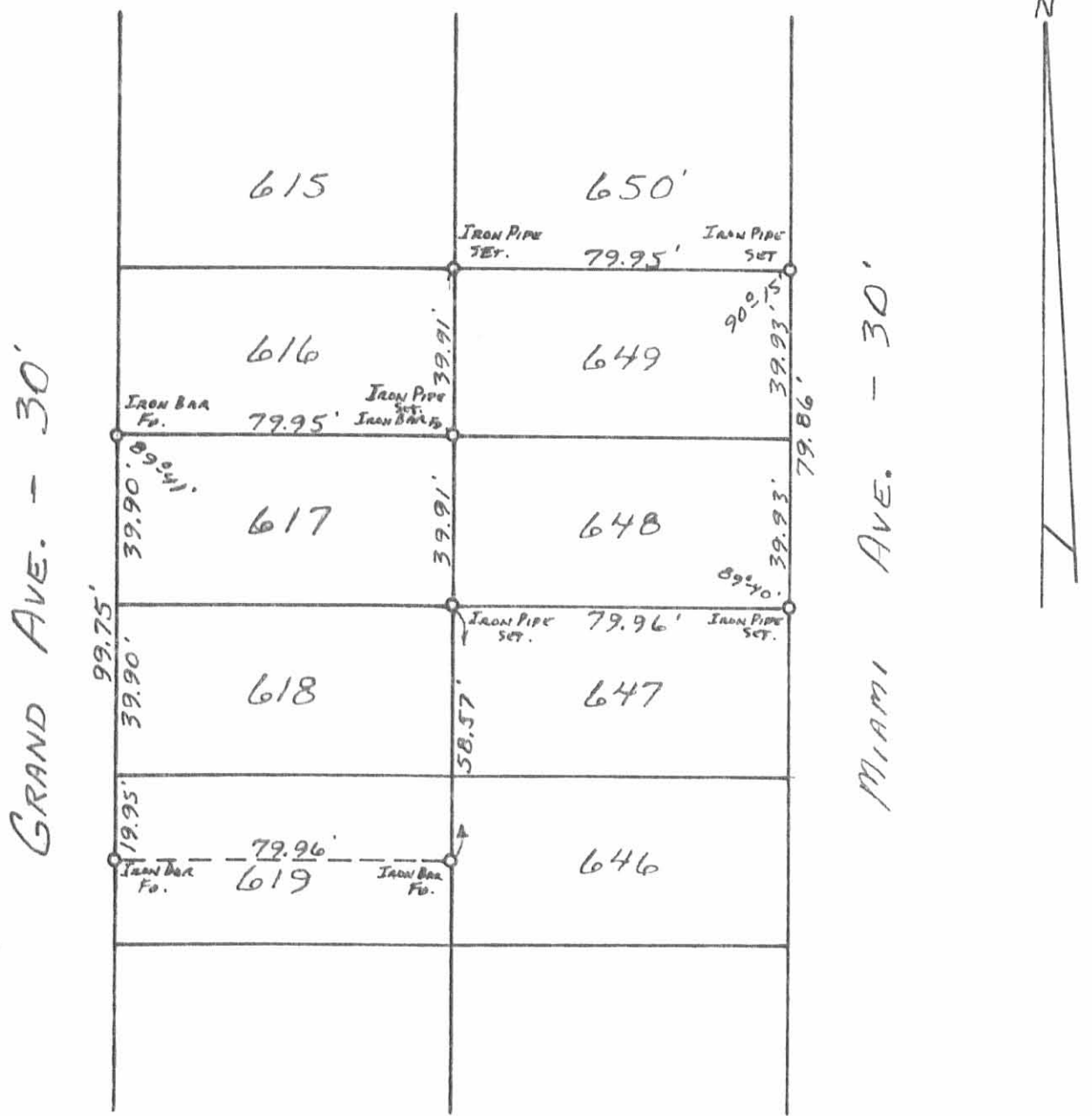


SURVEY OF
 LOTS 613-614-615-616
 RUSSELLS POINT, OHIO
 OCTOBER 5, 1974
 SCALE 1" = 50'
 O = 5/8" ϕ BAR SET

INDEXED ON MAP
 6590 IP

DAN L. DOOSON
 REG. SURVEYOR 4270
 BELLEFONTAINE, O



6590 2P

INDEXED ON MAP

STILLWAGON SURVEY
 LOTS 617, 618, 619 Pt., 648, 649
 VILLAGE OF RUSSELLS POINT
 WASHINGTON TOWNSHIP
 LOGAN COUNTY, OHIO
 MAY 3, 1980

SURVEYED AND PLATTED BY:
 DANIEL E. GILBERT, P.S.
 REG. SUR. NO. 5402
 1041 N. MAIN ST.
 BELLEFONTAINE, OHIO 43311

SCALE: 1" = 40'