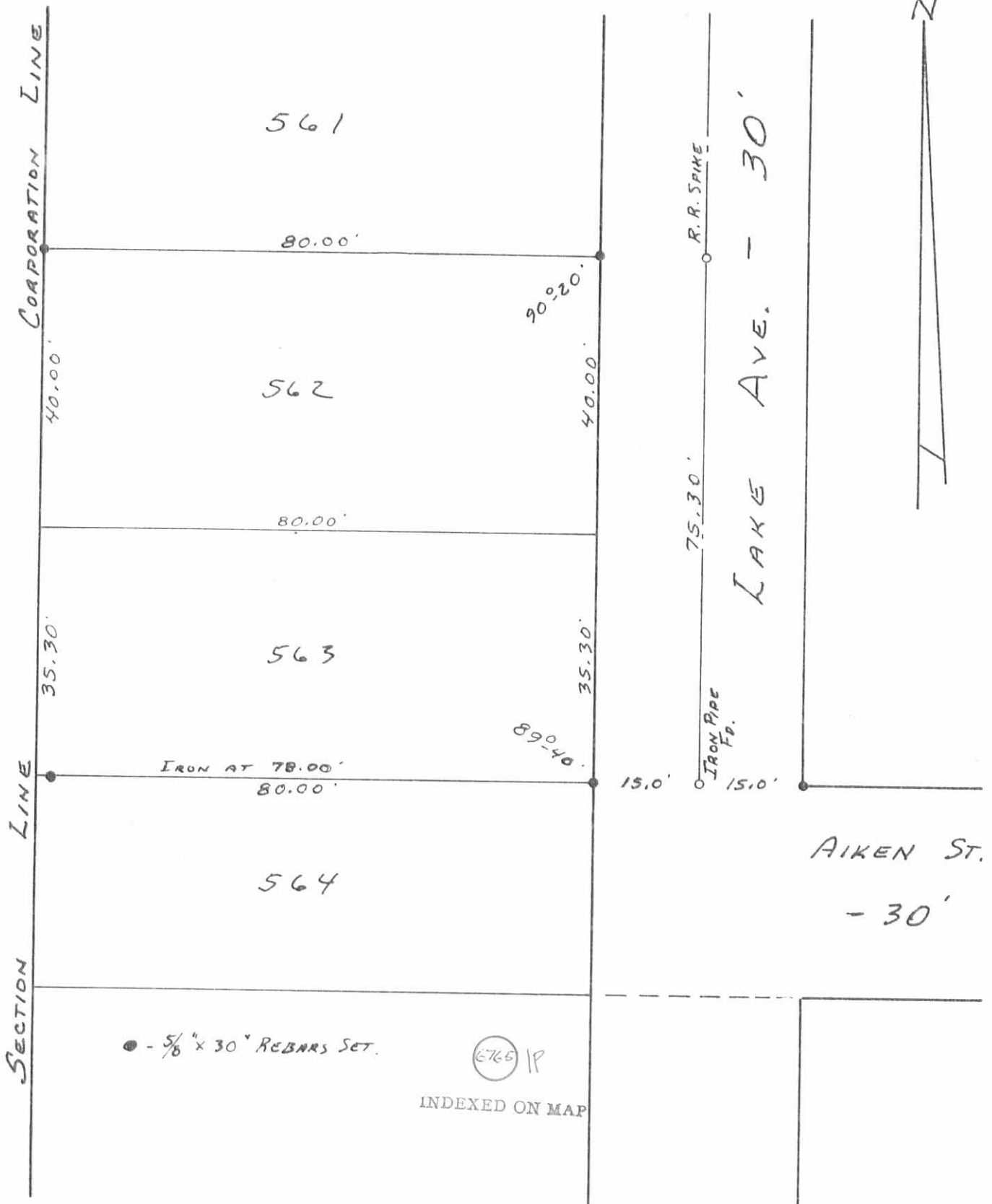


SEC. 2 T.7S. R.8E.



SURVEYED AND PLATTED BY:
 DANIEL E. GILBERT, P.S.
 REG. SUR. NO. 5402
 1041 N. MAIN ST.
 BELLEFONTAINE, OHIO 43311

SAMPLEY SURVEY
 LOTS 562 - 563
 VILLAGE OF RUSSELLS POINT
 SECTION 1 T.7S. R.8E.
 WASHINGTON TOWNSHIP
 LOGAN COUNTY, OHIO
 AUGUST 14, 1982
 SCALE: 1"=20'