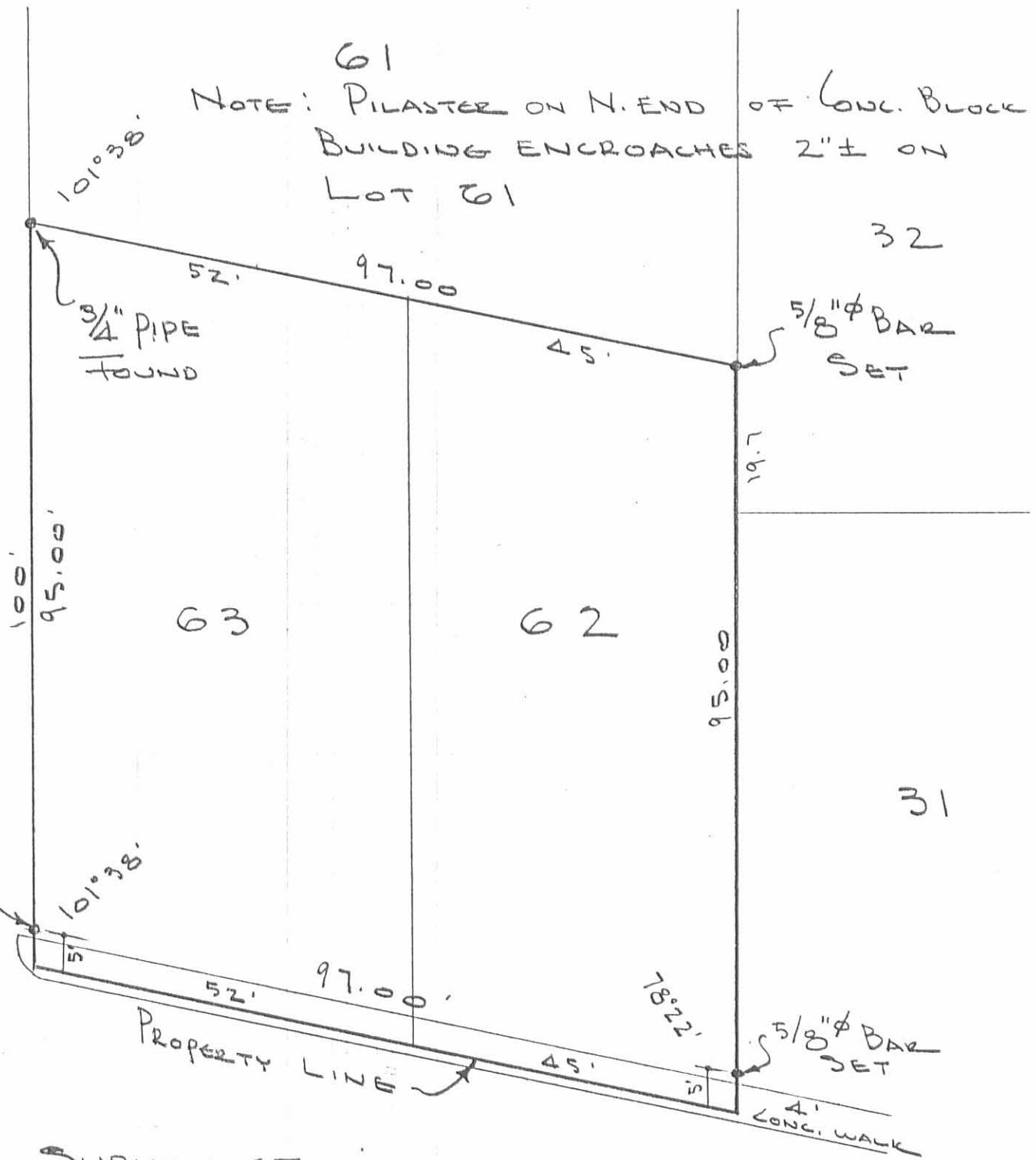


61

NOTE: PILASTER ON N. END OF CONC. BLOCK BUILDING ENCROACHES 2"± ON LOT 61

WARREN AVE. 35'



SURVEY OF

LOT 62 - 63

RUSSELLS POINT, OHIO

JUNE 20, 1981

SCALE 1" = 20'

INDEXED ON MAP  
7576 IP

DAN L. DODSON  
REG. SURVEYOR 4270  
BELLEFONTAINE, O.