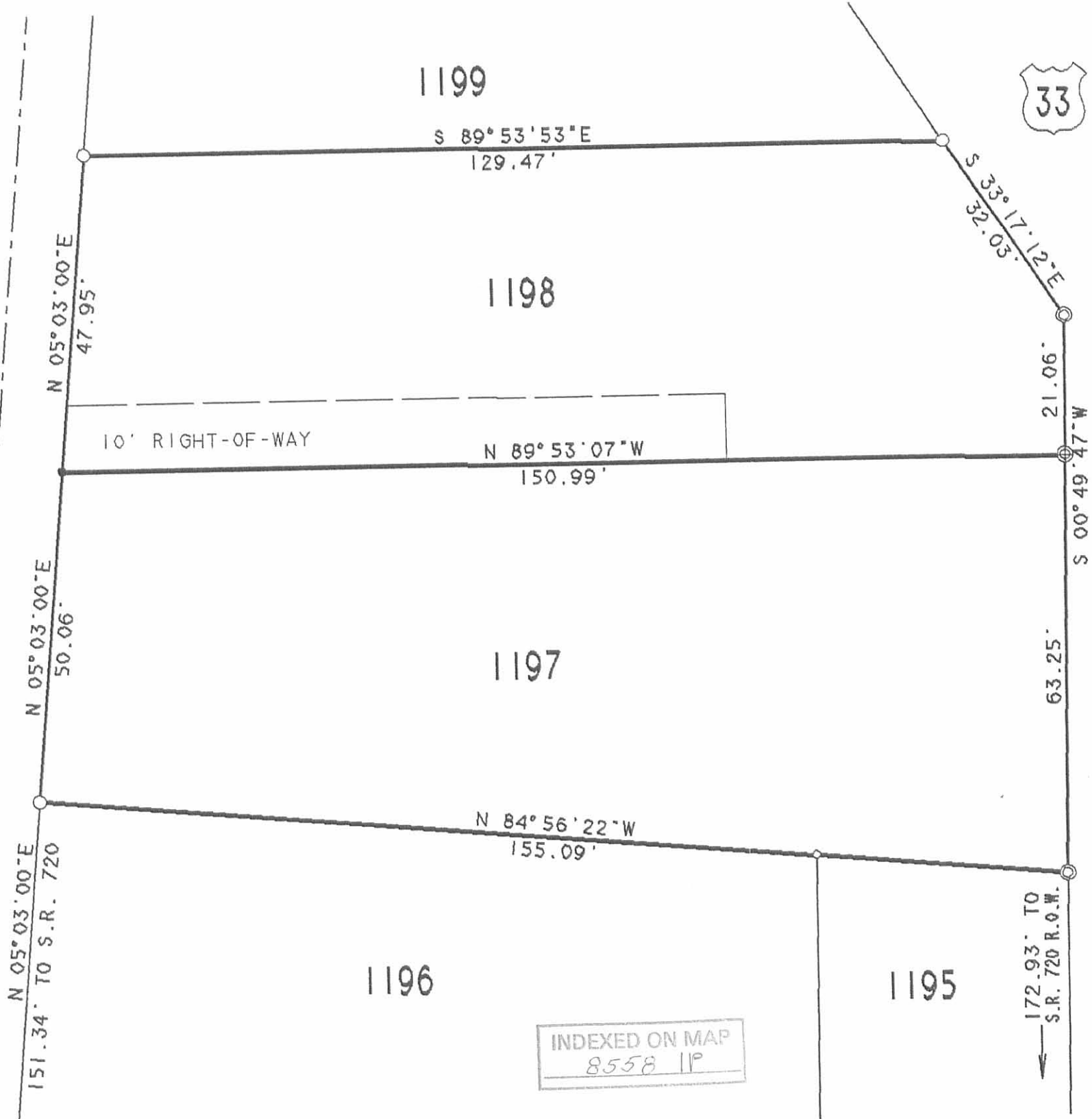
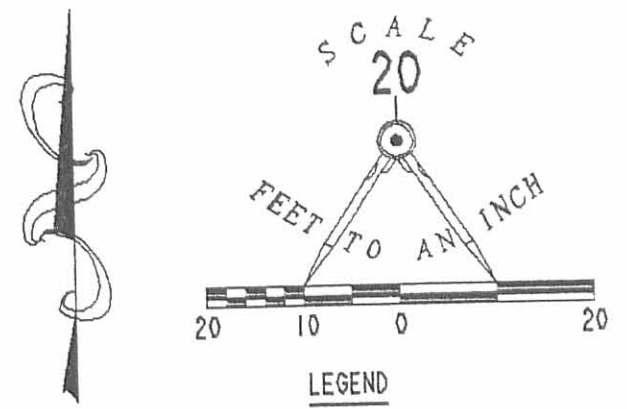


SECOND STREET (20')



INDEXED ON MAP
8558 1P



RETRACEMENT SURVEY OF
 LOTS 1197 & 1198
 COON ALLOTMENT
 SECTION 36, TOWN 6, RANGE 8
 VILLAGE OF RUSSELLS POINT
 WASHINGTON TOWNSHIP
 LOGAN COUNTY, OHIO



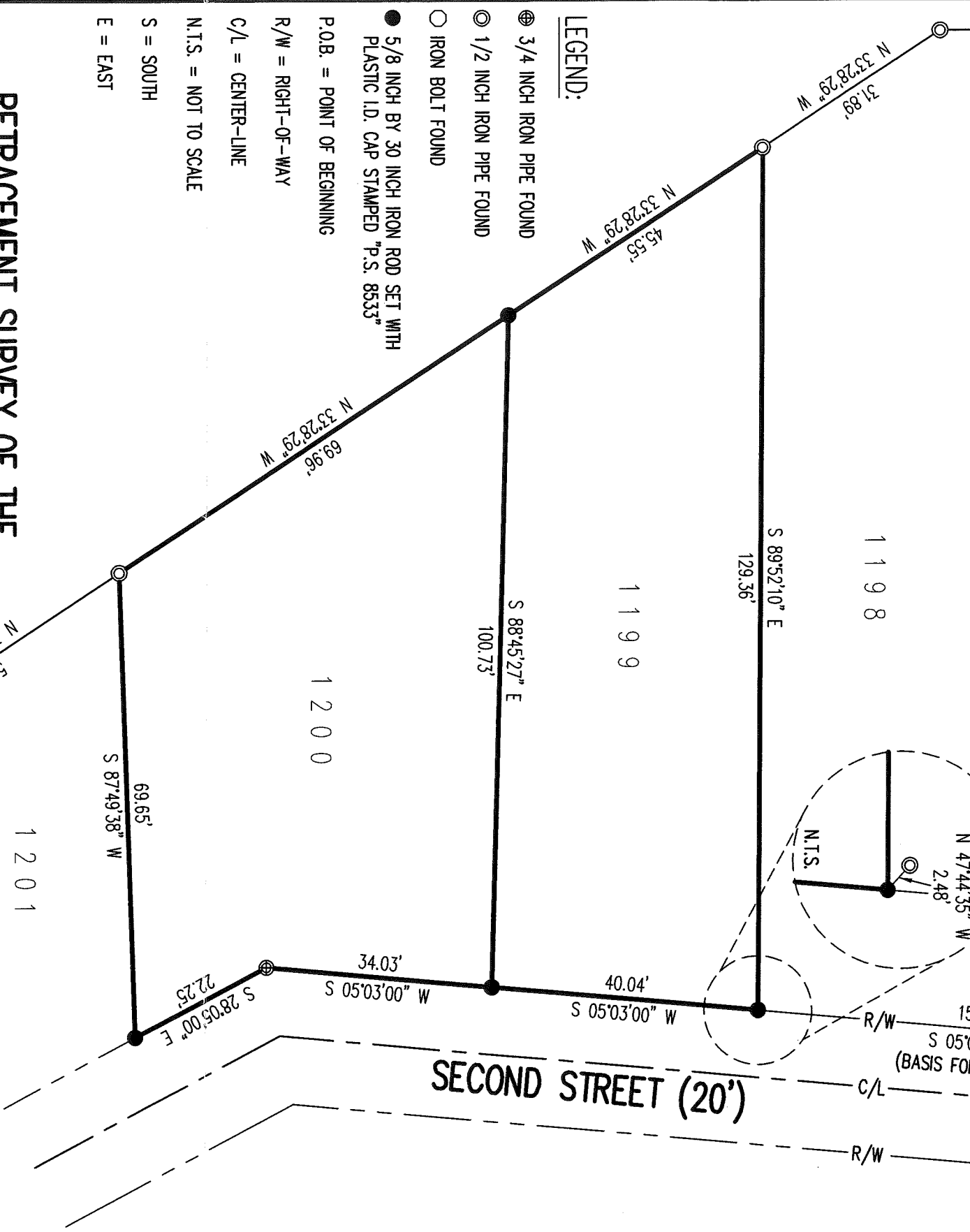
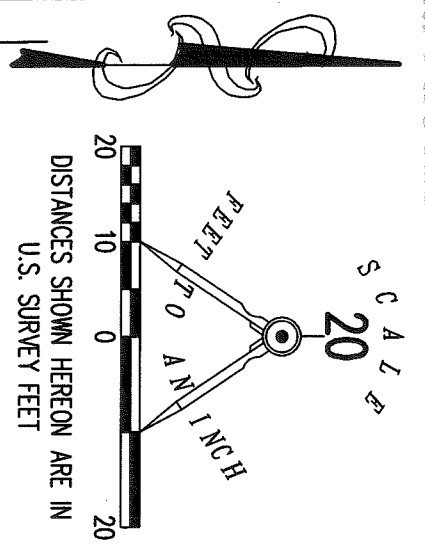
SURVEYED BY:
Jeffrey I. Lee
 JEFFREY I. LEE
 PROFESSIONAL SURVEYOR 6359
 OCTOBER 7, 1991

LEE SURVEYING & MAPPING CO.
 143 East Columbus Avenue
 BELLEFONTAINE, OHIO 43311
 (513) 593-7335

DISK 53 RHEDRICK L 1946-4



APPROVED



LEGEND:

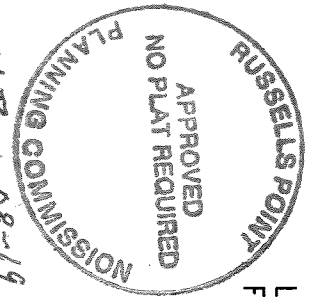
- ⊕ 3/4 INCH IRON PIPE FOUND
- ⊙ 1/2 INCH IRON PIPE FOUND
- IRON BOLT FOUND
- 5/8 INCH BY 30 INCH IRON ROD SET WITH PLASTIC I.D. CAP STAMPED "P.S. 8533"
- P.O.B. = POINT OF BEGINNING
- R/W = RIGHT-OF-WAY
- C/L = CENTER-LINE
- N.T.S. = NOT TO SCALE
- S = SOUTH
- E = EAST

RETRACEMENT SURVEY OF THE
CHAD R. VANVOORHIS
LOTS 1199 AND 1200
COON ALLOTMENT NUMBER ONE
PLAT CABINET A, SLIDE 369
OFFICIAL RECORD 1215, PAGE 506
SECTION 36, TOWN 6 S, RANGE 8 E
BETWEEN THE MIAMI RIVERS SURVEY
VILLAGE OF RUSSELLS POINT
WASHINGTON TOWNSHIP
LOGAN COUNTY, OHIO

BASIS FOR BEARINGS:

THE BASIS FOR BEARINGS, SHOWN HEREON, IS THE WEST RIGHT-OF-WAY LINE OF SECOND STREET ALONG LOTS 1196-1200, RECORDED IN PLAT CABINET A, SLIDE 369, BEING S 05°03'00" W.

THIS SURVEY WAS PREPARED IN THE ABSENCE OF A COMPLETE AND ACCURATE TITLE SEARCH AND DOES NOT GUARANTEE TITLE.



DEED & SURVEY REFERENCES:

O.R. 1215, PG. 506
 COON ALLOTMENT NUMBER ONE
 PLAT CABINET A, SLIDE 369
 LOGAN COUNTY ENGINEER'S MAP ROOM
 FILE 8558

SURVEYED BY:

DANIEL A. NEER
 PROFESSIONAL SURVEYOR NO. 8533
 DECEMBER 00, 2018

LEE SURVEYING & MAPPING CO.

117 North Modriver Street
 BELLEFONTAINE, OHIO 43311
 (937) 593-7335
 W.W. LEE - SURVEYING.COM
 surveys@lee-surveying.com
 L-6462-3

INDEXED ON MAP
 8558

2 WORKING DAYS
BEFORE YOU DIG
 CALL TOLL FREE **800-362-2764**
 OHIO UTILITIES PROTECTION SERVICE.