

Rec 9-4-08



1/2" IRON PIPE
FO

THIRD ST. 12'

3/4" IRON PIPE
FO

68.70'

41.00'

5/8" IRON PIPE
FO

LOT 1221

LOT 1222

LOT 1223

56.16'

65.40'

89°56'00"

90°08'00"

39.87'

3/4" IRON PIPE
FO

3/4" IRON PIPE
FO

PRATER ST. 24'

SURVEY OF LOT 1222 'N COON
ALLOTMENT No 2 - RUSSELLS
POINT, OH. FOR MATT CAMPBELL.

SEPT. 2, 2008
SCALE: 1" = 10'



Leslie H. Geeslin
RUSHSVANIA, OH
Ph 937-462-7265

CAB A SLIDE 371

INDEXED ON MAP
8723 1P





Lee Surveying and Mapping Co.

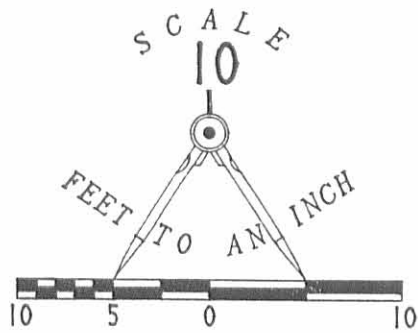
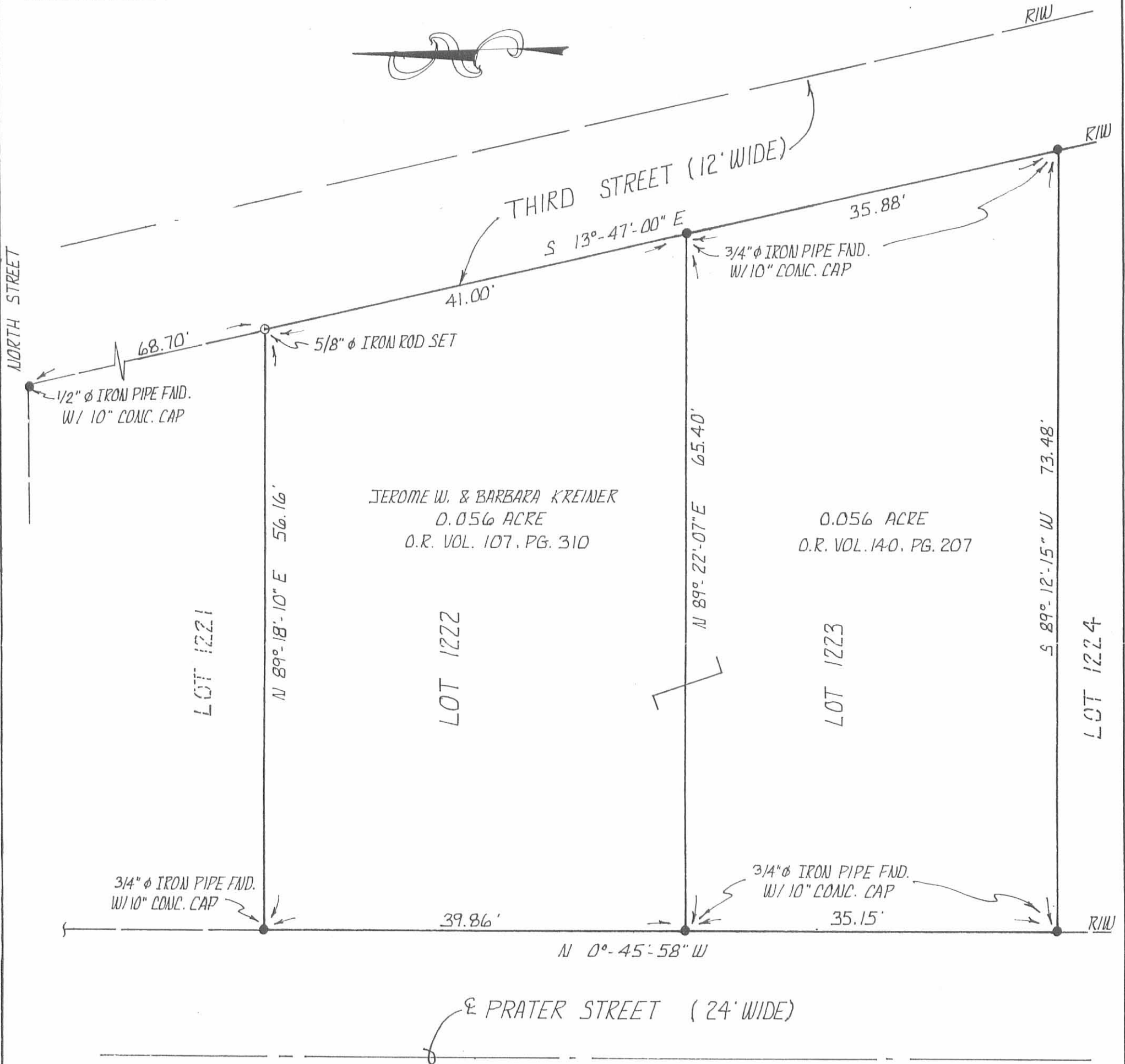


Farm Surveys • Lot Surveys • Topography • Subdivisions • Construction Layout

143 EAST COLUMBUS AVENUE
BELLEFONTAINE, OHIO 43311

(513) 593-7335

JEFFREY I. LEE, P.S.



RETRACEMENT SURVEY OF THE JEROME W. & BARBARA KREINER
 LOT NUMBERS 1222 & 1223 (O.R. VOL. 107, PG. 310 & O.R. VOL. 140, PG.
 207, RESPECTIVELY) OF COON ALLOTMENT NUMBER TWO
 VILLAGE OF RUSSELLS POINT
 WASHINGTON TOWNSHIP
 LOGAN COUNTY, OHIO

REFERENCES:

- 1) PLAT OF COON ALLOTMENT NUMBER TWO
 PLAT BOOK 4, VOLUME D, PAGE 59) IN
 THE OFFICE OF THE LOGAN COUNTY RECORDER

INDEXED ON MAP
 872.3 2P



SURVEYED BY:

Jeffrey I. Lee
 JEFFREY I. LEE
 PROFESSIONAL SURVEYOR 6359
 AUGUST 8, 1992

ORIGINAL STAMP IN GREEN