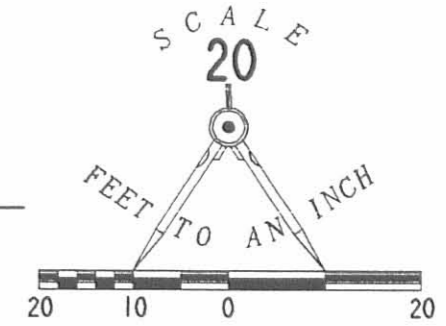


REV'D 6-17-98 *slay*

LOT 203

LOT 202

NORTH STREET (15')



N 89° 37' 06" E 140.90'

40.90'

100.00'

N 02° 24' 06" W

39.76'

0.07 ACRE

N

N 00° 01' 30" W

39.76'

LOT 242

0.128 ACRE TOTAL  
OF WHICH 0.091 AC IS IN LOT 242  
AND 0.037 AC IS THE 0.07 AC TRACT

S 00° 00' 00" E

39.25'

99.98'

S 89° 39' 30" W 139.23'

WESTVIEW STREET (20')

LOT 241

LEGEND

- 5/8" IRON ROD SET
- ⊙ LARGE NAIL IN ASPHALT FOUND

REFERENCE

LOGAN COUNTY RECORDERS PLAT OF  
PRATERS SUBDIVISION  
PLAT CABINET A, SLIDE 178

HERBERT WILLIAMS, JR.  
AND LAURA E. WILLIAMS  
10.28 ACRES  
O.R. 249, PG. 822

MIRIAM AIKEN  
0.07 ACRE  
O.R. 334, PG. 287

LOT 243

RETRACEMENT SURVEY  
OF THE O.D. EASTERDAY  
AND JANICE H. EASTERDAY  
0.07 ACRE TRACT AND LOT 242  
VOLUME 405, PAGE 337  
PRATERS SUBDIVISION  
PLAT CABINET A, SLIDE 178  
SECTION 35, TOWN 6, RANGE 8  
VILLAGE OF RUSSELLS POINT  
WASHINGTON TOWNSHIP  
LOGAN COUNTY, OHIO

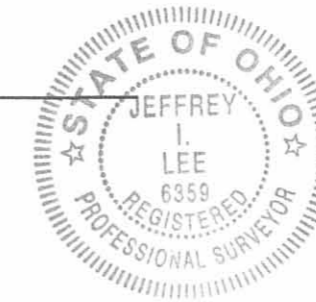
LOT 244

LOT 239

LOT 245

LOT 238

INDEXED ON MAP  
9198 IP



SURVEYED BY:

*Jeffrey I. Lee*  
JEFFREY I. LEE  
PROFESSIONAL SURVEYOR 6359  
JUNE 16, 1998

COPYRIGHT 1998 BY:  
LEE SURVEYING & MAPPING CO., INC.  
117 North Madriver Street  
BELLEFONTAINE, OHIO 43311  
(937) 593-7335

ORIGINAL STAMP IN GREEN

D 328 KHOBERT

L-2654-3

2 WORKING DAYS

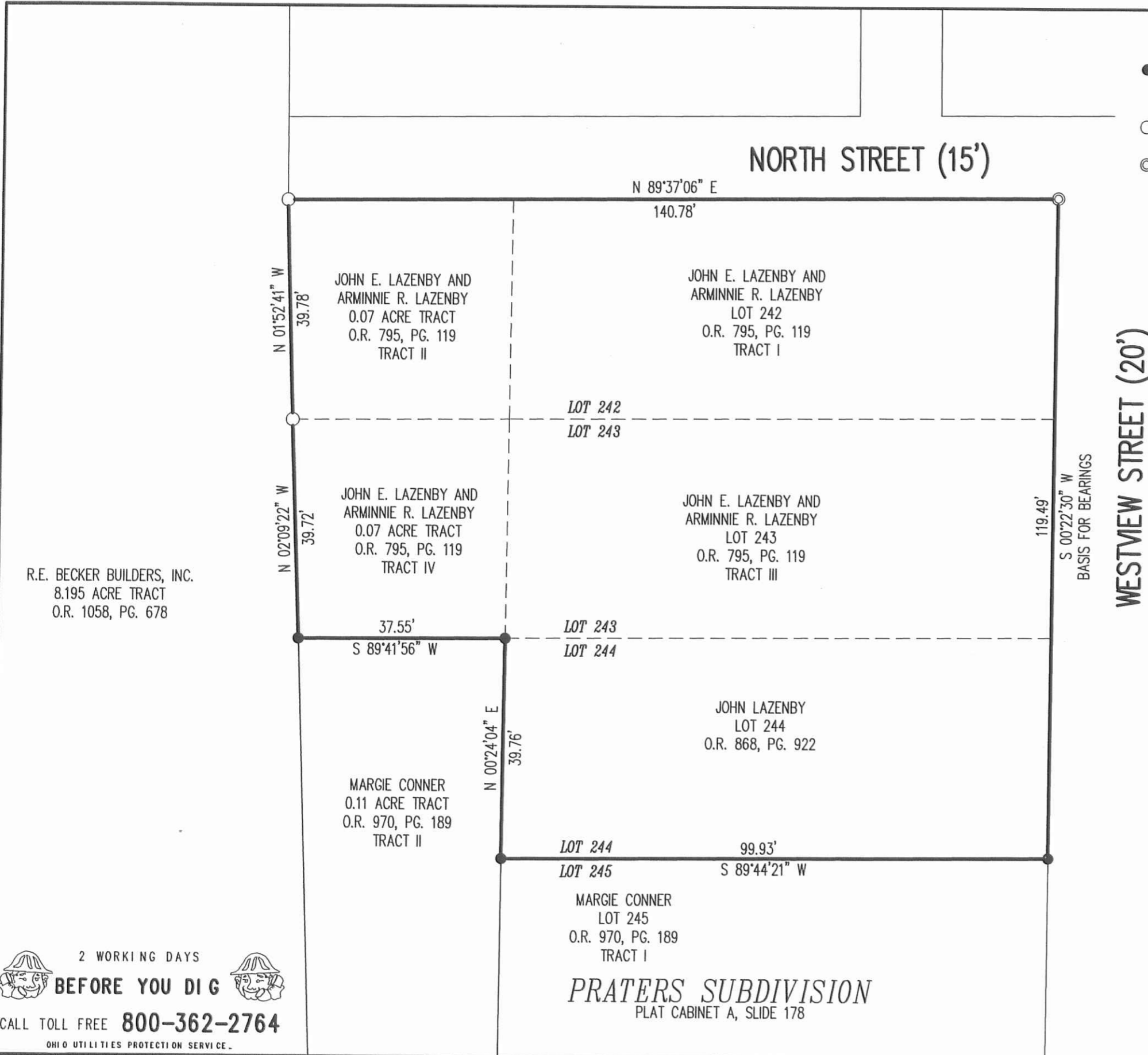
BEFORE YOU DIG

CALL TOLL FREE 800-362-2764

OHIO UTILITIES PROTECTION SERVICE.

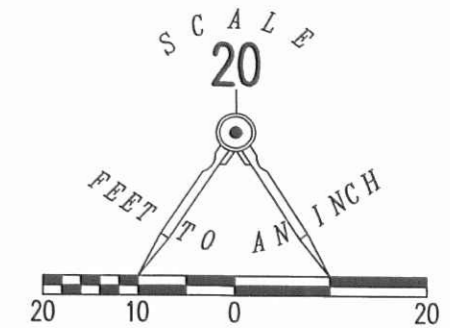
✓ APPROVED

9-16-13



LEGEND

- 5/8 INCH IRON ROD SET WITH PLASTIC I.D. CAP STAMPED "LSM7437"
- 5/8 INCH IRON ROD FOUND
- ⊙ NAIL FOUND



RETRACEMENT SURVEY OF THE  
 JOHN E. LAZENBY AND ARMINNIE R. LAZENBY  
 LOT 242, 0.07 ACRE, LOT 243 AND 0.07 ACRE  
 OFFICIAL RECORD 795, PAGE 119  
 TRACTS I, II, III AND IV  
 AND JOHN LAZENBY  
 LOT 244  
 OFFICIAL RECORD 868, PAGE 922  
 PRATERS SUBDIVISION  
 PLAT CABINET A, SLIDE 178  
 SECTION 35, TOWN 6, RANGE 8  
 VILLAGE OF RUSSELLS POINT  
 WASHINGTON TOWNSHIP  
 LOGAN COUNTY, OHIO

SURVEYED BY:

*William K. Bruce*

WILLIAM K. BRUCE  
PROFESSIONAL SURVEYOR 7437  
SEPTEMBER 6, 2013



ORIGINAL STAMP IN GREEN

COPYRIGHT 2013 BY:  
**LEE SURVEYING & MAPPING CO., INC.**  
 117 North Madriver Street  
 BELLEFONTAINE, OHIO 43311  
 (937) 593-7335  
 WWW.LSMINC.US  
 surveys@lsminc.us

ADW D0713 26540713 L-2654-3

R.E. BECKER BUILDERS, INC.  
8.195 ACRE TRACT  
O.R. 1058, PG. 678

2 WORKING DAYS  
**BEFORE YOU DIG**  
 CALL TOLL FREE **800-362-2764**  
 OHIO UTILITIES PROTECTION SERVICE

INDEXED ON MAP  
 9198 ZP