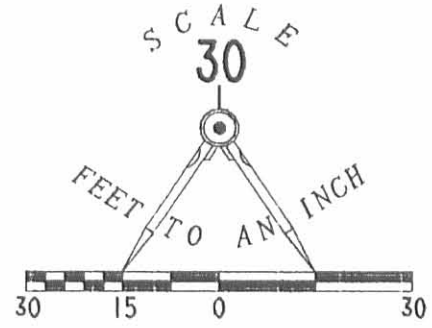


LEGEND

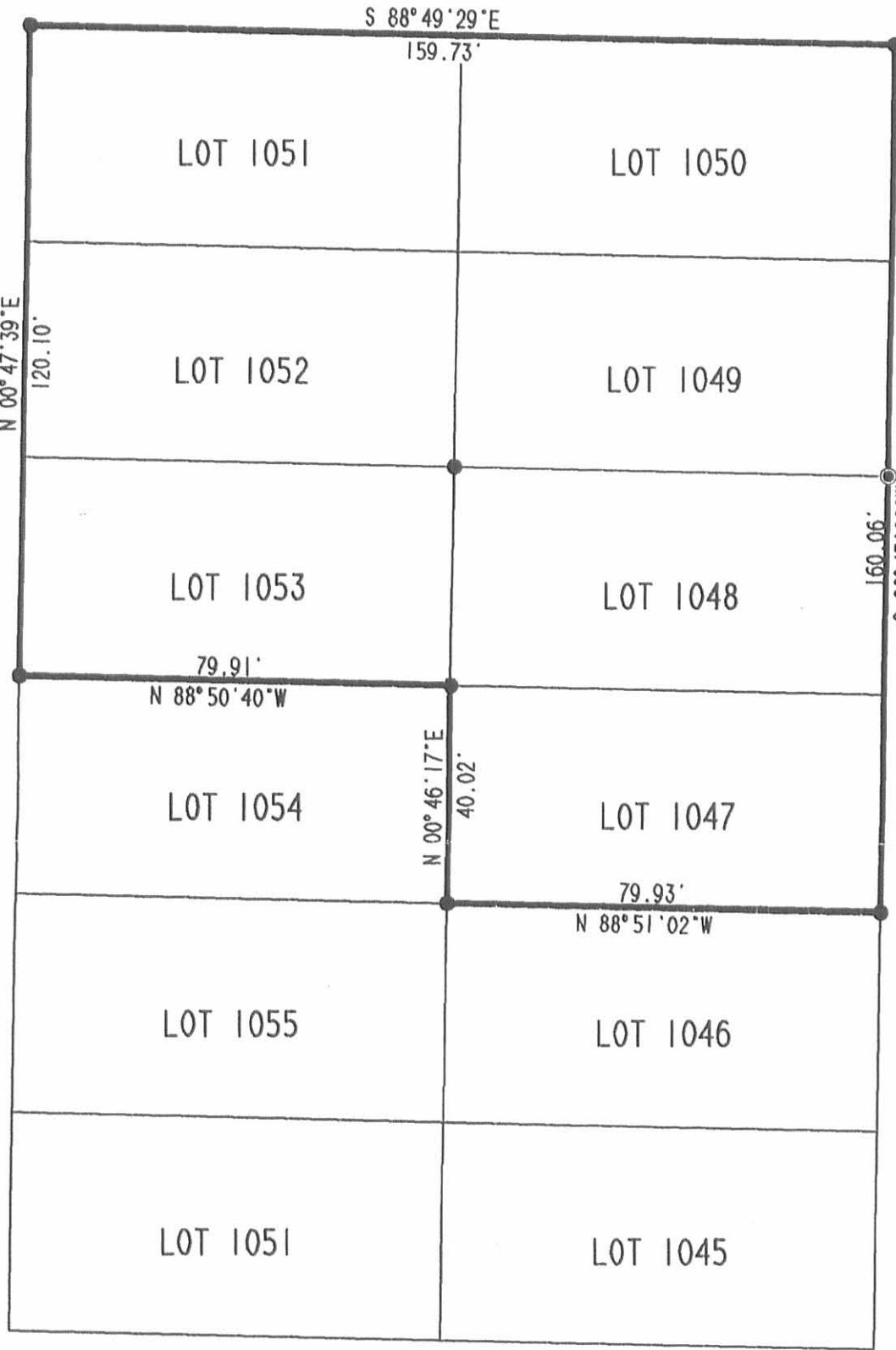
- 5/8 INCH IRON ROD SET
- ⊙ MAG NAIL SET
- 1/2 INCH IRON PIPE FOUND



CLINE STREET (30')

GRAND AVENUE (30')

MIAMI AVENUE (30')



RETRACEMENT SURVEY OF
 LOTS 1047-1053 OF
 MORNING SITE ADDITION NO. 2
 PLAT CABINET A. SLIDE 240
 SECTION 1, TOWN 7, RANGE 8
 VILLAGE OF RUSSELLS POINT
 WASHINGTON TOWNSHIP
 LOGAN COUNTY, OHIO

92881P



SURVEYED BY:
[Signature]
 JEFFREY I. LEE
 PROFESSIONAL SURVEYOR 6359
 NOVEMBER 9, 1999

COPYRIGHT 1999 BY:
 LEE SURVEYING & MAPPING CO., INC.
 117 North Madriver Street
 BELLEFONTAINE, OHIO 43311
 (937) 593-7335

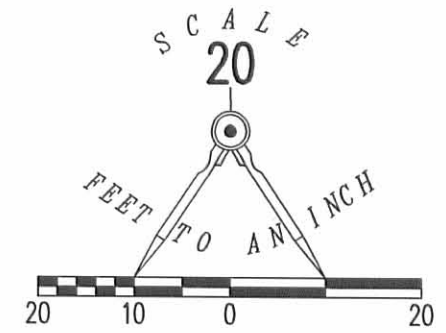
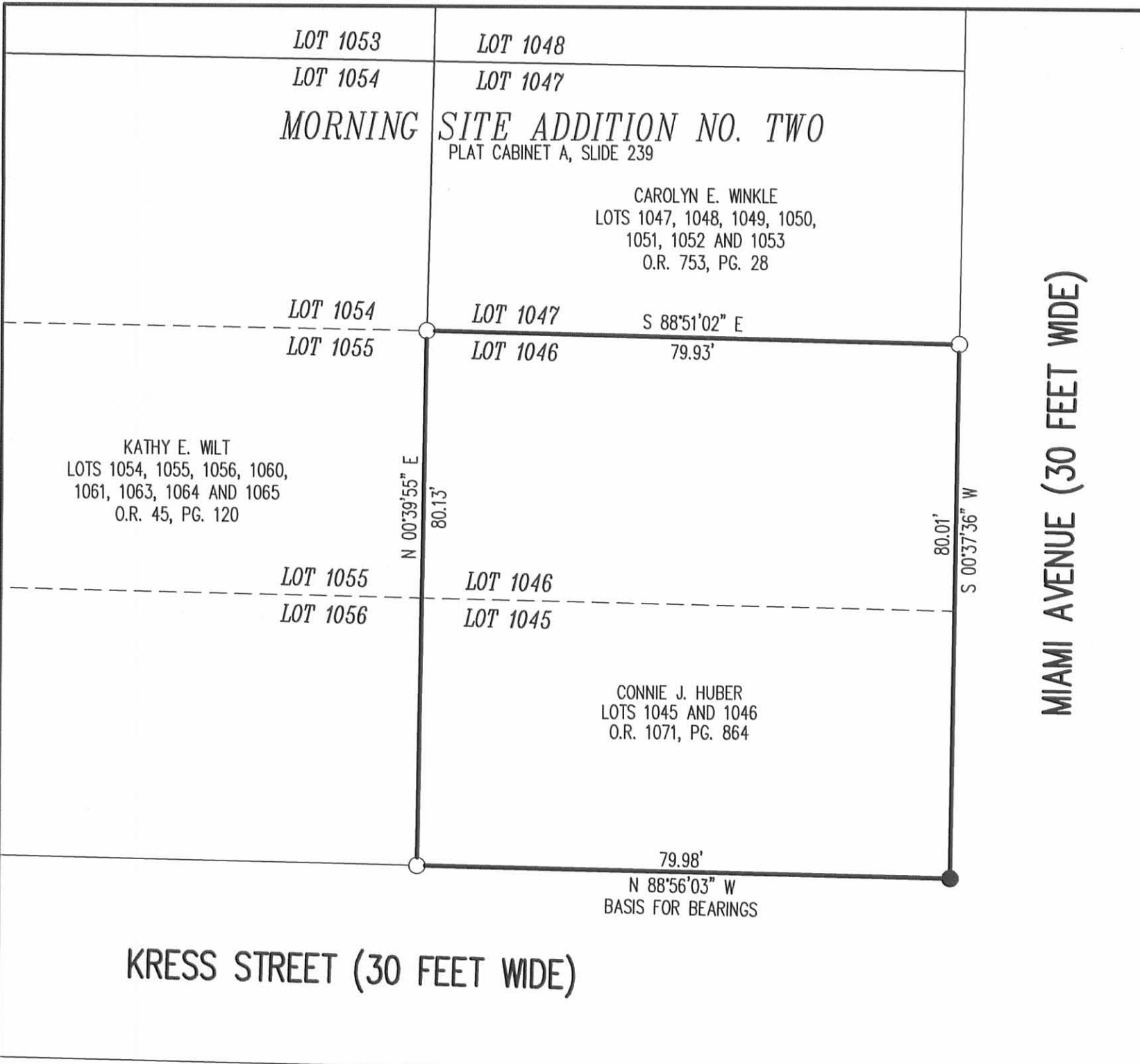
2 WORKING DAYS
BEFORE YOU DIG
 CALL TOLL FREE **800-362-2764**
 OHIO UTILITIES PROTECTION SERVICE.

ORIGINAL STAMP IN GREEN

D 363 WINKLE

L-2842-3

REV'D 9-20-12 *SM/BL*



- LEGEND
- 5/8 INCH IRON ROD SET WITH PLASTIC I.D. CAP STAMPED "LSM7437"
 - 5/8 INCH IRON ROD FOUND

RETRACEMENT SURVEY OF THE
 CONNIE J. HUBER
 LOTS 1045 AND 1046
 OFFICIAL RECORD 1071, PAGE 864
 MORNING SITE ADDITION NO. TWO
 PLAT CABINET A, SLIDE 239
 VILLAGE OF RUSSELL'S POINT
 WASHINGTON TOWNSHIP
 LOGAN COUNTY, OHIO

SURVEYED BY:



William K. Bruce
 WILLIAM K. BRUCE
 PROFESSIONAL SURVEYOR 7437
 SEPTEMBER 19, 2012

COPYRIGHT 2012 BY:
LEE SURVEYING & MAPPING CO., INC.
 117 North Madriver Street
 BELLEFONTAINE, OHIO 43311
 (937) 593-7335
 WWW.LSMINC.US
 surveys@lsminc.us

ADW D0912 54030912 L-5403-3

2 WORKING DAYS
BEFORE YOU DIG
 CALL TOLL FREE **800-362-2764**
 OHIO UTILITIES PROTECTION SERVICE.

INDEXED ON MAP
9288 2P