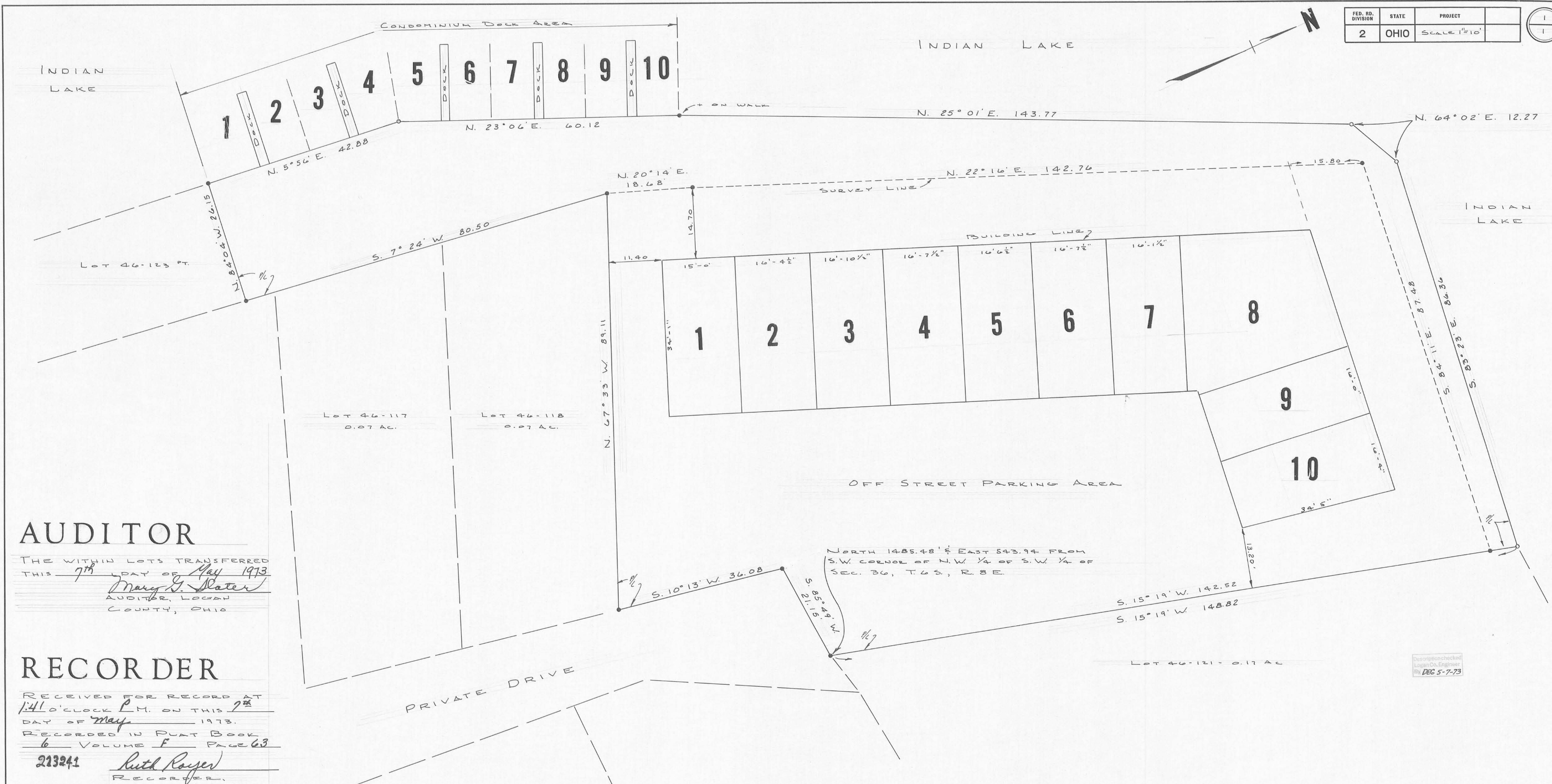
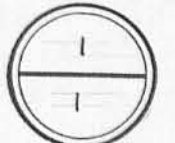


FED. RD. DIVISION	STATE	PROJECT
2	OHIO	SCALE 1"=10'



AUDITOR

THE WITHIN LOTS TRANSFERRED
 THIS 7th DAY OF May 1973
Mary G. Slater
 AUDITOR, LOGAN
 COUNTY, OHIO

RECORDER

RECEIVED FOR RECORD AT
 1:41 O'CLOCK P.M. ON THIS 7th
 DAY OF May 1973.
 RECORDED IN PLAT BOOK
6 VOLUME F PAGE 63
 213241 *Ruth Royer*
 RECORDER,
 LOGAN COUNTY, OHIO

SURVEYOR

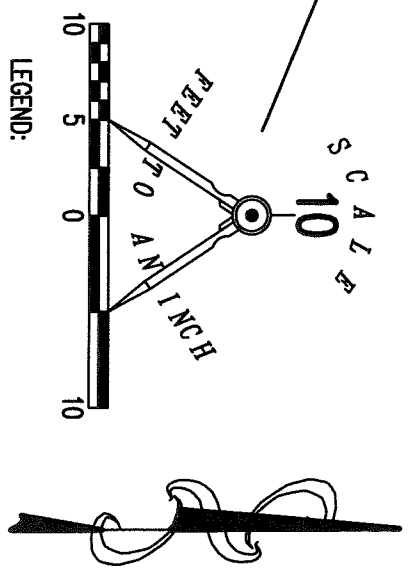
THE ACCOMPANYING PLAT REPRESENTS A SURVEY OF LOTS
 No. 46-120, 46-119 AND PART OF LOT 46-123 IN THE WEST HALF OF
 SECTION 36, TOWN 6 SOUTH, RANGE 8 EAST, INDIAN LAKE
 RESERVOIR LANDS, WASHINGTON TOWNSHIP, VILLAGE OF
 RUSSELLS POINT, OHIO.
 * INDICATES IRON MARKER UNLESS OTHERWISE INDICATED.
 THE TRACT CONTAINS AN AREA OF 0.47 ACRES.
 I HEREBY CERTIFY THAT THIS PLAT IS A CORRECT REPRESENTATION
 OF A SURVEY MADE BY ME ON FEBRUARY 25, 1973.

Larry E. Blosser
 LARRY E. BLOSSER SIT 1199
 Cecil E. Mengelink, P.S. #3151
 CHECKED BY

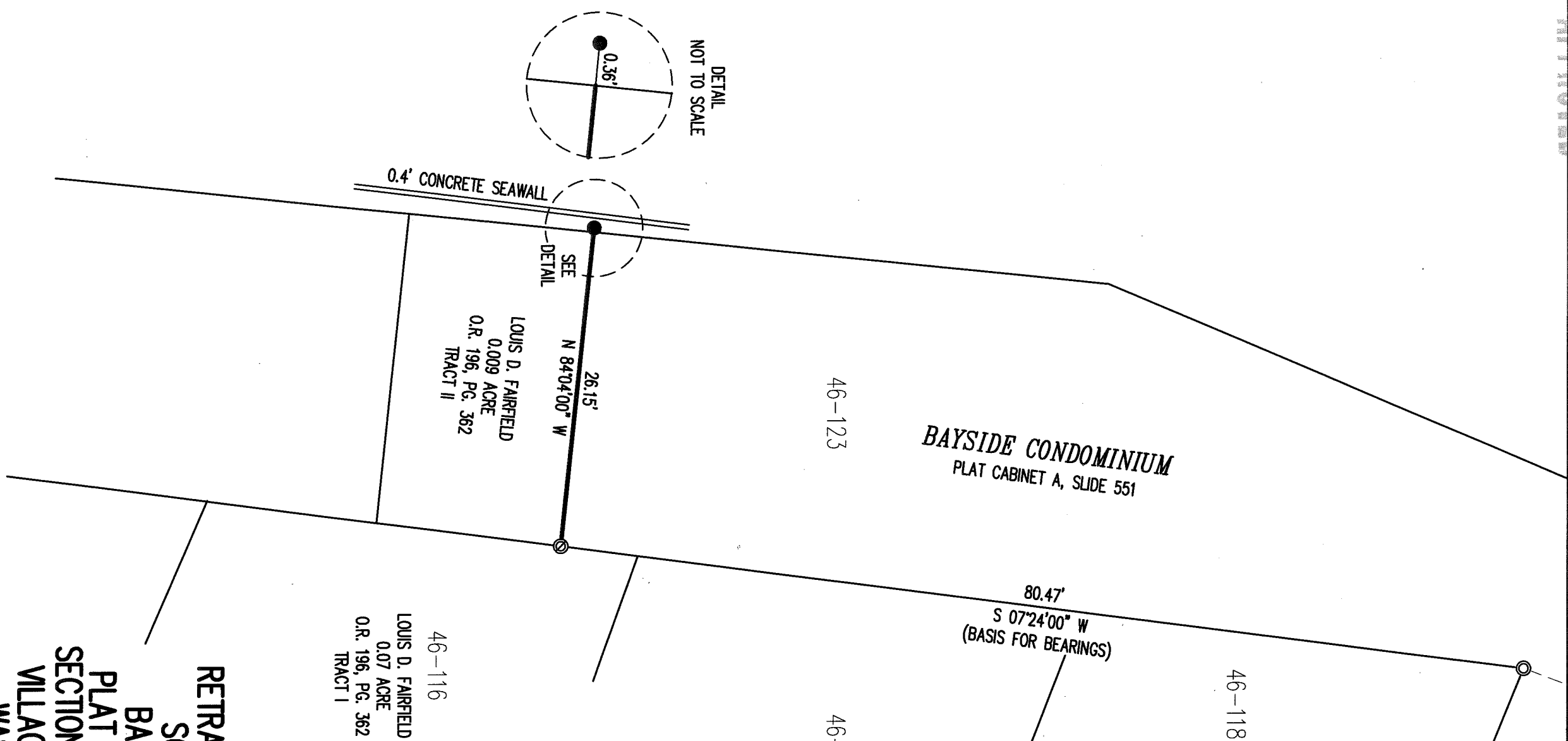
**BAYSIDE CONDOMINIUM
 RUSSELLS POINT, OHIO**

THE UNDERSIGNED CERTIFY THAT THIS DRAWING ACCURATELY
 SHOWS THE BUILDING AS CONSTRUCTED. MAY 6, 1973.

Larry E. Blosser SIT 1199
Cecil E. Mengelink P.S. #3151



- LEGEND:
- ⊙ 1/2 INCH IRON PIPE FOUND UNDER RAILROAD TIE
 - ⊙ 3/4 INCH IRON PIPE FOUND
 - 5/8 INCH IRON ROD SET WITH PLASTIC I.D. CAP STAMPED "LSM"



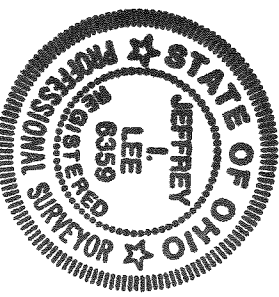
INDEXED ON MAP
9543

RETRACEMENT SURVEY OF A
SOUTH LINE OF THE
BAYSIDE CONDOMINIUM
PLAT CABINET A, SLIDE 551
SECTION 36, TOWN 6, RANGE 8
VILLAGE OF RUSSELLS POINT
WASHINGTON TOWNSHIP
LOGAN COUNTY, OHIO

SURVEYED BY:

Jeffrey I. Lee
JEFFREY I. LEE
PROFESSIONAL SURVEYOR 6359
JULY 7, 2017

COPYRIGHT 2017 BY:
LEE SURVEYING & MAPPING CO., INC.
117 North Madriver Street
BELLEFONTAINE, OHIO 43311
(937) 593-7335
www.lsminc.us
surveys@lsminc.us



THIS SURVEY WAS PREPARED IN THE ABSENCE OF
A COMPLETE AND ACCURATE TITLE SEARCH AND
DOES NOT GUARANTEE TITLE.

2 WORKING DAYS
BEFORE YOU DIG

CALL TOLL FREE **800-362-2764**

OHIO UTILITIES PROTECTION SERVICE

ORIGINAL STAMP IN GREEN

KSS D0617 4140617 L-414-3