

compared

Surveyed for C.M. Faulkner & F. Taylor

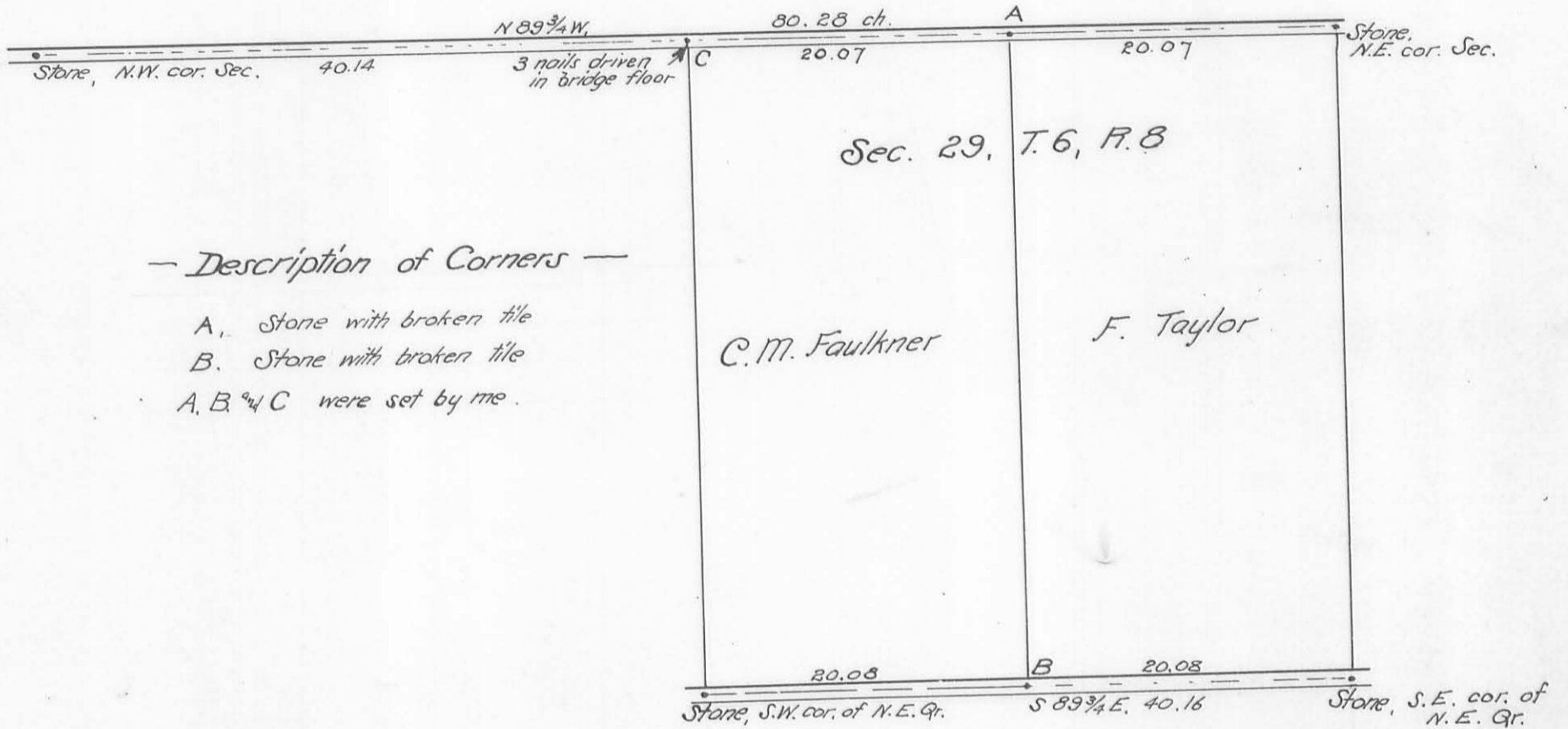
Pt. Sec. 29, T. 6. R. 8

Stokes Township

April, 1907

See Drawer R

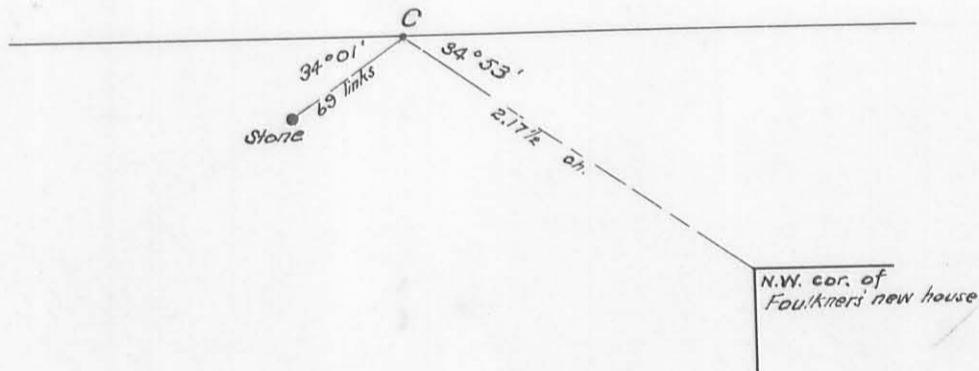
1130 # 1011



- Description of Corners -

- A. Stone with broken tile
- B. Stone with broken tile
- A, B & C were set by me.

Detail at C



159

INDEXED ON MAP

Charles M. Richey
County Surveyor