

Elizabeth Van Doren Tract  
in

Stokes Tp. Logan Co.

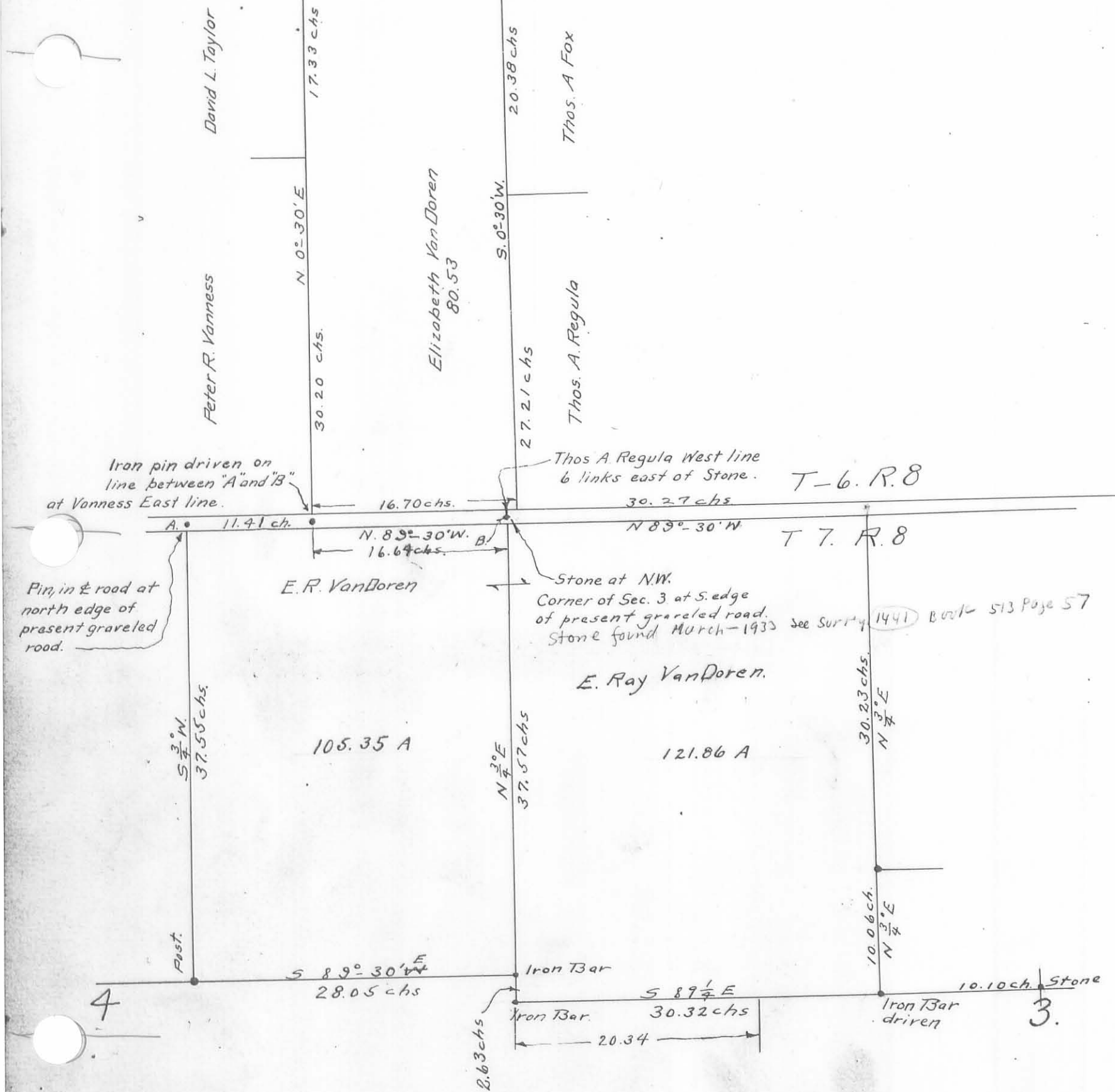
Sec. 33 T. 6. R. 8

Surveyed by O. C. Richey, Co. Surveyor by E. H. Newell Deputy.  
Oct 14, 1919.

North West Corner at David L. Taylor East  
line at dirt road.

NE. Corner at Thos. A. Fox West line in  
center of dirt road.

33



E. Ray Van Doren tract

in

Stokes Tp. Logan Co.

in Sec. 3 and 4 T 7 R 8

Surveyed by O. C. Richey, County Surveyor by  
E. H. Newell Deputy Feb 26 1920