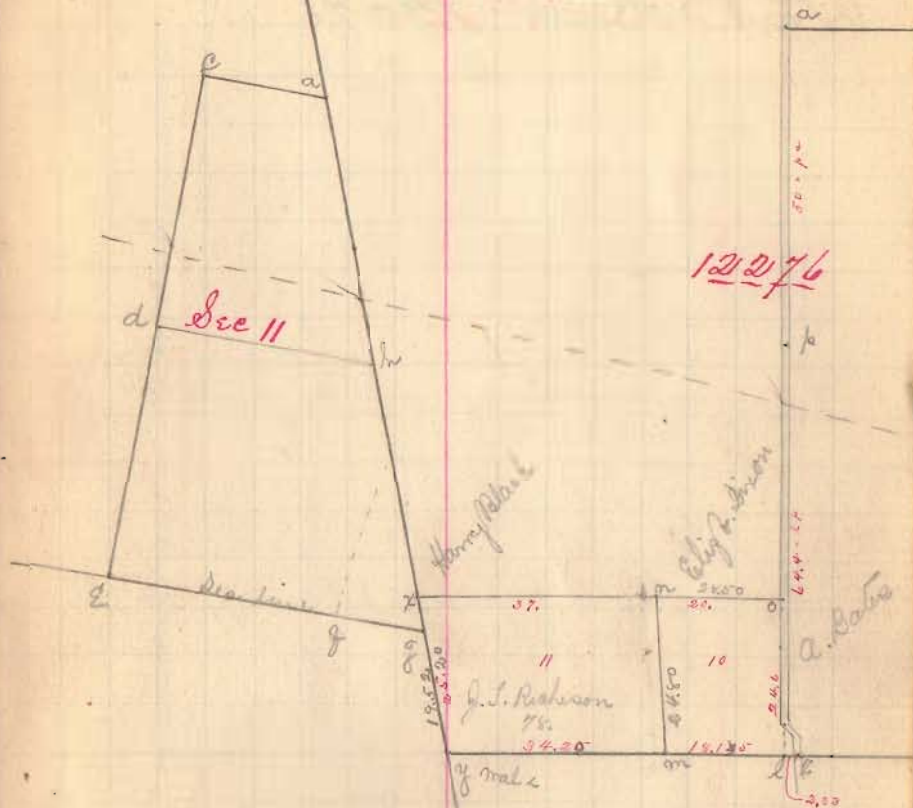


Ouclaize Co.

Sec 11 T6 R8 Aug Pt Durr 12 2 76

Sec 11 T6 R8 Aug Pt Durr 12 2 76  
30 chains per inch



a. Sec 11 = Red Oak 2 1/2" 3 8 7 1/2" or 120' stone in crest side road ditch

541

INDEXED ON MAP

542

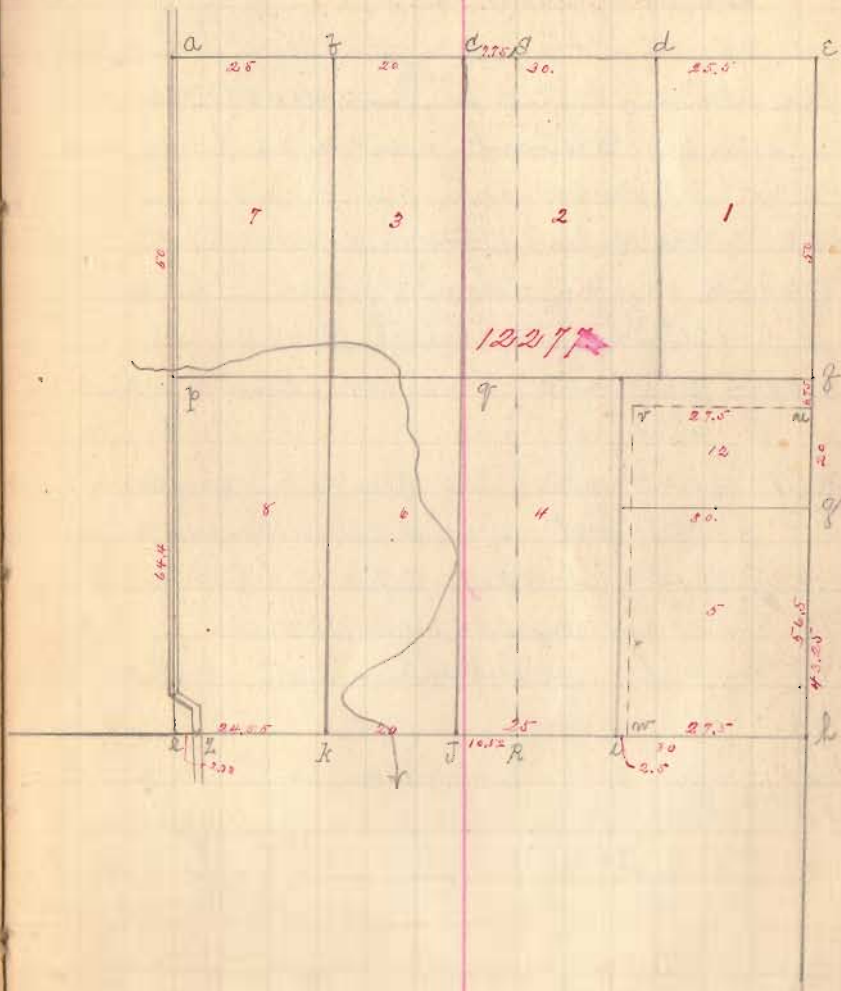
INDEXED ON MAP

Auglaize Co.

S 86.45' E Transit line on co line

Part. Surv 12276

Part Surv. No. 12276.  
30 chains per inch



(542)  
INDEXED ON MAP

## Auglaize, Co

Surr 12276

March 25-85, Start at  $\angle$  d in S line Surr  
 Nit trees standing  $\frac{1}{2}$  way from  $\frac{1}{2}$  road  $\frac{1}{2}$  S 112 19  $\frac{1}{2}$  180 8"  
 S 130 25 links, Westward from  $\angle$  d on Surr line  
 S 81  $\frac{1}{2}$  W S line Surr 12276

4.88 pass stake  $\angle$  to farm lands North8.74 to line Auglaize of Hardin Co at  
129.25 from Scioto River30.07 stone  $\angle$  c. Trees down. Surr decayed 20 ft  
Buck stump 3450.21 pass orig stake and stone  $\angle$  2. ash down and  
out of root. Surr out down stump 4975.42 Surr  $\angle$  in road N 09° 08' 25" 87 1/2 links  
also ash 10 S 45 3/4 W 105 lbs.

with road at line Bates from

S 9 1/4 E Surr  $\angle$ 

43.76 stake N 97. 1/2 Craig from South

49.14 center bridge over hog creek

50.00 opposite hog house on east line Auglaize T  
along S line SurrWestward Start at  $\angle$  l. stake and stone. Buckeye  
standing but dead. Cherry down2.79 pass joint on Surr line =  $\angle$  I old stake still standing  
R.O. 12' - 2 1/2' bar, Surr 12' - 6' W18.15  $\angle$  on Ash. Surr & Elm standing, Elm damaged  
and dying, Ash 25, Surr 20 lbs.

Surr. No 12276.

Start at  $\angle$  on then to  $\angle$  m (see page 59) with marked line  
 at 17.51 cross ditch. At 24.80  $\angle$  on orig stake and stone  
 all Nit trees cut down but stumps and sprouts standing  
 at each. Meas Westward from  $\angle$  m along line Dixon and  
 Robinson 8' each find no corner. At 8' 60  $\angle$  on center of  
 line S line Dixon and Black. Returned to  $\angle$  m and go  
 Westward from there. Start at  $\angle$  m. N to y 34.20 ch  
 at y old oak stumps in good condition

Start at y. southward along Roberts line. 4.54 ch to  
stone S 2  $\angle$ 

Start at y. S 20 1/2 W with Roberts line

pass stake N 27. 1/2 Craig Mar 5-85 at 2.62 ch

19.02 ch stone in Roberts S 2  $\angle$  to see 11-6-6

22.72 like S 2 1/2, 1/2 Craig Mar 5-85.

25.24 ch to elm corner to get 9 = x. stands W of fence <sup>old line</sup>

42.77 stake 3 1/2 Craig Mar 5-85

57.39 Co line bet Stakes

62.14 grass line W of Beatty S line

72.54 old Transit line

105.08 S 2 cor Rec 11

March 27 1885 set stake in Roberts line at  $\angle$  x

at 4 links west from old elm 12" di cor. true Bates Surr.

Durr 12 2 76.

## Old bearings for corners.

From Durr by S. H. Buchanan Dec 20<sup>th</sup> 1876.

- A = Hick 9" N 33 1/4 W 57    " of Swamp Oak 10" S 33 E 76  
 B = Lymn 7" S 5 W 49    "    "    " 8" N 6 1/2 W 35  
 C = Beech 12" S 8 1/2 W 84    " Lion Wood 5" N 55 1/4 E 20  
 D = Lymn (3 from 1 root) N 11 1/2 E 19    " Burr Oak 5" S 13 W 35  
 E = Oak 30" S 65 1/2 E    " of Hick 12" S 53 W 8    " of Hick old mark    " of Beech 16" N 27 1/2 E 15  
 F = Swamp Oak 14" (2 from 1 root) N 57 1/2 E 15    " of Swamp Oak 5" S 10 W 33  
 G = White Oak 20" N 8 W 34    " of White Oak 10" S 8 1/2 W 17  
 H = Red Elm stake 2 1/2" square, in open prairie  
 I = Swamp Oak 9" N 17 W 23    " of Swamp Oak 12" S 42 E 7  
 J = Beech 20" N 43 W 17    " White Oak 10" N 61 E 53  
 K = Beech 18 (old line mark) N 2 W 7    " Beech 20" S 11 W 19  
 L = Cut branch S 50 1/4 W 22    " of W Cherry 8" N 41 W 43    " of Buckeye 6" N 76 E 43  
 M = Elm 5" N 61 1/4 W 24    " of Oak 10" N 11 W 25    " of Lymn 10" S 75 1/2 E 20  
 N = "cornus tree" Oak 7" S 14 E 3    " of Oak 15" N 55 E 15    " of Hick 4" S 85 N 10  
 O = oval stake in road S E corner lot N 29  
 P = Dye 14" N 16 1/53    " of Elm 10" N 57 1/4 E 107    " of Cut Hog oak N 29 1/4 E 150  
 Q = Lymn 9" N 75 1/2 W 33    " of Hick 12" S 60 W 25 1/2    " of Lymn 8" S 20 E 33    " of Oak 13" N 12 1/2 E 44  
 R = Elm 8" N 41 E 19 1/2    " of Swamp oak 10" N 31 1/2 W 27 1/2  
 S = Hick 10" S 52 E 9 1/2    " of Burr Oak 12" N 6 E 34 1/2  
 X = old marked elm corner tree and stake S W corner to lot N 29  
 Y = old walnut stump Durr corner in Roberts Line  
 A to C S 9 1/4 E, C to E N 8 W, A to E N 51 E, C to H N 50 1/4 E  
 A to Craig Stone N 110 1/2 W 2 1/4 3/4 8 1/2 Dec, Oak 7 N 40 W 105  
 J = Red O    " N 33 E 2 1/4    " of Lymn 2 from 1 root N 47 1/2 W 6

Durr No 12 2 76