

Anderson Survey.

1934

The following described land in V.M.S. 12276 and also Section 14, Town 6 South, Range 8 East.

Beginning at the N.E. corner of Section 23 at N.E. corner of W.D. Coppersmith's 82.81 acre tract; thence ~~East~~<sup>West</sup> with the South line of Section 14 1288.5 feet to another corner of said Coppersmith; thence with said Coppersmith's East line N.10° 44' E. 1517.5 feet to center of S.H. 232 (State Route 69) and being Station 151+95 as shown on plan L-17 Page 3 of Logan County Plan Records; thence East with center of Road 232 - 1311.0 feet to Metz N.W. corner; thence South to place of beginning, said tract containing 42.67 acres in Section 14 and 6.00 acres in V.M.S. 12276 making a total of 48.67 acres more or less.

No Survey  
Written from office  
deeds and notes  
(see Coppersmith Survey.)

INDEXED ON MAP  
1124

- 1D

46



ATTATCH SUPPLEMENT SHEET A

YOAKAM FARM

Section 23 Town 6 S. Range 8 E. (Supplement Sheet A)  
Section 14 Town 6 S. Range 8 E.

Stokes Township Logan County Ohio.

Tract No. 1 is shown only to account for the Land sold by the State of Ohio to Walters.

State of Ohio to Walters, Logan County Ohio Recorder's Vol. 65 Page 4 Dec. 18, 1882 This deed called for 140.45 Acres Map shows this as Tracts 1-2-3-4-5-

Walters to Coppersmith, Logan County Ohio Recorder's Vol. 133 Page 49 May 24, 1926. This a very similar description. Note Tract No. 1 is not in this transfer. This transfer is tracts 2-3-4-5- and calls for 115 Acres

Viola E. and J.M.Coppersmith to W.D.Coppersmith Logan County Recorder's Vol 148 Page 202 Nov. 26, 1937 This is tract No. 3 and calls for 3 Acres.

Lipley to Anderson Logan County Ohio Recorder's Vol. 161 Page 548 Sept. 13 1938 This is tract No. 5 and calls for 24.47 acres.

WONDERS LINE

This line was ran by J.C.Wonders a Civil Engineer about 1892. It is a base or random line. From this line at certain stations distances were measured to the edge of INDIAN LAKE ( Then Lewistown Reservoir ) to establish the boundary of said lake. I understand the original notes are at Columbus Ohio however a copy is in the Logan County Engineers office and they were used by me to resurvey and reestablish this line as shown on the map. This part was reestablished by me in 1929.

The acres in Tract No. 4 and tract No. 5 was established by calculation from the section line to the Wonders line. From the Wonders line to the edge of INDIAN LAKE was established by a large map drawn to the scale of 60 feet to the inch and using the distances given by Wonders. It is my opinion that this is the only practical way to establish the correct shore line of INDIAN LAKE at this farm or to calculate the acres.

Note that the number of acres sold by the State of Ohio to Walters is more than that by the new survey, also that the Distance given in the deed to Walters from points "A" and "B" to the edge of INDIAN LAKE is slightly greater than that determined by the Wonders Survey. Due to the nature of the shore line this difference is quite natural.

This base line was surveyed by Wonders entirely around INDIAN LAKE and has been recognized and used by The State of Ohio on later surveys.



F.F. Wright  
F.F. Wright  
Feb. 24, 1942.

YOAKAM FARM

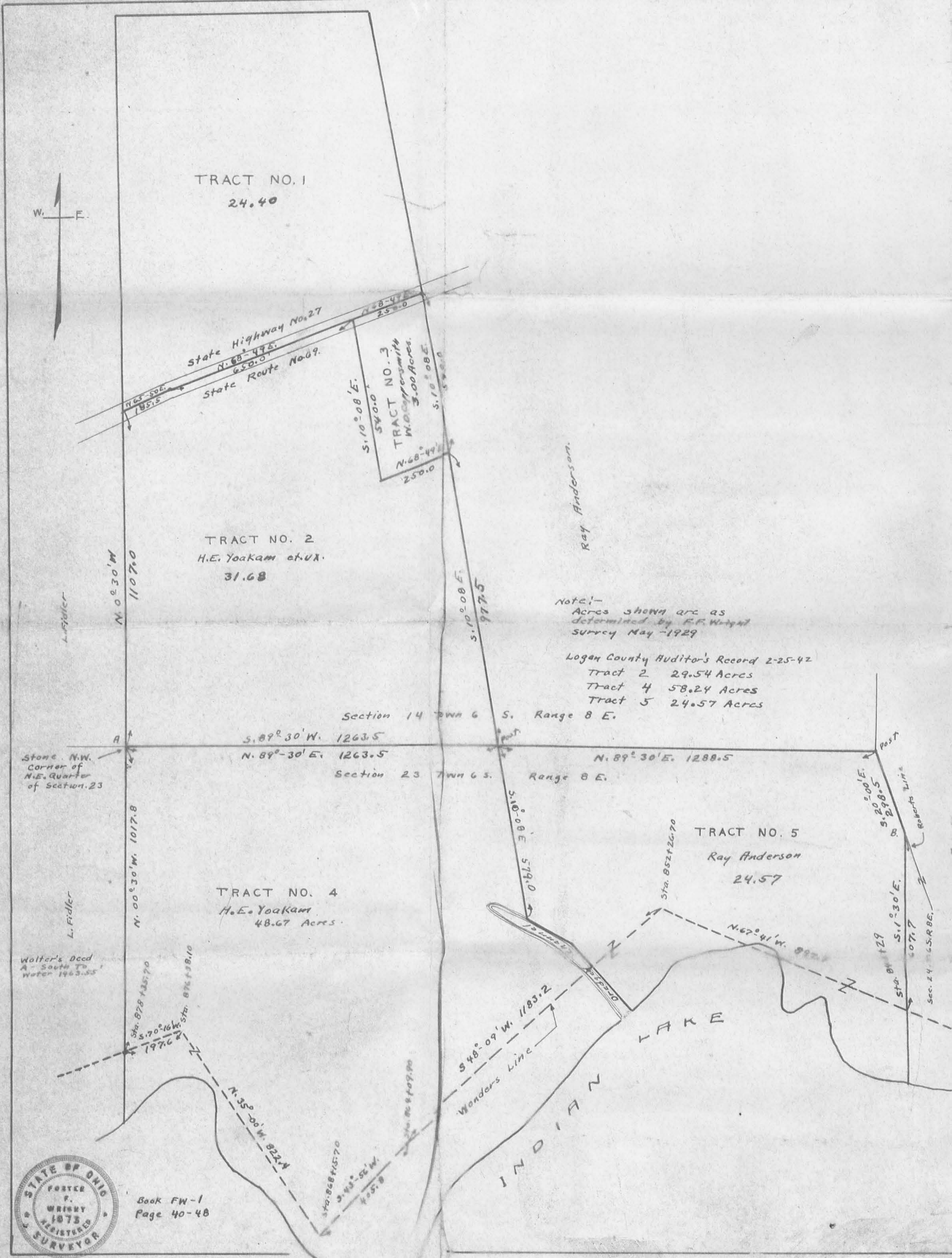
STOKES TOWNSHIP - LOGAN COUNTY OHIO

SECTION 14 TOWN 6 S. RANGE 8 E.  
SECTION 23 TOWN 6 S. RANGE 8 E.

FEB. 1942

1" = 200'

F.F. WRIGHT



Book FW-1  
Page 40-48

1124-1P



1933

- Coppersmith -

Being part of N.E. quarter of fractional section 23,  
Town 6 South, Range 8 East and being in Stokes Township, Logan  
County Ohio.

Beginning at a point at N.E. corner of said section 23,  
thence with the North line of said section S.88° 06' W. 250.0  
feet for the beginning point of this survey; thence ~~continuing~~  
with the North line of section 23 S.88° 06' W. 2302.0 feet to a  
stone at N.W. corner of the N.E. quarter of said section and  
being in L.Fiddler's East line; thence with Fiddler's East line  
S.1° 30' E. 1463.55 feet to Indian Lake; thence with Indian Lake  
Eastwardly to a point in East line of Section 23; thence N.1° 30'  
W. with East line of section 23 712.5 feet to a point at the  
S.E. corner of a 2.6 acre tract and also being 211.5 feet South  
1° 30' E. from the intersection of the East line of section 23  
with the Robert's line; thence S.88° 06' W. 175.10 feet to a  
point; thence N. 20° 0' W. 510.0 feet to the place of beginning,  
said tract containing 79.91 acres more or less and being all of  
the land in Section 23 as describing in Deed Vol.65 Page 4, State  
of Ohio to Walters and also being that tract as shown in Logan  
County Surveyor's Records of Stokes Township as survey No.1124.

→ Excepting a tract of 2.60 acres out  
on N.E. corner of said section 23

INDEXED ON MAP  
1124

-2D

Nov. - 2-1933

15

- Coppersmith -

The following described land in Fractional Section 23, Town 6 South, Range 8 East and being in Stokes Township, Logan County, Ohio.

Beginning at the N.E. corner of said Section 23; thence with the North line of said Section S.88° 06' W. 250.0 feet to a point; thence S.20° 0' E. 510.0 feet to a point; thence N.88° 06'E. 175.1 feet to a point in East line of said section; thence N.1° 30' W. with said section line 211.5 feet to a point in the Robert's line; thence with the Robert's line N.20° 0' W. 289.5 feet to the place of beginning; said tract containing 2.60 acres more or less and being shown in Logan County Surveyor's office in Stokes Township Survey files as part of survey No. 1124.

288-01

INDEXED ON MAP  
1124

-3D

Nov-2-19

- Coppersmith -

Being part of S.E. quarter of Fractional Section 14,  
Town 6 South, Range 8 East and being in Stokes Township, Logan  
County, Ohio.

Beginning at a point in the center of S.H. 232 (State  
Route 69) said point being shown as point "E" in Logan County  
Surveyor's Book 479 Page 42; thence S.68° 49' W. with center  
of S.H. 232 250 feet to a point; thence S.10° 08' E. 540 feet  
to a point; thence N.68° 49' E. 250 feet to a point in Anderson's  
West line; thence with Anderson's West line N.10° 08' 540 feet  
to place of beginning, said tract containing 3.00 acres more or  
less.

INDEXED ON MAP  
1124

-4D

17

- Coppersmith Survey -

Being part of N.E. quarter of Fractional section 23, Town 6 South, Range 8 East and part of S.E. quarter of Fractional Section 14, Town 6 South, Range 8 East and being in Stokes Township, Logan County, Ohio.

Being the same land as shown in Logan County Deed Vol.65, Page 4, State of Ohio to Walters except 25 acres lying North of the center of S.H. 232 (Route 69) and also excepting 3.00 acres out of N.E. corner, said 3 acres being South of said S.H. 232 and said 3 acres being described in Deed Vol. Page , leaving in this tract 112.45 acres more or less.

INDEXED ON MAP  
1124

-5D

18