

March 10, 1956

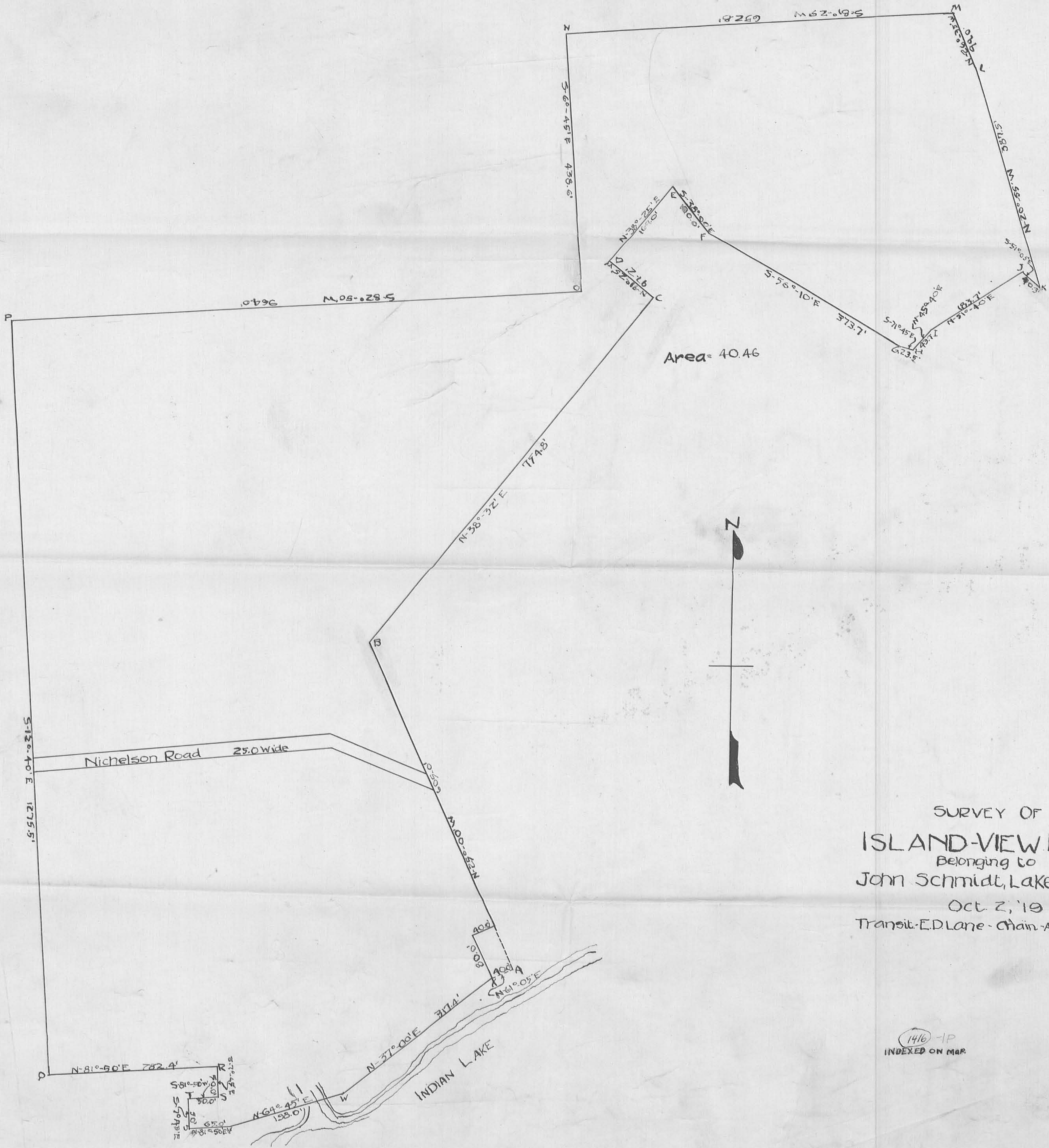
DESCRIPTION FOR GEORGE VINCENT ZANE

The following described real estate situated in the County of Logan, State of Ohio, Stokes Township, O.V.M.S. No. 12276, and being more particularly described as follows:

Beginning in the east side of County Highway No. 260 (also known as Ash Avenue, Island View) at a point 146.67 feet north of Cottonwood Avenue in Wise's Island View Allotment; said beginning point also being at the northwest corner of Carl Stuber's 3.00 acre tract; thence East with the north line of Stuber's 3.00 acre tract 100.00 feet to a stake; thence North parallel with the east side of C. H. No. 260 (Ash Avenue) 42.00 feet; thence West parallel with the north side of Stuber's 3.00 acre tract 100.00 feet to the east side of C. H. No. 260 (Ash Avenue); thence South with the east line of said C. H. No. 260 (Ash Avenue) 42.00 feet to the place of beginning containing 0.10 acres, more or less, and being out of the south side of an 0.18 acre tract deeded to George Vincent Zane by deed dated January 28, 1956.

INDEXED ON MAP
1416

- 1 D



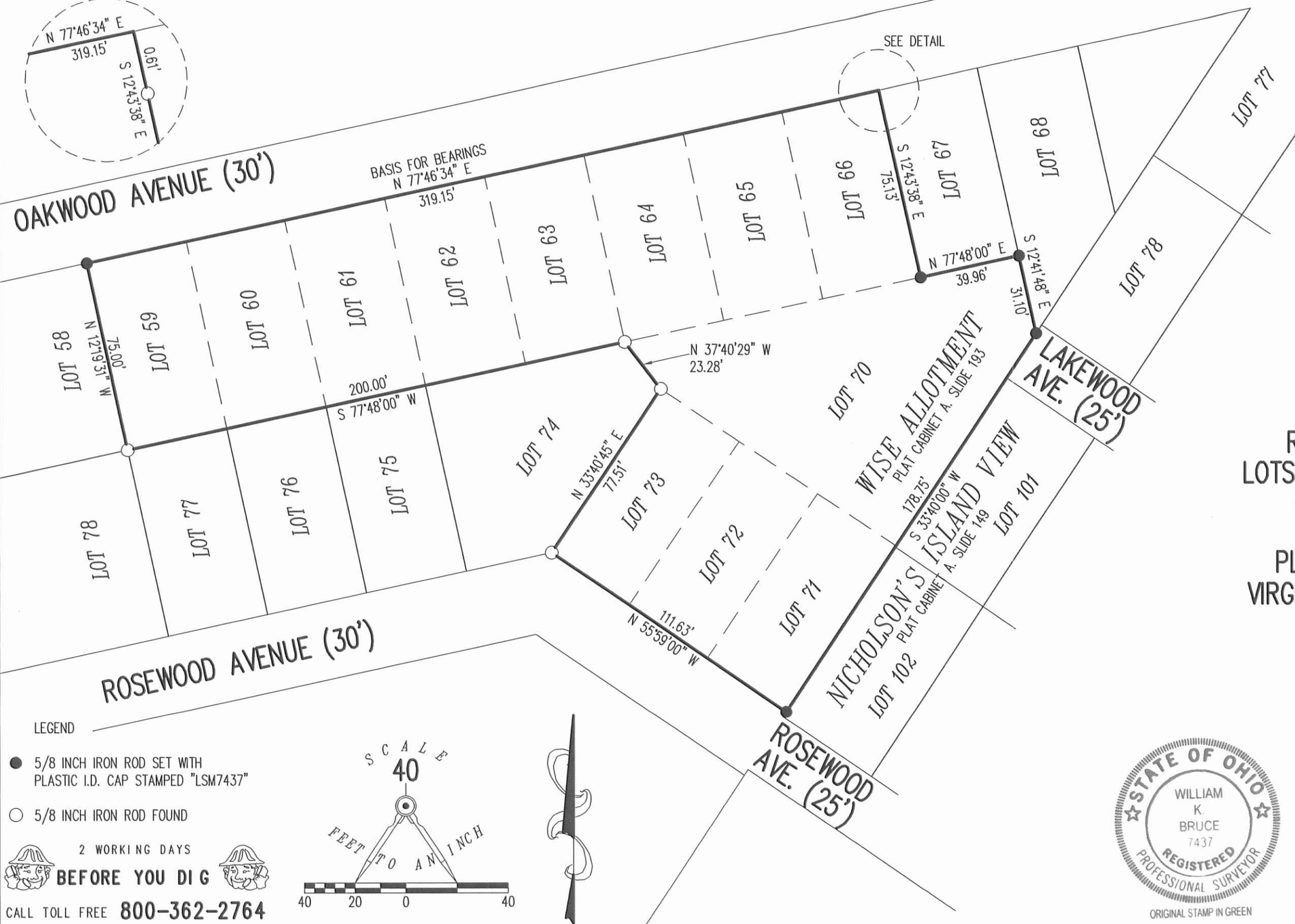
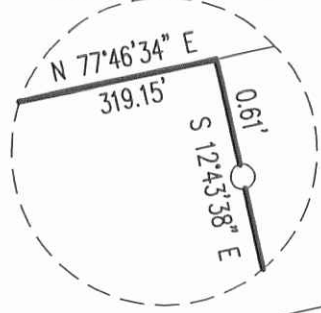
SURVEY OF
 ISLAND-VIEW PARK.
 Belonging to
 John Schmidt, Lake-View, O
 Oct. 2, '19
 Transit - E.D. Lane - Chain - A.R. Steese.

(1416) - 1P
 INDEXED ON MAP

APPROVED

12-4-13

DETAIL NOT TO SCALE

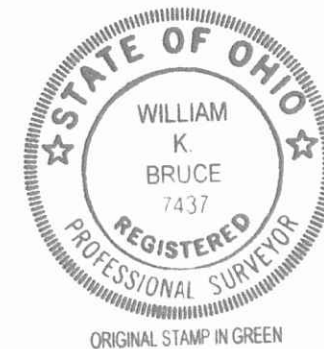


RETRACEMENT SURVEY OF
LOTS 59, 60, 61, 62, 63, 64, 65,
66, 70, 71, 72, AND 73
WISE ALLOTMENT
PLAT CABINET A, SLIDE 193
VIRGINIA MILITARY SURVEY 12276
STOKES TOWNSHIP
LOGAN COUNTY, OHIO

SURVEYED BY:

William K. Bruce

WILLIAM K. BRUCE
PROFESSIONAL SURVEYOR 7437
DECEMBER 3, 2013



COPYRIGHT 2013 BY:
LEE SURVEYING & MAPPING CO., INC.
117 North Madriver Street
BELLEFONTAINE, OHIO 43311
(937) 593-7335
WWW.LSMINC.US
surveys@lsminc.us

ADW D1013 56301013 L-5630-3

LEGEND

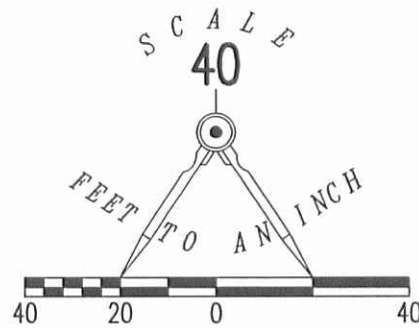
● 5/8 INCH IRON ROD SET WITH
PLASTIC I.D. CAP STAMPED "LSM7437"

○ 5/8 INCH IRON ROD FOUND

2 WORKING DAYS
BEFORE YOU DIG

CALL TOLL FREE **800-362-2764**

OHIO UTILITIES PROTECTION SERVICE.



INDEXED ON MAP
1416 2P

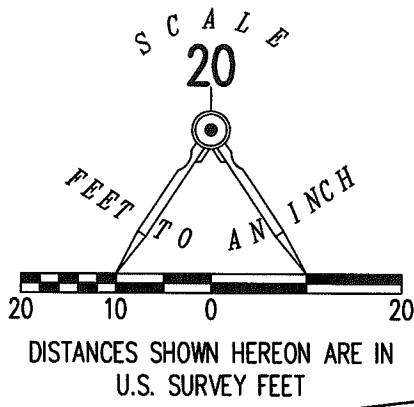
1-29-19
INDEXED

LEGEND:

- ⊙ 1 INCH IRON BAR FOUND
- 5/8 INCH IRON ROD FOUND
- 5/8 INCH BY 30 INCH IRON ROD SET WITH PLASTIC I.D. CAP STAMPED "P.S. 8533"

R/W = RIGHT-OF-WAY

C/L = CENTER-LINE



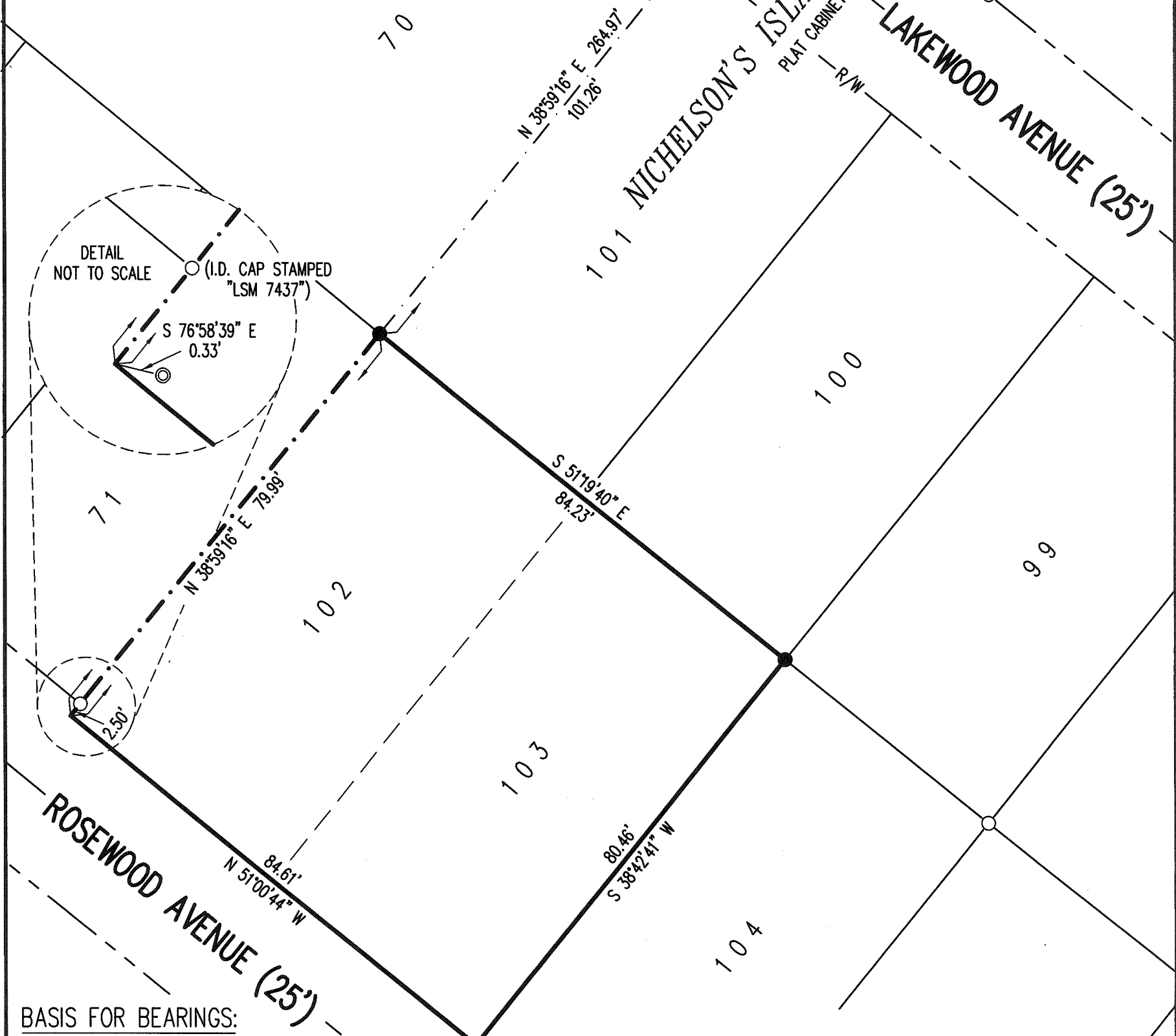
DEED & SURVEY REFERENCES:

NICHELSON'S ISLAND VIEW ALLOTMENT
PLAT CABINET A, SLIDE 149

WISE ALLOTMENT
PLAT CABINET A, SLIDE 193

LOGAN COUNTY ENGINEER'S MAP
ROOM FILES 1416 & 2000

**RETRACEMENT SURVEY OF
LOTS 102 AND 103
NICHELSON'S ISLAND VIEW ALLOTMENT
PLAT CABINET A, SLIDE 149
VIRGINIA MILITARY SURVEY 12276
STOKES TOWNSHIP
LOGAN COUNTY, OHIO**



BASIS FOR BEARINGS:

BEARINGS AND DISTANCES, SHOWN HEREON, ARE DERIVED FROM GPS OBSERVATIONS BASED ON GRID NORTH, OHIO STATE PLANE COORDINATE SYSTEM, NORTH ZONE, NAD83 (2011, EPOCH 2010), WITH THE NORTH RIGHT-OF-WAY LINE OF ROSEWOOD AVENUE HAVING A BEARING OF N 51°00'44" W.

THIS SURVEY WAS PREPARED IN THE ABSENCE OF A COMPLETE AND ACCURATE TITLE SEARCH AND DOES NOT GUARANTEE TITLE.

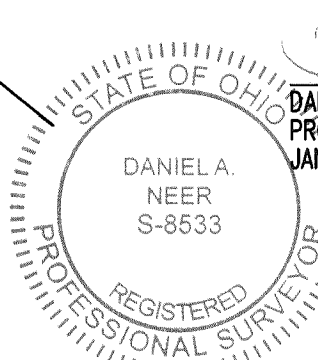
2 WORKING DAYS



CALL TOLL FREE **800-362-2764**

OHIO UTILITIES PROTECTION SERVICE

SURVEYED BY:



DANIEL A. NEER
PROFESSIONAL SURVEYOR NO. 8533
JANUARY 25, 2019

COPYRIGHT 2019 BY:

LEE SURVEYING & MAPPING CO.
117 North Madriver Street
BELLEFONTAINE, OHIO 43311
(937) 593-7335

WWW.LEE-SURVEYING.COM
surveys@lee-surveying.com

KSS D0119 64820119 L-6482-3

INDEXED ON MAP
1416