

Winters 11/6/48

on 2/9 837-083

40 5/6 837-134

Vol. 1. New York, Pa.

INDEXED ON MAP

(143) - 1D-1

Sta.	Alignment	Deflection	Remarks.
+76			Edge of water E side.
847			R $\frac{50}{333.5}$ L $\frac{49}{123}$
+106.5			R $\frac{50}{173}$ L $\frac{49}{47}$
846			
845			
+614			L $\frac{50}{104}$ L $\frac{49}{207}$
844			
+29			
843			
+72.8		28° 12' R	Contour L $\frac{49}{139}$
842			
841			
+188			L $\frac{50}{99}$ L $\frac{49}{234}$
840			
+76.7			L $\frac{50}{215}$ L $\frac{49}{210}$
839			
838			
+120.5		26° 12' R	L $\frac{49}{309}$
837			
+60			L $\frac{50}{194}$ L $\frac{49}{206}$
836			
+154.4			L $\frac{50}{243}$ L $\frac{49}{337}$
835			
834			
+65			L $\frac{50}{53}$ L $\frac{49}{225}$
833			
+18			
+1088			
832		45° 5' L	Contour

Topography

line between Braty Heir & Waltpees

(1437) - 10-2
INDEXED ON MAP

line between Denny & Booty.

Sta.	Alignment	Deflection	Remarks
867			
866			
865			
o.c. +109.9		4° 13' L	L $\frac{49}{217}$
864			
863			
862			
861			
860			
859			R $\frac{50}{33.7}$ L $\frac{49}{240}$
858			
+10.7			L $\frac{50}{26.7}$ L $\frac{49}{195}$
857			
856			
855			Counter of Ditch
+56.6			L $\frac{50}{63}$ L $\frac{49}{210}$
+41.7			
854			
853			
o.c. +26.7		64° 9 1/2' L	
852			
851			R $\frac{50}{101}$ L $\frac{49}{127}$
+100			Edge of water.
850			
+63			
849			R $\frac{49}{41}$
+17			
848			

5481.05' W
 1183.2'

Topography.

1437-10-3

INDEXED ON MAP

Sta	Alignment	Deflection	Remarks
880			
+50.9			$L \frac{50}{250} \quad L \frac{49}{345}$
878			
+04.5			$L \frac{50}{21} \quad L \frac{49}{322}$
877			
o.c. +35.1	74° 44' L		
876			
+25.9			$R \frac{50}{116} \quad L \frac{49}{91}$
875			
874			Edge of water N.W. side.
+72			$R \frac{50}{368.0} \quad L \frac{49}{80}$
+52.5			$R \frac{50}{117} \quad L \frac{49}{8}$
+76.0			$R \frac{49}{32}$
+51			Edge of water S.E. side
873			
872			
+35			$R \frac{50}{12.4} \quad L \frac{49}{76}$
871			
+86.7			$L \frac{49}{76}$
870			
869			
o.c. +16.7	101° 44' R		$L \frac{49}{90}$
868			
+21.3			$L \frac{50}{186} \quad L \frac{49}{362}$
867			

(Note) Contour line running as noted.

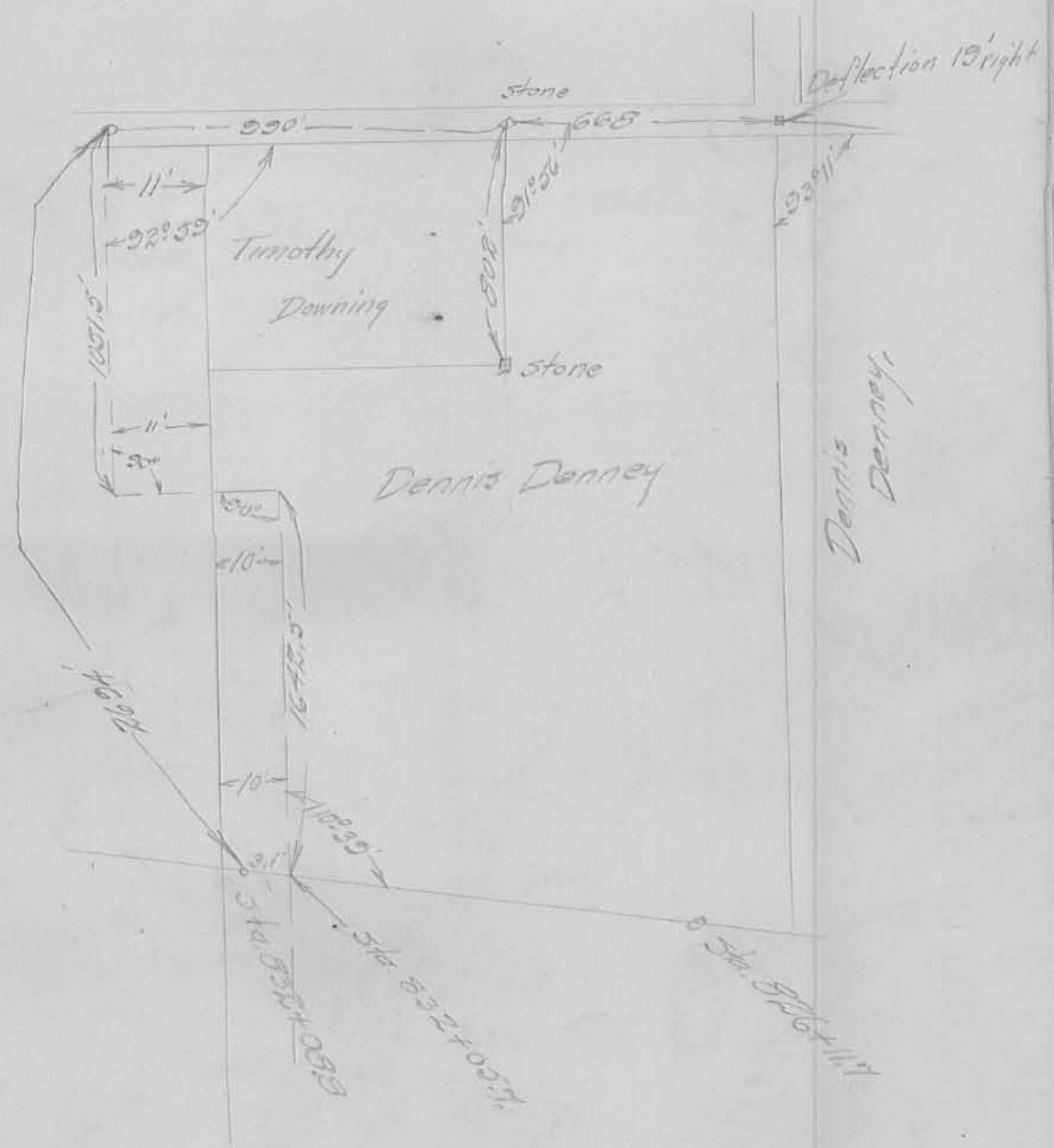
N 300.00' W
882.4'

S 43° 26' W
402.8'

1937-15-4
INDEXED ON MAP

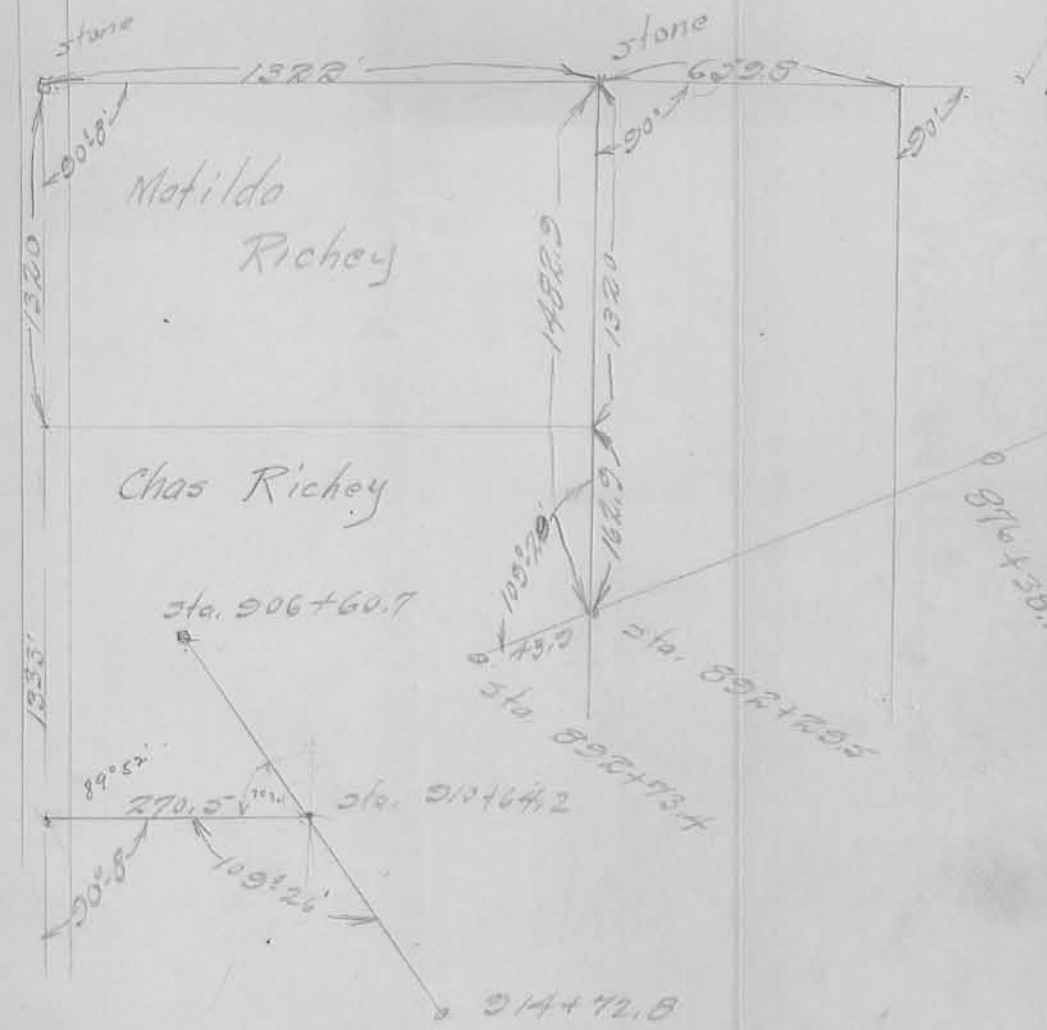
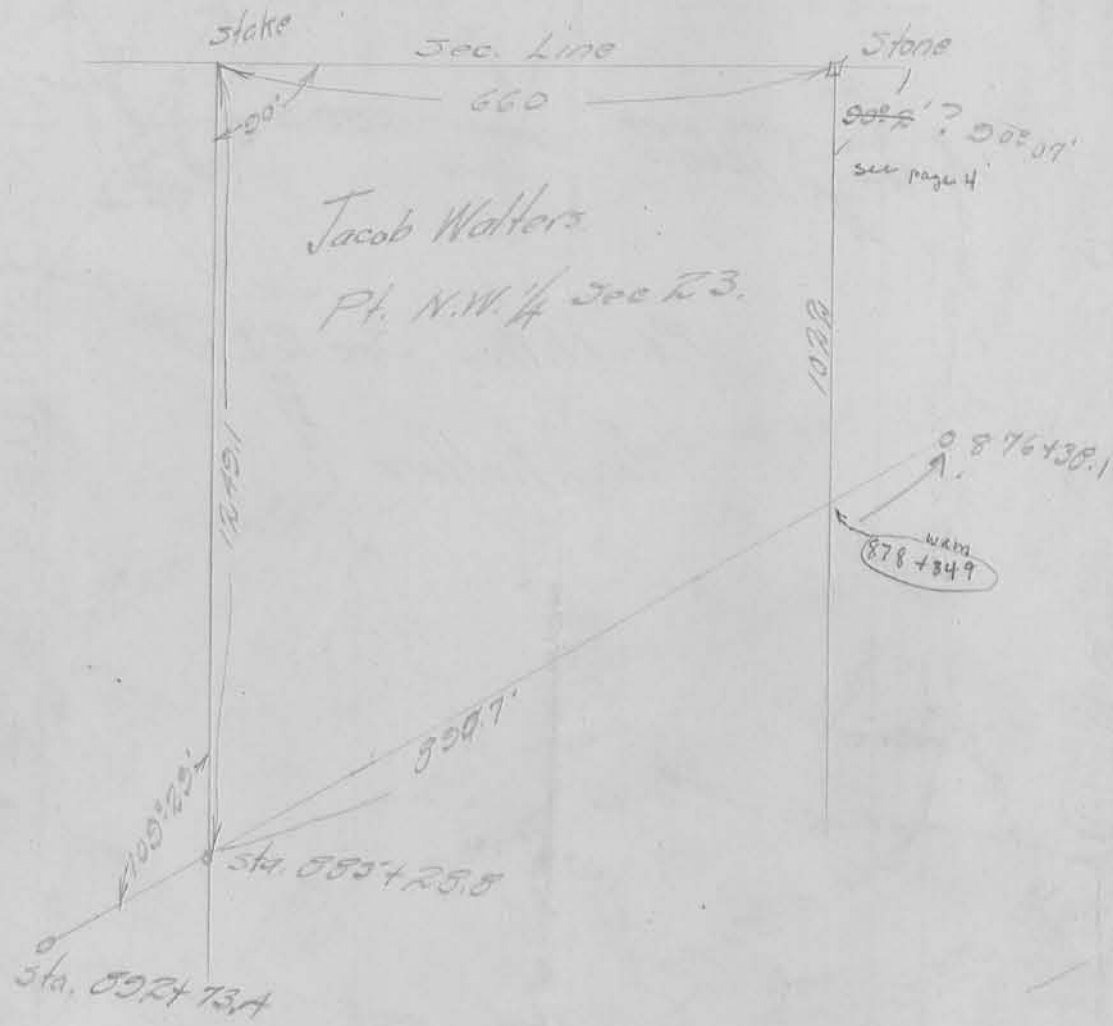
Sta.	Alignment	Deflection	Remarks
120.3	585.947W 1387.3		R $\frac{20}{299}$ L $\frac{49}{206}$
896			
895			
+60.5			
894			R $\frac{30}{166.5}$ L $\frac{49}{225}$
893			
+73.4		142° 29' 14" L	L $\frac{49}{226}$
892			
891			
890			point of $\frac{49}{20}$ water
+10.1			R $\frac{50}{136}$ L $\frac{49}{39}$
889			
888			
887			
+9.4			R $\frac{50}{8.5}$
886			
+82.8			L $\frac{49}{42}$
885	5702.6' W 16307.3'		
+10.2			L $\frac{49}{125}$
884			
+22.4			L $\frac{49}{162}$
883			
+47.1			R $\frac{50}{20.8}$
882			
881			
+50			L $\frac{50}{58.7}$ L $\frac{49}{235.5}$
880			

1937-1D-5
INDEXED ON MAP



1437 - 1D-6

INDEXED ON MAP



$$\begin{array}{r} 180 \\ 109.26 \\ \hline 70.74 \\ 8008 \\ 7092 \\ \hline 1916 \end{array}$$

$$\begin{array}{r} 914+72.8 \\ 910+64.2 \\ \hline 4.086 \end{array}$$

1432 - 1D-8
INDEXED ON MAP