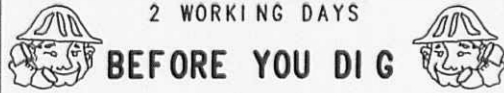


2-10-15

APPROVED



2 WORKING DAYS

BEFORE YOU DIG

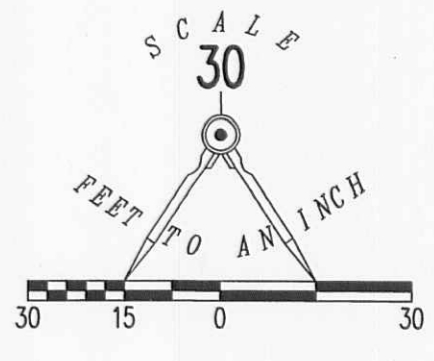
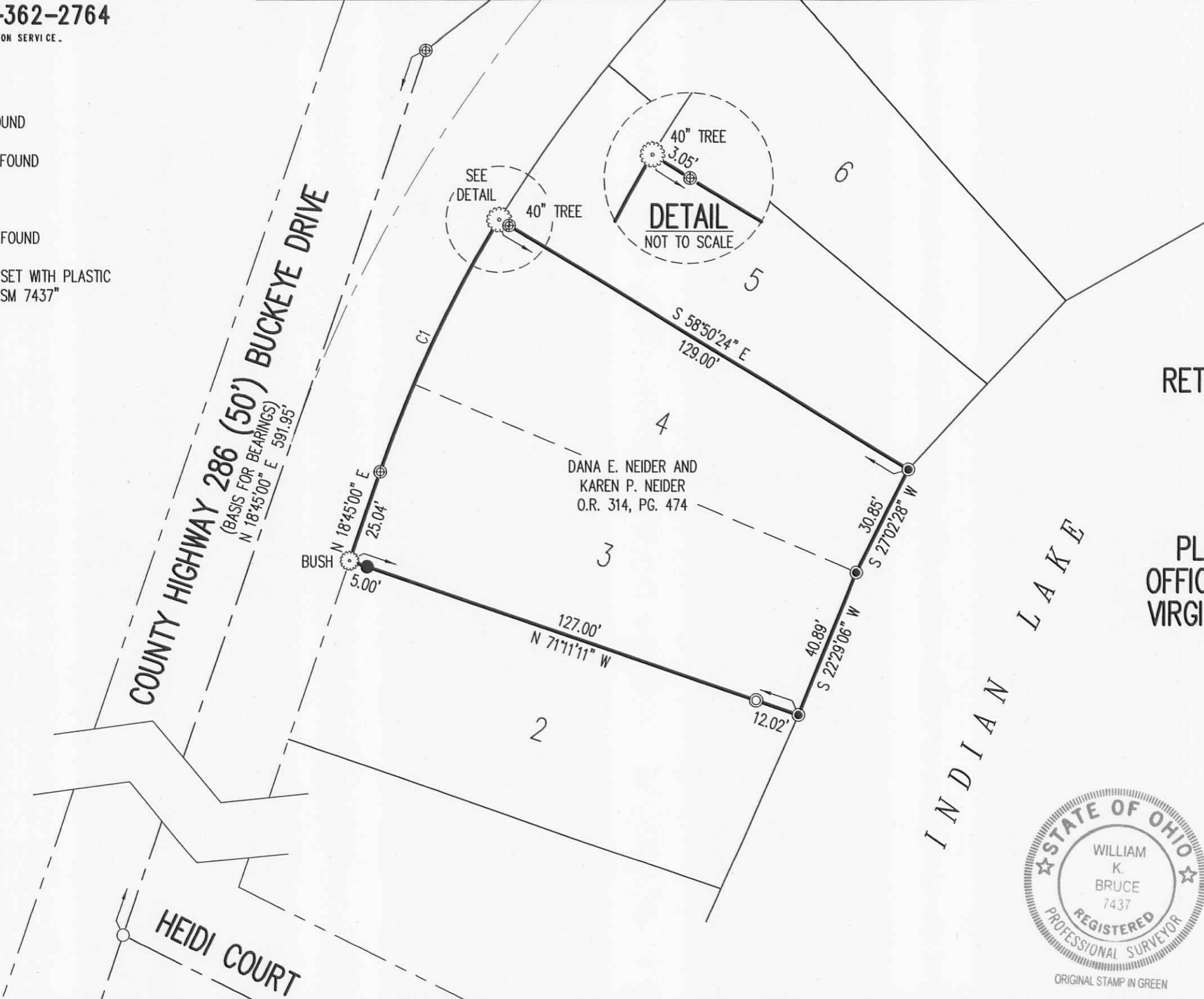
CALL TOLL FREE **800-362-2764**

OHIO UTILITIES PROTECTION SERVICE.

LEGEND:

- ⊕ 1 INCH IRON PIPE FOUND
- ⊙ 1/2 INCH IRON ROD FOUND
- MAG NAIL SET
- 5/8 INCH IRON ROD FOUND
- 5/8 INCH IRON ROD SET WITH PLASTIC I.D. CAP STAMPED "LSM 7437"

CURVE	DELTA ANGLE	RADIUS	ARC LENGTH	CHORD BEARING	CHORD LENGTH
C1	12°24'42"	343.73'	74.46'	N 25°01'30" E	74.31'



RETRACEMENT SURVEY OF THE
 DANA E. NEIDER AND
 KAREN P. NEIDER
 LOTS 3 AND 4
 WAGNER ALLOTMENT
 PLAT CABINET A, SLIDE 273
 OFFICIAL RECORD 314, PAGE 474
 VIRGINIA MILITARY SURVEY 12276
 STOKES TOWNSHIP
 LOGAN COUNTY, OHIO

SURVEYED BY:

William K. Bruce

WILLIAM K. BRUCE
 PROFESSIONAL SURVEYOR 7437
 FEBRUARY 5, 2015



ORIGINAL STAMP IN GREEN

COPYRIGHT 2015 BY:
LEE SURVEYING & MAPPING CO., INC.
 117 North Madriver Street
 BELLEFONTAINE, OHIO 43311
 (937) 593-7335
 WWW.LSMINC.US
 surveys@lsminc.us

KSS D0115 58690115 L-5869-3

INDEXED ON MAP
 2357 1P

4-20-16

Lee Surveying and Mapping Co., Inc.



Land Surveys • Topography • Subdivisions • Construction Layout

117 N. Madriver St.
Bellefontaine OH 43311



Phone: (937) 593-7335
Fax: (937) 593-7444
surveys@lsminc.us

STATE OF OHIO INDIAN LAKE RESERVOIR LANDS 0.006 ACRE

Lying in Virginia Military Survey 12276, Stokes Township, Logan County, Ohio.

Being out of the State of Ohio Indian Lake Reservoir Lands and being more particularly described as follows:

Commencing on a 40 inch tree on the northwest corner of Lot 4 of Wagner Allotment (Plat Cabinet A, Slide 273).

THENCE, with the north line of Lot 4, S 58°-50'-24"E, a distance of 129.00 feet to a MAG nail found on the northeast corner of Lot 4 at the TRUE POINT OF BEGINNING, passing a 1 inch iron pipe found at 3.05 feet.

THENCE, with the north line of Lot 4 extended, S 58°-50'-24"E, a distance of 3.69 feet to a point on the face of a concrete seawall.

THENCE, with the face of the concrete seawall, the following two courses:

S 25°-29'-58"W, a distance of 39.27 feet to a point.

S 25°-28'-19"W, a distance of 31.76 feet to a point.

THENCE, with the south line of Lot 3 of Wagner Addition extended, N 71°-11'-11"W, a distance of 2.38 feet to a MAG nail found on the southeast corner of Lot 3.

THENCE, with the east line of Lot 3, N 22°-29'-06"E, a distance of 40.89 feet to a MAG nail found on the northeast corner of Lot 3 and the southeast corner of Lot 4.

THENCE, with the east line of Lot 4, N 27°-02'-28"E, a distance of 30.85 feet to the point of beginning.

Containing 0.006 acre, being 264.91 square feet.

Property is subject to any and all previous easements and rights-of-way of record.

The basis for bearings is the center-line of County Highway 286 (Buckeye Drive), being N 18°-45'-00"E, and all other bearings are from angles and distances measured in a field survey by Lee Surveying and Mapping Co., Inc. on June 9, 2016.

Description prepared by:

William K. Bruce
Professional Surveyor 7437
June 15, 2016



ORIGINAL STAMP IN GREEN

58690516

INDEXED ON MAP

2357 2D

MEMBER: NATIONAL SOCIETY OF PROFESSIONAL SURVEYORS (NSPS)
PROFESSIONAL LAND SURVEYORS OF OHIO (PLSO)

6-20-14

APPROVED

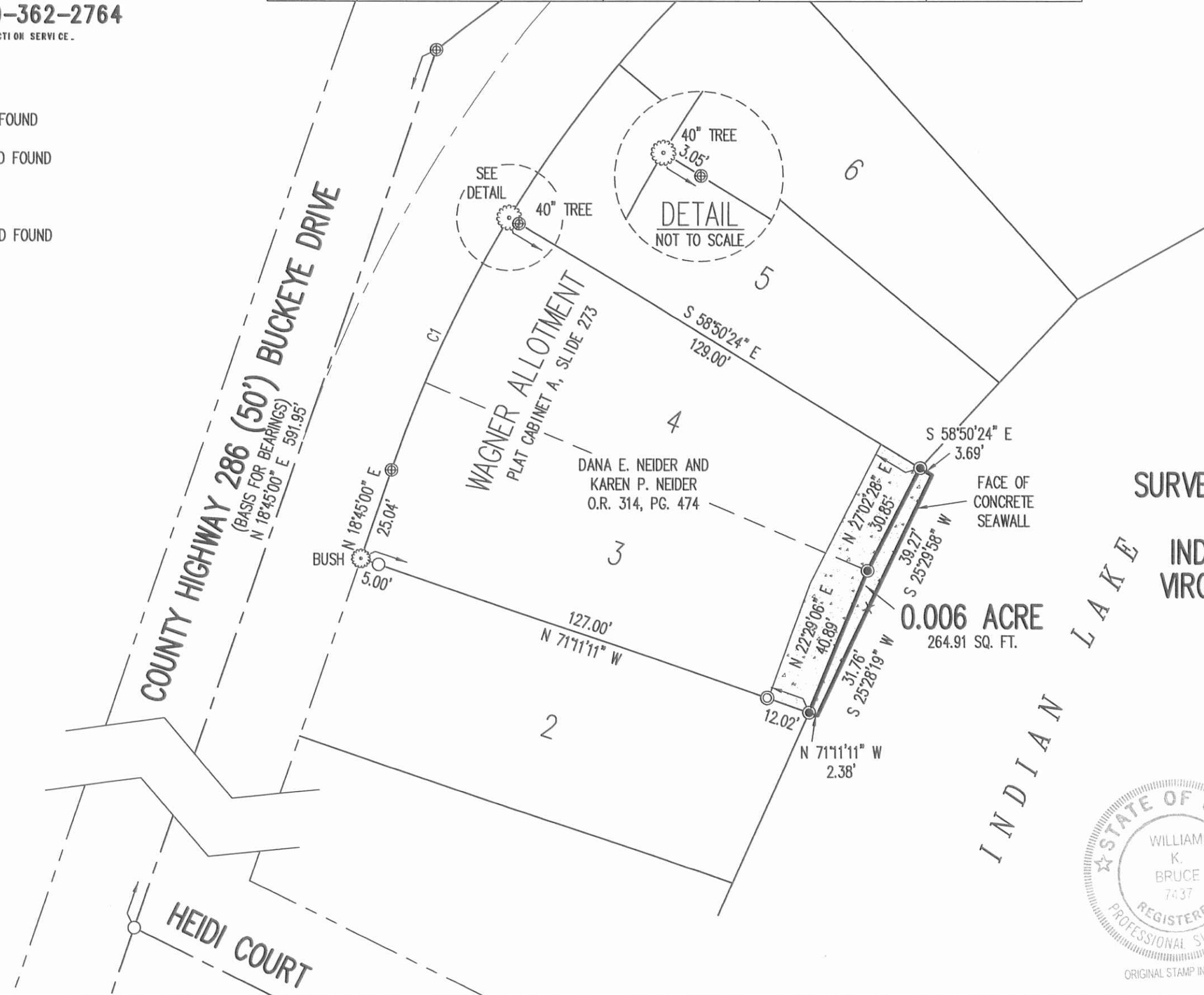
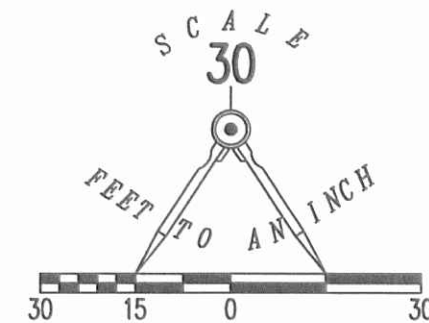
2 WORKING DAYS BEFORE YOU DIG

CALL TOLL FREE **800-362-2764**
OHIO UTILITIES PROTECTION SERVICE.

LEGEND:

- ⊕ 1 INCH IRON PIPE FOUND
- ⊙ 1/2 INCH IRON ROD FOUND
- MAG NAIL FOUND
- 5/8 INCH IRON ROD FOUND

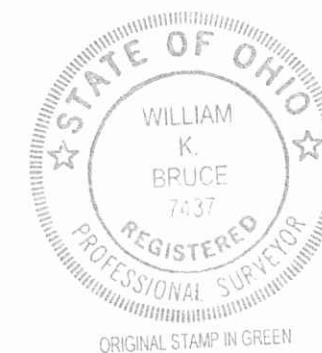
CURVE	DELTA ANGLE	RADIUS	ARC LENGTH	CHORD BEARING	CHORD LENGTH
C1	12°24'42"	343.73'	74.46'	N 25°01'30" E	74.31'



**SURVEY OF 0.006 ACRE OUT OF THE
STATE OF OHIO
INDIAN LAKE RESERVOIR LANDS
VIRGINIA MILITARY SURVEY 12276
STOKES TOWNSHIP
LOGAN COUNTY, OHIO**

SURVEYED BY:

William K. Bruce
WILLIAM K. BRUCE
PROFESSIONAL SURVEYOR 7437
JUNE 9, 2016



COPYRIGHT 2016 BY:
LEE SURVEYING & MAPPING CO., INC.
117 North Madriver Street
BELLEFONTAINE, OHIO 43311
(937) 593-7335
WWW.LSMINC.US
surveys@lsminc.us

KSS D0516 58690516 L-5869-3

INDEXED ON MAP
2357 2P

Lee Surveying and Mapping Co., Inc.



APPROVED

Land Surveys • Topography • Subdivisions • Construction Layout

117 N. Madriver St.
Bellefontaine OH 43311



Phone: (937) 593-7335
Fax: (937) 593-7444
surveys@lsminc.us

STATE OF OHIO INDIAN LAKE RESERVOIR LANDS 0.006 ACRE

Lying in Virginia Military Survey 12276, Stokes Township, Logan County, Ohio.

Being out of the State of Ohio Indian Lake Reservoir Lands and being more particularly described as follows:

Beginning on a MAG nail set on the southeast corner of Lot 5 of Wagner Allotment (Plat Cabinet A, Slide 273).

THENCE, with the southeasterly line of Lot 5, N 42°-39'-19"E, a distance of 31.42 feet to a MAG nail set on the northeast corner of Lot 5 and the southeast corner of Lot 6.

THENCE, with the southeasterly line of Lot 6, N 43°-45'-43"E, a distance of 30.87 feet to a MAG nail set on the most easterly corner of Lot 6 and the southwest corner of Lot 7.

THENCE, with the northeasterly line of Lot 6 extended, S 42°-02'-15"E, a distance of 5.84 feet to a point on the face of a concrete seawall.

THENCE, with the face of the concrete seawall, S 56°-19'-04"W, a distance of 1.78 feet to a corner of the face of the seawall.

THENCE, with the edge of the rip-rap at the shoreline of Indian Lake, S 53°-19'-06"W, a distance of 4.16 feet to a point at the corner of a covered boat well.

THENCE, with the edge of the covered boat well, S 43°-44'-46"W, a distance of 19.10 feet to a point on the face of a concrete seawall.

THENCE, with the edge of the concrete seawall, the following two courses:

S 44°-38'-05"W, a distance of 35.87 feet to a point.

S 25°-35'-45"W, a distance of 0.24 feet to a point.



Lee Surveying and Mapping Co., Inc.

Land Surveys • Topography • Subdivisions • Construction Layout

117 N. Madriver St.
Bellefontaine OH 43311



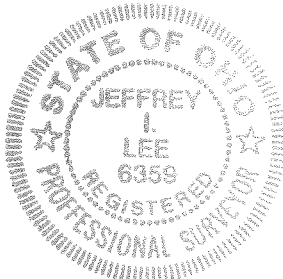
Phone: (937) 593-7335
Fax: (937) 593-7444
surveys@lsminc.us

THENCE, with the southwesterly line of Lot 5 extended and the northwesterly line of the Dana Neider 0.006 acre tract (O.R. 1261, Pg. 639), N 58°-50'-24"W, a distance of 3.76 feet to the point of beginning.

Containing 0.006 acre.

Property is subject to any and all previous easements and rights-of-way of record.

The basis for bearings is the center-line of County Highway 286, being N 18°-45'-00"E, and all other bearings are from angles and distances measured in a field survey by Lee Surveying and Mapping Co., Inc. on September 25, 2017.



Description prepared by:

A handwritten signature in black ink, appearing to read 'Jeffrey I. Lee', written over a circular scribble.

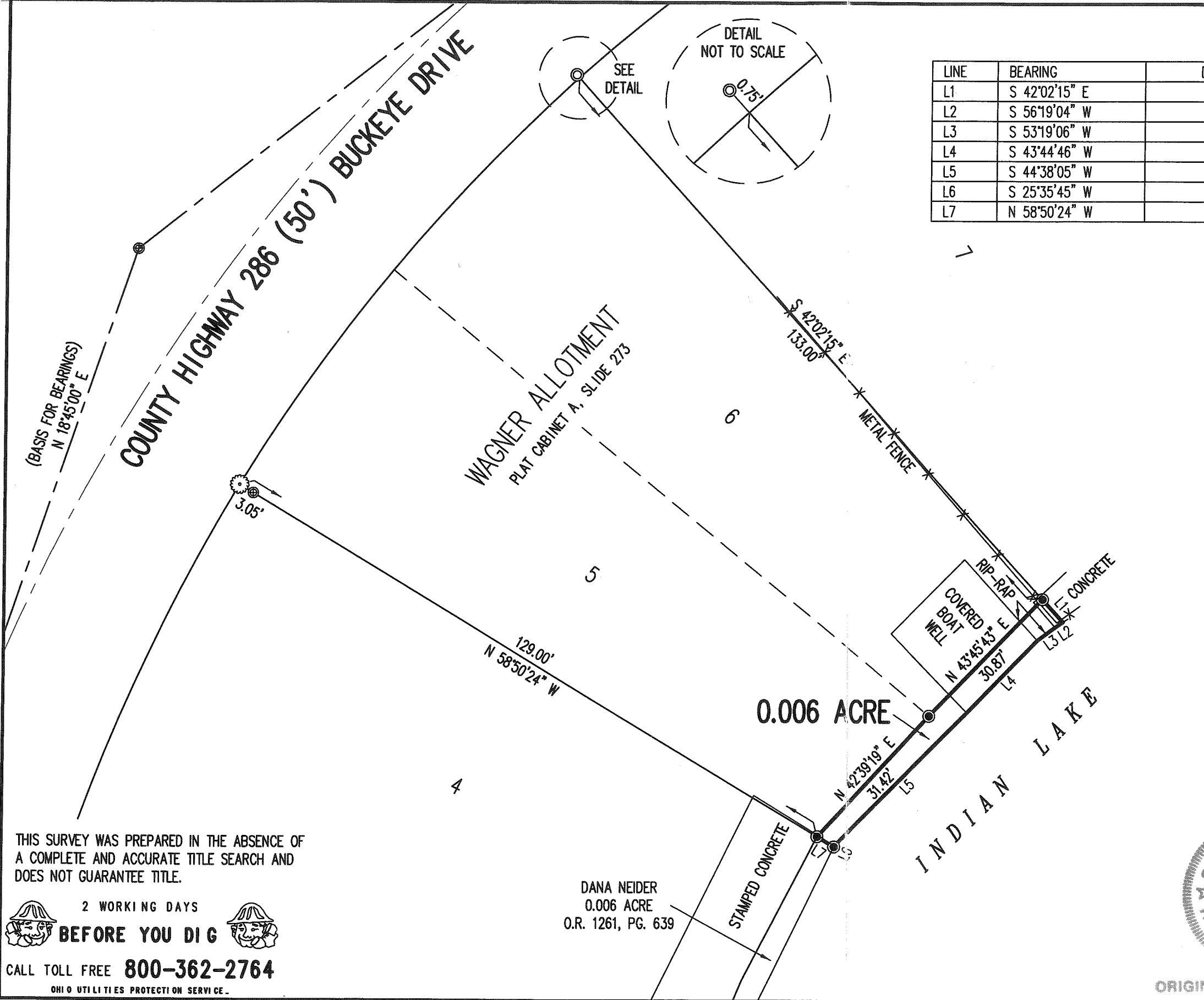
Jeffrey I. Lee
Professional Surveyor 6359
September 28, 2017

ORIGINAL STAMP IN GREEN

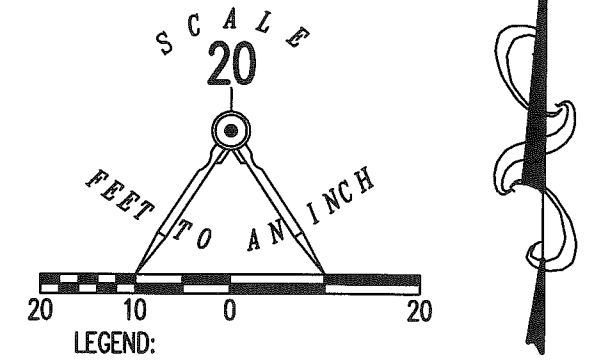
58690917



APPROVED



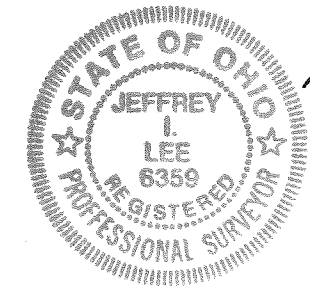
LINE	BEARING	DISTANCE
L1	S 42°02'15" E	5.84'
L2	S 56°19'04" W	1.78'
L3	S 53°19'06" W	4.16'
L4	S 43°44'46" W	19.10'
L5	S 44°38'05" W	35.87'
L6	S 25°35'45" W	0.24'
L7	N 58°50'24" W	3.76'



**SURVEY OF 0.006 ACRE OUT OF THE STATE OF OHIO
 INDIAN LAKE RESERVOIR LANDS
 VIRGINIA MILITARY SURVEY 12276
 STOKES TOWNSHIP
 LOGAN COUNTY, OHIO**

SURVEYED BY:

JEFFREY I. LEE
 PROFESSIONAL SURVEYOR 6359
 SEPTEMBER 25, 2017



COPYRIGHT 2017 BY:
LEE SURVEYING & MAPPING CO., INC.
 117 North Madriver Street
 BELLEFONTAINE, OHIO 43311
 (937) 593-7335
 WWW.LSMINC.US
 surveys@lsminc.us
 ORIGINAL STAMP IN GREEN

THIS SURVEY WAS PREPARED IN THE ABSENCE OF A COMPLETE AND ACCURATE TITLE SEARCH AND DOES NOT GUARANTEE TITLE.

2 WORKING DAYS
BEFORE YOU DIG
 CALL TOLL FREE **800-362-2764**
 OHIO UTILITIES PROTECTION SERVICE.

DANA NEIDER
 0.006 ACRE
 O.R. 1261, PG. 639

INDEXED ON MAP
 2357

LEGAL DESCRIPTION

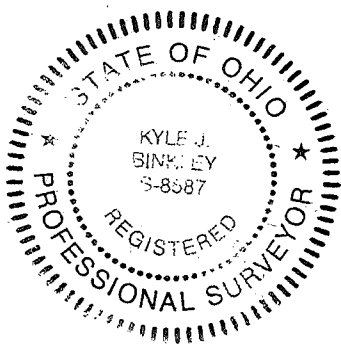
Being a part of the State of Ohio Indian Lake Reservoir Lands and being located in Virginia Military Survey 12276, Stokes Township, Logan County, Ohio, more particularly described as follows:

Beginning at a point at the SE corner of Lot #7 of Wagner Allotment (P.C. A, Slide 273) in the name of Anna & Phillip Hicks (O.R. 1392, Pg. 5104) and being the SW corner of Lot #8 and the SW corner of a 0.431 acre tract in the name of Dennis E. Lange (O.R. 1267, Pg. 449), as referenced by an existing #5 Rebar at N 37°-12'-43" W, 9.77'; thence the following courses:

1. N 61°-54'-38" E with the S line of said 0.431 acre tract and the S line of said Lot #8, 54.49' to a point at the SE corner of said Lot #8 and the SW corner of Lot #9 of said Wagner Allotment;
2. N 87°-13'-57" E with the S line of said 0.431 acre tract and being the S line of Lot #9, 13.94' to a point at the SE corner of said 0.431 acre tract and the SW corner of a 0.242 acre tract in the name of Cranberry Property Investments, LLC (O.R. 1318, Pg. 961), as referenced by a #5 Rebar set at N 09°-57'-22" E, 5.00';
3. S 09°-57'-22" W, 3.96' to a point on the face of a concrete seawall;
4. S 84°-14'-06" W with the face of a concrete seawall, 23.92' to a point on the S line of said 0.431 acre tract and being the S line of said Lot #8;
5. S 61°-54'-38" W with the S line of said 0.431 acre tract and being the S line of said Lot #8, 4.67' to a point on the face of a concrete seawall;
6. S 55°-22'-55" W with the face of a concrete seawall, 37.41' to a point;
7. N 37°-12'-43" W, 4.31' to the POINT OF BEGINNING.

The above described parcel contains 0.004 acres, more or less, subject to all legal highways and easements of record.

The system of bearings for this legal description is based on the Ohio State Plane-North Coordinate System NAD83 (2011). This legal description and accompanying plat represent an actual boundary survey completed under the direct supervision of Kyle J. Binkley, P.S. #8587 on December 15, 2020. All markers called for above are in place.

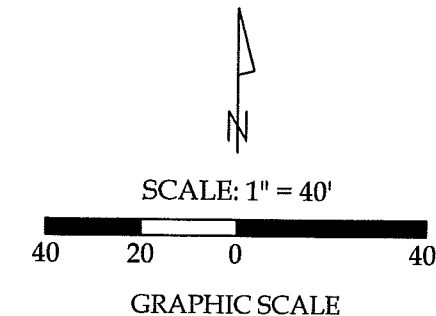
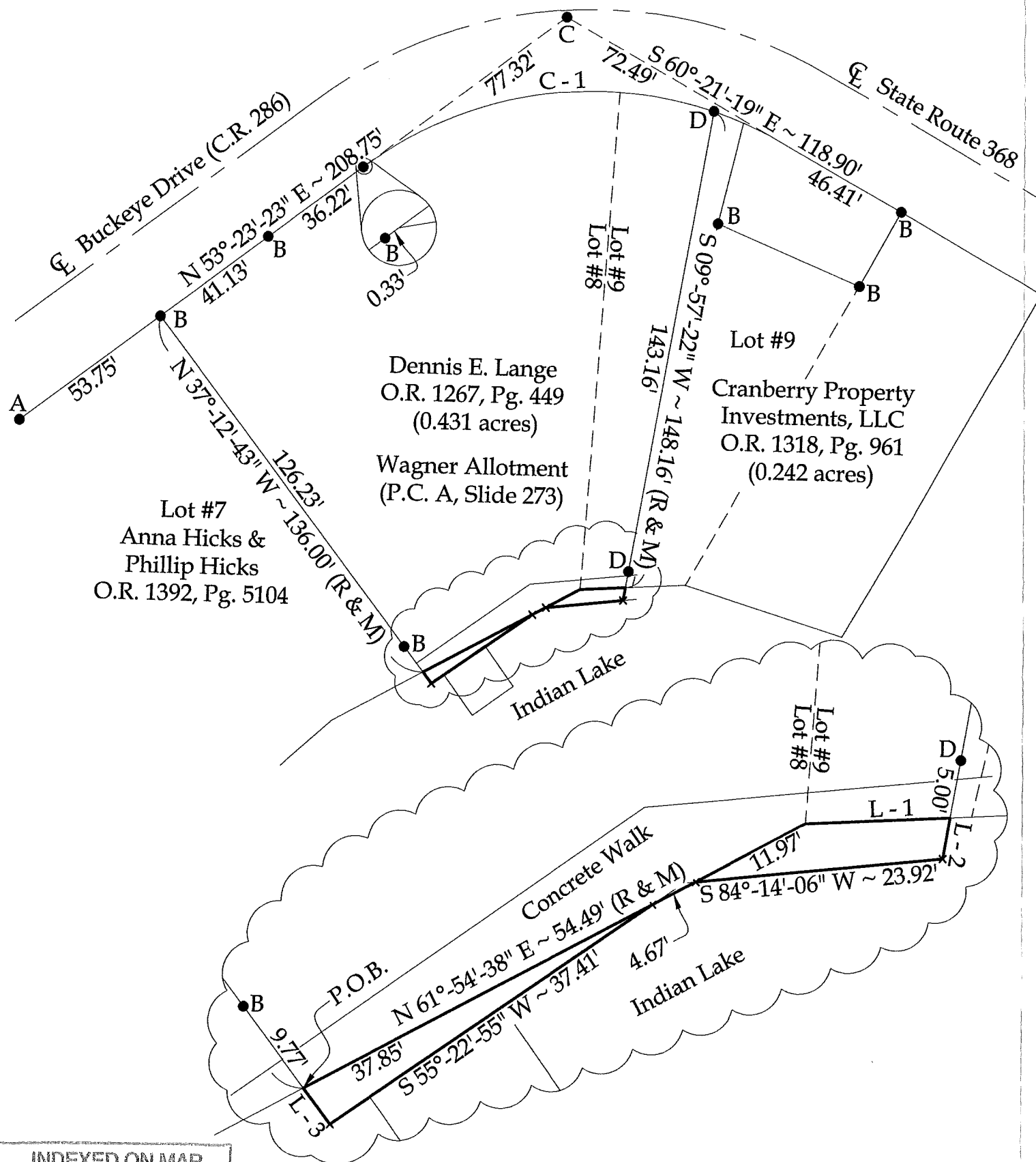


INDEXED ON MAP
2357

1-27-21

APPROVED

Survey of 0.004 acres out of the State of Ohio Indian Lake Reservoir Lands,
Virginia Military Survey 12276, Stokes Township, Logan County, Ohio.



Line Data

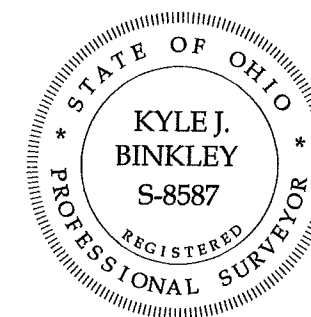
- L - 1 = N 87°-13'-57" E ~ 13.94' (R & M)
- L - 2 = S 09°-57'-22" W ~ 3.96'
- L - 3 = N 37°-12'-43" W ~ 4.31'

Legend

- A = Existing 1" Iron Pipe
- B = Existing #5 Rebar
- C = Existing PK Nail
- D = Set #5 Rebar

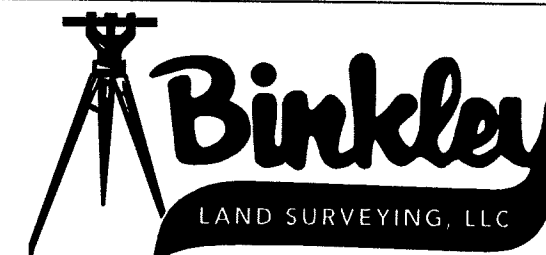
Curve Data

- (C - 1)
- Radius = 118.24'
- Delta = 54°-51'-40"
- Arc Length = 113.21'
- Chord Distance = 108.94'
- Chord Bearing = N 79°-23'-47" E



This plat and the accompanying legal description represent an actual boundary survey completed under my direct supervision on December 15, 2020.

Kyle J. Binkley, P.S. #8587



121 W. Auglaize Street
Wapakoneta, Ohio 45895
(419) 236-3768

CLIENT: Dennis Lange			
SURVEYED BY: T.J.S./T.E.W.	DATE: 12-15-2020	DRAWN BY: K.J.B.	CHECKED BY: K.J.B.
SCALE: 1" = 40'		PAGE 1	OF 2 PAGES

INDEXED ON MAP

2357

NOTE: All distances on this plat are measured unless otherwise noted.

BASIS OF BEARINGS: The system of bearings for this plat and legal description is based on the Ohio State Plane - North Coordinate System NAD 83 (2011).

10-31-17

APPROVED

Lee Surveying and Mapping Co., Inc.

Land Surveys • Topography • Subdivisions • Construction Layout

117 N. Madriver St.
Bellefontaine OH 43311



Phone: (937) 593-7335
Fax: (937) 593-7444
surveys@lsminc.us

STATE OF OHIO INDIAN LAKE RESERVOIR LANDS 0.006 ACRE

Lying in Virginia Military Survey 12276, Stokes Township, Logan County, Ohio.

Being out of the State of Ohio Indian Lake Reservoir Lands and being more particularly described as follows:

Beginning on a MAG nail set on the southeast corner of Lot 5 of Wagner Allotment (Plat Cabinet A, Slide 273).

THENCE, with the southeasterly line of Lot 5, N 42°-39'-19"E, a distance of 31.42 feet to a MAG nail set on the northeast corner of Lot 5 and the southeast corner of Lot 6.

THENCE, with the southeasterly line of Lot 6, N 43°-45'-43"E, a distance of 30.87 feet to a MAG nail set on the most easterly corner of Lot 6 and the southwest corner of Lot 7.

THENCE, with the northeasterly line of Lot 6 extended, S 42°-02'-15"E, a distance of 5.84 feet to a point on the face of a concrete seawall.

THENCE, with the face of the concrete seawall, S 56°-19'-04"W, a distance of 1.78 feet to a corner of the face of the seawall.

THENCE, with the edge of the rip-rap at the shoreline of Indian Lake, S 53°-19'-06"W, a distance of 4.16 feet to a point at the corner of a covered boat well.

THENCE, with the edge of the covered boat well, S 43°-44'-46"W, a distance of 19.10 feet to a point on the face of a concrete seawall.

THENCE, with the edge of the concrete seawall, the following two courses:

S 44°-38'-05"W, a distance of 35.87 feet to a point.

S 25°-35'-45"W, a distance of 0.24 feet to a point.

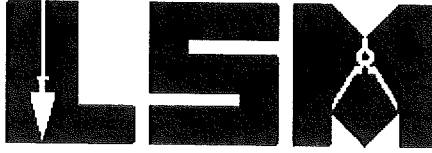
INDEXED ON MAP
2357

MEMBER: NATIONAL SOCIETY OF PROFESSIONAL SURVEYORS (NSPS)
PROFESSIONAL LAND SURVEYORS OF OHIO (PLSO)

Lee Surveying and Mapping Co., Inc.

Land Surveys • Topography • Subdivisions • Construction Layout

117 N. Madriver St.
Bellefontaine OH 43311



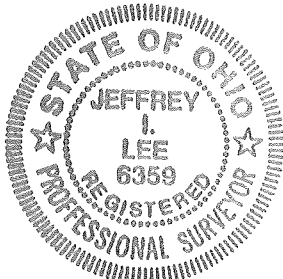
Phone: (937) 593-7335
Fax: (937) 593-7444
surveys@lsminc.us

THENCE, with the southwesterly line of Lot 5 extended and the northwesterly line of the Dana Neider 0.006 acre tract (O.R. 1261, Pg. 639), N 58°-50'-24"W, a distance of 3.76 feet to the point of beginning.

Containing 0.006 acre.

Property is subject to any and all previous easements and rights-of-way of record.

The basis for bearings is the center-line of County Highway 286, being N 18°-45'-00"E, and all other bearings are from angles and distances measured in a field survey by Lee Surveying and Mapping Co., Inc. on September 25, 2017.



ORIGINAL STAMP IN GREEN

Description prepared by:

A handwritten signature in black ink, appearing to read 'Jeffrey I. Lee', written over a circular stamp.

Jeffrey I. Lee
Professional Surveyor 6359
September 28, 2017

58690917

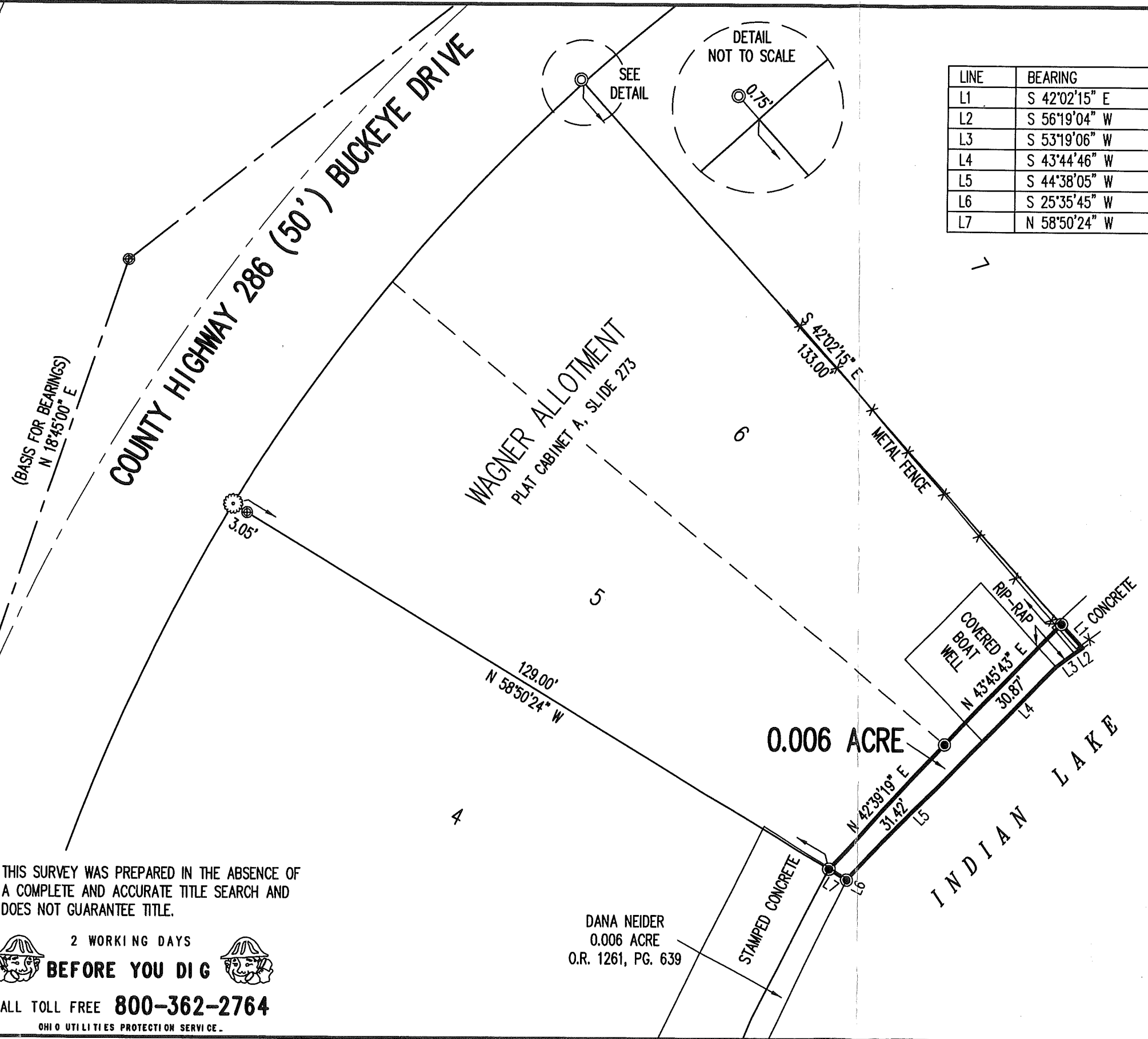
INDEXED ON MAP

2357

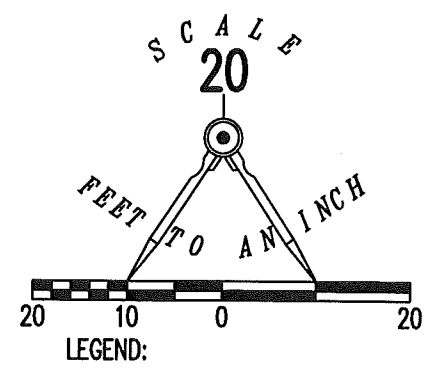
MEMBER: NATIONAL SOCIETY OF PROFESSIONAL SURVEYORS (NSPS)
PROFESSIONAL LAND SURVEYORS OF OHIO (PLSO)

APPROVED

16-31-17



LINE	BEARING	DISTANCE
L1	S 42°02'15" E	5.84'
L2	S 56°19'04" W	1.78'
L3	S 53°19'06" W	4.16'
L4	S 43°44'46" W	19.10'
L5	S 44°38'05" W	35.87'
L6	S 25°35'45" W	0.24'
L7	N 58°50'24" W	3.76'



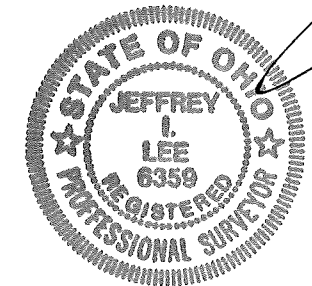
- ⊙ 1 INCH IRON PIPE FOUND
- ⊙ 1-1/2 INCH IRON PIPE FOUND
- ⊙ MAG NAIL SET

**SURVEY OF 0.006 ACRE OUT OF THE
STATE OF OHIO
INDIAN LAKE RESERVOIR LANDS
VIRGINIA MILITARY SURVEY 12276
STOKES TOWNSHIP
LOGAN COUNTY, OHIO**

SURVEYED BY:

Jeffrey I. Lee

JEFFREY I. LEE
PROFESSIONAL SURVEYOR 6359
SEPTEMBER 25, 2017



COPYRIGHT 2017 BY:
LEE SURVEYING & MAPPING CO., INC.
117 North Madriver Street
BELLEFONTAINE, OHIO 43311
(937) 593-7335
WWW.LSMINC.US
surveys@lsminc.us

THIS SURVEY WAS PREPARED IN THE ABSENCE OF
A COMPLETE AND ACCURATE TITLE SEARCH AND
DOES NOT GUARANTEE TITLE.

2 WORKING DAYS
BEFORE YOU DIG

CALL TOLL FREE **800-362-2764**
OHIO UTILITIES PROTECTION SERVICE

DANA NEIDER
0.006 ACRE
O.R. 1261, PG. 639

ORIGINAL STAMP IN GREEN KSS D0917 58690917 L-5869-3

INDEXED ON MAP
2357