

Note: Only minor changes were made in recorded distances with the exception of line A-B. The plat appears to be in error with the distance "132.20" rather than actual distance of 129.20.

○ - Irons found  
● - Irons placed

RESURVEY & STAKING  
LOTS 107-114  
SHAWNEE IS.  
LOGAN COUNTY, OHIO  
WILLIAM H. LEWIS  
REGISTERED SURVEYOR 4465

INDEXED ON MAP  
2592  
INDEXED ON MAP



Revised 3-1-01 DEJCH

# Lee Surveying and Mapping Co., Inc.

Land Surveys • Topography • Subdivisions • Construction Layout

117 N. Madriver St.  
Bellefontaine OH 43311



Phone: (937) 593-7335  
Fax: (937) 593-7444

## PUGH 0.028 ACRE

Lying in Shawnee Island, Stokes Township, Logan County, Ohio

Being out of Lot 107 of the Plat of Shawnee Island as platted in Plat Cabinet A, Slide 233 of the Logan County Records of Plats and being more particularly described as follows:

Beginning at a 1/2 inch iron pipe found at the intersection of the east right-of-way of Lake Shore Drive West (30 feet wide) and the south right-of-way of Beech Drive (30 feet wide) and on the northwest corner of Lot 107.

THENCE, with the south right-of-way of Beech Drive and the north line of said Lot 107, S 72°-58'-15" E, a distance of 125.44 feet to a 5/8 inch rod set at the TRUE POINT OF BEGINNING.

THENCE, with said south right-of-way, S 72°-58'-15" E, a distance of 50.00 feet to a 5/8 inch rod set on the northeast corner of Lot 107.

THENCE, with the north line of the Virginia Sue Williams 298 square foot part of Lot 110 (O.R. 112, Pg. 793, Tract II) and the north line of Lot 111, S 53°-55'-00" W, a distance of 55.00 feet to a 5/8 inch iron rod set, passing a 5/8 inch iron rod found at 13.40 feet.

THENCE, N 36°-03'-18" W, a distance of 10.00 feet to a 5/8 inch iron rod set.

THENCE, N 3°-42'-38" E, a distance of 39.03 feet to the point of beginning.

Containing 0.028 acre.

The basis for bearings is the south right-of-way of Beech Drive being S 72°-58'-15" E, and all other bearings are from angles and distances measured in a field survey by Lee Surveying and Mapping Co., Inc. on February 15, 2001.

Description prepared by:

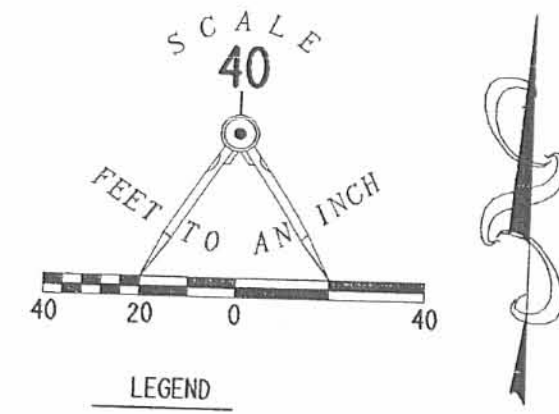
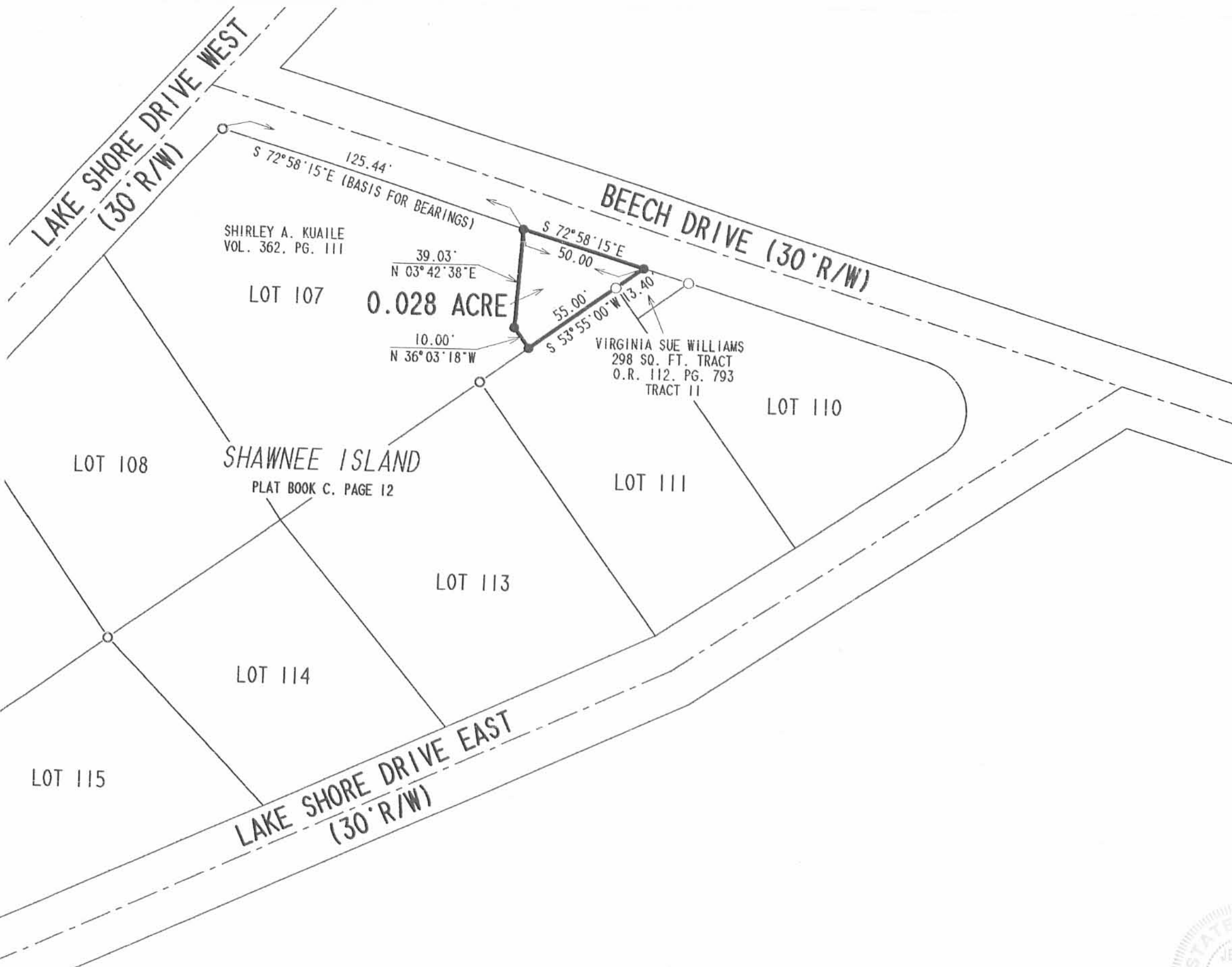
Jeffrey I. Lee  
Professional Surveyor 6359  
February 15, 2001

INDEXED ON MAP  
2592

-2D



ORIGINAL STAMP IN GREEN  
L-3102



**SURVEY OF A 0.028 ACRE TRACT  
OUT OF THE SHIRLEY A. KUAILE  
LOT 107 OF SHAWNEE ISLAND  
PLAT BOOK C PAGE 12  
STOKES TOWNSHIP  
LOGAN COUNTY, OHIO**

SURVEYED BY:  
*Jeffrey L. Lee*  
JEFFREY L. LEE  
PROFESSIONAL SURVEYOR 6359  
FEBRUARY 15, 2001



INDEXED ON MAP  
2592

ORIGINAL STAMP IN GREEN

2 WORKING DAYS  
**BEFORE YOU DIG**  
CALL TOLL FREE **800-362-2764**  
OHIO UTILITIES PROTECTION SERVICE.

COPYRIGHT 2001 BY:  
**LEE SURVEYING & MAPPING CO., INC.**  
117 North Madriver Street  
BELLEFONTAINE, OHIO 43311  
(937) 593-7335