

REC'D 8-7-06 SUM OK

Lee Surveying and Mapping Co., Inc.

Land Surveys • Topography • Subdivisions • Construction Layout

117 N. Madriver St.
Bellefontaine OH 43311



Phone: (937) 593-7335
Fax: (937) 593-7444

1975 - 2005 - 30 YEARS OF EXCELLENCE STATE OF OHIO 0.046 ACRE

Lying in Virginia Military Survey 12276, Stokes Township, Logan County, Ohio.

Being out of the State of Ohio Indian Lake Reservoir Lands.

Commencing at a 3/4 inch iron pipe found at the northwest corner of Lot 1 of Sunrise Shores Subdivision (Plat Cabinet A, Slide 601), the southwest corner of Lot 22 of Subdivision A of Seminole Island (Plat Cabinet A, Slide 233), on the easterly right-of-way of County Highway 286 (Buckeye Drive, 40 feet wide).

THENCE, with the northerly line of Lot 1 and the southerly line of Lot 22, S 66°-54'-00"E, a distance of 168.00 feet to a 5/8 inch iron rod set at the southeast corner of Lot 22, and the TRUE POINT OF BEGINNING.

THENCE, with the easterly line of Lot 22, N 8°-23'-15"W, a distance of 46.91 feet to a point at the northeast corner of Lot 22 and the southeast corner of Lot 23.

THENCE, with the easterly line of Lot 23, N 4°-08'-55"W, a distance of 44.99 feet to a 5/8 inch iron rod set at the northeast corner of Lot 23.

THENCE, with the northerly line of Lot 23 extended and the southerly line of the John W. Myers Limited Partnership, 0.16 acre tract (O.R. 623, Pg. 143) and said line extended, S 66°-54'-00"E, a distance of 33.35 feet to a MAG nail set on the face of a concrete seawall.

THENCE, with the face of a proposed seawall, S 4°-56'-02"W, a distance of 84.20 feet to a point on the face of a concrete seawall.

THENCE, with the northerly line of said Lot 1 and the southerly line of said Lot 22 extended, N 66°-54'-00"W, a distance of 14.50 feet to the point of beginning, passing a chiseled "x" set on the seawall at 0.20 feet.

Containing 0.046 acre.

The basis for bearings is the easterly right-of-way of County Highway 286, being N 23°-06'-00"E, and all other bearings are from angles and distances measured in a field survey by Lee Surveying and Mapping Co., Inc. on July 24, 2006.

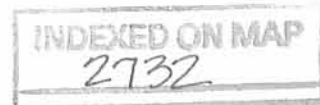
Description prepared by:



ORIGINAL STAMP IN GREEN

Jeffrey I. Lee
Jeffrey I. Lee
Professional Surveyor 6359
August 4, 2006

4279076



-1D

RECID 8-7-06 Sny BK

COUNTY HIGHWAY 286 BUCKEYE DRIVE (50')

(BASIS FOR BEARINGS)
N 23°06'00" E
80.00'

JOHN W. MYERS LIMITED PARTNERSHIP
0.16 ACRE
O.R. 623, PG. 143

LOT 23

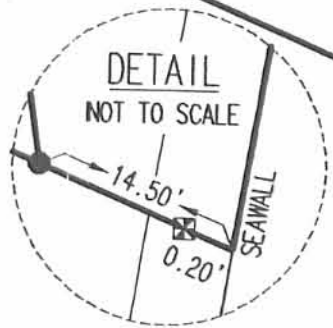
JILL SCOTT NORTON
O.R. 739, PG. 56

LOT 22

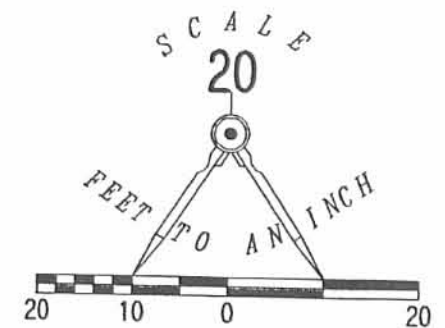
168.00'
N 66°54'00" W

LOT 1
SUNRISE SHORES SUBDIVISION
PLAT CABINET A, SLIDE 601

HEIDI COURT (60')



INDIAN LAKE
CONCRETE SEAWALL
SEAWALL



LEGEND:

- ⊙ 3/4 INCH IRON PIPE FOUND
- 5/8 INCH IRON ROD SET
- ⊠ CHISELED "X" SET
- ⊙ MAG NAIL SET

RETRACEMENT SURVEY OF THE
JILL SCOTT NORTON
LOTS 22 AND 23
SUBDIVISION A OF SEMINOLE ISLAND
PLAT CABINET A, SLIDE 233
OFFICIAL RECORD 739, PAGE 56
AND SURVEY OF THE
INDIAN LAKE RESERVOIR LANDS
VIRGINIA MILITARY SURVEY 12276
STOKES TOWNSHIP
LOGAN COUNTY, OHIO

SURVEYED BY:

Jeffrey I. Lee
JEFFREY I. LEE
PROFESSIONAL SURVEYOR 6359
JULY 24, 2006
REVISED AUGUST 4, 2006



ORIGINAL STAMP IN GREEN

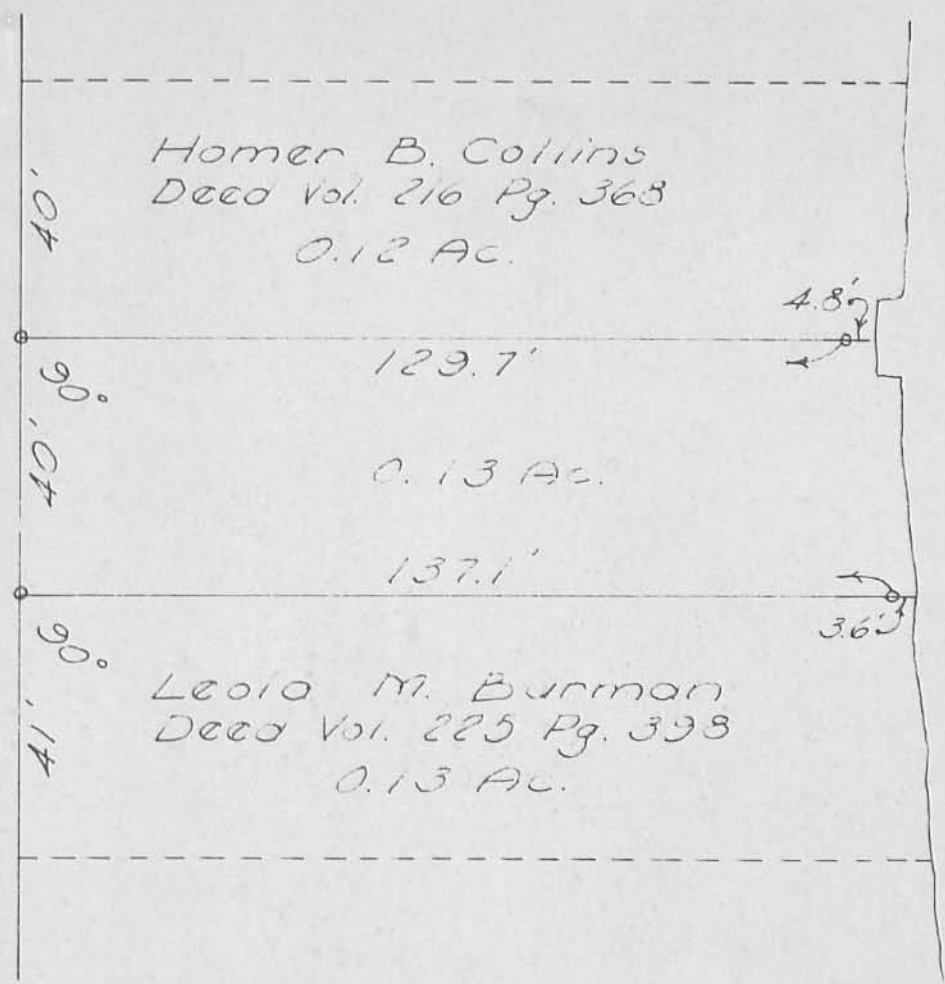
COPYRIGHT 2006 BY:
LEE SURVEYING & MAPPING CO., INC.
117 North Madriver Street
BELLEFONTAINE, OHIO 43311
(937) 593-7335

KSR D0706 4279076R L-4279-3

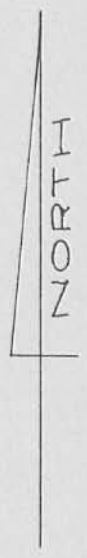
INDEXED ON MAP
2732

2 WORKING DAYS
BEFORE YOU DIG
CALL TOLL FREE 800-362-2764
OHIO UTILITIES PROTECTION SERVICE

50'
BUCHEZ DRIVE
20'
20'
25'



SEMINOLE ISLAND



REF:
 Inskeep Bk. 13
 Page 60
 o = 3/4" Pipe Set

SURVEY FOR
 WILLIAM McCLURE
 V.M.S. 12276
 STOKES TOWNSHIP-LOGAN COUNTY
 OHIO
 March 10, 1962
 SCALE 1"=30'

SURVEYED BY Dan L. Dodson
 Dan L. Dodson
 Registered Surveyor 4270



SEMINOLE ISLAND

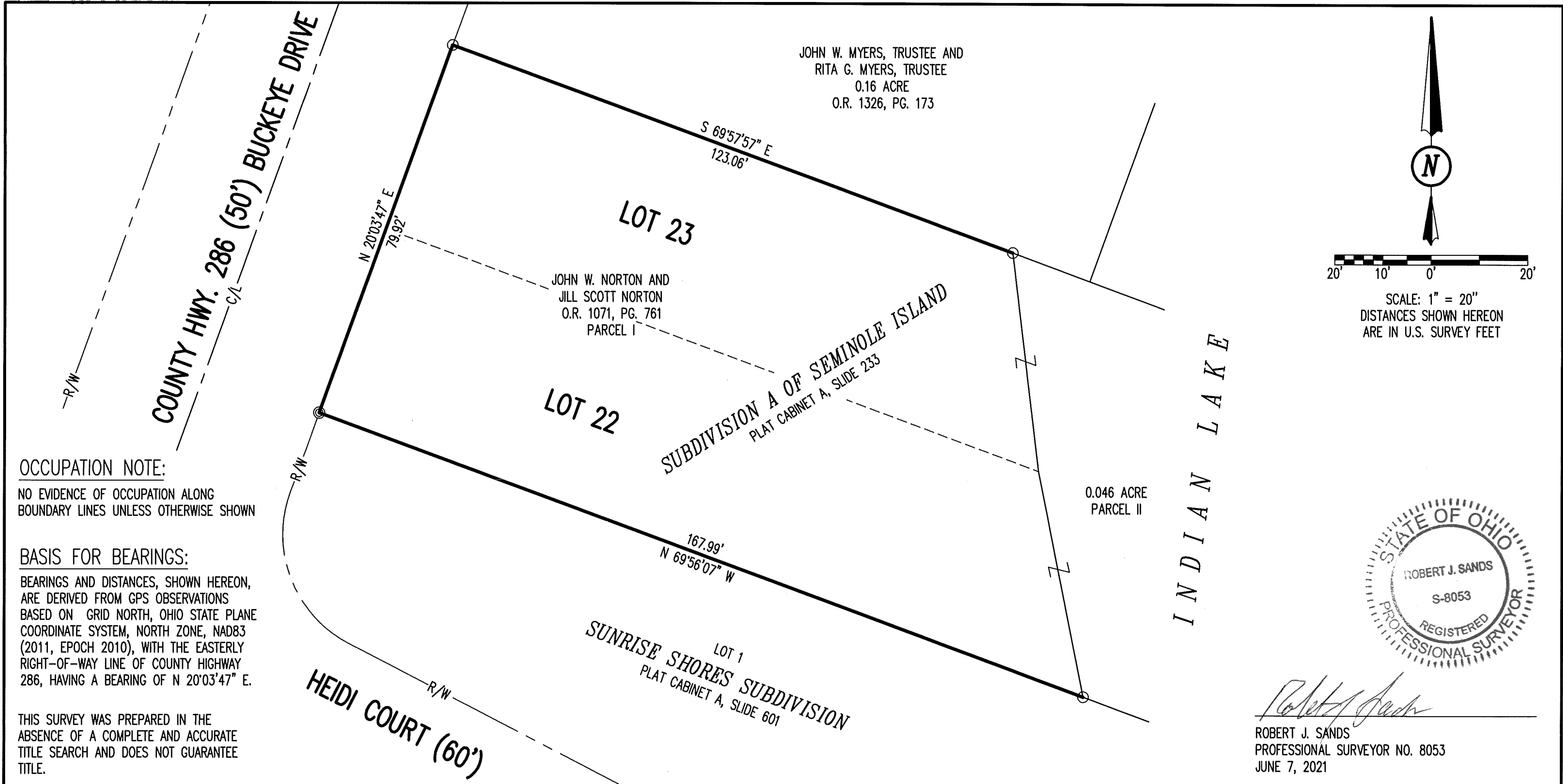
2732 - 2P

INDEXED ON MAP

on Plat Book
 4/9/62
 D.L.D.

6-28-21

APPROVED



COPYRIGHT 2021 BY:

117 N. Madriver Street • Bellefontaine, OH 43311
(937) 593-7335 • www.dlz.com
Project #2121-2074.00

LEGEND	
○ 5/8 INCH IRON REBAR FOUND	O.R. = OFFICIAL RECORD
◎ 3/4 INCH IRON PIPE FOUND	PG. = PAGE
R/W = RIGHT-OF-WAY	HWY. = HIGHWAY
C/L = CENTER-LINE	

RETRACEMENT SURVEY
 PART OF LOTS 22 & 23
 VIRGINIA MILITARY SURVEY 12276
 STOKES TOWNSHIP
 LOGAN COUNTY, OHIO

DRAWN BY:	DESCRIPTION	REV. NO.	DATE
KSS			6/7/2021

INDEXED ON MAP
2732