

BLUE JACKET PATH 35'

3/4" PIPE FOUND

3/4" PIPE FOUND

TECUMSEH PATH 35'

BIG BEAR PATH 35'

682.68

682.68

17.5'

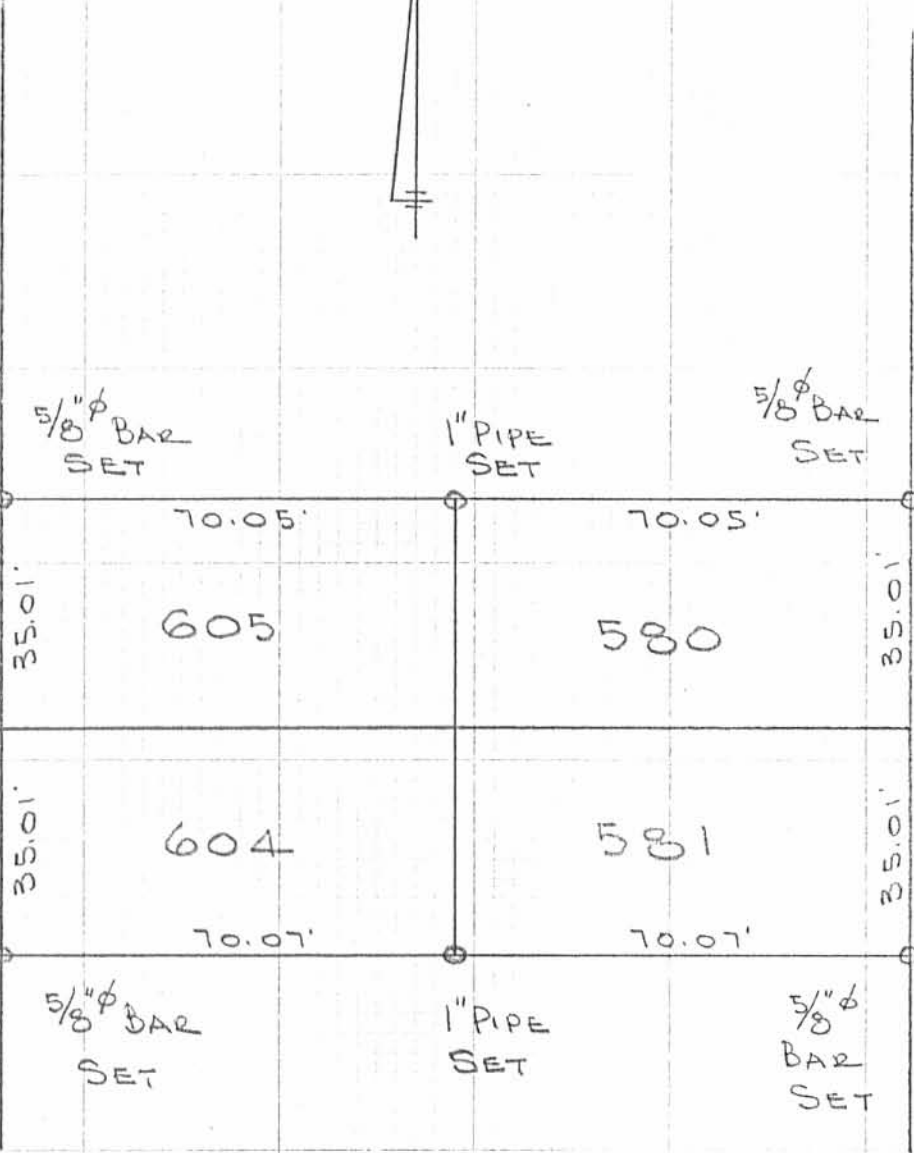
17.5'

70.02'

70.02'

17.5'

17.5'

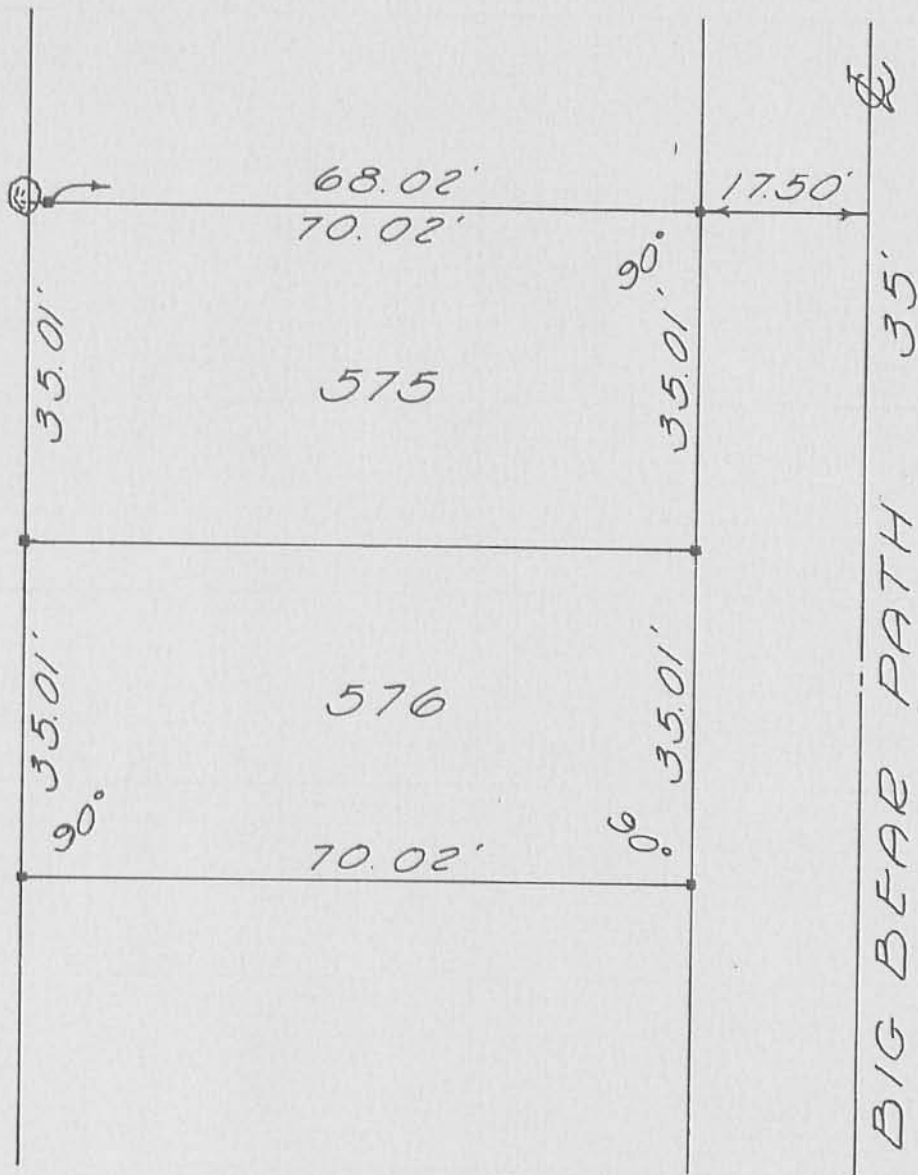


SURVEY OF  
 LOTS 580-581-604-605  
 CHIPPEWA PARK No. 1  
 LOGAN COUNTY, OHIO  
 JUNE 1, 1974  
 SCALE 1" = 30'

INDEXED ON MAP  
 3290

- 1P

DAN L. DOOSON  
 REG. SURVEYOR 4270  
 BELLEFONTAINE, OHIO  
 BL 20/58



REFERENCE:

Logan Co. Eng. F.B. 702, pg. 46  
 Insteep Bk. 13, pg. 69

■ - 1/2" # Bar Set

SURVEY OF  
 LOTS 575-576  
 CHIPPEWA PARK NO. 1  
 STOKES TOWNSHIP  
 LOGAN COUNTY, OHIO

August 15, 1962  
 Scale 1" = 20'

*Dan L. Dodson*

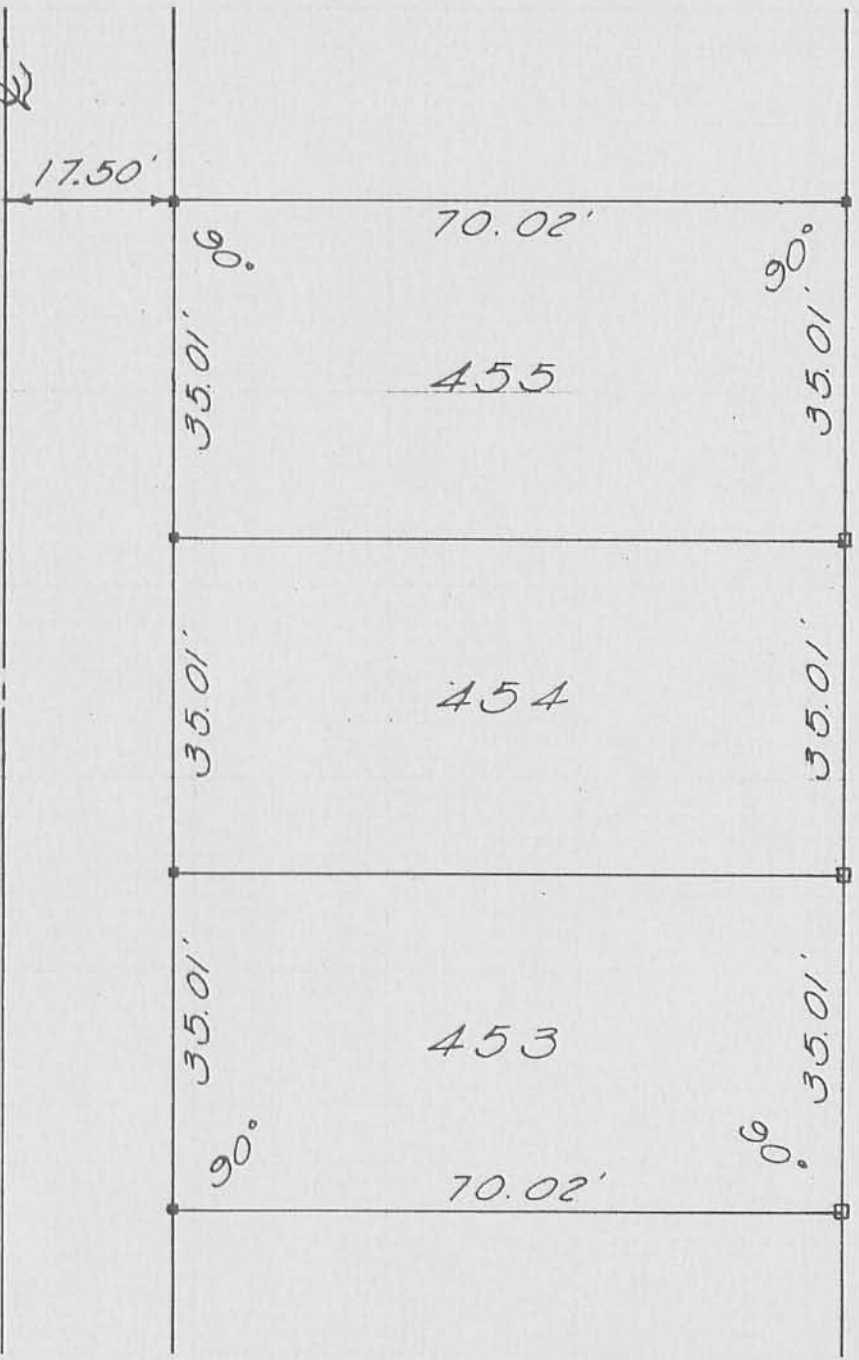
Dan L. Dodson  
 Registered Surveyor 4270  
 Bellefontaine, Ohio

3290 -2P

INDEXED ON MAP



BIG BEAR PATH 35'



REFERENCE:

Logan Co. Eng. F.B. 702, pg. 46  
Inskip Bk. 13, pg. 69

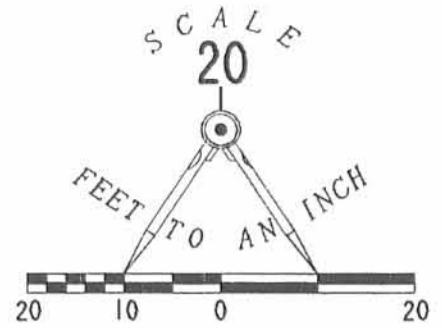
- = 1/2"  $\phi$  Bar Set
- ◻ = 5/8"  $\phi$  Bar Set

SURVEY OF  
LOTS 453, 454, 455  
CHIPPEWA PARK NO. 1  
STOKES TOWNSHIP  
LOGAN COUNTY, OHIO

August 15, 1962  
Scale 1" = 20'

*Dan L. Dodson*  
Dan L. Dodson  
Registered Surveyor 4270  
Bellefontaine, Ohio

3290 -3P  
INDEXED ON MAP



N 00° 00' 00" E  
560.10'  
TO THE SOUTH RIGHT-OF-WAY OF  
BLUE JACKET PATH

CHIPPEWA PARK ALLOTMENT NO. 1  
PLAT CABINET A. SLIDE 223

LEGEND

● 5/8" IRON ROD SET

BIG BEAR PATH (35' WIDE)

LOT 576

LOT 454

LOT 421

LOT 577

LOT 453

LOT 422

LOT 578

LOT 452

LOT 423

LOT 579

LOT 451

LOT 424

LOT 580

LOT 450

LOT 425

N 00° 00' 00" E  
105.02'

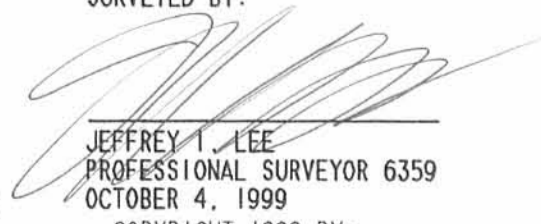
S 89° 59' 06" E  
70.34'

S 00° 01' 38" E  
105.03'

N 89° 58' 28" W  
70.39'

RETRACEMENT SURVEY OF  
LOTS 451, 452 & 453  
CHIPPEWA PARK ALLOTMENT NO. 1  
PLAT CABINET A. SLIDE 223  
VIRGINIA MILITARY SURVEY 12276  
STOKES TOWNSHIP  
LOGAN COUNTY, OHIO

SURVEYED BY:

  
JEFFREY I. LEE  
PROFESSIONAL SURVEYOR 6359  
OCTOBER 4, 1999



COPYRIGHT 1999 BY:  
LEE SURVEYING & MAPPING CO., INC.  
117 North Madriver Street  
BELLEFONTAINE, OHIO 43311  
(937) 593-7335

2 WORKING DAYS  
**BEFORE YOU DIG**  
CALL TOLL FREE **800-362-2764**  
OHIO UTILITIES PROTECTION SERVICE.

INDEXED ON MAP  
3290

-4P

ORIGINAL STAMP IN GREEN

D-358

MSHELTON

L-2816-3



LOTS 575-576-453-454-455  
CHIPPEWA No. 1

A = Iron Found  
B = 3/4" pipe found  
C = P.K. nail set

LINE	PLAT	MEAS
A-B	1155.0	1155.3 +0.3
A-C	507.5	507.64 Corrected Dist

LOTS = 35.01 x 70.00

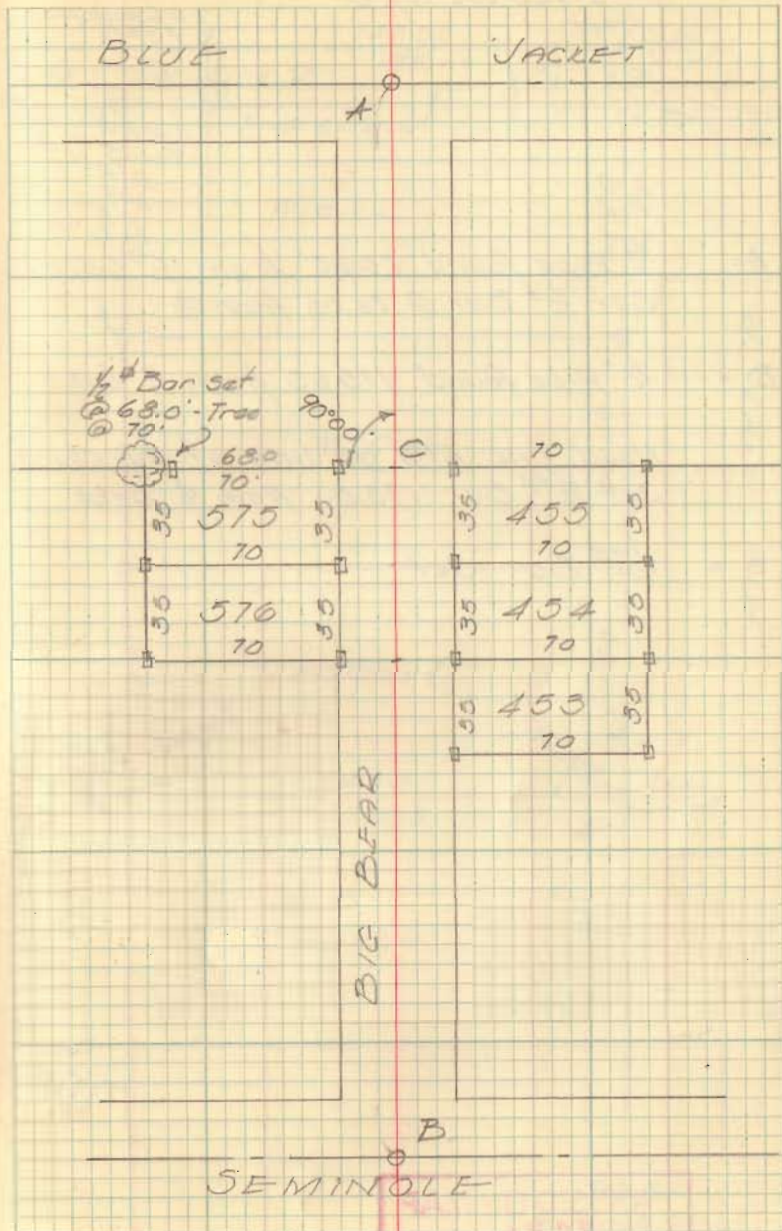
□ = 1/2" Bar Set

INDEXED ON MAP  
3290

Dodson  
Geealin

8-15-62

42

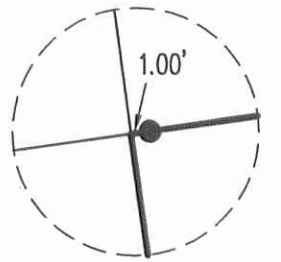




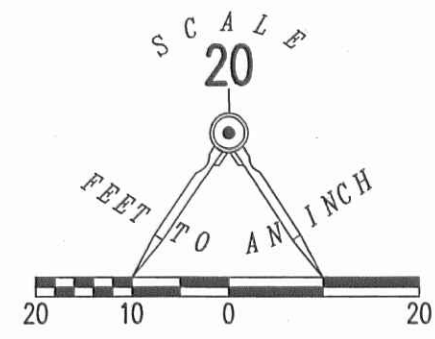


10-27-14

**APPROVED**

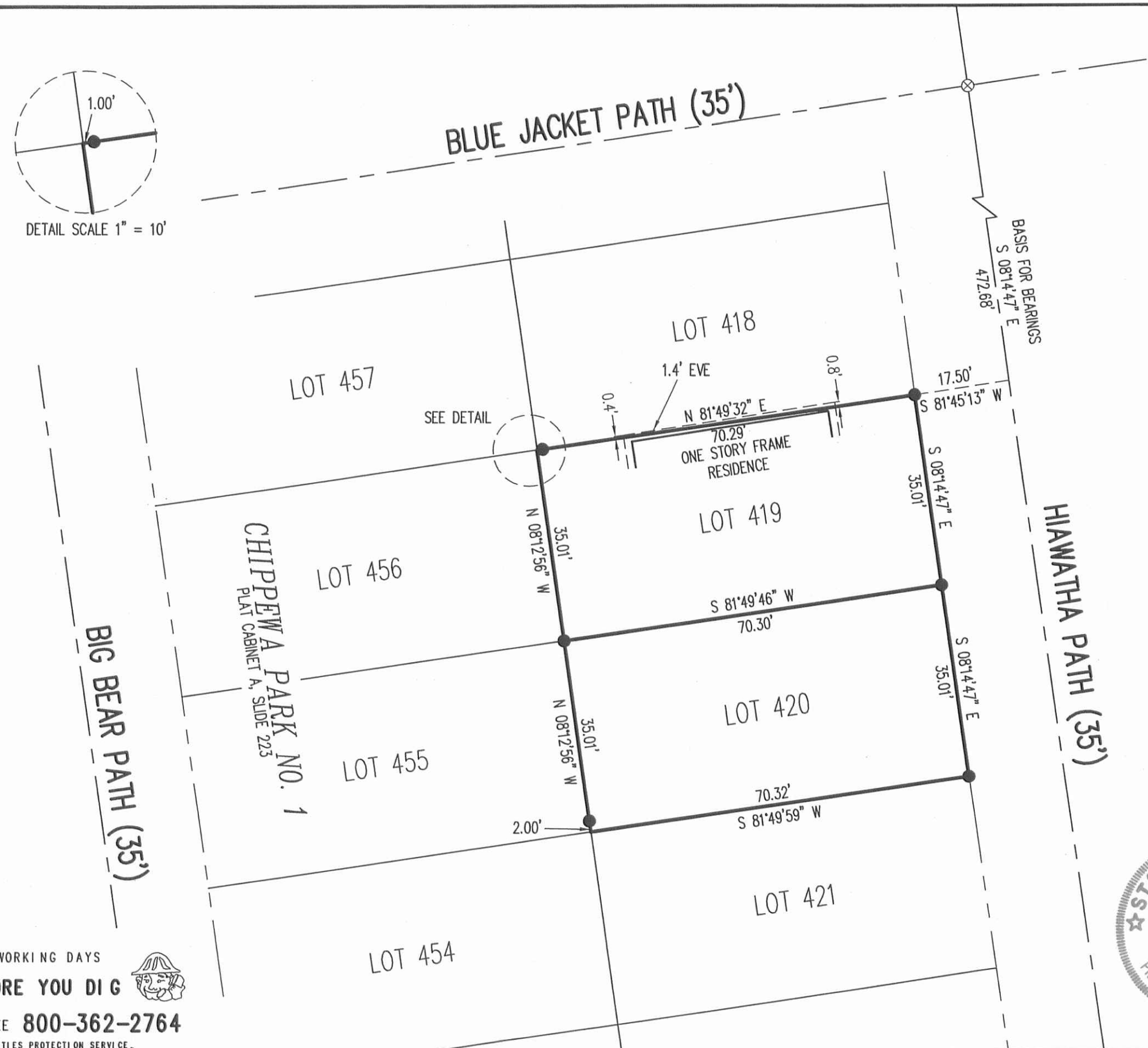


DETAIL SCALE 1" = 10'



LEGEND

- 5/8 INCH IRON ROD SET WITH PLASTIC I.D. CAP STAMPED "LSM7437"
- ⊗ RAIL ROAD SPIKE FOUND



**RETRACEMENT SURVEY OF  
ALL OF LOTS 419 AND 420  
CHIPPEWA PARK NO. 1  
PLAT CABINET A, SLIDE 223  
VIRGINIA MILITARY SURVEY 12276  
STOKES TOWNSHIP  
LOGAN COUNTY, OHIO**

SURVEYED BY:

*William K. Bruce*

WILLIAM K. BRUCE  
PROFESSIONAL SURVEYOR 7437  
OCTOBER 15, 2014



COPYRIGHT 2014 BY:  
**LEE SURVEYING & MAPPING CO., INC.**  
117 North Madriver Street  
BELLEFONTAINE, OHIO 43311  
(937) 593-7335  
WWW.LSMINC.US  
surveys@lsminc.us  
ADW D0914 58180914 L-5818-3

2 WORKING DAYS  
**BEFORE YOU DIG**  
CALL TOLL FREE **800-362-2764**  
OHIO UTILITIES PROTECTION SERVICE

INDEXED ON MAP  
3290 5P