

Survey of Lot 1744
 Chippewa Park # 3
 Stokes Township
 Logan County, Ohio
 June 23, 1965
 Scale 1" = 20'

Reference:
 Original Plot of Chippewa Park # 3

IP
 3834

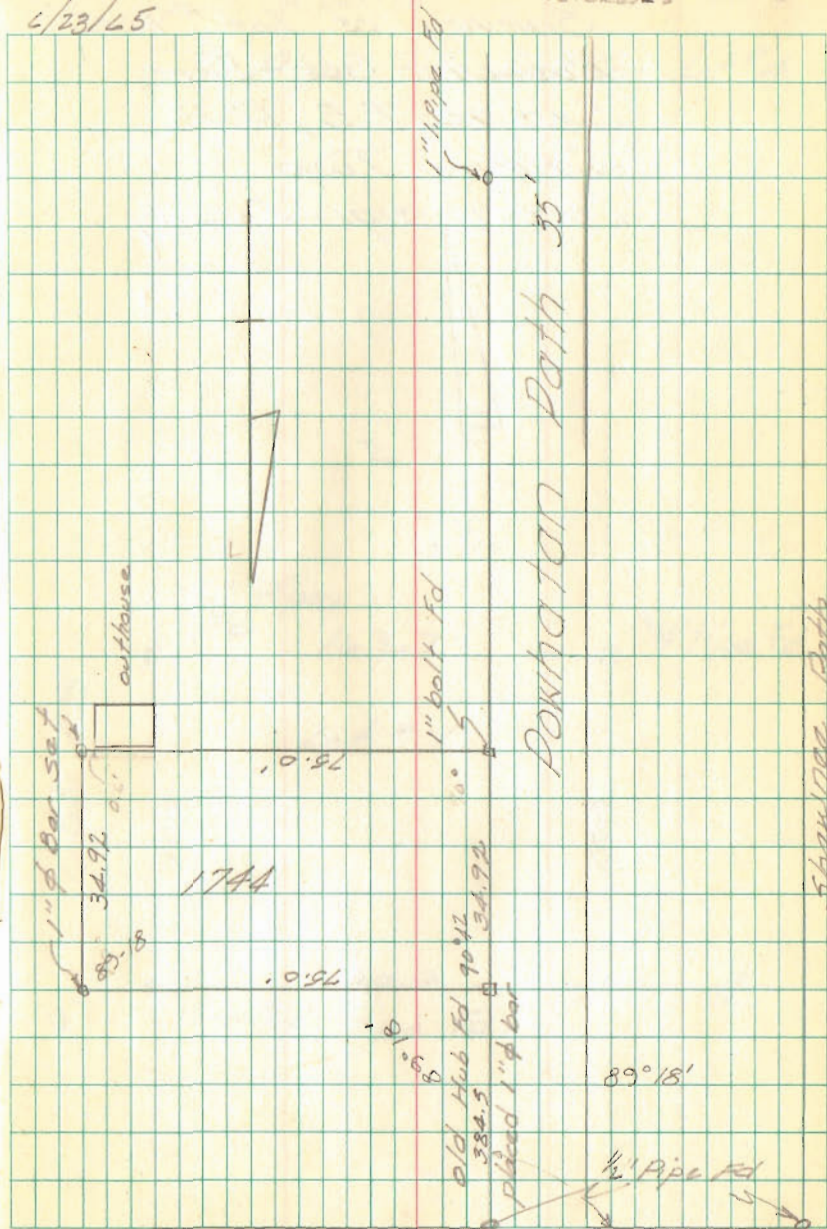
INDEXED ON MAP

Dan L. Dodson
 Reg. Surveyor #4270
 Bellefontaine, Ohio

Survey of lot #1744
 Chippawa Park #3
 Mrs. Francis Heil
 Springfield, Ohio

Geaslin
 Ricker's

6/23/45



Shawnee Path

INDEXED ON MAP
 3834

Blue Jacket Path 35'

Lots 1637-1639 & 1737-1739
CHIPPEWA PARK No. 3

A = 3/4" Pipe Found

B = " " "

C = " " "

D = " " " @ Radius Pt lot 1617

E = " " " @ S.E. cor lot 1761

F = 3/4" Pipe Found - "OK"

A to C Meas 184.90 PLAT = 185.0

A to E " 1002.12 " = 1004.00

$$1002.12 / 1004.00 = 0.99813 \quad \times 35 = 34.93$$

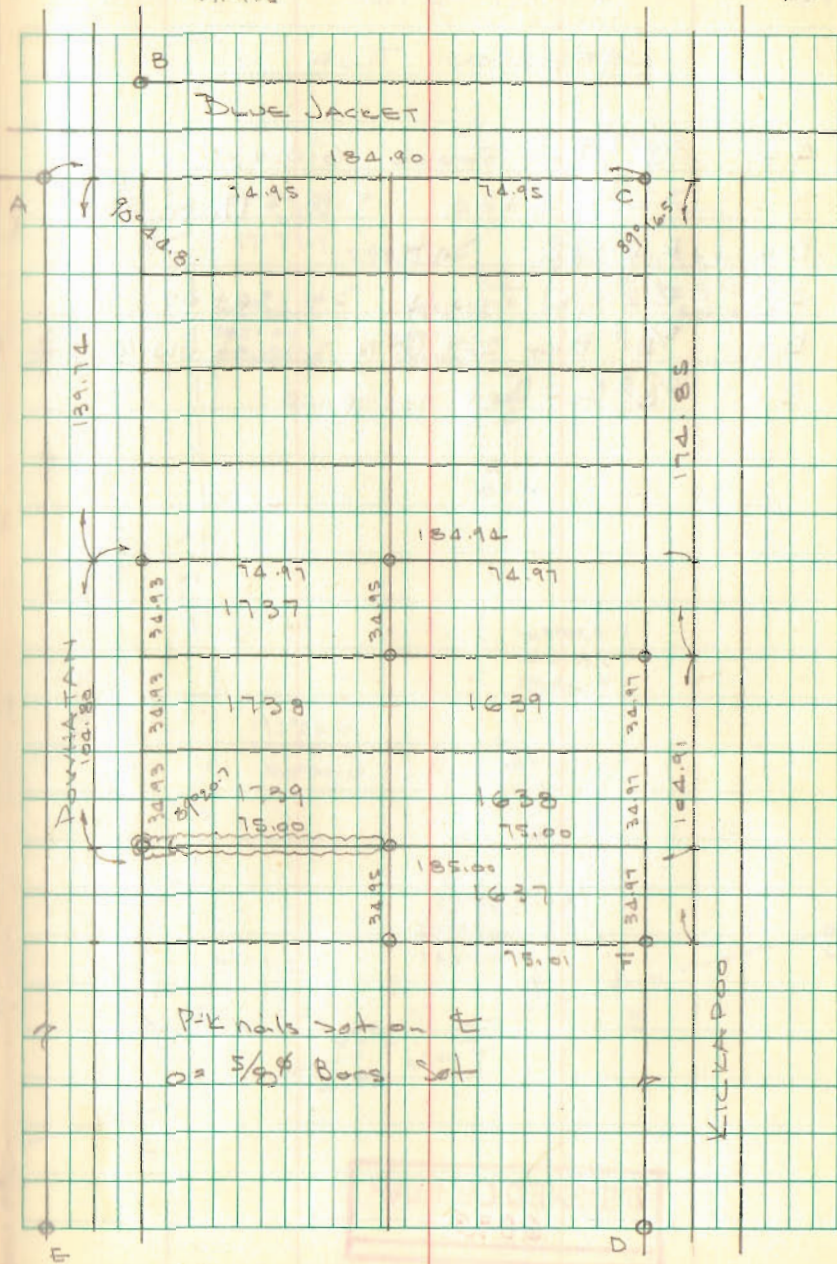
C to D Meas 991.14 PLAT = 992.0

$$991.14 / 992.0 = 0.99913 \quad \times 35 = 34.97$$

Dodson
Art's

5/7/77

43



INDEXED ON MAP

3834