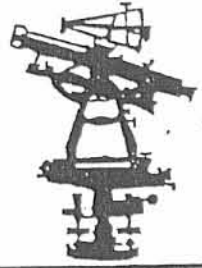




EDWARDS SURVEYING
110 SOUTH MAIN STREET
URBANA, OHIO 43078
(937) 653-6508



LEGAL DESCRIPTION FOR THE THIRD NATIONAL BANK AND TRUST COMPANY'S 0.108 ACRE TRACT

Being situate in the State of Ohio, County of Logan, Township of Washington, and being a part of Virginia Military Survey 12276, and being more particularly described as follows:

Beginning at a 5/8" diameter iron bar with "GEESLIN" cap found 0.1' below grade at the North terminus of Township Road 292 (50' right-of-way), also being at the Southeast corner of a 1.03 acre tract conveyed to Timothy M. Hagedorn by Deed recorded in Official Record 105, Page 793 of the Logan County Records and also being at a Southwest corner of a 0.911 acre tract also conveyed to Timothy M. Hagedorn by Deed recorded in Official Record 401, Page 185 of the Logan County Records;

thence with the South line of said Hagedorn's 0.911 acre tract, N-59°26'36"-E, 76.35'(feet) to a 5/8" diameter iron bar with "GEESLIN" cap found at grade at the Southeast corner of said Hagedorn's 0.911 acre tract, also being at a West corner of a 44.288 acre tract conveyed to the State of Ohio; Department of Natural Resources, by Deed recorded in Official Record 418, Page 235 of the Logan County Records;

thence with the West line of said State of Ohio 's 44.288 acre tract, S-0°04'55"-W, 145.22'(feet) to a 5/8" diameter iron bar with "GEESLIN" cap found at grade on the East line of aforementioned Township Road 292;

thence with the East line of Township Road 292 the following two (2) courses:

- 1) N-31°09'24"-W, 92.31'(feet) to a 5/8" diameter iron bar found 0.1' below grade;
- 2) N-32°58'00"-W, 32.68'(feet) to the place of beginning;

Containing 0.108 acre, but being subject to the rights of all legal highways and all easements of record.

Being a part of an original 91 acre tract conveyed to The Third National Bank and Trust Company, Trustees for UMA Clark Wolf, by Deed recorded in Deed Volume 311, Page 200 of the Logan County Deed Records.

The foregoing description prepared by and in accordance with a survey by William D. Edwards, Professional Surveyor No. 7574, December 5, 2000. All iron bars set are 5/8" x 30" iron re-bar with a yellow plastic cap stamped "EDWARDS PS 4792 PS 7574". The basis of bearings for the herein described tract is the West line of Hagedorn's 0.911 acre tract per Official Record 418, Page 235 of the Logan County Records (N-19°50'45"-W).



William D. Edwards

William D. Edwards
Professional Surveyor No. 7574

INDEXED ON MAP
30666

Received 6-9-99 OK/ced

LESLIE H. GEESLIN

REGISTERED SURVEYOR 5248

P. O. BOX 274

RUSHSVLVANIA, OHIO 43347

TELEPHONE: (937) 468-2793

FAX: (937) 468-2080

WOLF TRUST SURVEY

May, 1999

The following described real estate situated in the State of Ohio, County of Logan, Townships of Stokes and Washington, being part of Virginia Military Survey 12276 and more particularly described as follows:

Beginning at a 5/8 inch iron bar found at the northeast corner of Timothy M. Hagedorn's 0.911 acre tract as described in O. R. Vol. 401 Page 187.

Thence with said Hagedorn's north line S 59°-26'-31" W 311.23 feet to a point on the shore line of Indian Lake, passing a 5/8 inch iron bar found at 305.20 feet.

Thence with the shore line of Indian Lake the following fifty-seven courses:

1. N 38°-48'-05" W 69.21 feet to a point.
2. N 37°-30'-26" W 104.76 feet to a point.
3. Thence N 47°-42'-33" W 46.60 feet to a point from which a 5/8 inch iron bar set for reference measures N. 33° 13' 39" W. 31.47 feet.
4. N 40°-08'-45" W 112.96 feet to a point.
5. N 36°-07'-54" W 77.94 feet to a point.
6. N 25°-12'-44" W 29.66 feet to a point from which a 5/8 inch iron bar set for reference measures N. 23° 06' 54" E. 41.11 feet.
7. N 5°-56'-25" E 54.47 feet to a point.
8. N 41°-56'-40" W 59.35 feet to a point.
9. N 27°-20'-02" W 97.80 feet to a point.
10. N 24°-11'-44" W 45.31 feet to a point.
11. N 17°-24'-43" W 46.19 feet to a point.
12. N 16°-17'-02" E 41.67 feet to a point.
13. N 9°-59'-17" E 29.21 feet to a point.
14. N 24°-25'-00" W 52.54 feet to a point.
15. N 35°-16'-53" E 26.44 feet to a point.
16. N 9°-56'-50" W 18.14 feet to a point.
17. N 28°-00'-00" E 29.74 feet to a point.
18. S 76°-12'-32" E 9.85 feet to a point from which a 5/8 inch iron bar set for reference measures N. 56° 40' 11" E. 19.95 feet.
19. N 16°-34'-21" E 26.75 feet to a point.
20. N 39°-12'-38" W 17.64 feet to a point.
21. N 11°-09'-16" E 50.28 feet to a point.
22. N 78°-51'-09" E 18.94 feet to a point from which a 5/8 inch iron bar set for reference measures S. 70° 56' 53" E 103.86 feet.
23. N 24°-10'-27" E 28.27 feet to a point.
24. N 58°-31'-49" E 17.57 feet to a point.
25. N 5°-22'-13" E 55.48 feet to a point.
26. N 12°-56'-41" E 47.25 feet to a point.
27. N 35°-08'-37" E 24.96 feet to a point.
28. S 80°-30'-58" W 21.53 feet to a point.
29. N 13°-26'-51" W 11.86 feet to a point.
30. N 65°-01'-22" E 12.62 feet to a point.
31. N 22°-08'-27" W 28.05 feet to a point.

INDEXED ON 3866

32. N 17°-22'-23" E 56.17 feet to a point.
33. N 29°-01'-15" W 29.76 feet to a point.
34. N 0°-35'-29" W 39.62 feet to a 5/8 inch iron bar set.
35. S 42°-32'-13" E 30.60 feet to a point.
36. S 50°-58'-40" E 36.49 feet to a point.
37. S 12°-41'-58" W 42.68 feet to a point.
38. S 19°-51'-57" E 37.98 feet to a point.
39. S 44°-52'-28" E 39.95 feet to a point.
40. S 74°-07'-38" E 18.36 feet to a point.
41. S 18°-11'-33" E 40.68 feet to a point.
42. S 80°-57'-41" E 28.96 feet to a point.
43. S 9°-30'-53" E 26.20 feet to a point.
44. S 72°-02'-06" E 54.73 feet to a point.
45. N 81°-44'-59" E 60.88 feet to a point.
46. N 77°-00'-10" E 57.28 feet to a point.
47. N 61°-09'-37" E 72.89 feet to a point.
48. N 2°-48'-52" W 58.87 feet to a point.
49. N 46°-08'-52" E 27.30 feet to a point.
50. N 66°-45'-03" E 40.79 feet to a point from which a 5/8 inch iron bar set for reference measures S. 21° 32' 42" W. 9.99 feet.
51. S 27°-22'-21" E 42.11 feet to a point.
52. S 15°-43'-15" E 49.53 feet to a point.
53. S 54°-58'-19" E 35.68 feet to a point.
54. S 69°-07'-30" E 52.34 feet to a point.
55. N 82°-12'-20" E 24.67 feet to a point.
56. N 75°-48'-12" E 14.15 feet to a point.
57. N 24°-53'-53" E 23.76 feet to a 5/8 inch iron bar set.

Thence leaving the shore line of Indian Lake S 36°-23'-03" E 153.90 feet to a 5/8 inch iron bar set.

Thence S 49°-02'-58" E 318.52 feet to a 5/8 inch iron bar set.

Thence S 34°-22'-37" E 134.24 feet to a 5/8 inch iron bar set.

Thence S 87° 13' 32" E 355.32 feet to a magnetic nail found in the centerline of State Route 368 at the southwest corner of James P. Wolf, IV's 1.358 acre tract as described in O. R. Vol. 409 Page 839, passing a 5/8 inch iron bar set at 332.16 feet

Thence with said Wolf's south line S 85° 04' 00" E. 140.87 feet to a point in the shore line of Indian Lake, passing 5/8 inch iron bars found at 22.50 feet and 122.50 feet.

Thence with the shore line of Indian Lake the following forty-two courses:

1. S 17°-45'-15" W 113.81 feet to a point.
2. S 0°-25'-24" E 101.18 feet to a point.
3. S 48°-10'-44" E 33.23 feet to a point.
4. S 16°-11'-04" W 118.05 feet to a point.
5. S 12°-09'-37" E 51.03 feet to a point.
6. S 8°-16'-59" E 38.09 feet to a point.
7. S 76°-03'-52" E 36.21 feet to a point.
8. N 19°-07'-38" E 38.42 feet to a point.
9. N 17°-09'-55" E 48.67 feet to a point from which a 5/8 inch iron bar set for reference measures S. 74° 17' 39" E. 41.29 feet.

10. N 36°-22'-17" E 64.56 feet to a point.
11. S 65°-53'-54" E 51.04 feet to a point.
12. S 3°-11'-45" E 66.34 feet to a point.
13. S 25°-41'-40" W 67.75 feet to a point.
14. S 7°-29'-13" E 46.25 feet to a point.
15. S 4°-10'-27" E 74.82 feet to a point.
16. S 13°-01'-36" E 43.06 feet to a point.
17. S 76°-51'-29" W 21.07 feet to a point.
18. S 1°-23'-21" E 54.89 feet to a point.
19. S 30°-58'-46" E 32.07 feet to a point.
20. S 14°-31'-06" E 57.92 feet to a point.
21. S 32°-59'-52" E 51.13 feet to a point.
22. S 77°-29'-10" W 22.56 feet to a point from which a 5/8 inch iron bar set for reference measures S. 41° 57' 30" W. 18.39 feet.
23. S 5°-18'-37" E 75.00 feet to a point.
24. S 31°-29'-18" E 31.58 feet to a point.
25. S 12°-53'-43" E 35.21 feet to a point.
26. N 79°-03'-07" E 24.41 feet to a point.
27. N 7°-54'-17" E 21.49 feet to a point.
28. N 13°-10'-36" W 20.52 feet to a point.
29. N 7°-34'-30" E 49.70 feet to a point.
30. N 25°-05'-48" E 34.96 feet to a point.
31. S 32°-21'-24" E 8.92 feet to a point.
32. S 4°-12'-31" W 54.72 feet to a point.
33. S 12°-24'-57" W 64.80 feet to a point.
34. S 13°-55'-14" W 95.54 feet to a point.
35. S 23°-13'-47" W 47.82 feet to a point.
36. N 62°-05'-32" W 114.14 feet to a point.
37. S 52°-55'-27" W 71.31 feet to a point from which a 5/8 inch iron bar set for reference measures N. 40° 14' 12" E 35.03 feet
38. S 17°-42'-22" W 84.78 feet to a point.
39. S 37°-55'-02" E 76.74 feet to a point.
40. S 12°-40'-38" W 67.55 feet to a point.
41. S 50°-53'-52" W 106.41 feet to a point.
42. S 30°-32'-44" W 129.28 feet to a point.

Thence S 57°-15'-14" W 80.05 feet to a 1 inch iron pipe found at the intersection of the north right of way line of Township Road 292 with the west right of way line of said S. R. 368, passing a 5/8 inch iron bar set at 32.84 feet and a magnetic nail set in the centerline of said S. R. 368 at 57.49 feet.

Thence with the north right of way line of said T. R. 292 the following seven courses:

1. S 73°-56'-23" W 91.32 feet to a 1 inch iron pipe found.
2. with a 337.90 foot radius curve to the left, having a central angle of 24° 46' 28", the chord of which measures S. 62° 54' 13" W. 144.97 feet, an arc distance of 146.11 feet to a 1 inch iron pipe found.
3. with a 144.40 foot radius curve to the right, having a central angle of 82° 12' 12", the chord of which measures N. 88° 59' 21" W. 189.86 feet, an arc distance of 207.17 feet to a 1 1/4 inch iron pipe found.

4. with a 48.00 foot radius curve to the right, having a central angle of $49^{\circ} 18' 02''$, the chord of which measures N. $23^{\circ} 06' 52''$ W. 40.04 feet, an arc distance of 41.30 feet to a 5/8 inch iron bar set.
5. with a 1192.00 foot radius curve to the left, having a central angle of $19^{\circ} 50' 00''$, the chord of which measures N. $7^{\circ} 58' 27''$ W. 410.56 feet, an arc distance of 412.62 feet to a 1 1/4 inch iron pipe found.
6. N $17^{\circ}-53'-27''$ W 75.00 feet to a 5/8 inch iron bar set.
7. with a 1472.00 foot radius curve to the left, having a central angle of $11^{\circ} 27' 22''$, the chord of which measures N. $23^{\circ} 37' 55''$ W. 293.83 feet, an arc distance of 294.32 feet to a 5/8 inch iron bar set.

Thence leaving the north right of way of said T. R. 292 N. $00^{\circ} 04' 55''$ E. 145.22 feet to a 5/8 inch iron bar found at the southeast corner of said Timothy M. Hagedorn's 0.911 acre tract.

Thence with said Hagedorn's east line N. $19^{\circ} 50' 45''$ W. 289.54 feet to the place of beginning.

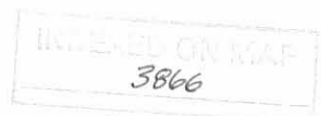
Containing 44.288 acres more or less of which 20.708 acres is in Stokes Township and 23.580 acres are in Washington Township and 1.370 acres are in the right of way of State Route 368.

The above described 44.288 acre tract being part of The Third National Bank and Trust Company, Trustees for Uma Clark Wolf's 75.9786 acre tract as described in D. B. Vol. 311 Page 200.

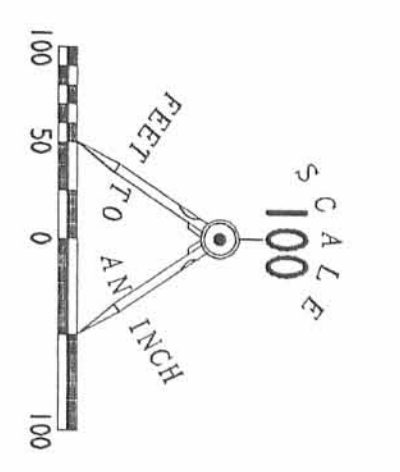
Bearings are based on an assumed bearing (S. $73^{\circ} 56' 23''$ W) for the north right of way line of Township Road 292 in this field survey by Leslie H. Geeslin, Reg. Surveyor 5248 on April 12, 1999.



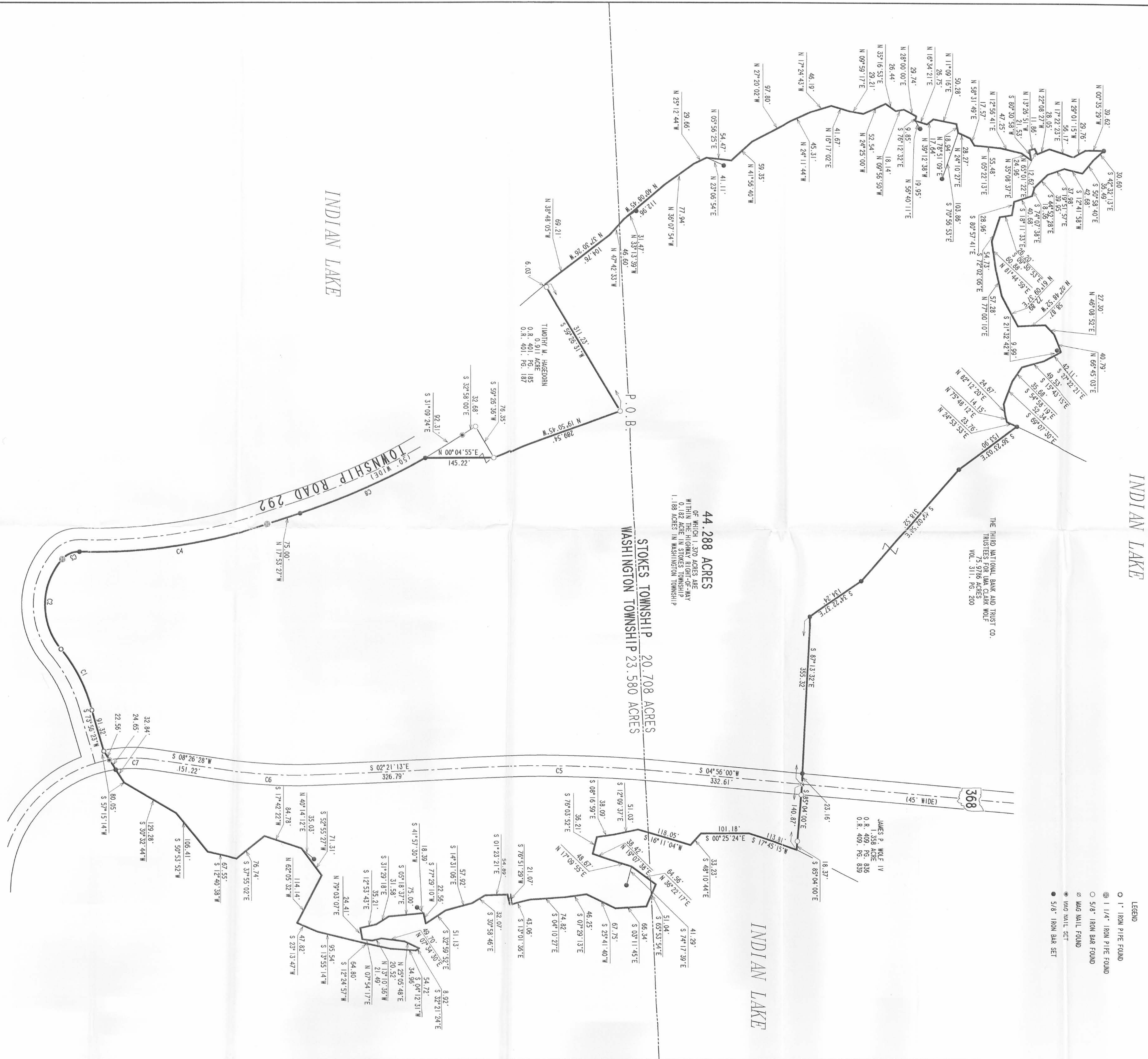
Leslie H. Geeslin



2D-4



- LEGEND
- 1" IRON PIPE FOUND
 - ⊙ 1 1/4" IRON PIPE FOUND
 - ⊙ 5/8" IRON BAR FOUND
 - ⊙ MAG NAIL FOUND
 - MAG NAIL SET
 - 5/8" IRON BAR SET



CURVE	DELTA ANGLE	RADIUS	ARC	TANGENT	CHORD	CHORD BEARINGS
C 1	24°46'28"	337.90'	146.11'	74.21'	144.97'	S 62°54'13"W
C 2	82°12'12"	144.40'	207.17'	125.98'	189.86'	N 88°59'21"W
C 3	48°18'02"	48.00'	41.30'	22.03'	40.04'	N 23°06'52"W
C 4	19°50'00"	1192.00'	412.62'	208.39'	410.56'	N 07°58'27"W
C 5	7°33'56"	2884.79'	378.28'	189.42'	378.01'	S 00°49'10"W
C 6	11°08'18"	1145.91'	222.76'	111.73'	222.41'	S 02°57'38"W
C 7	18°14'30"	284.48'	90.57'	45.67'	90.19'	S 00°35'56"E
C 8	11°27'22"	1472.00'	294.52'	147.65'	293.83'	N 23°37'55"W

SURVEY OF 44,288 ACRE TRACT
 OUT OF THE
 THE THIRD NATIONAL BANK AND TRUST CO.
 TRUSTEES FOR UMA CLARK WOLF
 75,9786 ACRES
 VOLUME 311, PAGE 200
 VIRGINIA MILITARY SURVEY 12276
 STOKES TOWNSHIP
 WASHINGTON TOWNSHIP
 LOGAN COUNTY
 OHIO



SURVEYED BY:
 LESLIE H. GESSLIN
 APRIL 12, 2005
 LEE SURVEYING & MAPPING CO., INC.
 BELLEFONTAINE, OHIO 43311
 (937) 593-7355 L-2025-1
 D-345

2 WORKING DAYS
 BEFORE YOU DIG
 CALL TOLL FREE 800-362-2764
 OHIO UTILITIES PROTECTION SERVICE



EDWARDS SURVEYING
 110 SOUTH MAIN STREET
 URBANA, OHIO 43078
 (937) 653-6508



**LEGAL DESCRIPTION FOR THE THIRD NATIONAL BANK AND TRUST COMPANY'S
 25.519 ACRE TRACT**

Being situate in the State of Ohio, County of Logan, Township of Stokes and being a part of Virginia Military Surveys 9968 & 12276, and being more particularly described as follows:

Beginning at a Mag Nail found on the centerline of State Route 368 (45' right-of-way) on a North line of 44.288 acre tract conveyed to the State of Ohio Department of Natural Resources by Deed recorded in Official Record 418, Page 235 of the Logan County Records, at the Southwest corner of a 1.358 acre tract conveyed to James P. Wolf, IV, by Deed recorded in Official Record 409, Page 839 of the Logan County Records, said Mag Nail found being, N-4°56'00"-E, 332.55'(feet) from the intersection of the centerline of said State Route 368 and the South line of Stokes Township;

thence with the North lines of said State of Ohio's 44.288 acre tract the following four (4) courses:

- 1) N-87°13'32"-W, 355.31'(feet) to a 5/8" diameter iron bar with "GEESLIN" cap found at grade, passing a 5/8" diameter iron bar with "GEESLIN" cap found at grade at 30.03'(feet);
- 2) N-34°23'47"-W, 134.20'(feet) to a 5/8" diameter iron bar with "GEESLIN" cap found at grade;
- 3) N-49°02'05"-W, 318.57'(feet) to a 5/8" diameter iron bar with "GEESLIN" cap found at grade;
- 4) N-36°20'07"-W, 153.94'(feet) to a 5/8" diameter iron bar with "GEESLIN" cap found at grade at the Southern end of a sea wall on the shore line of Indian Lake;

thence with said sea wall and the shore line of said Indian Lake the following four (4) courses:

- 1) N-53°15'59"-E, 122.54'(feet) to a Mag Nail set;
- 2) N-62°44'11"-E, 40.15'(feet) to a Mag Nail set;
- 3) N-76°05'28"-E, 72.57'(feet) to a Mag Nail set;
- 4) N-48°56'52"-E, 275.25'(feet) to a Mag Nail set on the South side of a private channel;

thence N-7°42'38"-E, 74.30'(feet) to a Mag Nail set on the North side of said private channel, on the edge of a concrete sea wall along the existing shore line of Indian Lake;

thence with the shore line of said Indian Lake and the edge of said concrete sea wall the following twelve (12) courses:

- 1) N-11°22'57"-W, 64.76'(feet) to a Mag Nail set;
- 2) N-1°29'48"-E, 16.60'(feet) to a Mag Nail set;
- 3) N-29°47'27"-E, 146.92'(feet) to a Mag Nail set;
- 4) N-61°15'11"-E, 192.63'(feet) to a Mag Nail set;
- 5) N-55°29'30"-E, 498.09'(feet) to a Mag Nail set;
- 6) N-36°05'43"-E, 72.56'(feet) to a Mag Nail set;
- 7) N-41°41'47"-E, 161.40'(feet) to a Mag Nail set;
- 8) N-26°47'22"-E, 48.44'(feet) to a Mag Nail set;
- 9) N-39°26'24"-E, 126.34'(feet) to a Mag Nail set;
- 10) N-43°54'51"-E, 48.40'(feet) to a Mag nail set;
- 11) N-70°28'25"-E, 40.20'(feet) to a Mag Nail set;
- 12) N-44°37'47"-E, 69.77'(feet) to a point at the Southwest corner of Lot 40 of the Lakeridge Subdivision No. 2 as recorded in Plat Cabinet "A", Slide 359, of the Logan County Plat Records;

INDEXED ON MAP
 3866

- 3D-1



EDWARDS SURVEYING
110 SOUTH MAIN STREET
URBANA, OHIO 43078
(937) 653-6508



thence with the South line of said Lot 40, S-70°12'48"-E, 78.15'(feet) to a Mag Nail set on the centerline of aforementioned State Route 368, passing for reference a 3/4" diameter iron pipe found at 0.1'(foot) below grade at 24.26'(feet) and also passing for reference a 1.25"(inch) diameter iron pipe found 0.1'(foot) below grade on the right-of-way line of State Route 368 at 55.60'(feet);

thence with the centerline of State Route 368 and a Curve to the left having a Radius of 381.30'(feet) and a Delta Angle of 4°13'22", an Arc Distance of 28.10'(feet), to a Mag Nail set, the Chord of which bears, S-16°14'05"-W, 28.10'(feet);

thence continuing with the centerline of State Route 368, S-14°07'24"-W, 72.76'(feet) to a Mag Nail set;

thence with the South line of Lot 1 of Lakeridge Subdivision as recorded in Plat Cabinet "A", Slide 354 of the Logan County Plat Records, and the South line thereof projected West, S-69°26'06"-E, 110.87'(feet) to a point on the existing shore line of Indian Lake, passing for reference an iron bar set on the right-of-way line of State Route 368 at 22.64'(feet) and also passing for reference a 1"(inch) diameter iron pipe found projecting 0.6'(feet) above grade at 94.01'(feet);

thence with the existing shore line of Indian Lake the following five (5) courses:

- 1) S-20°38'23"-W, 32.28'(feet) to a point from which an iron bar set for reference bears, N-77°36'44"-W, 10.00'(feet);
- 2) S-12°23'16"-W, 115.73'(feet) to a point from which an iron bar set for reference bears, N-65°19'38"-W, 10.00'(feet);
- 3) S-24°40'22"-W, 86.43'(feet) to a point from which an iron bar set for reference bears, N-53°37'28"-W, 10.00'(feet)
- 4) S-36°22'32"-W, 115.99'(feet) to a point from which an iron bar set for reference bears, N-58°48'27"-W, 10.00'(feet);
- 5) S-31°11'33"-W, 178.39'(feet) to a point on the North line of a private channel from which an iron bar set for reference bears, N-58°48'27"-W, 10.00'(feet);

thence S-13°15'18"-W, 85.41'(feet) to a point on the South side of said private channel from which an iron bar set for reference bears, S-83°47'56"-W, 10.00'(feet);

thence continuing with the shore line of said Indian Lake, S-6°12'04"-E, 40.01'(feet) to a point at the Northeast corner of a 0.224 acre tract conveyed to Freidhelm Langhart, et al., Co-Trustees, as recorded in Official Record 393, Page 14 of the Logan County Records;

thence with the North line of said Freidhelm Langhart's 0.224 acre tract, S-75°22'52"-W, 209.63'(feet) to a Mag Nail set on the centerline of aforementioned State Route 368, passing for reference a 5/8" diameter iron bar found 0.4'(foot) below grade at 15.85'(feet), and also passing for reference a 5/8" diameter iron bar with "GEESLIN" cap found at grade on the right-of-way line of State Route 368 at 185.38'(feet);

thence with the centerline of State Route 368 the following three (3) courses:

- 1) with a Curve to the left having a Radius of 190.98'(feet), a Delta Angle of 11°40'06", an Arc Distance of 38.89'(feet) to a railroad spike found 0.15'(foot) below grade, the Chord of which bears, S-40°57'09"-E, 38.83'(feet);
- 2) S-46°41'02"-E, 90.87'(feet) to a railroad spike found at 0.15'(foot) below grade;
- 3) with a Curve to the right having a Radius of 114.56'(feet), a Delta Angle of 104°28'11", an Arc Distance of 208.88'(feet) to a Mag Nail set at the Southwest corner of 0.254 acre tract conveyed to Robert D. Bayes, et ux., by Deed recorded in Official Record 268, Page 458 of the Logan County Records, the Chord of which bears, S-5°29'31"-W, 181.13'(feet);

thence with the South line of said Bayes 0.254 acre tract, S-59°00'18"-E, 110.57'(feet) to a point on the existing shore line of Indian Lake, passing for reference an 0.75"(inch)



EDWARDS SURVEYING
110 SOUTH MAIN STREET
URBANA, OHIO 43078
(937) 653-6508



diameter iron pipe found at 25.28'(feet), also passing for reference the right-of-way line of State Route 368 at 24.69'(feet), and also passing for reference an iron bar set at 100.57'(feet);

thence with the shore line of Indian Lake the following ten (10) courses;

- 1) S-37°30'17"-W, 59.74'(feet) to a point;
- 2) S-43°29'36"-W, 24.61'(feet) to a point;
- 3) S-55°50'30"-W, 35.39'(feet) to a point from which an iron bar set for reference bears, N-48°46'49"-W, 10.00'(feet);
- 4) S-60°20'03"-W, 43.88'(feet) to a point from which an iron bar set for reference bears, N-1°04'55"-W, 10.00'(feet);
- 5) S-88°55'05"-W, 171.14'(feet) to a point from which an iron bar set for reference bears, N-30°52'22"-W, 10.00'(feet);
- 6) S-59°07'38"-W, 65.08'(feet) to a point from which an iron bar set for reference bears, N-69°11'11"-W, 10.00'(feet);
- 7) S-20°48'49"-W, 86.73'(feet) to a point from which an iron bar set for reference bears, S-52°21'27"-W, 10.00'(feet);
- 8) S-37°38'33"-E, 69.81'(feet) to a point from which an iron bar set for reference bears, S-71°59'05"-W, 10.00'(feet);
- 9) S-18°00'55"-E, 26.68'(feet) to a point from which an iron bar set for reference bears, N-86°31'57"-W, 10.00'(feet);
- 10) S-3°28'03"-W, 62.61'(feet) to a point at the Northeast corner of aforementioned James P. Wolf, IV, 1.358 acre tract;

thence with the North line of said Wolf's 1.358 acre tract, N-88°59'42"-W, 181.54'(feet) to a Mag Nail found at grade on the centerline of aforementioned State Route 368, passing for reference an iron bar set at 24.50'(feet) and also passing for reference an iron bar set at 152.48'(feet) and also passing for reference the right-of-way line of State Route 368 at 158.91'(feet);

thence with the centerline of State Route 368 and a Curve to the left having a Radius of 409.11'(feet), an a Delta Angle of 2°10'20", an Arc Distance of 15.51'(feet) to a railroad spike found at 0.1'(foot) below grade, the Chord of which bears, S-6°00'02"-W, 15.51'(feet);

thence continuing with the centerline of State Route 368, S-4°56'00"-W, 310.43'(feet) to the place of beginning;


Excepting therefrom a 0.063 acre tract, conveyed as a 0.060 acre tract to the Logan County Board of County Commissioners by Deed recorded in Official Record 74, Page 877 of the Logan County Records.

Containing after said exception a total of 25.519 acres, 1.900 acres of which is with in the road right-of-way, approximately 16.957 acres of which is a part of Virginia Military Survey 12276, and approximately 8.562 acres of which is a part of Virginia Military Survey 9968, but being subject to the rights of all legal highways and all easements of record.

Being a part of an original 91 acre tract conveyed to The Third National Bank and Trust Company, Trustees for UMA Clark Wolf, by Deed recorded in Deed Volume 311, Page 200 of the Logan County Deed Records.

The foregoing description prepared by and in accordance with a survey by William D. Edwards, Professional Surveyor No. 7574, December 5, 2000. All iron bars set are 5/8" x 30" iron re-bar with a yellow plastic cap stamped "EDWARDS PS 4792 PS 7574". The basis of bearings for the herein described tract is the centerline of State Route 368 as shown on Plan L-28 (N-4°56'00"-E).

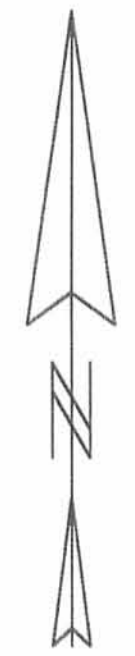



William D. Edwards
Professional Surveyor No. 7574

INDEXED ON MAP
3060

-3D-3

PLAT SHOWING SURVEY OF A 25.519 AC. TRACT OUT OF THE THIRD NATIONAL BANK AND TRUSTS COMPANY TRUSTEES FOR UMA CLARK WOLF'S ORIGINAL 91 AC. TRACT BEING SITUATE IN STOKES TOWNSHIP, LOGAN COUNTY, OHIO AND BEING A PART OF VIRGINIA MILITARY SURVEYS 9968 & 12276



SCALE: 1" = 100'
DATE: DECEMBER 5, 2000

Curve	Delta Angle	Radius	Arc	Chord Bearing
1	4°12'22"	381.30	28.30	S 18°14'05"W, 28.10'
2	1°14'06"	190.98	38.89	S 40°57'09"E, 38.83'
3	104°28'11"	114.66	209.88	S 5°29'31"W, 181.13'
4	2°10'20"	408.11	15.51	S 6°00'02"W, 15.51'

25.519 AC.
(1,900 AC. RAW)
(23,619 AC. NET)

- NOTE:
1. BEARINGS ARE BASED ON THE CENTERLINE OF STATE ROUTE 368 AS SHOWN ON PLAN L-28 (N-4°56'00"E)
 2. CENTERLINE AND OFFSET STATIONS OF STATE ROUTE 368 ARE SHOWN PER ROAD PLAN L-28.
 3. REFERENCES USED: DEED OF SUBJECT PREMISES, DEEDS OF ADJOINING PARCELS, PLATS OF SURVEYS IN THE VICINITY, COUNTY TAX AND AERIAL MAPS.

- LEGEND
- △ = RAILROAD SPIKE... FOUND
 - = IRON BAR... FOUND
 - ◇ = IRON PIPE... FOUND
 - = MAG NAIL... FOUND
 - = CONCRETE MONUMENT... FOUND
 - = MAG NAIL... SET at grade
 - = 5/8"x30" IRON RE-BAR WITH YELLOW PLASTIC CAP STAMPED "EDWARDS PS 4792 PS 7574"... SET at grade



SURVEYED BY: *William D. Edwards*
WILLIAM D. EDWARDS
PROFESSIONAL SURVEYOR No. 7574
110 SOUTH MAIN STREET
URBANA, OHIO 43078
(937)553-6508

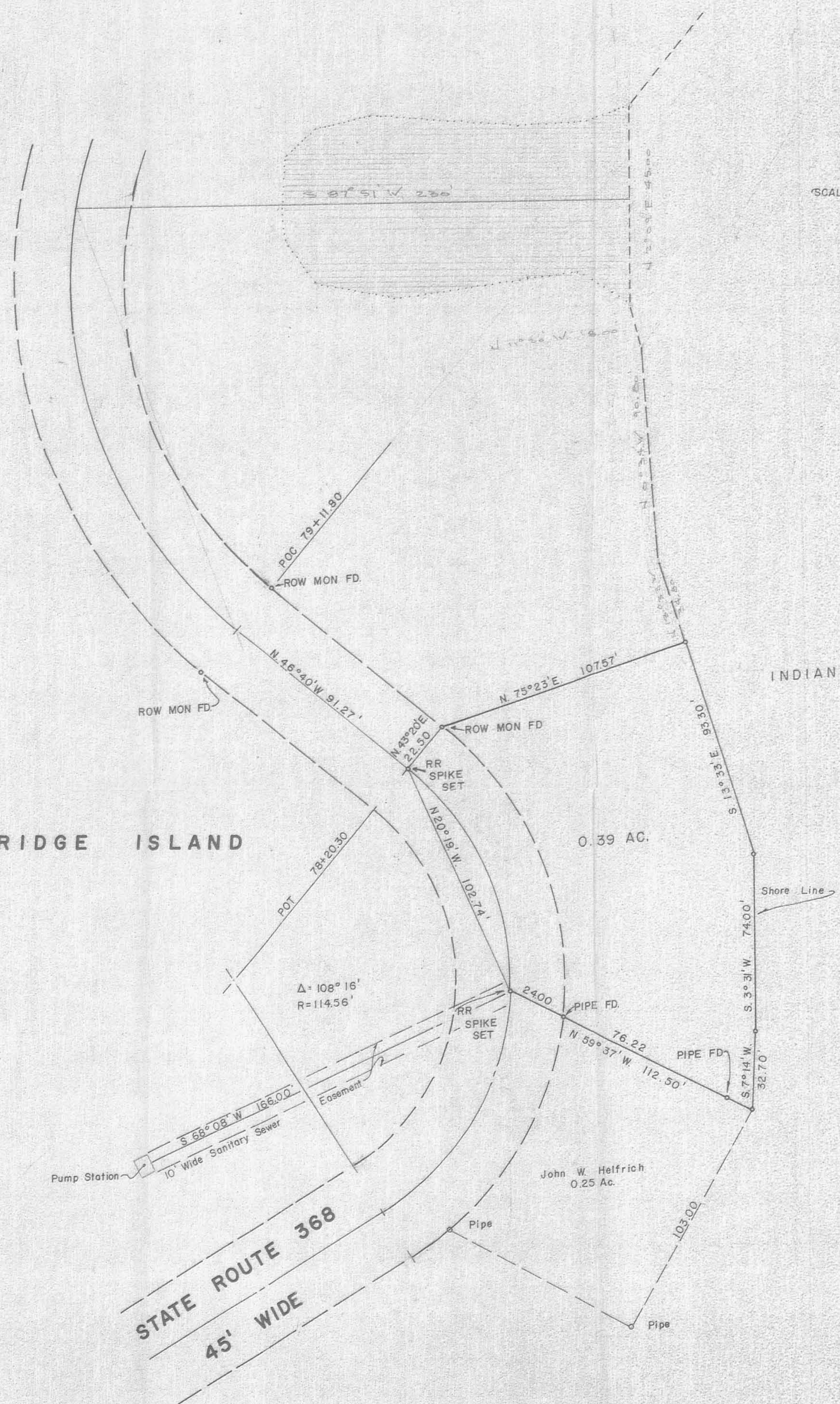
INDEXED ON MAP
SW



SCALE 1" = 30'

LAKERIDGE ISLAND

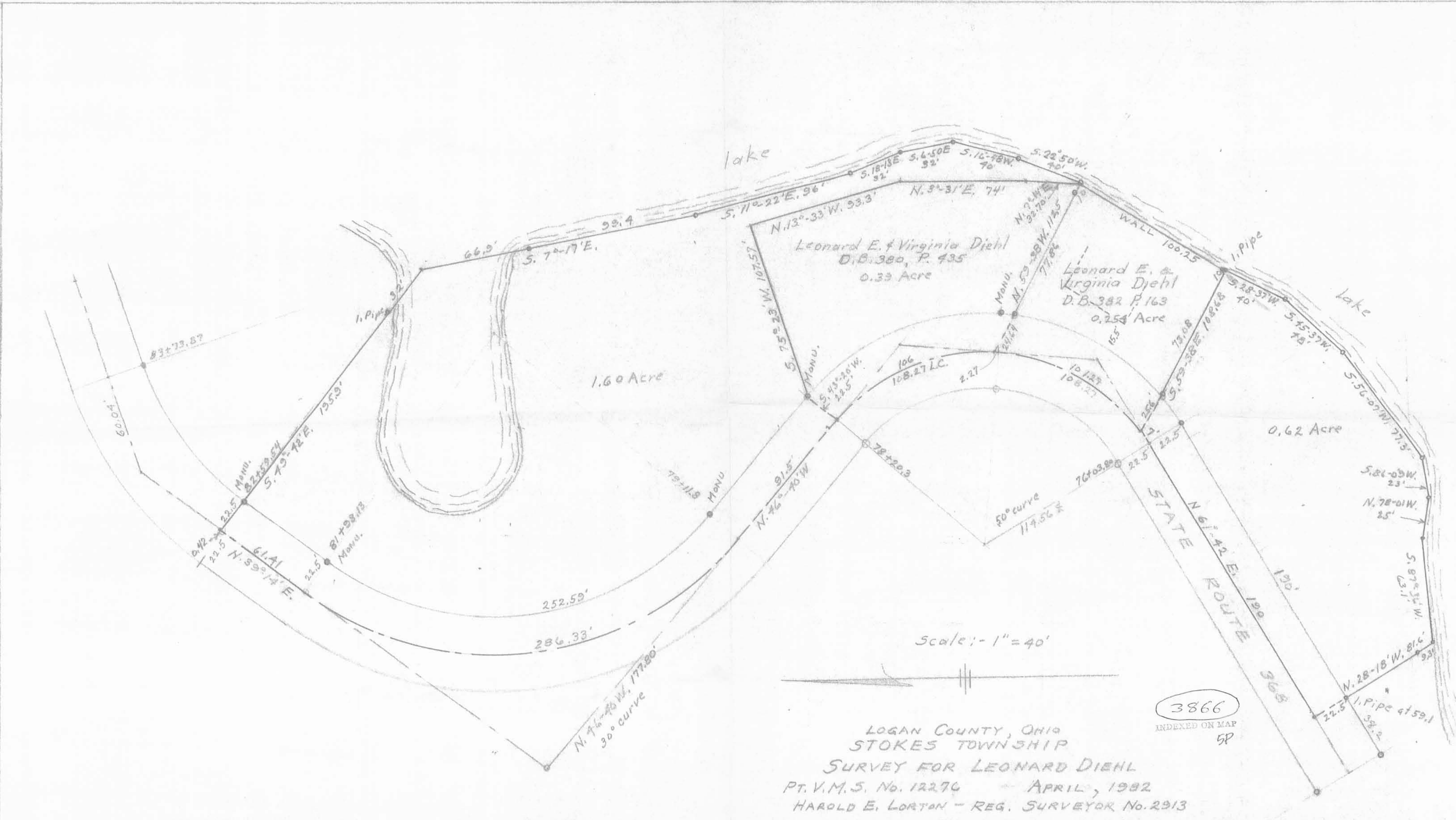
INDIAN LAKE



3866 4P
DRAWN BY MAP

WOLF SURVEY 1978
VMS 12276 STOKES TWP. LOGAN CO.

LARRY BLOSSER SIT 1199
CHK'D BY *Cecil E. Mengerink*
CECIL E. MENERINK PS 3151



lake

lake

Leonard E. & Virginia Diehl
D.B. 380, P. 435
0.33 Acre

Leonard E. & Virginia Diehl
D.B. 382 P. 163
0.254 Acre

1.60 Acre

0.62 Acre

STATE ROUTE
N 61-42 E. 190
130'
190
365

Scale: 1" = 40'

3866
INDEXED ON MAP
5P

LOGAN COUNTY, OHIO
STOKES TOWNSHIP
SURVEY FOR LEONARD DIEHL
PT. V.M.S. No. 12276 - APRIL, 1982
HAROLD E. LORTON - REG. SURVEYOR No. 2913

WOLF DESCRIPTION
LAKERIDGE - V.M.S. 12276
STOKES - WASHINGTON TOWNSHIPS

June 4, 1973

The following described real estate situated in Stokes and Washington Townships, Logan County, Ohio and being part of Virginia Military Survey 12276 and more particularly described as follows:

Beginning at an iron pipe at the northeast corner of Lot 20 of Wolfs' First Subdivision as shown in Logan County Recorder's Plat Book C, Volume 3, Page 90, said pipe also being the southeast corner of J. H. Holloways' 0.06 acre tract; thence with said Holloways' east line N. 35°24' W. 15.0 feet to an iron bar in the south line of Jane C. Hagedorn's 1.03 acre tract; thence with said south line N. 57°51' E. 50.1 feet to an iron bar at the southeast corner of said 1.03 acre tract; thence with the east line of said tract N. 21°40' E. 274.3 feet, passing the northeast corner of said 1.03 acre tract at 213.3 feet; thence S. 57°51' W. 244 feet to the shore line of Indian Lake; thence with said shoreline northwesterly 1400 feet; thence continuing with said shore line southeasterly 800 feet; thence with said shoreline S. 24°50' E. 138.5 feet; thence S. 75°14' E. 661.7 feet to an iron pin in the center of State Route No. 638, said pin being Sta. 67+70.81 as shown on Logan County Engineer's Plan L-28; thence with said centerline S. 4°56' W. 443.32 feet to P.T. Sta. 63+27.42; thence with said centerline, being a curve to the right having a central angle of 7°34' and a radius of 2864.78 feet, a chord bearing S. 1°07' W. 378.17 feet to P.C. Sta. 59+49.09; thence with said centerline S. 2°41' E. 326.80 feet to

666-1
INDEXED ON MAP
3866

P. T. Sta. 56+22.10; thence with said centerline, being a curve to the left having a central angle of $11^{\circ}08'$ and a radius of 1145.91 feet, a chord bearing S. $2^{\circ}57'$ W. 222.50 feet to P.C. Sta. 53+99.43; thence with said centerline tangent S. $8^{\circ}26'$ W. 253.94 feet; thence with the north line of 50 foot street S. $74^{\circ}53'$ W. 95.58 feet to the P.C. of a curve to the left having a central angle of $24^{\circ}50'$ and a radius of 337.9 feet; thence with said curve, an arc distance of 146.45 feet to the P.C. of a curve to the right, having a central angle of $82^{\circ}04'$ and a radius of 144.4 feet; thence with said curve, an arc distance of 206.83 feet to the P.C. of a curve to the right, having a central angle of $49^{\circ}50'$ and a radius of 48.0 feet; thence with said curve, being the east line of said 50 foot street, an arc distance of 41.75 feet to the P.C. of a curve to the left having a central angle of $19^{\circ}50'$ and a radius of 1192.0 feet; thence with said curve, an arc distance of 412.62 feet to the P.T. of said curve; thence continuing with the east line of said 50 foot street N. $17^{\circ}52'$ W. 75.0 feet to the P.C. of a curve to the left having a central angle of $15^{\circ}03'$ and a radius of 1472.0 feet; thence with said curve, an arc distance of 386.65 feet to an iron pipe at the P.T. of said curve, said pipe also being the northeast corner of said 50 foot street; thence with the north line of said street S. $79^{\circ}29'$ W. 53.77 feet to the place of beginning.

Containing 42.0 acres more or less.



6D-2

WOLF SURVEY

Lakeridge - V.M.S. 12276

Stokes - Washington Townships

April 4, 1964

The following described real estate situated in Stokes and Washington Townships, Logan County, Ohio and being part of Virginia Military Survey 12276 and more particularly described as follows:

Beginning at an iron pipe at the northeast corner of lot 20 of Wolfs' First Subdivision as shown in Logan County Recorder's Plat Book C, Volume 3, Page 90, said pipe also being the southeast corner of J. H. Holloways' 0.06 acre tract; thence with said Holloways' east line N. 32°28' W. 15.0 feet to a stake; thence with said Holloways' north line S. 60°47' W. 143.0 feet to the shore line of Indian Lake; thence with said shore line, northwesterly 1170 feet; thence N. 86°18' E. 1479.0 feet to an iron pin in the center of State Route 368 at P.C. Sta. 69+70.81 as shown on Logan County Engineer's Plan L-28; thence with said centerline S. 4°56' W. 643.32 feet to P.T. Sta. 63+27.42; thence with said centerline, being a curve to the right having a central angle of 7°34' and a radius of 2864.78 feet, a chord bearing S. 1°07' W. 378.17 feet to P.C. Sta. 59+49.09; thence with said centerline S. 2°41' E. 326.80 feet to P.T. Sta. 56+22.10; thence with said centerline, being a curve to the left having a central

INDEXED ON MAP
3866

7D-1

angle of $11^{\circ}08'$ and a radius of 1145.91 feet, a chord bearing S. $2^{\circ}57'$ W. 222.50 feet to P.C. Sta. 53+99.43; thence with said centerline tangent S. $8^{\circ}26'$ W. 253.94 feet; thence with the north line of 50 foot private street S. $74^{\circ}53'$ W. 95.58 feet to the P.C. of a curve to the left having a central angle of $24^{\circ}50'$ and a radius of 337.9 feet; thence with said curve, an arc distance of 146.45 feet to the P.C. of a curve to the right, having a central angle of $82^{\circ}04'$ and a radius of 144.4 feet; thence with said curve, an arc distance of 206.83 feet to the P.C. of a curve to the right, having a central angle of $49^{\circ}50'$ and a radius of 48.0 feet; thence with said curve, being the east line of said 50 foot street, an arc distance of 41.75 feet to the P.C. of a curve to the left having a central angle of $19^{\circ}50'$ and a radius of 1192.0 feet; thence with said curve, an arc distance of 412.62 feet to the P.T. of said curve; thence continuing with the east line of said 50 foot street N. $17^{\circ}52'$ W. 75.0 feet to the P.C. of a curve to the left having a central angle of $15^{\circ}03'$ and a radius of 1472.0 feet; thence with said curve, an arc distance of 386.65 feet to an iron pipe at the P.T. of said curve, said pipe also being the northeast corner of said 50 foot street; thence with the north line of said street S. $79^{\circ}29'$ W. 53.77 feet to the place of beginning.

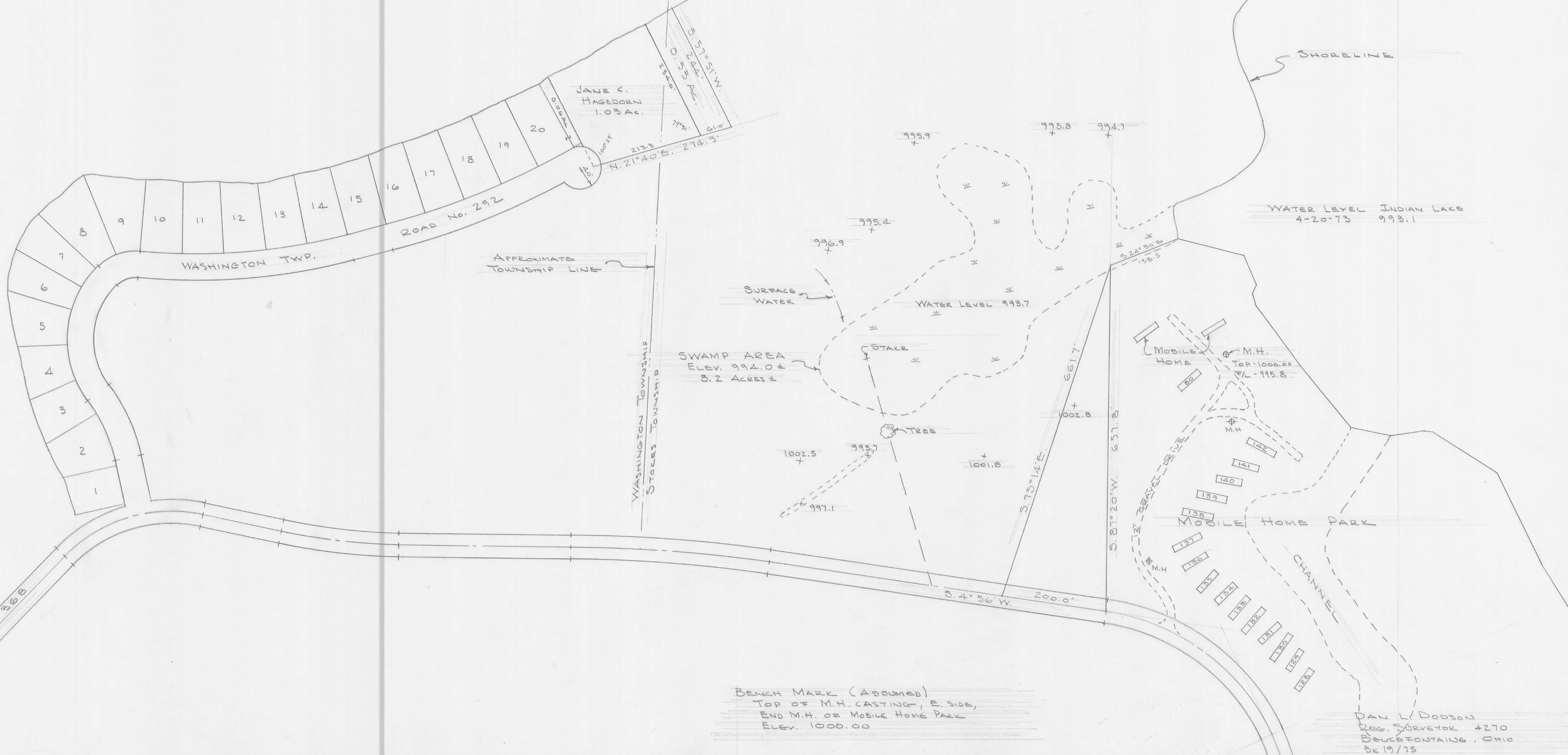
Containing 39.60 acres more or less.



INDIAN LAKE



WOLF SURVEY
LAKERIDGE ISLAND
V.M.S. 12276
STOKES & WASHINGTON TWP'S.
LOGAN COUNTY, OHIO
APRIL 20, 1973
SCALE 1" = 100'



NORTH

INDIAN

LAKE

WOLF SURVEY
V.M.S. 12276
STOLPS & WASHINGTON TWR'S.
LOGAN COUNTY, OHIO
APRIL, 1964
SCALE 1"=100'

REFERENCE:
Wolf's First Subdivision - Plat Bk. C, Vol. 3, Pg. 90
S.R. 368 - Logan Co. Engineers Plan L-28
0.06 Ac. Tract - Wolf to J.H. Holloway
Deed Vol. 225, Pg. 152

Dan L. Dodson
Dan L. Dodson
Reg. Surveyor 4270
Bellevue, Ohio
BLS Pg. 46-48



INDIAN LAKE

SHORE LINE 2

CENTERLINE 10' DRIVE 2

CENTERLINE 10' STONE DRIVE 2

PROP. M.H.

PROP. SEWER LINE

PROP. LIFT STA.

BASE LINE 2

S. R. No 368

45'

STA. 79+11.8

STA. 69+10.81

WOLF TOPO
V.M.S. 12276
STOKES TWP. LOGAN CO. OHIO
FEB. 11, 1967
SCALE 1"=50'

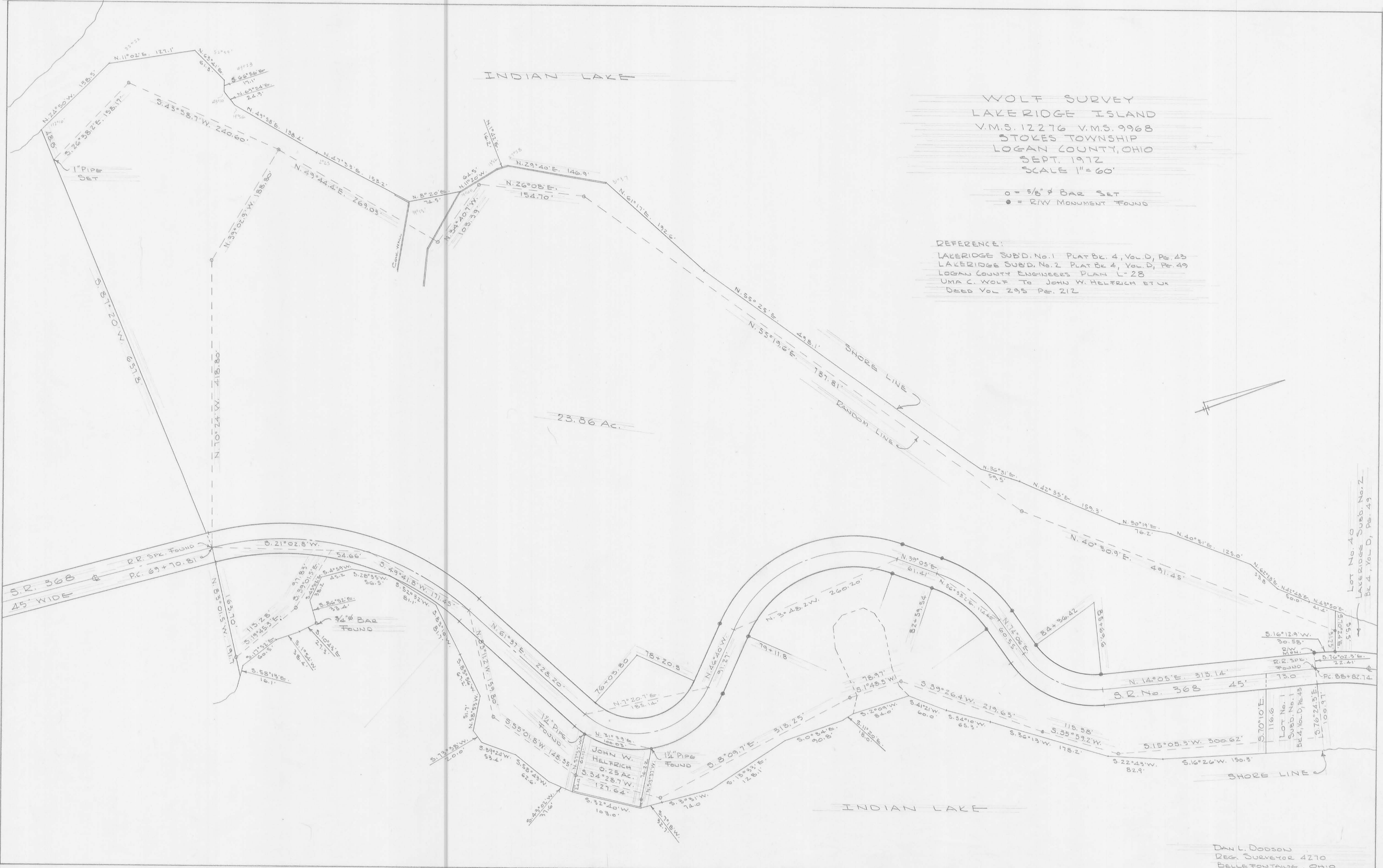
Dan L. Dodson
DAN L. DODSON
REG. SURVEYOR 4270
BELLERONTAINE, OHIO

INDIAN LAKE

WOLF SURVEY
LAKE RIDGE ISLAND
V.M.S. 12276 V.M.S. 9968
STOKES TOWNSHIP
LOGAN COUNTY, OHIO
SEPT. 1912
SCALE 1" = 60'

○ = 5/8" ♂ BAR SET
● = R/W MONUMENT FOUND

REFERENCE:
LAKE RIDGE SUBD. No. 1 PLAT BK. 4, VOL. D, PG. 43
LAKE RIDGE SUBD. No. 2 PLAT BK. 4, VOL. D, PG. 49
LOGAN COUNTY ENGINEERS PLAN L-28
UMA C. WOLF TO JOHN W. HELFRICH ET UX
DEED VOL. 295 PG. 212



23.86 Ac.

SHORE LINE

RANDOM LINE



JOHN W. HELFRICH
0.25 AC.
127.64'

DAN L. DOOSON
REG. SURVEYOR 4270
BELLEFONTAINE, OHIO