




LOT 649-650  
 CHIPPEWA No. 1  
 STOKES TWP. - LOGAN CO.  
 JUNE 9, 1965  
 SCALE 1" = 20'

4012 IP

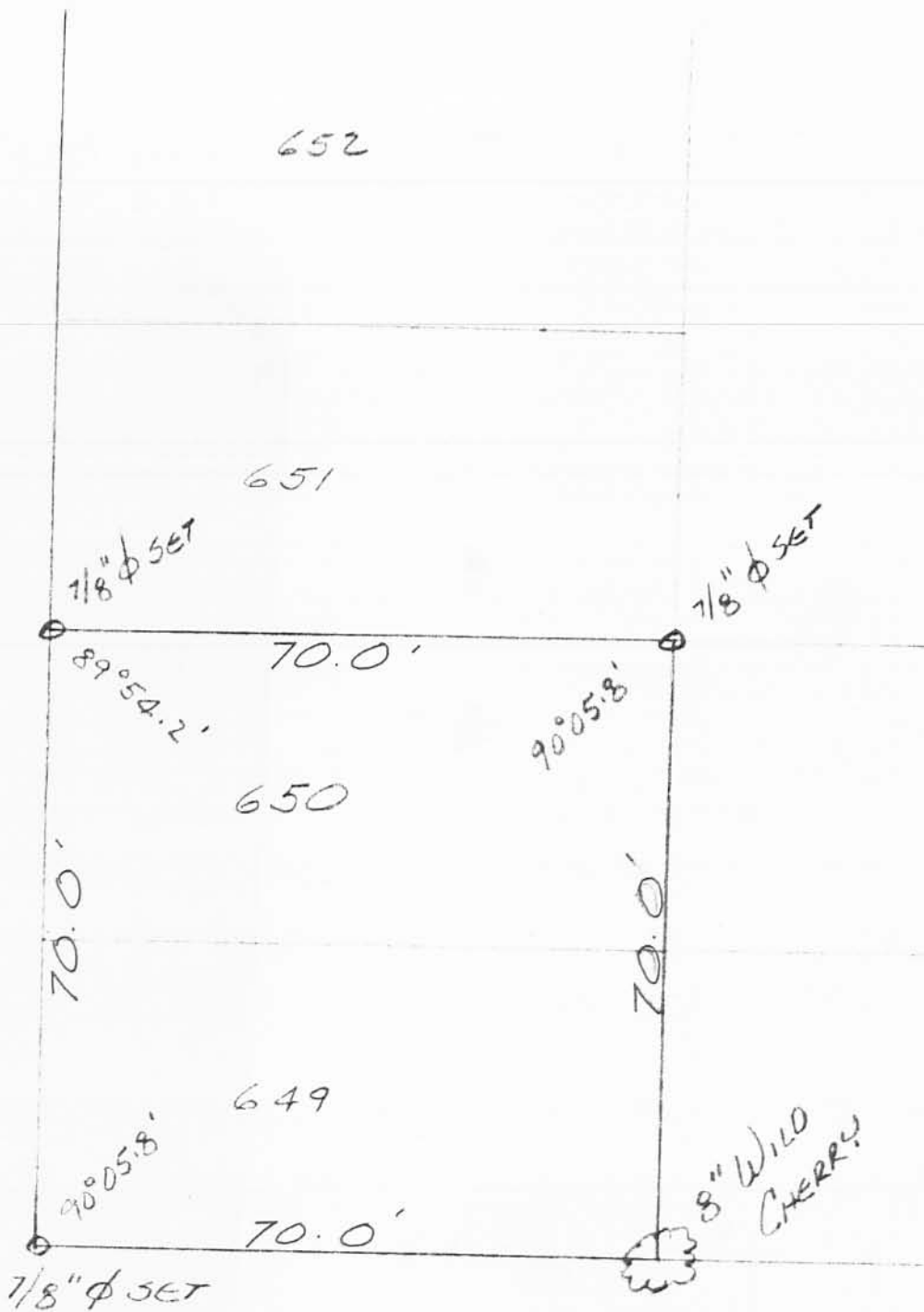
- A = 1/2" # Bar Set
- B = 2" x 2" x 18" Hub Set
- C = 8" Wild Cherry
- D = 3/4" Pipe Found
- E = P-K Nail Set on @

On Plat Book  
 12-12-64  
 DE.

INDEXED ON MAP  
  
 Dan L. Dodson  
 Reg. Surveyor 4270  
 Bellefontaine, Ohio



TECUMSEH PATH (35')



0  
3/4" PIPE FD

EAGLE PATH (35')

JULY 18, 1973  
LOTS 649 & 650  
CHIPPEWA PARK No. 1

4012  
2P

LESLIE H. GOESLIN  
REG. SURVEYOR 5248

Lot 649-650

(HIPPEWA No. 1

- A = 3/4" Pipe Found
- B = "T" Iron Found
- C = 1/2" Pipe Found
- D = Point 175.18 from C
- E = Nail found 192.30' from A on line A-D

P-K nails set on E

3/4"  
Pipe  
Found

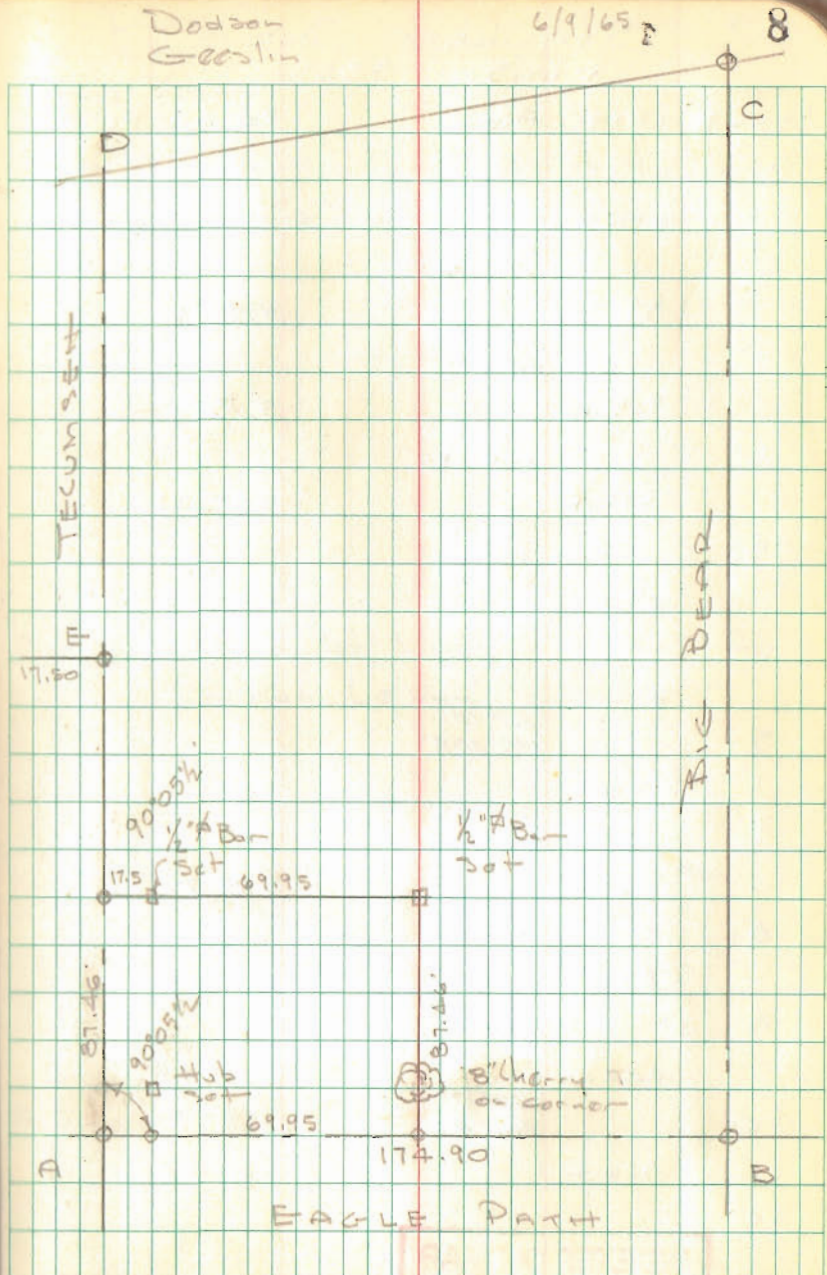
69.96  
17.50  
87.46

INDEXED ON MAP  
4012

Dodson  
Geeslin

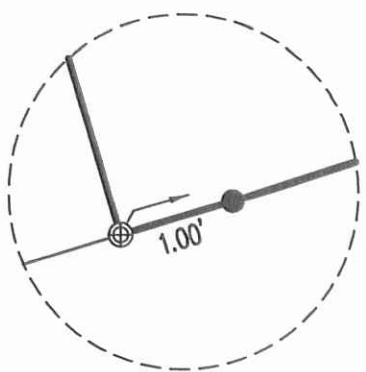
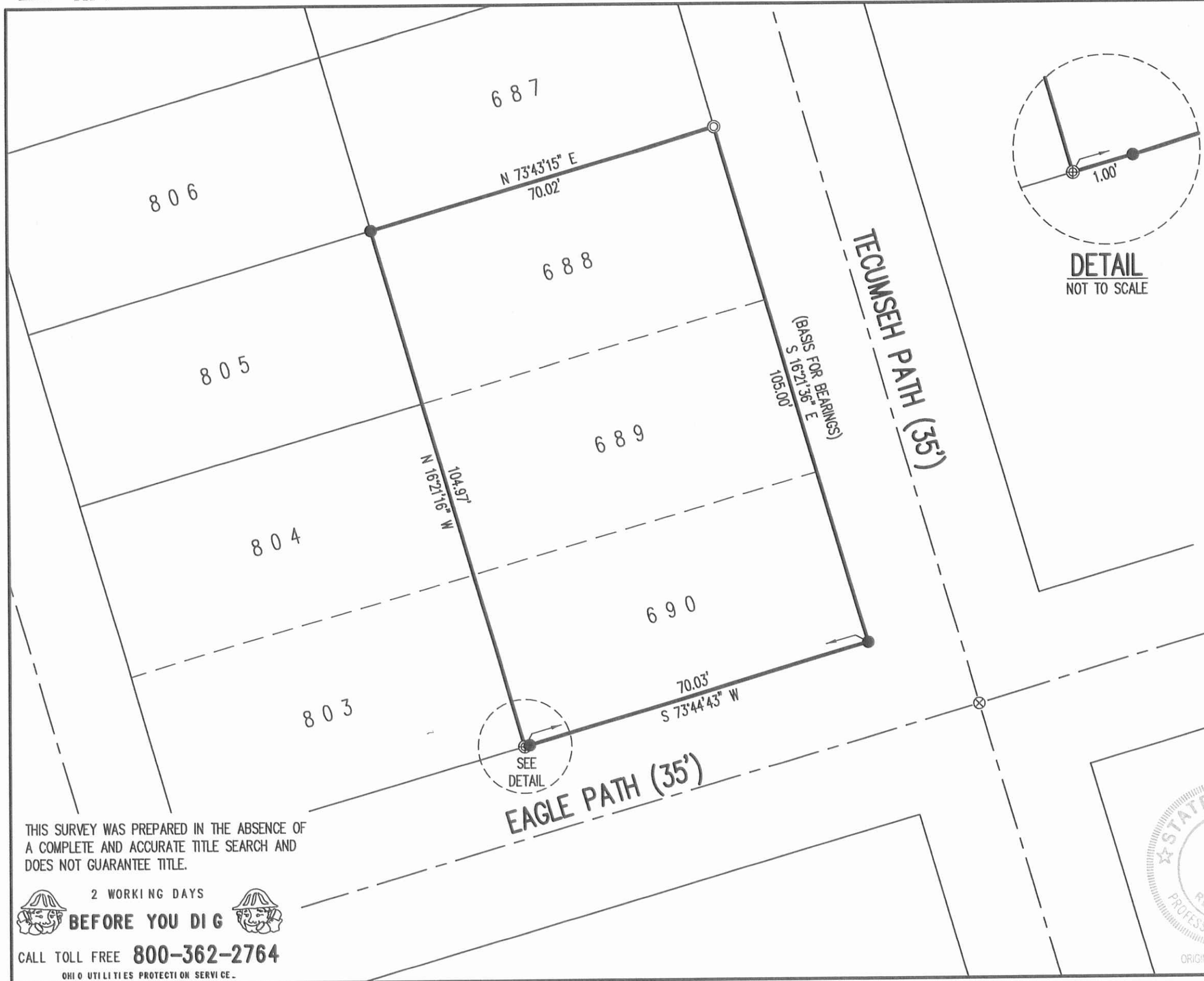
6/9/65

8

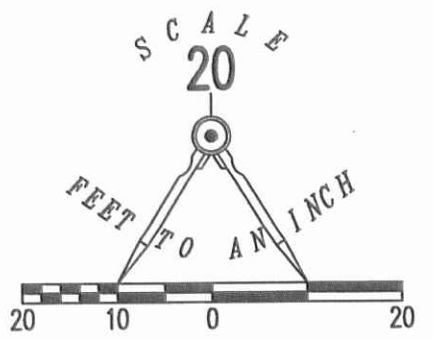


10-14-16

**APPROVED**



**DETAIL**  
NOT TO SCALE



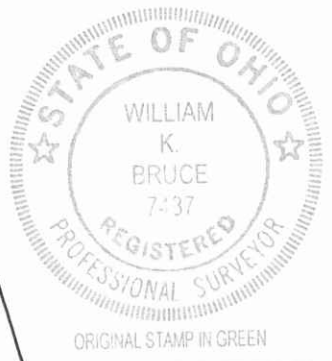
LEGEND:

- ⊗ RAILROAD SPIKE FOUND
- ⊙ 1 INCH IRON PIPE FOUND
- ⊕ CONCRETE FENCE POST FOUND
- 5/8 INCH IRON ROD SET WITH PLASTIC I.D. CAP STAMPED "LSM 7437"

**RETRACEMENT SURVEY OF  
LOTS 688 THROUGH 690  
CHIPPEWA PARK NO. 1  
PLAT CABINET A, SLIDE 221  
VIRGINIA MILITARY SURVEY 12276  
STOKES TOWNSHIP  
LOGAN COUNTY, OHIO**

SURVEYED BY:

*William K. Bruce*  
 WILLIAM K. BRUCE  
 PROFESSIONAL SURVEYOR 7437  
 OCTOBER 3, 2016



COPYRIGHT 2016 BY:  
**LEE SURVEYING & MAPPING CO., INC.**  
 117 North Madriver Street  
 BELLEFONTAINE, OHIO 43311  
 (937) 593-7335  
 WWW.LSMINC.US  
 surveys@lsminc.us  
 KSS D0916 61730916 L-6173-3

THIS SURVEY WAS PREPARED IN THE ABSENCE OF  
 A COMPLETE AND ACCURATE TITLE SEARCH AND  
 DOES NOT GUARANTEE TITLE.

2 WORKING DAYS  
**BEFORE YOU DIG**  
 CALL TOLL FREE **800-362-2764**  
 OHIO UTILITIES PROTECTION SERVICE

INDEXED ON MAP  
 4012.3P