

Approved this 26th day of September 1962.

E. K. Lane
Logan County Engineer

The annexed plat is hereby approved and accepted by the Board of County Commissioners at a regular meeting this 1 day of October 1962.

S. Ernest Howlton
Forster A. Cole
William A. Fox
Logan County Commissioners

The within lots transferred this 1st day Oct. 1962.

Charles H. Chamberlain
Logan County Auditor

165773

Received for record at 10:55 o'clock A M, on this 5th day of October 1962.
Recorded in Plat Book 4, Volume D, Page 91.

Rosanna L. Strayer
Logan County Recorder

KNOW ALL MEN BY THESE PRESENTS:
That Warren L. Edwards and Jean Clair Edwards, proprietors of the land indicated on the accompanying plat, have authorized the platting thereof and do hereby dedicate the drive to the lot owners for their use. That portion of County Highway 286 bounded by said plat is hereby dedicated to the public use forever.

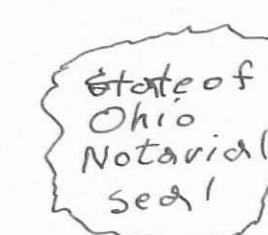
James R. Joelle
Daniel C. Millett
Witness

Warren L. Edwards
Jean Clair Edwards

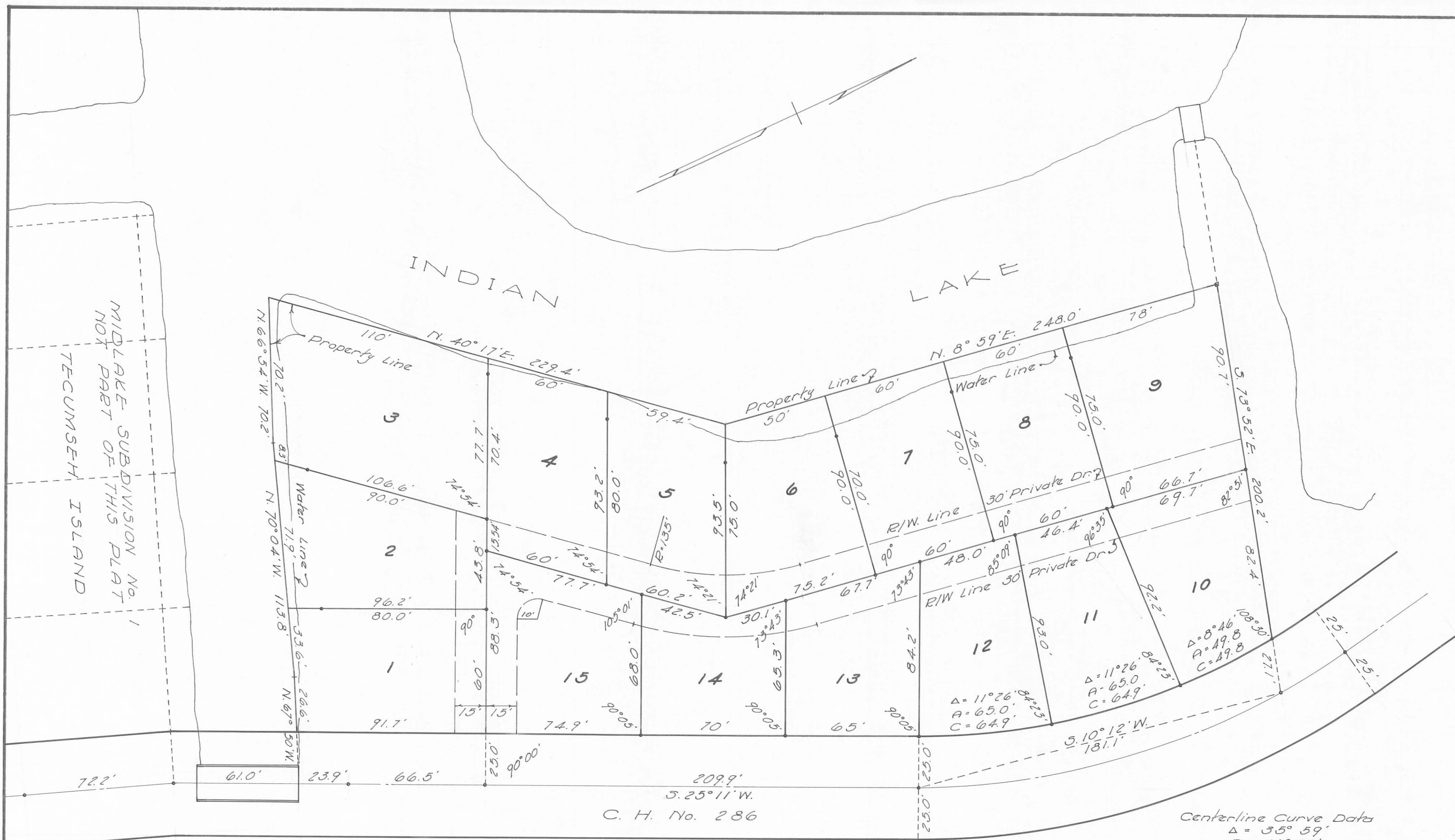
STATE OF OHIO 55
COUNTY OF LOGAN

Be it remembered that on this the 5th day of October in the year of our Lord One Thousand Nine Hundred and Sixtytwo, before me, a notary public in and for said County, personally came Warren L. Edwards and Jean Clair Edwards, grantors in the foregoing dedication, who acknowledged the signing thereof to be their free and voluntary act and deed.

James R. Joelle
Notary Public
July 11, 1963
My Commission Expires



COUNTY
4045
INDEX NO.
INDEXED ON MAP



REFERENCE:
State of Ohio, Dept. of Natural Resources
Plat-File No. 46 I-RS, 12-1.2
Deed Volume 283, page 147

The accompanying plat represents a subdivision of land in Virginia Military Survey 12276, Stokes Township, Logan County, Ohio.
The tract has an area of 1.90 acres in lots and 0.27 acres in County Highway 286, making a total of 2.17 acres.
The private drive as indicated by the dashed line is 30 feet wide.
Measurements are in feet and tenths of a foot.
• = Iron Pin
□ = 2" Hub

Don L. Dodson
Don L. Dodson
Registered Surveyor 4270
Bellefontaine, Ohio
August, 1962



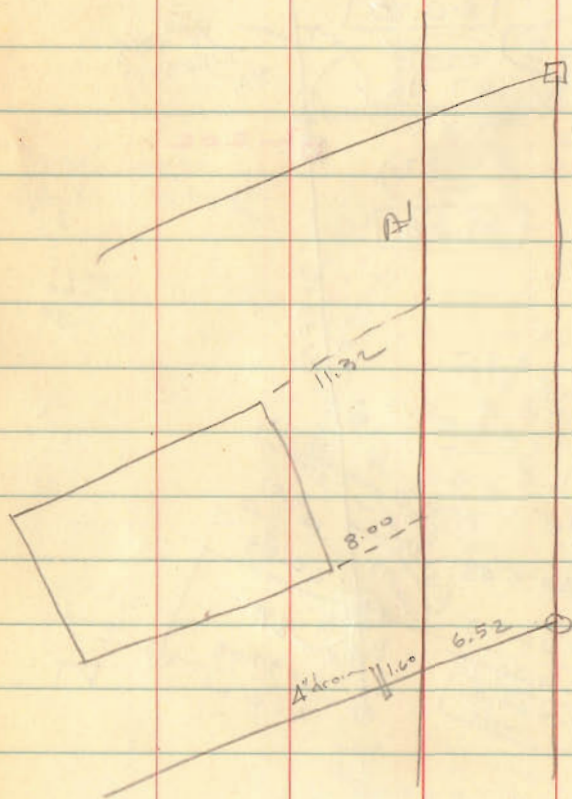
SCALE 1" = 30'
0 20 40 60 80 100

**EDWARDS SUBDIVISION
CRANE TOWN ISLAND
V.M.S. 12276 - STOKES TOWNSHIP
LOGAN COUNTY, OHIO
1962**

1.0417
15
52085
10417
15,6255

1.0066
15
52330
10066
15,0990

1.0036
15
50180
10036
15,0540



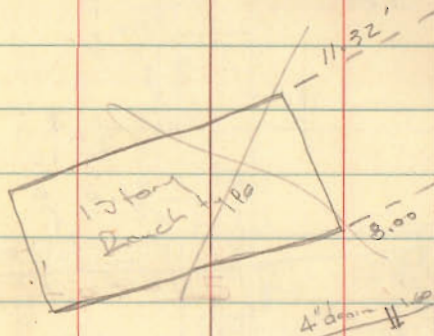
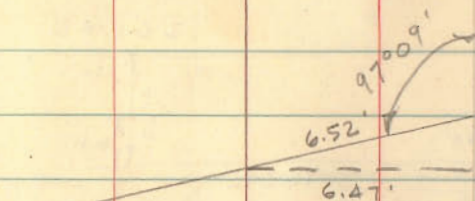
INDEXED ON MAP
4045

1/22/66

AA

7' Strip @ E line
Lot 15 & 9

179 80
97 09
82 51



Line from Schuler Road

