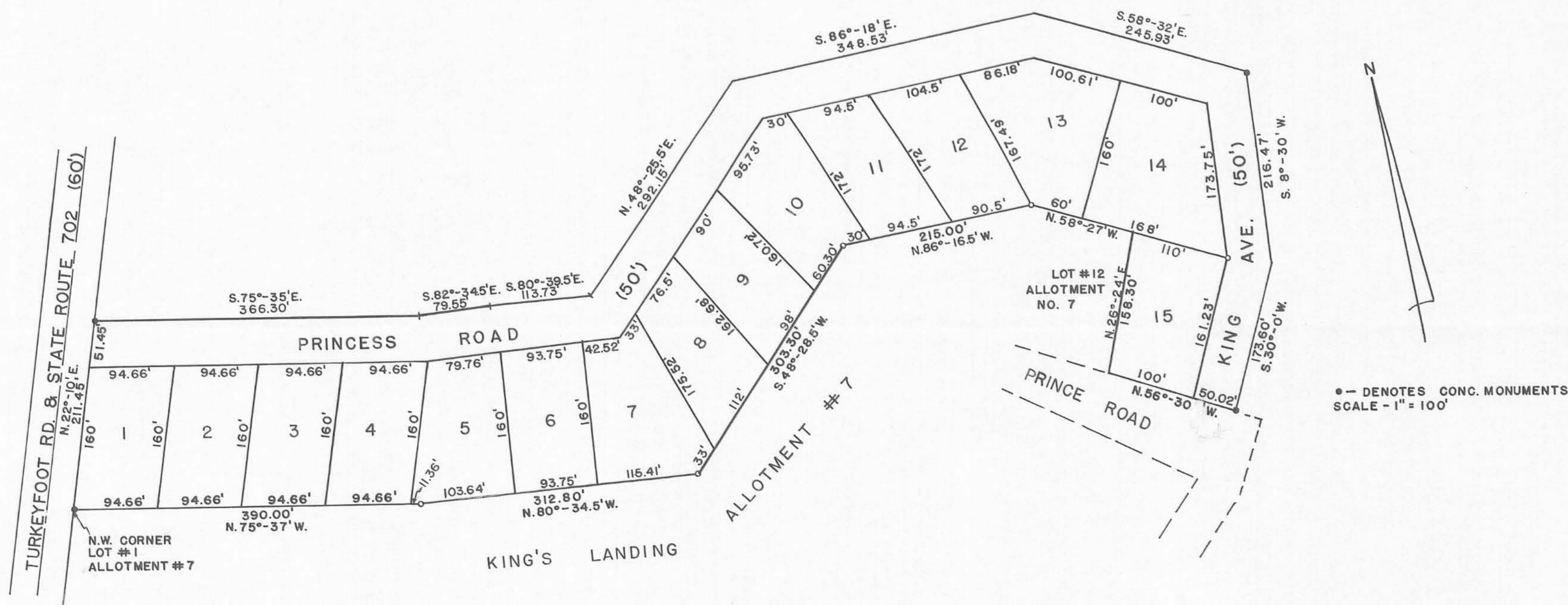


KING'S LANDING ALLOTMENT
NUMBER 8
PART OF V.M.S. 12277
STOKES TOWNSHIP
LOGAN COUNTY, OHIO



SURVEYOR'S CERTIFICATE

I HEREBY CERTIFY THAT IN MAY 1967, I SURVEYED THE FOLLOWING DESCRIBED LAND IN V.M.S. 12277, STOKES TOWNSHIP, LOGAN COUNTY, OHIO, AND THAT IRON PINS WERE PLACED AT ALL LOT CORNERS AND CONC. MONUMENTS WERE PLACED WHERE SHOWN.

BEGINNING AT THE N.E. CORNER OF LOT #1 IN KING'S LANDING ALLOTMENT #7, THENCE N.22°-10'E. ALONG THE EAST RIGHT OF WAY LINE OF STATE ROUTE 702 FOR A DISTANCE OF 211.45 FEET, THENCE S.75°-35'E. FOR A DISTANCE OF 366.30 FEET, THENCE S.82°-34.5'E. FOR A DISTANCE OF 79.55 FEET, THENCE S.80°-39.5'E. FOR A DISTANCE OF 113.73 FEET, THENCE N.48°-25.5'E. FOR A DISTANCE OF 292.15 FEET, THENCE S.86°-18'E. FOR A DISTANCE OF 348.53 FEET, THENCE S.58°-32'E. FOR A DISTANCE OF 245.93 FEET, THENCE S.8°-30'W. FOR A DISTANCE OF 216.47 FEET, THENCE S.30°-0'W. FOR A DISTANCE OF 173.60 FEET, THENCE N.56°-30'W. FOR A DISTANCE OF 150.02 FEET TO THE S.E. CORNER OF LOT #12 OF KING'S LANDING ALLOTMENT #7, THENCE ALONG THE FOLLOWING SIX COURSES AND BEARINGS ALONG THE NORTHERLY LINE OF KING'S LANDING ALLOTMENT #7, N.26°-14'E. FOR A DISTANCE OF 158.30 FEET, THENCE N.58°-27'W. FOR A DISTANCE OF 117.75 FEET, THENCE N.86°-16.5'W. FOR A DISTANCE OF 215.00 FEET, THENCE S.48°-28.5'W. FOR A DISTANCE OF 303.30 FEET, THENCE N.80°-34.5'W. FOR A DISTANCE OF 312.80 FEET, THENCE N.75°-37'W. FOR A DISTANCE OF 390.00 FEET TO THE PLACE OF BEGINNING.

CONTAINING IN ALL 7.593 ACRES.

Thomas L. Sheldon
THOMAS L. SHELDON
REG. SURVEYOR #4620

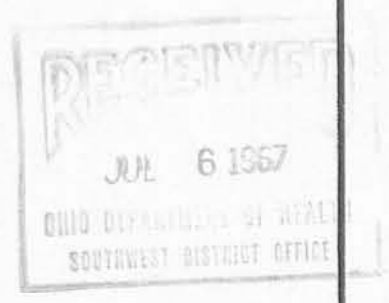
• - DENOTES CONC. MONUMENTS
SCALE - 1" = 100'

DEDICATION

BEING THE SOLE OWNERS OF THE ABOVE DESCRIBED PREMISES, WE HEREBY DEDICATE THE STREETS AND UTILITY EASEMENTS AS SHOWN, TO THE PUBLIC FOR THEIR USE FOREVER. SIGNED THIS 24th DAY OF July, 1967.

OWNER: *Lewis B. King*
Cecilia M. King

WITNESS: *Daniel E. Hillert*
Daniel E. Hillert



FILED FOR TRANSFER THIS 24th DAY OF July 1967, AT 9:30 O'CLOCK A.M. IN THE OFFICE OF THE LOGAN COUNTY AUDITOR.

APPROVAL COUNTY COMMISSIONERS

187066A

Chas H. Chamberlain
LOGAN COUNTY AUDITOR

NO. 187066A
FILED FOR RECORD THIS 24th DAY OF July 1967, AT 9:30 O'CLOCK A.M. IN THE OFFICE OF THE LOGAN COUNTY RECORDER, AND RECORDED IN PLAT BOOK 6-F PAGE 19.
FEE 8.50

Ruth Pappas
LOGAN COUNTY RECORDER

Don Downing COUNTY COMMISSIONER
James C. Smith COUNTY COMMISSIONER
John R. Drake COUNTY COMMISSIONER

APPROVAL COUNTY ENGINEER

Chester R. Kurtz, July 13, 1967
COUNTY ENGINEER

APPROVAL COUNTY HEALTH DEPT.

Susan R. Baker
OHIO DEPT. OF HEALTH
Supervising District Sanitarian

ACKNOWLEDGEMENT

COUNTY OF LOGAN, STATE OF OHIO

BEFORE ME, A NOTARY PUBLIC IN AND FOR SAID COUNTY AND STATE, DID PERSONALLY APPEAR THE ABOVE SIGNED OWNERS WHO ACKNOWLEDGED THE SIGNING OF THIS DOCUMENT TO BE THEIR FREE ACT AND DEED IN TESTIMONY THEREOF, I AFFIX MY HAND AND SEAL THIS 24th DAY OF July, 1967. MY COMMISSION EXPIRES FEBRUARY 25, 1969

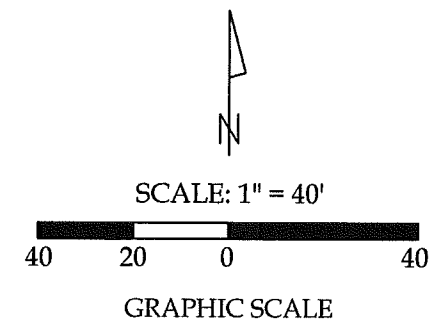
George Ansley
NOTARY PUBLIC

Note: This tracing to be filed in Logan County Engineers Office.

INDEXED ON MAP

9-5-2023
 APPROVED

Survey of Parcel #43-006-13-02-004-000 and being Lot #4 of King's Landing Allotment No. 8 (P.C. A, Slide 505) and being a part of Virginia Military Survey 12277, Stokes Township, Logan County, Ohio.
 (Deed Referenced in O.R. 457, Pg. 420)

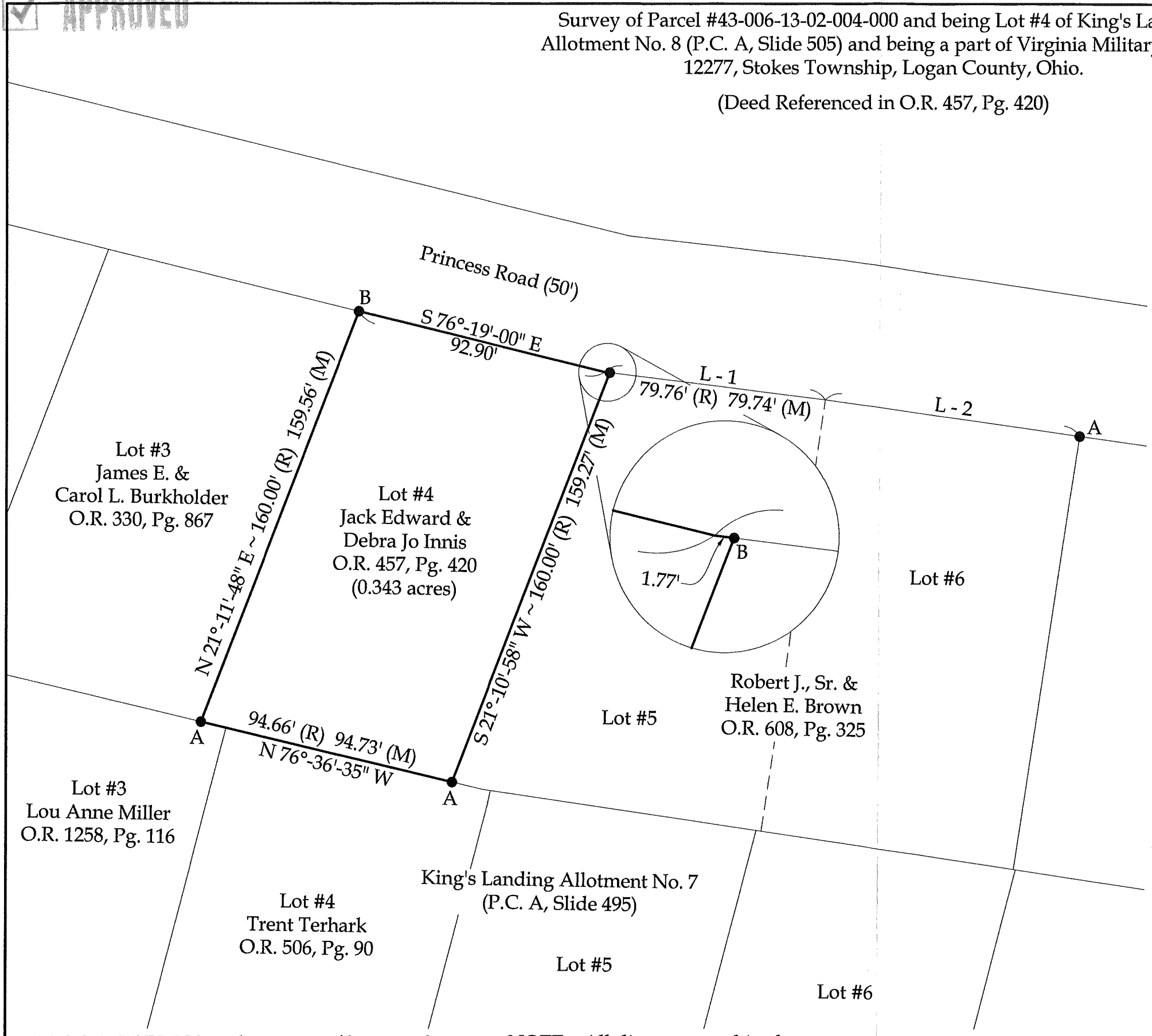


Legend

- A = Existing #5 Rebar
- B = Set # 5 Rebar

Line Data

- L - 1 = S 82°-55'-39" E ~ 81.51'
- L - 2 = S 82°-02'-15" E ~ 93.75' (R) 94.09' (M)



This plat and the accompanying legal description represent an actual boundary survey completed under my direct supervision on August 15, 2023.

KJB
 Kyle J. Binkley, P.S. #8587

CLIENT: Jack Innis			
SURVEYED BY: T.J.S./M.A.B.	DATE: 08-15-2023	DRAWN BY: K.J.B.	CHECKED BY: K.J.B.
SCALE: 1" = 40'	PAGE 1	OF 1	PAGES 1

BASIS OF BEARINGS: The system of bearings for this plat and legal description is based on the Ohio State Plane - North Coordinate System NAD 83 (2011).

NOTE: All distances on this plat are measured unless otherwise noted.

INDEXED ON MAP
 4112