

5-17-19

APPROVED

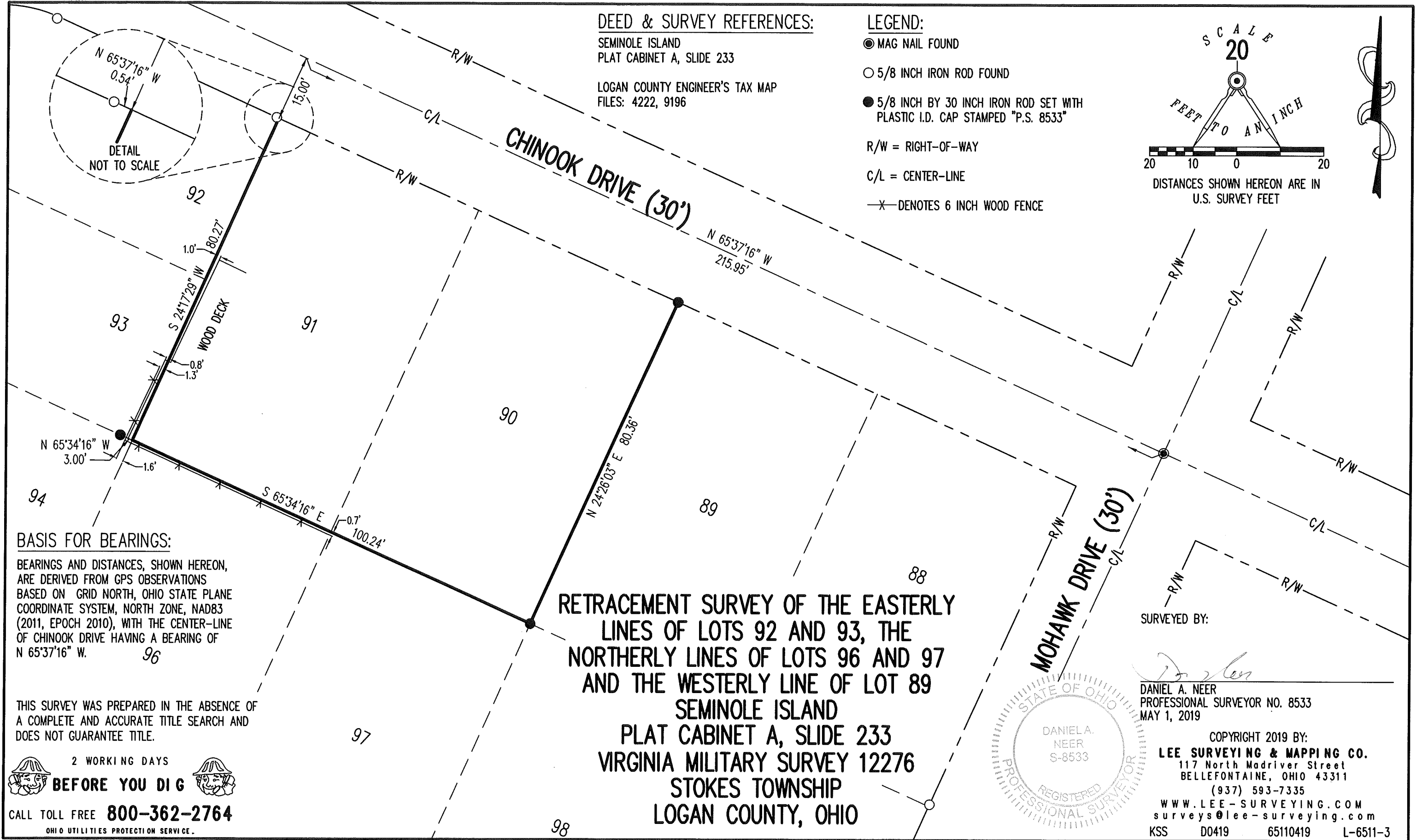
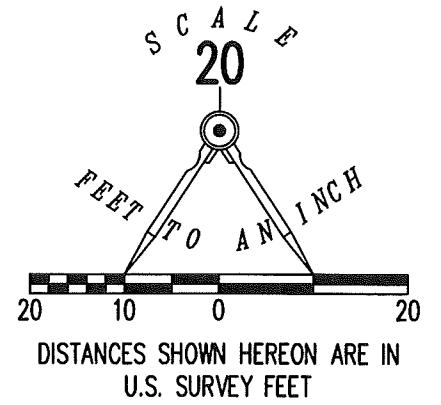
DEED & SURVEY REFERENCES:

SEMINOLE ISLAND
PLAT CABINET A, SLIDE 233

LOGAN COUNTY ENGINEER'S TAX MAP
FILES: 4222, 9196

LEGEND:

- MAG NAIL FOUND
- 5/8 INCH IRON ROD FOUND
- 5/8 INCH BY 30 INCH IRON ROD SET WITH PLASTIC I.D. CAP STAMPED "P.S. 8533"
- R/W = RIGHT-OF-WAY
- C/L = CENTER-LINE
- X— DENOTES 6 INCH WOOD FENCE



BASIS FOR BEARINGS:

BEARINGS AND DISTANCES, SHOWN HEREON, ARE DERIVED FROM GPS OBSERVATIONS BASED ON GRID NORTH, OHIO STATE PLANE COORDINATE SYSTEM, NORTH ZONE, NAD83 (2011, EPOCH 2010), WITH THE CENTER-LINE OF CHINOOK DRIVE HAVING A BEARING OF N 65°37'16" W.

THIS SURVEY WAS PREPARED IN THE ABSENCE OF A COMPLETE AND ACCURATE TITLE SEARCH AND DOES NOT GUARANTEE TITLE.

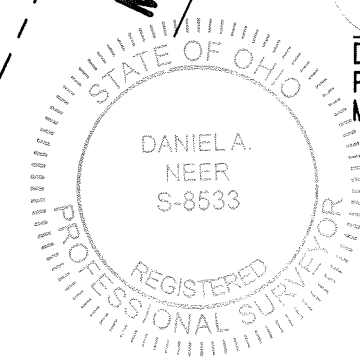
2 WORKING DAYS
BEFORE YOU DIG

CALL TOLL FREE **800-362-2764**

OHIO UTILITIES PROTECTION SERVICE.

RETRACEMENT SURVEY OF THE EASTERLY LINES OF LOTS 92 AND 93, THE NORTHERLY LINES OF LOTS 96 AND 97 AND THE WESTERLY LINE OF LOT 89
SEMINOLE ISLAND
PLAT CABINET A, SLIDE 233
VIRGINIA MILITARY SURVEY 12276
STOKES TOWNSHIP
LOGAN COUNTY, OHIO

SURVEYED BY:
Daniel A. Neer
DANIEL A. NEER
PROFESSIONAL SURVEYOR NO. 8533
MAY 1, 2019



COPYRIGHT 2019 BY:
LEE SURVEYING & MAPPING CO.
117 North Madriver Street
BELLEFONTAINE, OHIO 43311
(937) 593-7335
WWW.LEE-SURVEYING.COM
surveys@lee-surveying.com
KSS D0419 65110419 L-6511-3

INDEXED ON MAP
4222