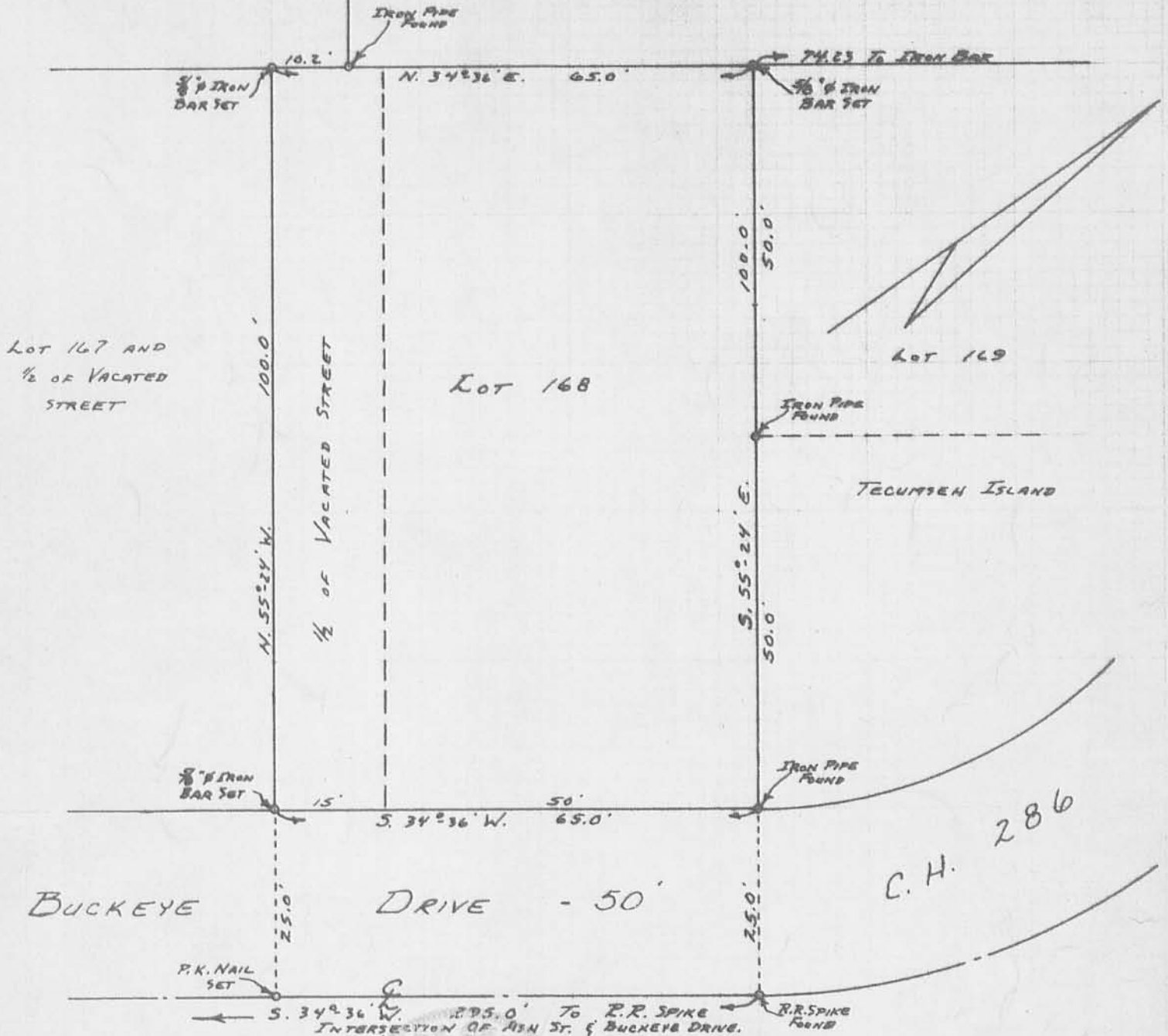


Lot 2 -
MIDLAKE SUBDIVISION
No. 1

Lot 6 - MIDLAKE SUBDIVISION No. 1



SURVEYED AND PLATTED BY:
DANIEL E. GILBERT, P.S.
REG. SUR. No. 5402
428 N. MADRIVER ST.
BELLEFONTAINE, OHIO 43311



WILLIAM EICHER SURVEY
Lot 168
TECUMSEH ISLAND
V.M.S. 12276
STOKES TOWNSHIP
LOGAN COUNTY, OHIO
JUNE 15, 1968

IP
4251

INDEXED ON MAP