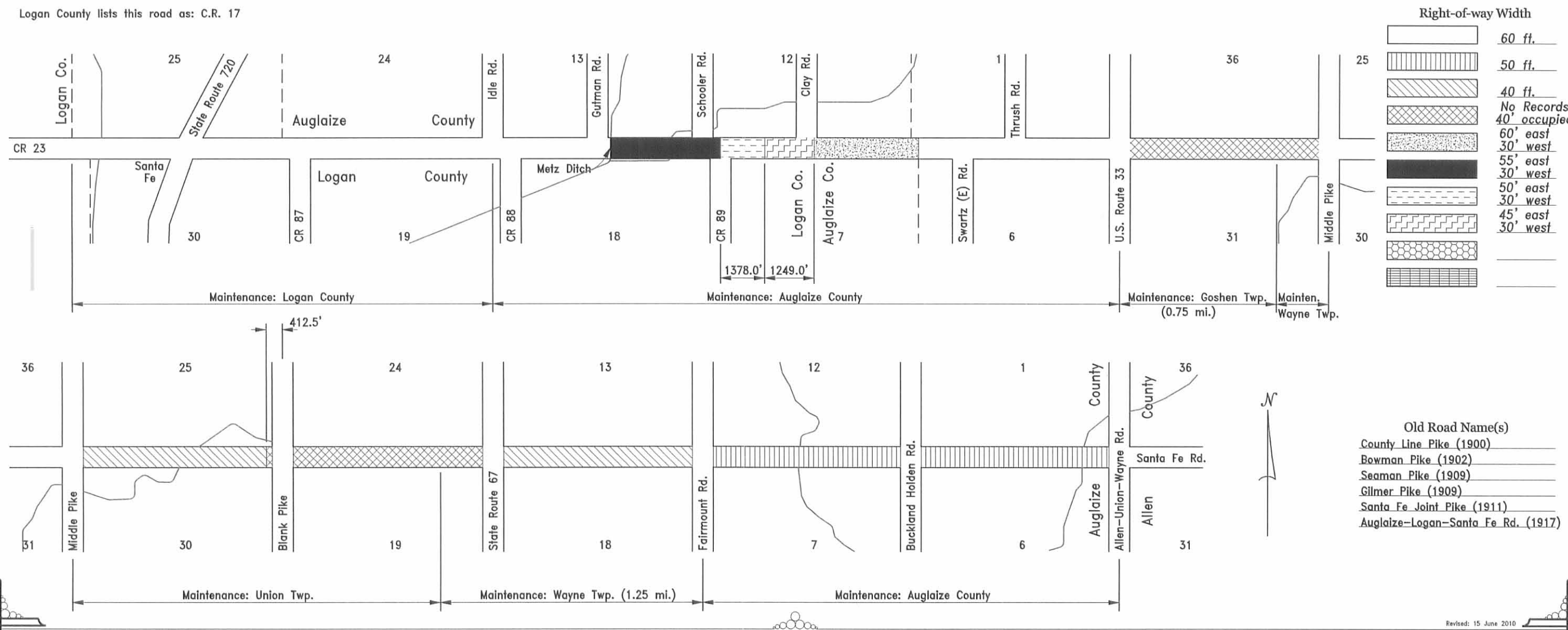


Auglaize County Road Records

Road Name: Sante Fe Line Rd.
Road Number: 251

Petitioner(s)	Year Viewed	Year Granted	Origin of Road				Road Improvements						Width	General Location of Road	
			BOCC Journal Volume	BOCC Journal Page	Road Journal Volume	Road Journal Page	BOCC Journal Volume	BOCC Journal Page	Improv. Journal Volume	Improv. Journal Page	Deed Volume Volume	Deed Volume Page			Plat Book Volume
	1842				1	72								60'	NE corner Sec. 1, T6S, R7E to SE corner Sec. 25 said Township
A. Gilmer	1851	1851	1	126	3	91								40'	SW corner Sec. 18, T5S, T8E to NW corner Sec. 6 said Township
A. Harrod	1881	1881	4	278	3A	277								40'	25 Rods South of NE corner Sec. 25, T5S, R7E to SE corner said Sec.
A. Boogher	1900	1900					9	494							(County Line Pike) Santa Fe north 8088'
W. Bowman	1908	1908					13	510	8	80				(40')	(Bowman Pike) NE corner Sec. 1, T6S, R7E to W 1/4 corner Sec. 7, T6S, R8E
E. Seaman	1909	1909					14	381	8	96				(40')	(Seaman Pike) NW corner Sec. 7, T6S, R8E to SW 1/4 corner said Sec.
D. Gilmer	1909	1909					14	382	8	112				(40')	(Gilmer Pike) NW corner Sec. 6, T6S, R8E to SW 1/4 corner said Sec.
Joint with Logan County	1911	1911							8	149				(40')	(Santa Fe Joint Pike) Santa Fe south to Logan County
Auglaize County	1954	1954								MR 6	200-207			50'	NE corner Sec. 1, T5S, R7E to SE corner Sec. 12 said Township
Auglaize County	1972									215	161 & 166				W 1/4 corner Sec. 7, T6S, R8E north 2647' (60' off the east side)
Auglaize County	1982														(Logan County Deed Vol. 395, p. 677&681) NW corner Sec. 18, T6S, R8E south to Metz Ditch (55' off the east side)
Auglaize County	1996														(Logan County Deed O.R. 292, p. 581) W1/4 corner Sec. 7, T6S, R8E north to NW corner said Sec. (45' and 50' off the east side)

Logan County lists this road as: C.R. 17



INDEXED ON MAP
4359 1P-1

Sante Fe Line Rd.

