

MARCH 28, 1970  
 SURVEY OF LOT 4  
 OLD MIDWAY PLACE  
 SEC. 35 T 6 S R 8 E  
 STOKES TOWNSHIP  
 LOGAN COUNTY, OHIO

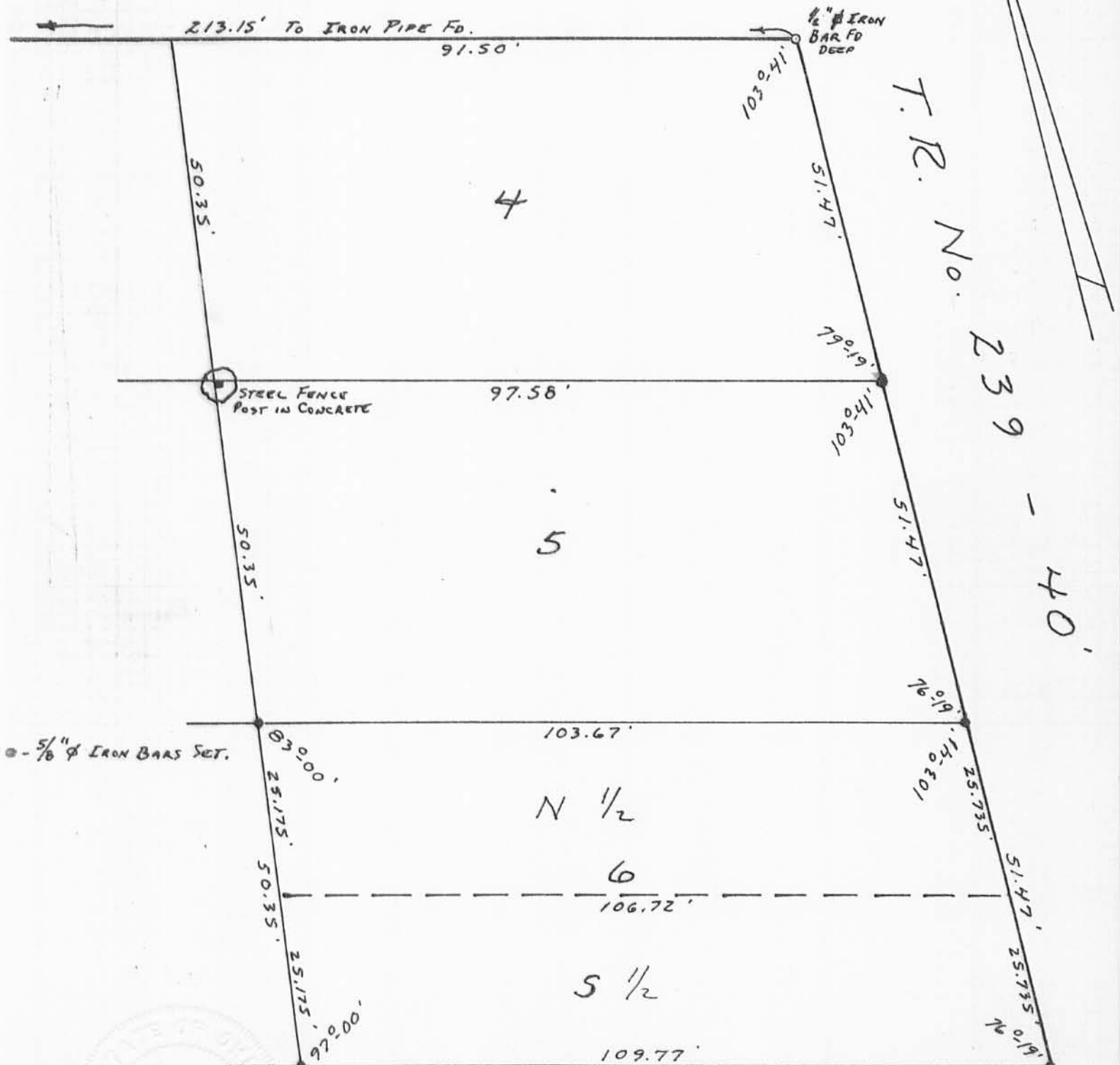
1P  
 4658

INDEXED ON MAP

LESSON 4  
 RE 2

IRON PIPE  
FD = DEEP

MAIN ST. - 30'



SURVEYED AND PLATED BY:  
 DANIEL E. GILBERT, P.S.  
 REG. SUR. No. 5402  
 1041 N. MAIN ST.  
 BELLEFONTAINE, OHIO 43311

4658-2P  
 INDEXED ON MAP

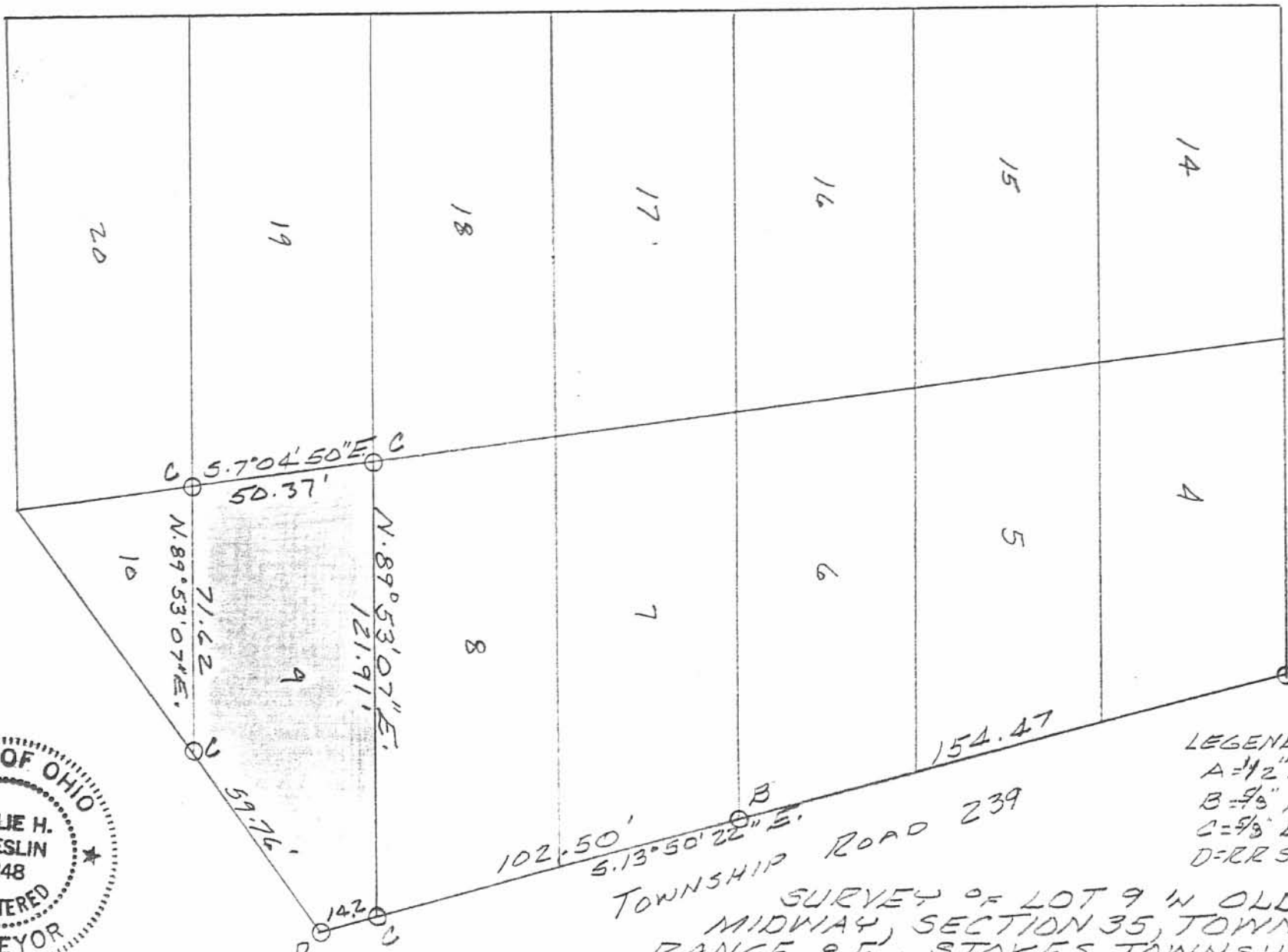
SURVEY OF LOTS 5-6  
 OLD MIDWAY PLACE  
 STOKES TOWNSHIP  
 LOGAN COUNTY, OHIO  
 JUNE 26, 1982

SCALE: 1" = 20'

PIKE AVE. (30')



MAIN ST. (30')



LEGEND:  
A=1/2" BAR FD  
B=3/8" BAR FD  
C=5/8" BAR SET  
D=RR SPK SET

SURVEY OF LOT 9 IN OLD  
MIDWAY, SECTION 35, TOWN 6 S.,  
RANGE 8 E., STOKES TOWNSHIP,  
LOGAN COUNTY, OHIO FOR  
BETTY RETTIG.

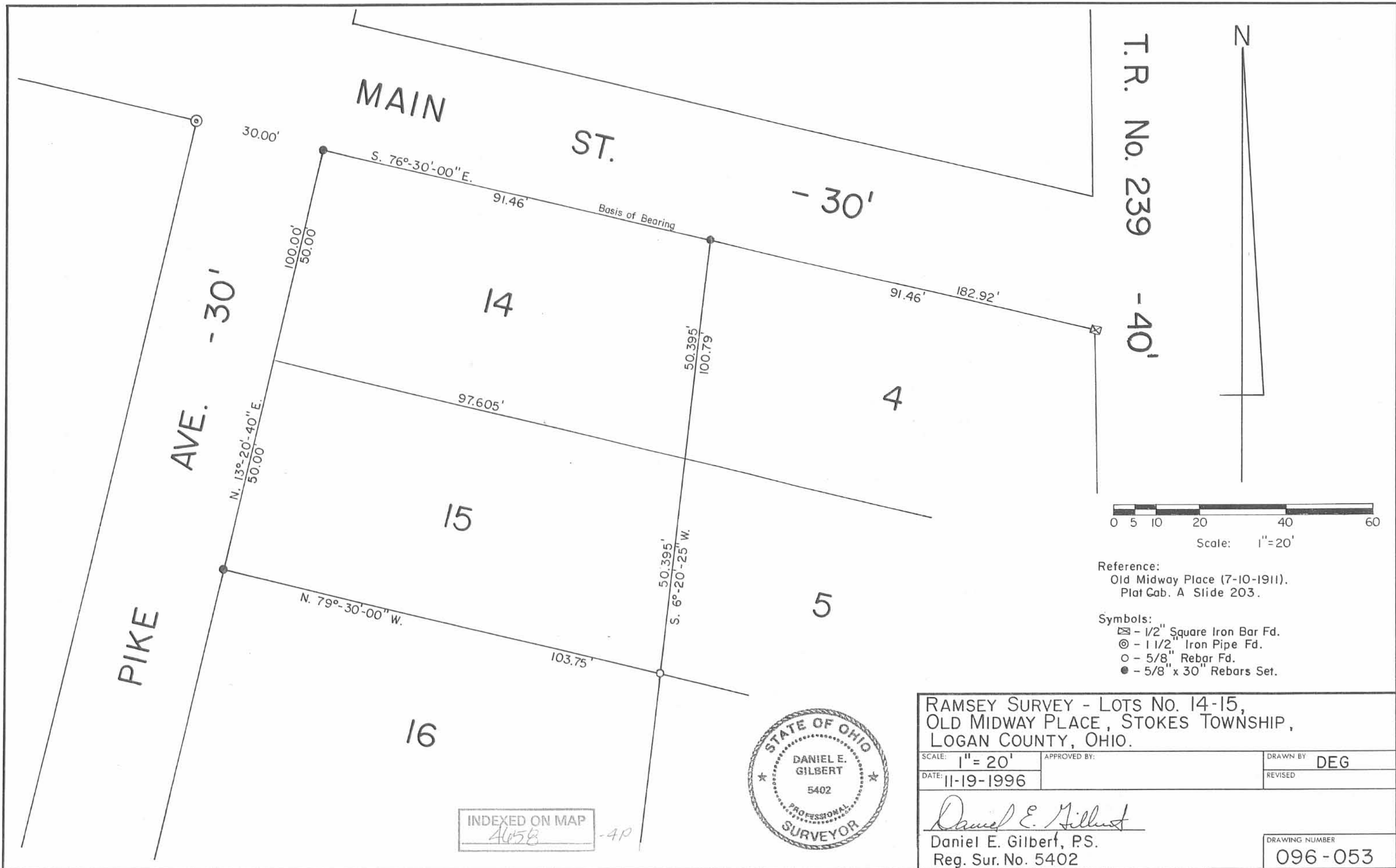
MAY, 1989  
SCALE: 1" = 40'

U.S.R. 33

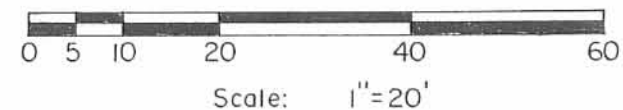
INDEXED ON MAP  
4658



Leslie H. Geeslin  
LESLIE H. GEESLIN  
RUSHSVLVANIA, OHIO



T.R. No. 239 - 30'  
- 40'



Reference:  
Old Midway Place (7-10-1911).  
Plat Gab. A Slide 203.

- Symbols:
- ⊠ - 1/2" Square Iron Bar Fd.
  - ⊙ - 1 1/2" Iron Pipe Fd.
  - - 5/8" Rebar Fd.
  - - 5/8" x 30" Rebars Set.

RAMSEY SURVEY - LOTS NO. 14-15,  
OLD MIDWAY PLACE, STOKES TOWNSHIP,  
LOGAN COUNTY, OHIO.

SCALE: 1" = 20'	APPROVED BY:	DRAWN BY: DEG
DATE: 11-19-1996		REVISED:

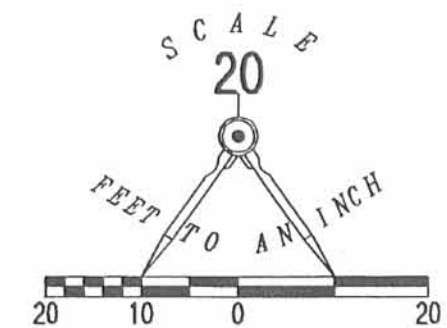
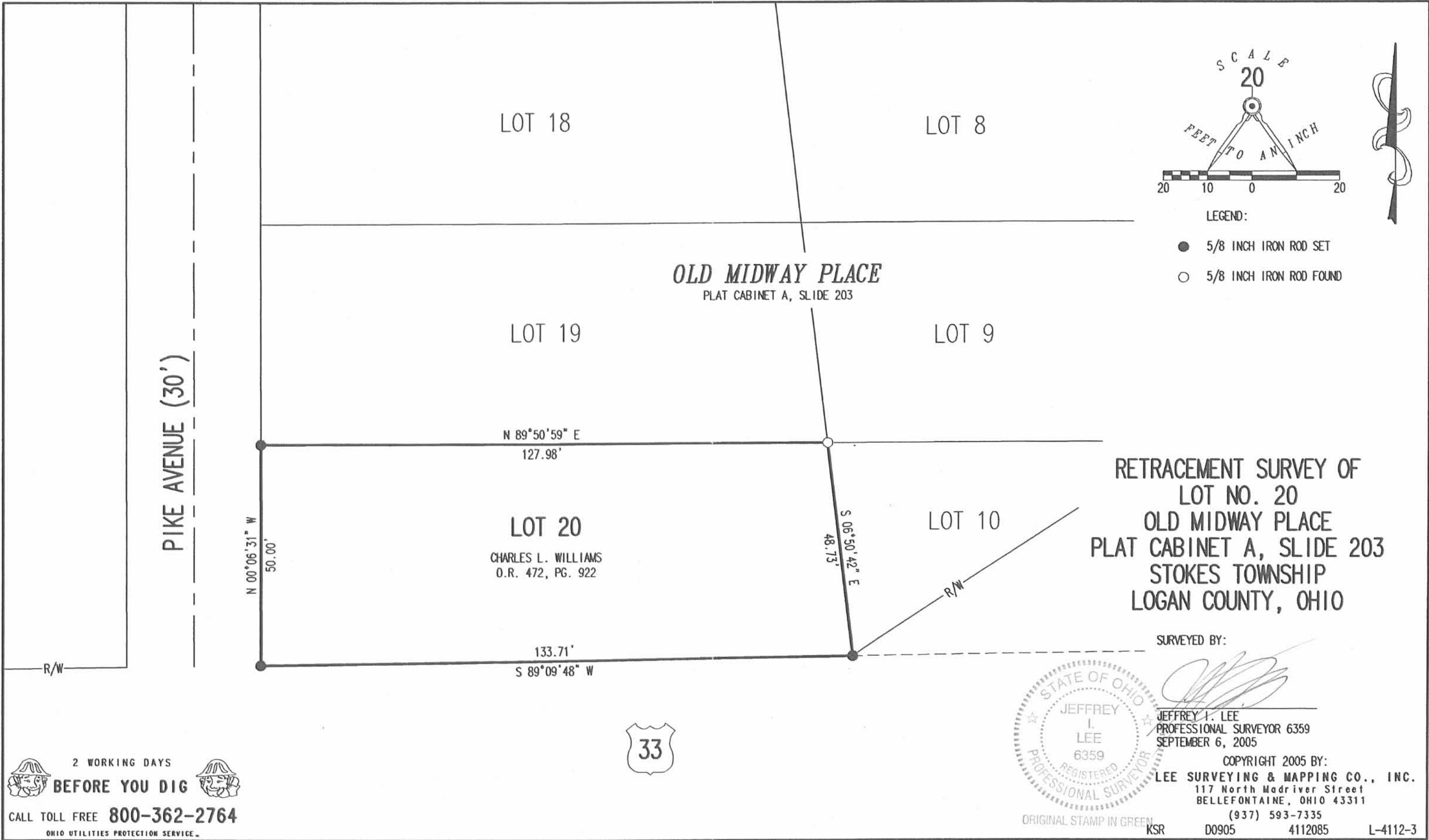
*Daniel E. Gilbert*  
 Daniel E. Gilbert, P.S.  
 Reg. Sur. No. 5402

DRAWING NUMBER  
 096-053



INDEXED ON MAP  
4658 -4P

REV'D 9-13-05 SWYOK



LEGEND:

- 5/8 INCH IRON ROD SET
- 5/8 INCH IRON ROD FOUND

**RETRACEMENT SURVEY OF  
 LOT NO. 20  
 OLD MIDWAY PLACE  
 PLAT CABINET A, SLIDE 203  
 STOKES TOWNSHIP  
 LOGAN COUNTY, OHIO**

SURVEYED BY:

JEFFREY I. LEE  
 PROFESSIONAL SURVEYOR 6359  
 SEPTEMBER 6, 2005



COPYRIGHT 2005 BY:  
**LEE SURVEYING & MAPPING CO., INC.**  
 117 North Madriver Street  
 BELLEFONTAINE, OHIO 43311  
 (937) 593-7335  
 KSR D0905 4112085 L-4112-3

2 WORKING DAYS  
**BEFORE YOU DIG**  
 CALL TOLL FREE **800-362-2764**  
 OHIO UTILITIES PROTECTION SERVICE



INDEXED ON MAP  
 4050 5P