

TR 16

14+05.8 $\Delta = 0^{\circ} 10' RT$ \square CUT STONE FD
 14+00 $(0^{\circ} 20')$

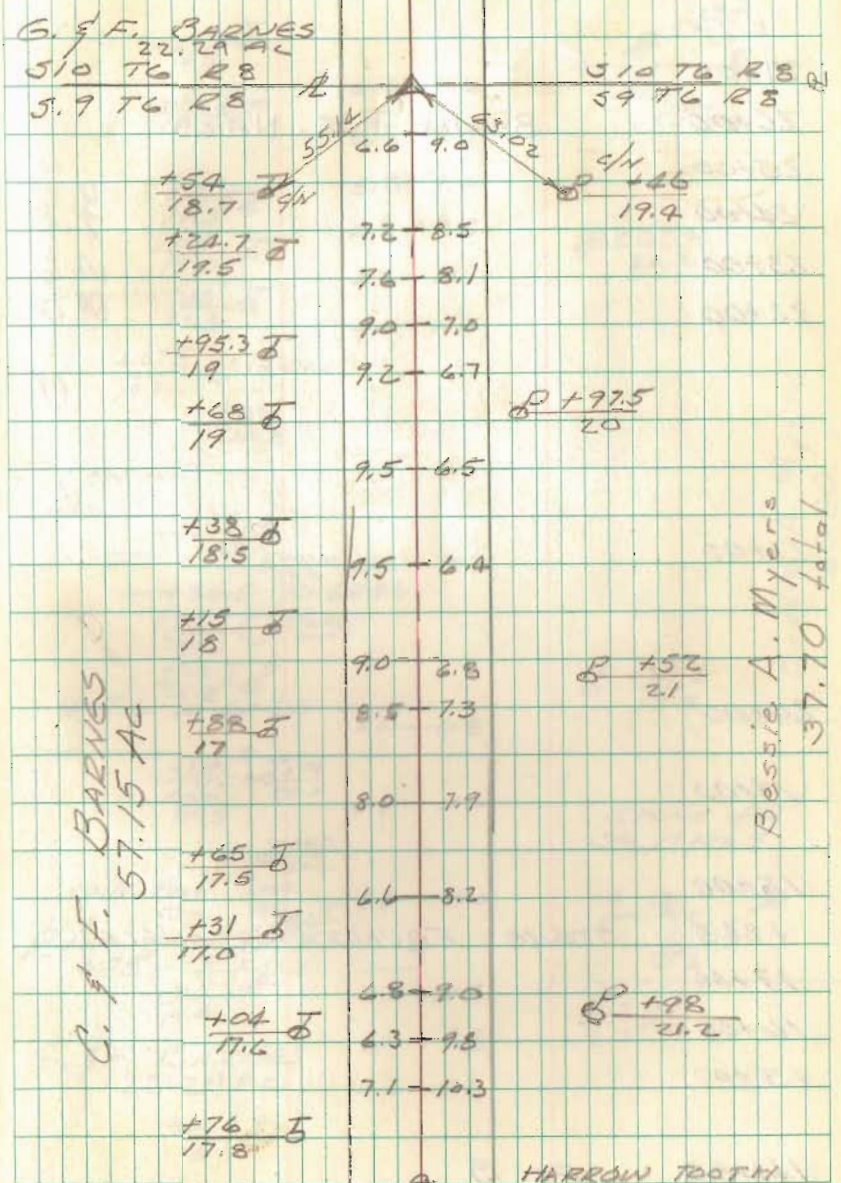
13+00
 12+00
 11+00
 10+00
 9+00
 8+00
 7+00
 6+00
 5+00
 4+00
 3+00
 2+00
 1+00
 0+00

PAVEMENT USR 33

WINDY

GREGG
 NICHOLS
 VAUGHN 5/8/70

36



C. F. BARNES
 57.15 AC

Bessie A. Myers
 37.70 total

28+00 T.R. 16

27+00

26+00 BEGIN P.K. NAILS

25+00

24+00

23+00

22+00

21+00

20+00

19+00

18+00 +84.5 STONE FOUND (NO ANGLE)

17+00

16+00

15+00

14+05.8 PT B

GEESLIN
NICHOLS
RICKETTS

5/11/70

G. BARNES
82 AC.

+59.2 J
19.4

+24.5 J
19.7

+41.5 J
19.5

+56 J
19.0

+33 J
21.2

+67.5 J 18" DIA
19.7

+36
60.8

2 STA FRM
RES.

+10
59.9

+90.5 J 10" GR DR
20.8

+15 J 12" WOOD
20.8

+27.5 J
26.5

+11.6 J 10" GR DR

+97.0 J
100

+79 J
20.4

+63 J
20.2

CONC POST

+84.5 J
19.5

+75 J
19.4

+41.5 J
19.4

G. F. BARNES
22.29 AC.

+81.5 J
18.8

6.4 - 8.6

6.2 - 9.0

5.8 - 9.4

4.4 - 9.8

4.7 - 10.1

4.2 - 10.7

4.4 - 10.7

4.0 - 10.8

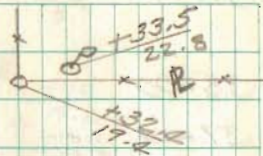
4.5 - 10.2

4.8 - 10.0

4.8 - 10.5

5.0 - 9.8

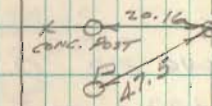
6.2 - 9.5



P +87.4
20.2

P +29.8
18.9

STONE FD
STA 17+84.5



P +91.7
19.4

Bessie A. Myers
40.00.

T.R. 16

56+00

55

+87.45 1" PIPE FD. 15' NORTH OF E (cont)

54+00

53+00

52+00

51+00

50+00

49+00

48+00

47+00

46+00

45+00

44+00

43+00

42+00

41+00

40+00

39+00

GEESEIN
NICHOLS
RICKETTS

5/11/70

39

+70.2 ♂
19.5

P 1" PIPE

+23.4 ♂
19.2+26 ♂
19.3+66.8 ♂
18.7

+67 11' FD.

+65.3 ♂
19.4+29 ♂
19.2+57.6 ♂
19.1+52.5 ♂
19.1+15 ♂
20.1P+ x 0 +94.9
20.3+74.6 ♂
19+37.6 ♂
19.3A. GRATZ
82 AC

CONC CIB.

+16.3 ♂
12.3+195.4 ♂
18.8+59 ♂
18.6

6.0 - 8.6

5.0 - 9.5

6.9 - 9.9

7.9 - 8.5

8.1 - 8.5

7.2 - 8.3

7.8 - 8.8

6.8 - 8.4

7.3 - 8.4

7.4 - 7.8

7.0 - 9.1

7.0 - 7.6

7.2 - 8.6

7.2 - 8.6

7.1 - 8.9

7.5 - 7.6

6.9 - 7.6

+00

18.8

+00

+00

+00

+00

+00

+00

+00

+00

+00

+00

+00

+00

+00

+00

+00

P 146.2

+00 20.2

19.1

+00

19.5

+00

19.8

x P +02

20.6

+00

18.9

+81 11' FD.

+00

19.8

+00

19.2

+00

19.5

+00

19.6

+00

19.4

+00

19.5

P +07.4

20

+00

19.2

x +00

18.4

x +00

18.5

P +51

19.3

CONC OB.

+00

19.6

x +00

19.7

STA.	B.S.	HI	F.S.	ELEV
B.M.	3.85	1040.24		1036.39
T/P	2.83	1039.90	3.17	1037.07
T/P	4.97	1037.24	7.13	1032.77
T/P	5.35	1035.37	7.22	1030.02
T/P	4.36	1031.83	7.90	1027.47
T/P	4.69	1031.45	5.07	1026.76
B.M.			3.53	1027.92

CHECK LEVELS

B.M.	3.15	1031.07		1027.92
T/P	5.03	1031.79	2.31	1026.76
T/P	8.19	1035.64	4.34	1027.45
T/P	7.15	1037.15	5.64	1030.00
T/P	7.10	1039.84	4.41	1032.74
T/P	3.32	1040.36	2.80	1037.04
B.M.			4.00	1036.36

GEESLIN
NICHOLS
RICKETS

5/14/70

42

B.M. - CHISLED □ S.E. COR. OF CONCI
CULVERT HEADWALL IN SOUTHEAST
COR. OF INTERSECTION OF T.R. 16
AND U.S.R. 33.

N.W. CORNER OF 3RD STEP FROM HOUSE
STA 32+53.2

ELEV 1036.39