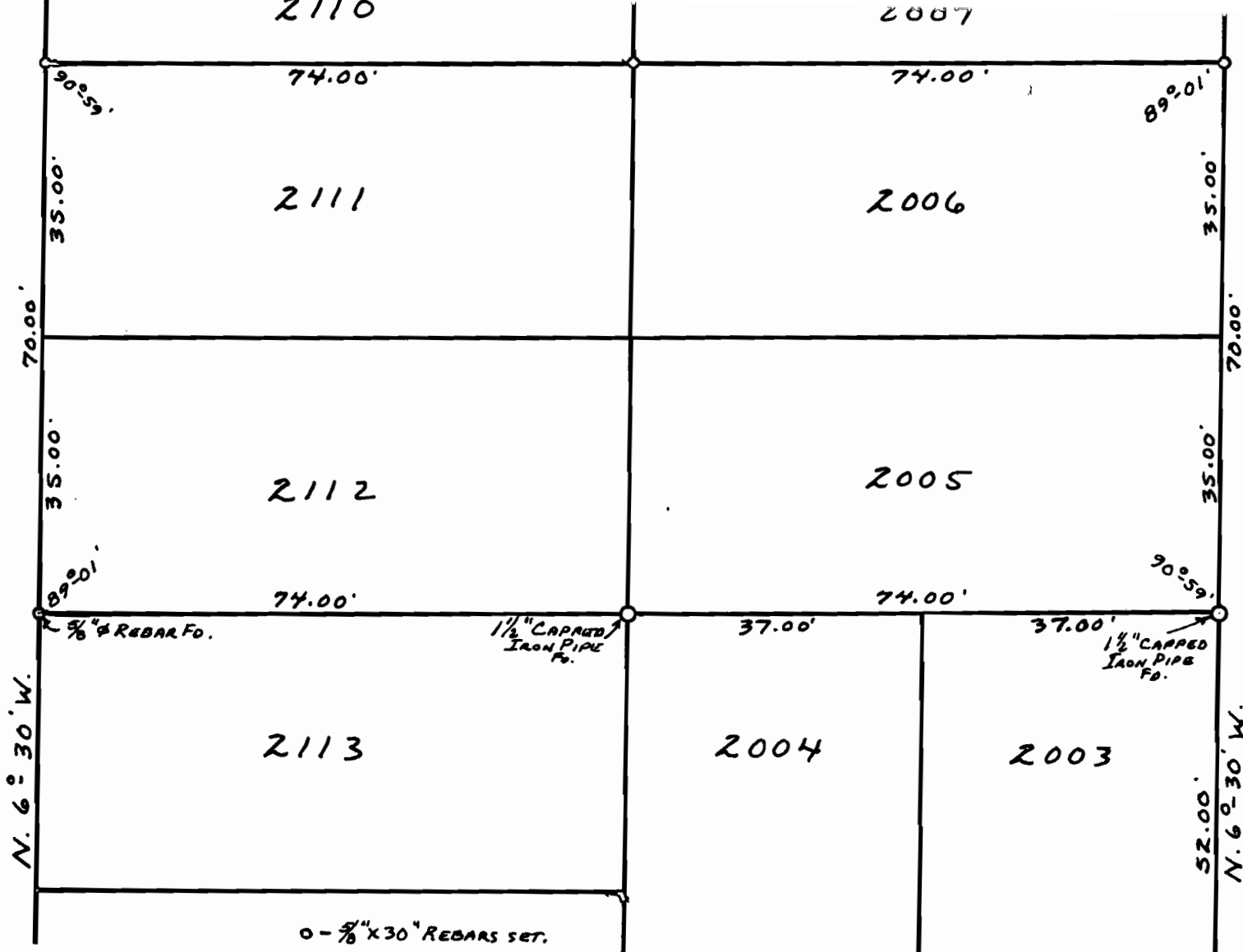


ONEDIA PATH - 35'



KIOWA PATH - 35'



GASTON SURVEY  
 LOTS 2005, 2006, 2111, 2112  
 CHIPPEWA PARK No. 3  
 STOKES TOWNSHIP  
 LOGAN COUNTY, OHIO  
 SEPTEMBER 13, 1988

SCALE: 1" = 20'

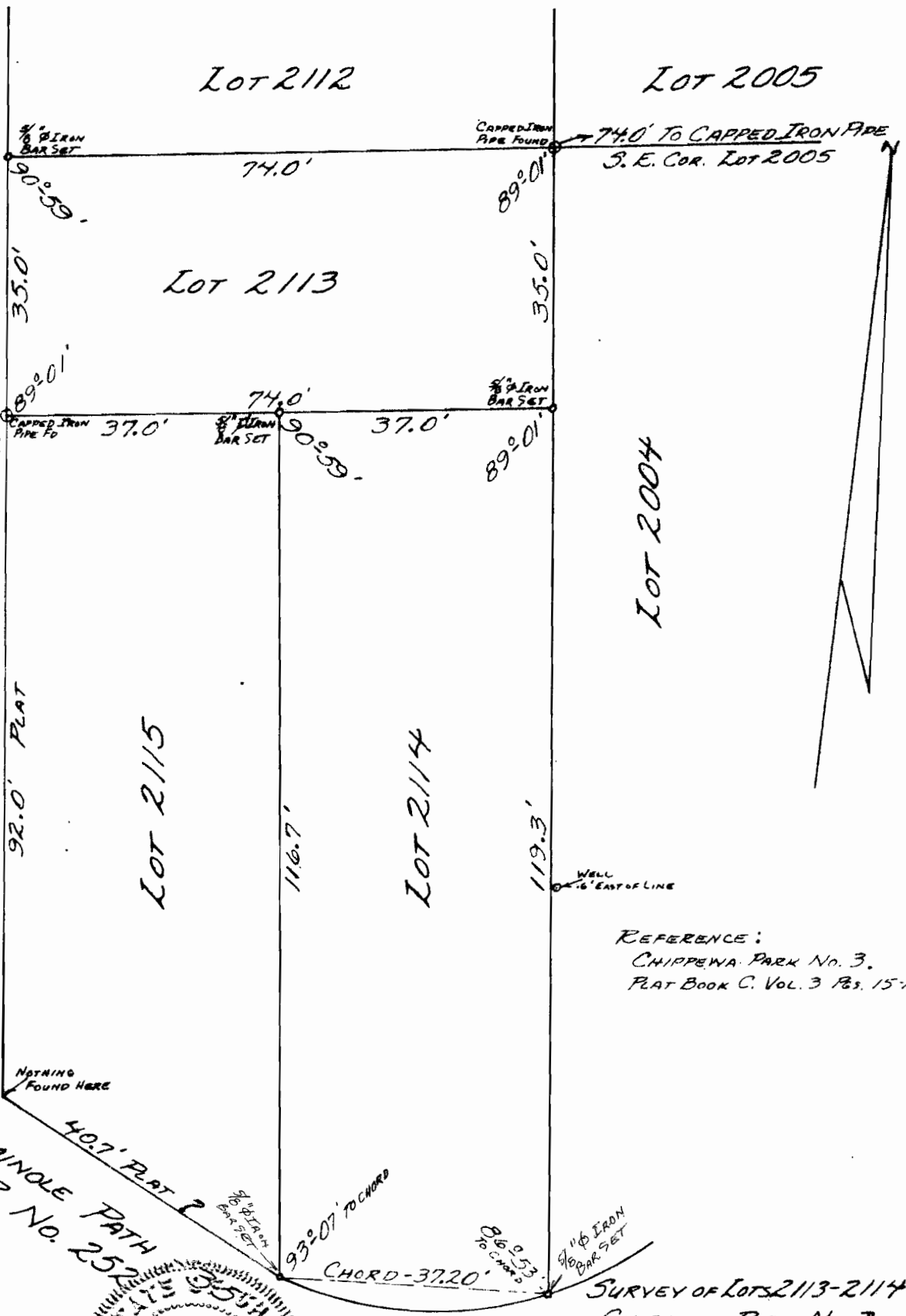


*Daniel E. Gilbert*  
 DANIEL E. GILBERT, P.S.  
 REG. SUR. No. 5402  
 400 N. PARK ST.  
 BELLEFONTAINE, OHIO  
 43311

INDEXED ON MAP  
 5041 IP

ONEIDA PATH - 35'

N. 62°30' W. 92.0' PLAT



SEMINOLE PATH  
T. R. No. 252

REFERENCE:  
CHIPPEWA PARK No. 3.  
PLAT BOOK C. VOL. 3 Pgs. 15-16.

SURVEY OF LOTS 2113-2114  
CHIPPEWA PARK No. 3  
V.M.S. No. 12276  
STOKES TOWNSHIP  
LOGAN COUNTY, OHIO  
APRIL 10, 1972  
SCALE: 1" = 20'

SURVEYED AND PLATTED BY  
DANIEL E. GILBERT,  
REG. SUR. No. 5402  
1041 N. MAIN ST.  
BELLEFONTAINE, OHIO 43311



INDEXED ON MAP  
5.091-2P