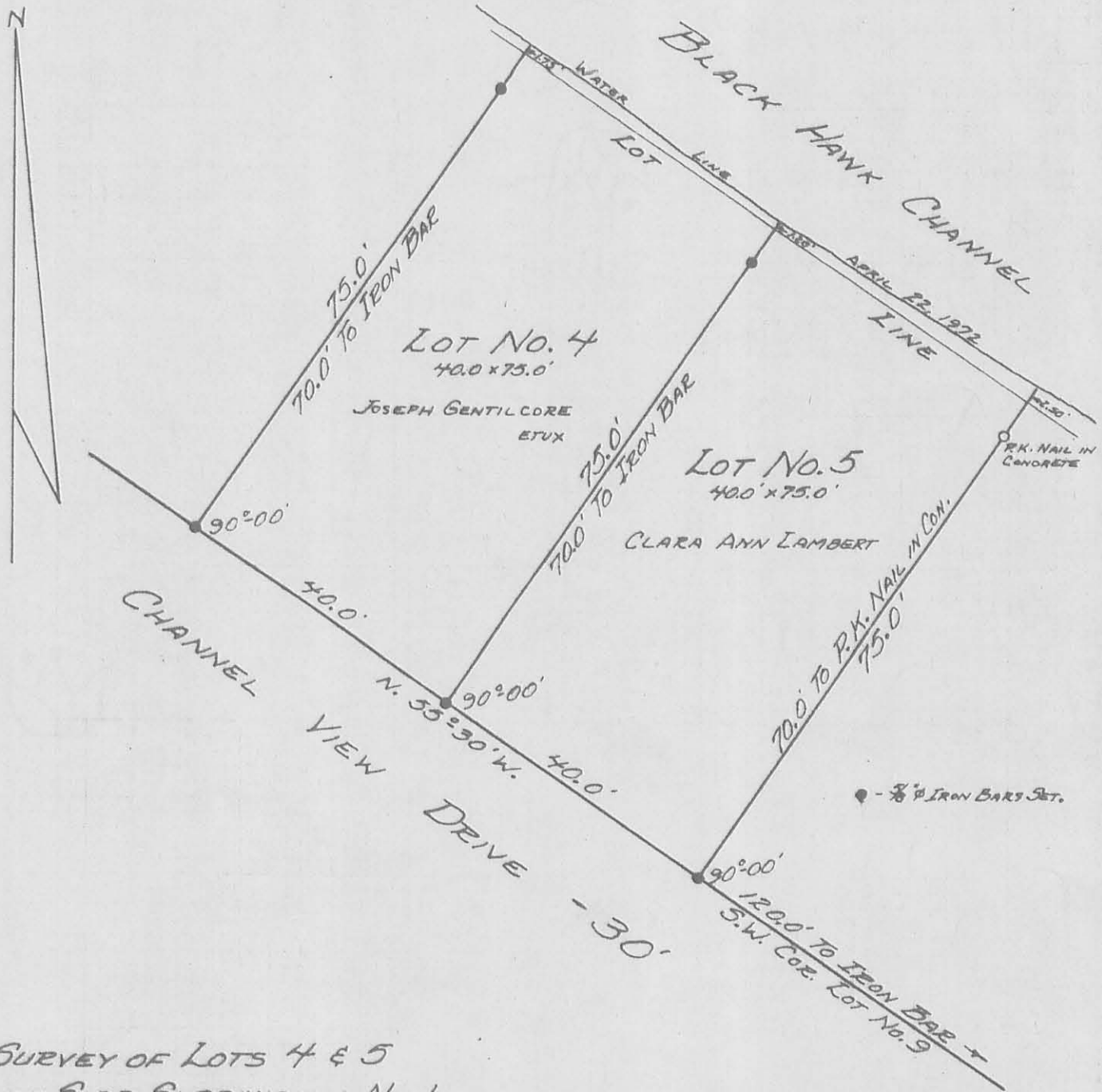


SURVEY OF LOT No. 2
 INDIAN LAKE WEST SIDE
 SUBDIVISION No. 1
 STOKES TOWNSHIP
 LOGAN COUNTY, OHIO
 JUNE 21, 1969
 SCALE 1" = 20'

INDEXED ON MAP
 5045 1P

DAN L. DODSON
 REG. SURVEYOR 4270
 BELLEFONTAINE, O.



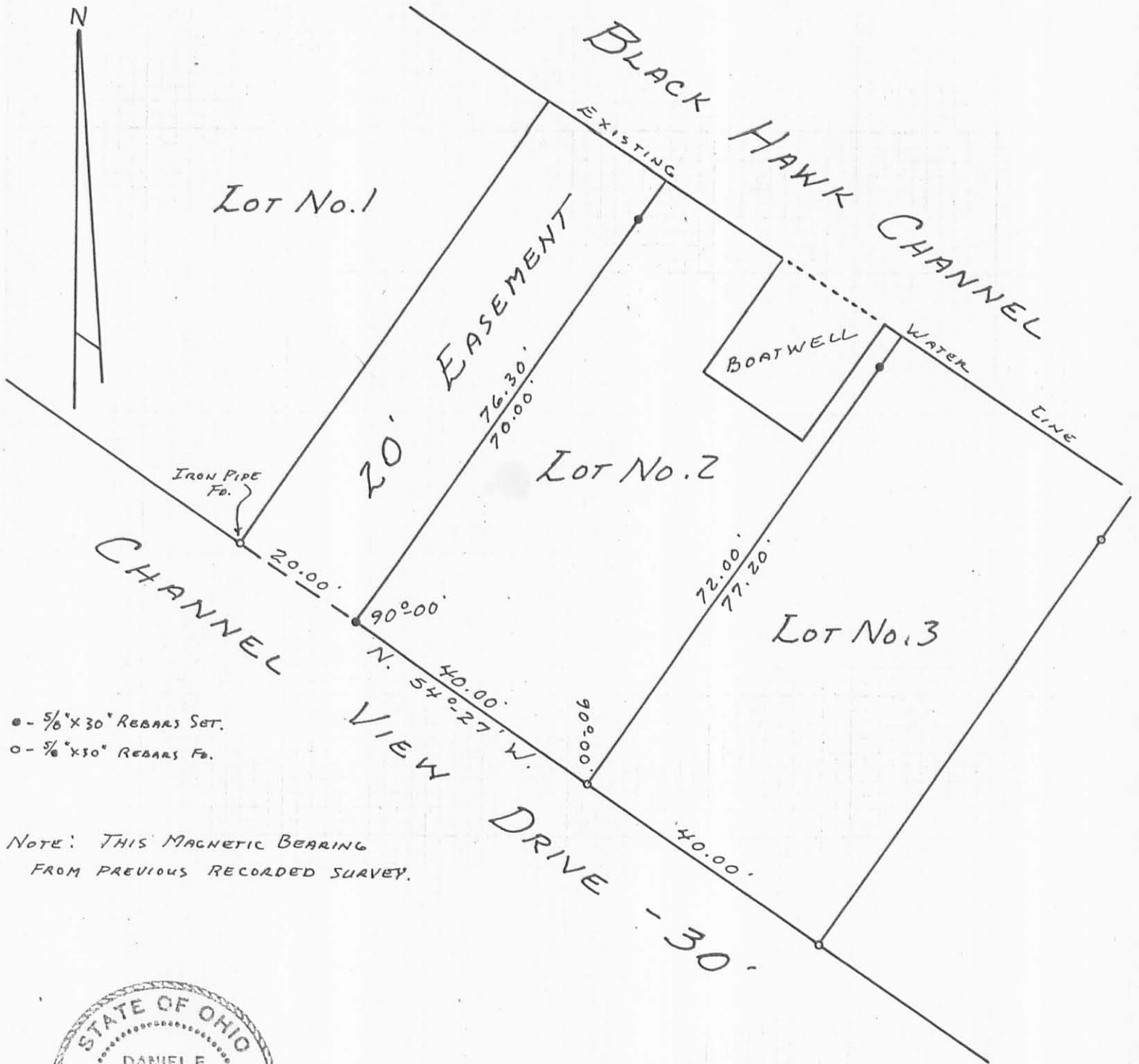
SURVEY OF LOTS 4 & 5
 WEST SIDE SUBDIVISION No. 1
 STOKES TOWNSHIP
 LOGAN COUNTY, OHIO
 APRIL 22, 1972

SCALE: 1"=20'



SURVEYED AND PLATTED BY:
 DANIEL E. GILBERT, P.S.
 REG. SUR. NO. 5402
 1041 N. MAIN ST.
 BELLEFONTAINE, OHIO 43311

INDEXED ON MAP
5045 2P



- - 5/8" x 30" REBARS SET.
- - 5/8" x 30" REBARS Fc.

NOTE: THIS MAGNETIC BEARING
FROM PREVIOUS RECORDED SURVEY.



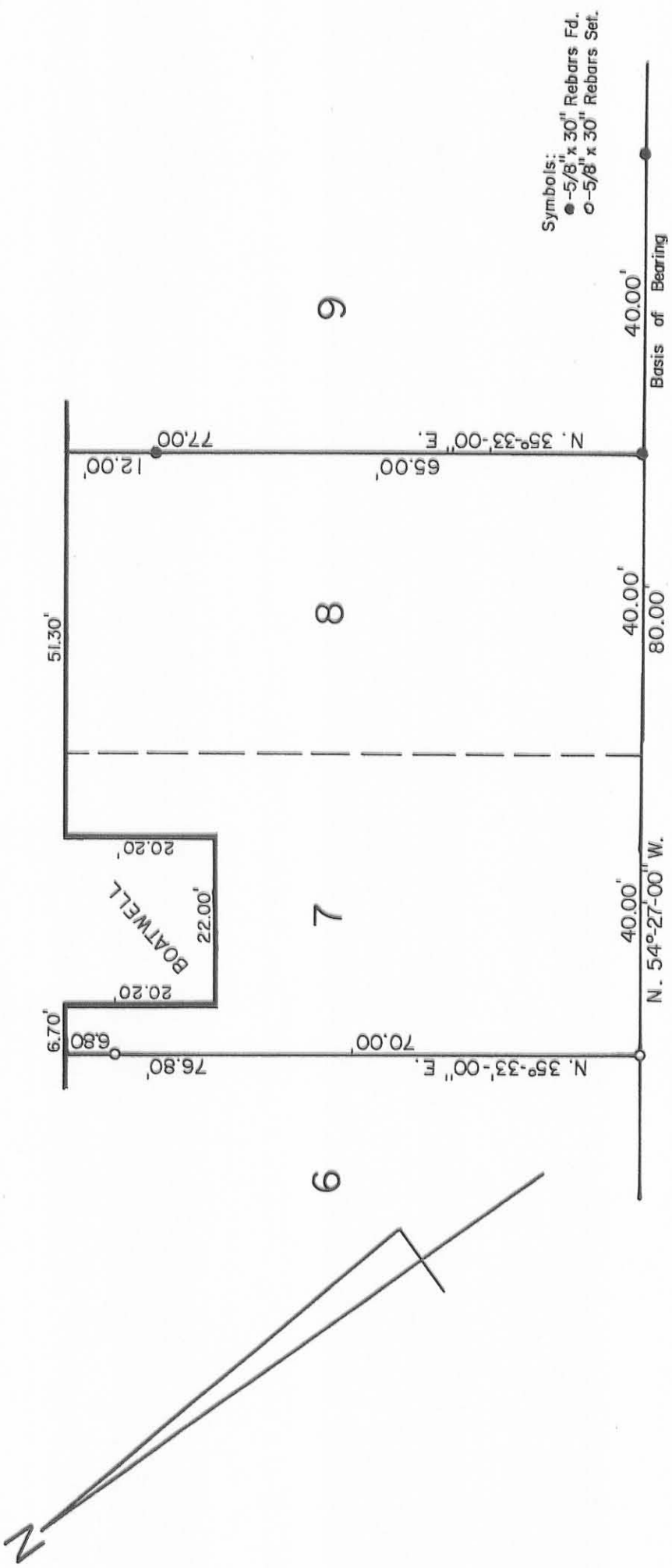
INDEXED ON MAP
5045 3P

Daniel E. Gilbert
 DANIEL E. GILBERT, P.S.
 REG. SUR. NO. 5402
 105 ORGAN ST.
 BELLEFONTAINE, OHIO 43311

SURVEY OF LOT 2
 WEST SIDE SUB. NO. 1
 STOKES TOWNSHIP
 LOGAN COUNTY, OHIO
 NOVEMBER 16, 1985
 SCALE: 1"=20'

Blackhawk Channel

Channel View Drive - 30'



Symbols:
 ● - 5/8" x 30" Rebars Fd.
 ○ - 5/8" x 30" Rebars Set.

INDEXED ON MAP
 5045 4P

Survey of Lots No. 7-8
 Side Subdivision No. One
 Stokes Township
 Logan County, Ohio
 June 10, 1991



Scale: 1" = 20'



Daniel E. Gilbert

DANIEL E. GILBERT, P.S.
 REG. SUR. NO. 5402
 400 N. PARK ST.
 BELLEFONTAINE, OHIO 43311
 TELEPHONE: 1 (513) 593-1428

