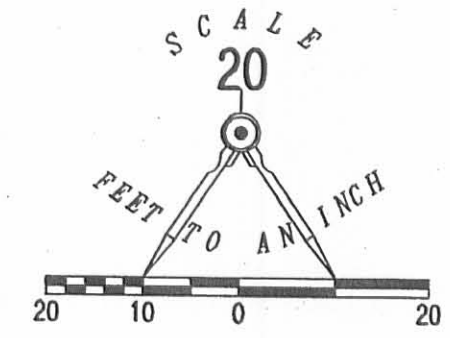
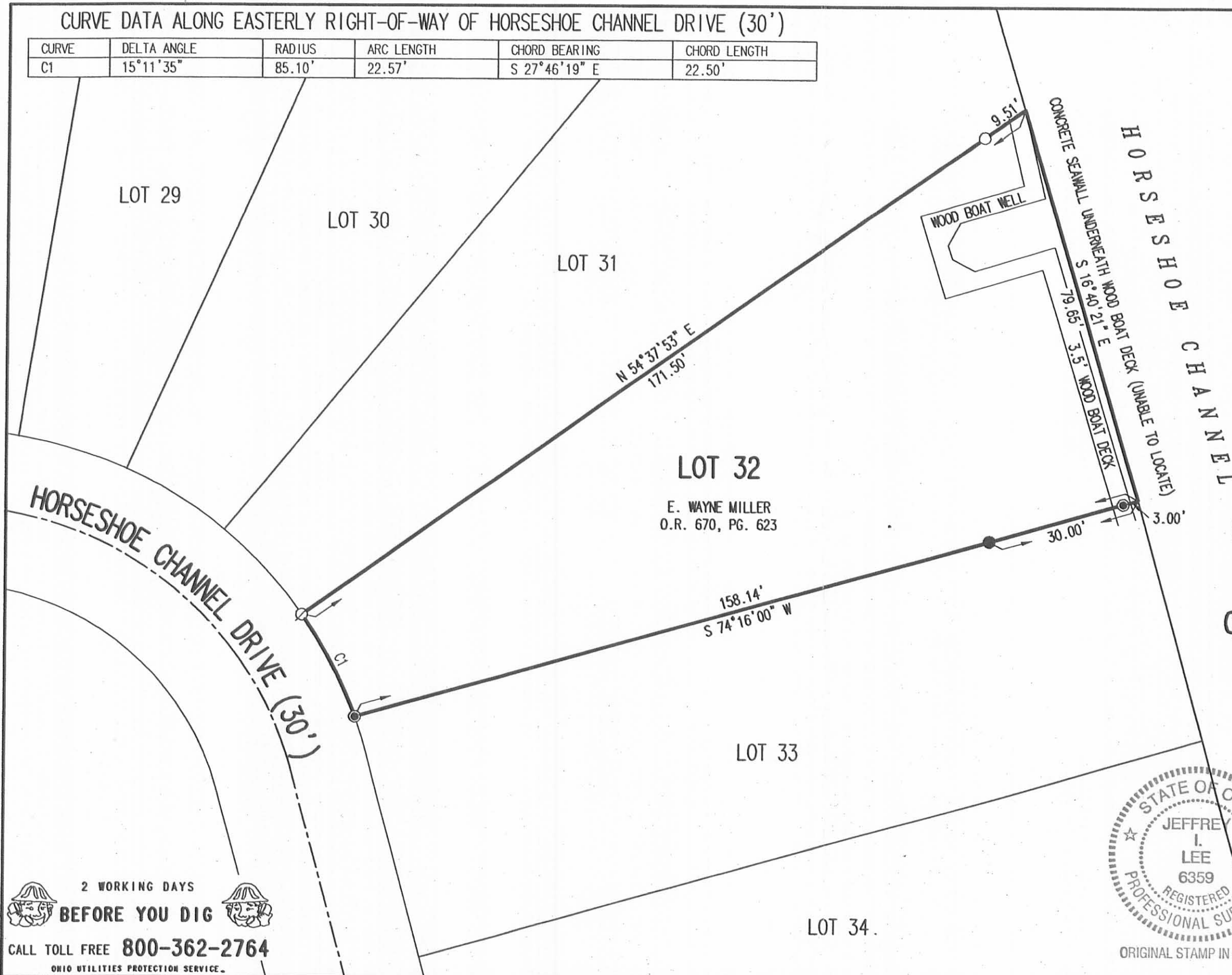


REC'D 3-29-06 SML/OK

CURVE DATA ALONG EASTERLY RIGHT-OF-WAY OF HORSESHOE CHANNEL DRIVE (30')

CURVE	DELTA ANGLE	RADIUS	ARC LENGTH	CHORD BEARING	CHORD LENGTH
C1	15°11'35"	85.10'	22.57'	S 27°46'19" E	22.50'

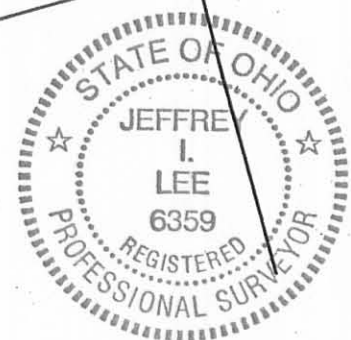


- LEGEND:
- ⊗ MAG NAIL FOUND
 - ⊙ MAG NAIL SET
 - 5/8 INCH IRON ROD FOUND
 - 5/8 INCH IRON ROD SET

RETRACEMENT SURVEY OF THE
 E. WAYNE MILLER
 LOT 32
 EXTENSION TO BYERS HORSESHOE
 CHANNEL SUBDIVISION #2
 PLAT CABINET A, SLIDE 367
 OFFICIAL RECORD 670, PAGE 623
 SECTION 23, TOWN 6, RANGE 8
 STOKES TOWNSHIP
 LOGAN COUNTY, OHIO

SURVEYED BY:

Jeffrey I. Lee
 JEFFREY I. LEE
 PROFESSIONAL SURVEYOR 6359
 MARCH 27, 2006



ORIGINAL STAMP IN GREEN

COPYRIGHT 2006 BY:
 LEE SURVEYING & MAPPING CO., INC.
 117 North Madriver Street
 BELLEFONTAINE, OHIO 43311
 (937) 593-7335
 KSR D0306 735036 L-735-3

2 WORKING DAYS
BEFORE YOU DIG
 CALL TOLL FREE **800-362-2764**
 OHIO UTILITIES PROTECTION SERVICE

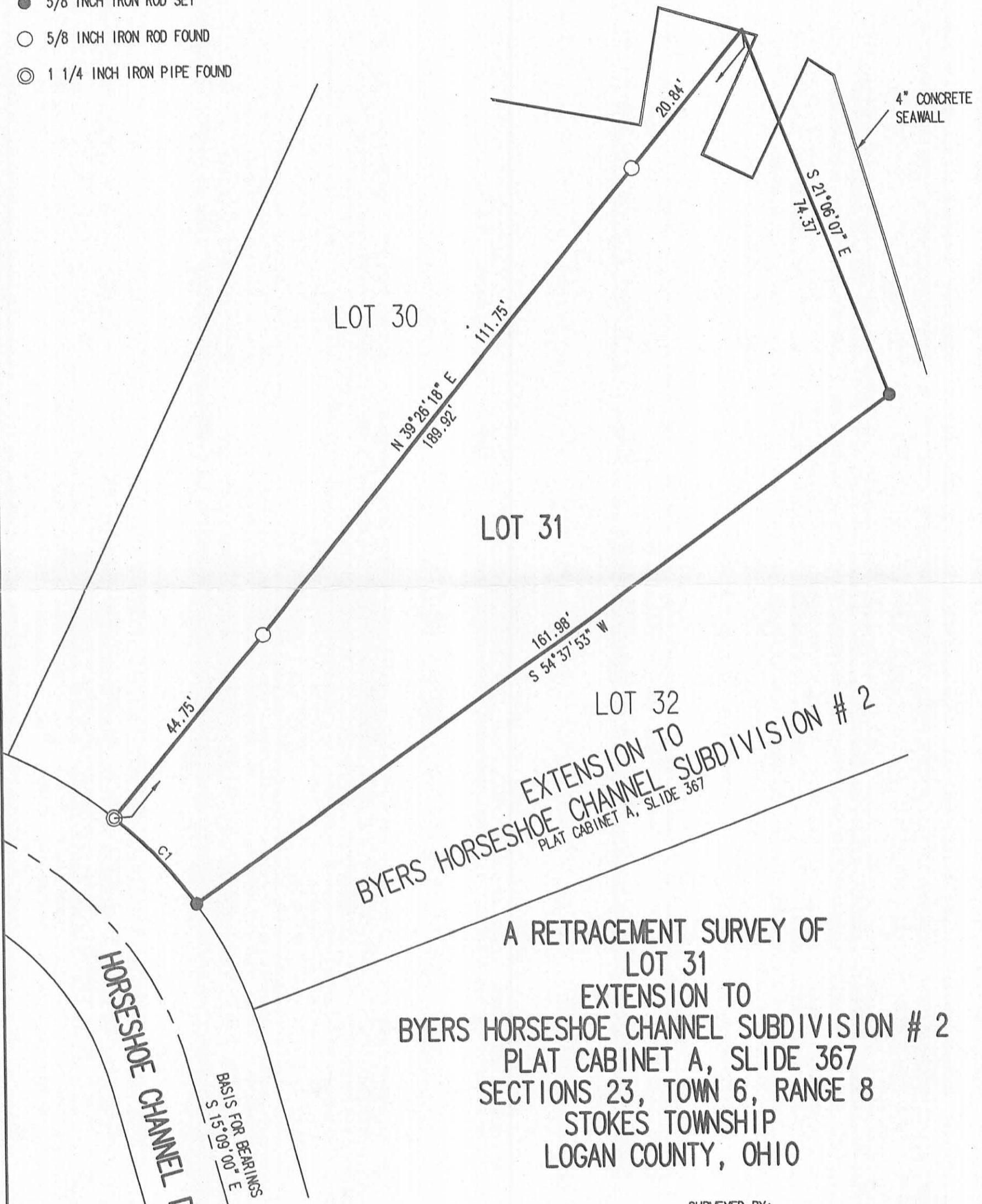
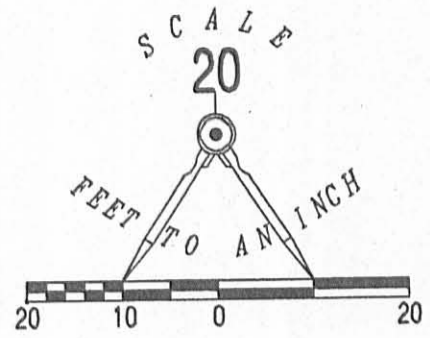
INDEXED ON MAP
 5194 IP

REC'D 2-27-06 SMJ/OK

CURVE	DELTA ANGLE	RADIUS	ARC LENGTH	TANGENT	CHORD LENGTH	CHORD BEARING
C1	15°11'35"	85.10'	22.57'	11.35'	22.50'	S 42°57'54" E

LEGEND

- 5/8 INCH IRON ROD SET
- 5/8 INCH IRON ROD FOUND
- ⊙ 1 1/4 INCH IRON PIPE FOUND



A RETRACEMENT SURVEY OF
 LOT 31
 EXTENSION TO
 BYERS HORSESHOE CHANNEL SUBDIVISION # 2
 PLAT CABINET A, SLIDE 367
 SECTIONS 23, TOWN 6, RANGE 8
 STOKES TOWNSHIP
 LOGAN COUNTY, OHIO

SURVEYED BY:

[Signature]
 JEFFREY I. LEE
 PROFESSIONAL SURVEYOR 6359
 FEBRUARY 23, 2006

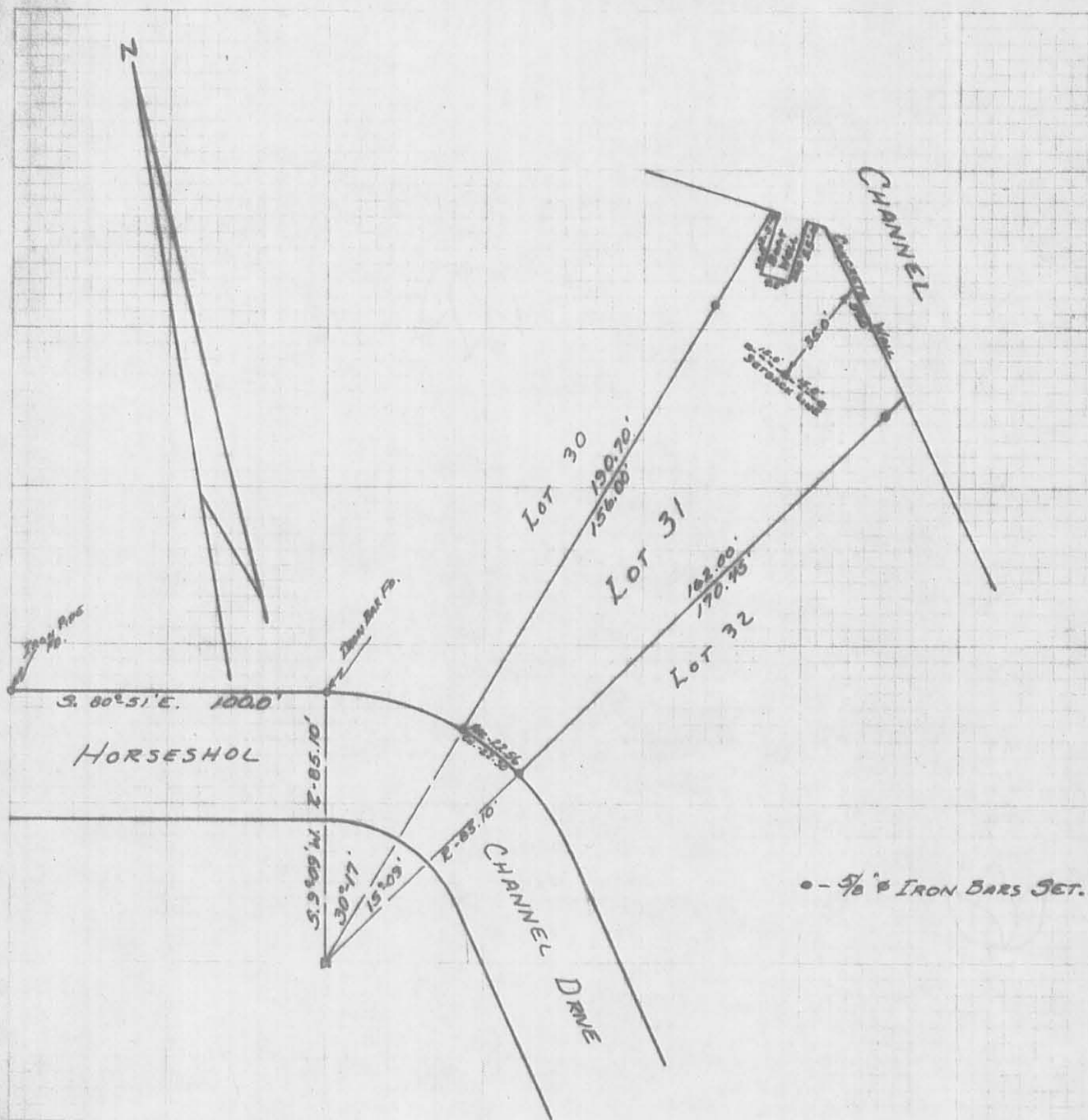


COPYRIGHT 2006 BY:
 LEE SURVEYING & MAPPING CO., INC.
 117 North Madriver Street
 BELLEFONTAINE, OHIO 43311
 (937) 593-7335
 ADW D0206 4192026 L-4192026-3

2 WORKING DAYS
BEFORE YOU DIG
 CALL TOLL FREE **800-362-2764**
 OHIO UTILITIES PROTECTION SERVICE.

INDEXED ON MAP
 5194 2P

ORIGINAL STAMP IN GREEN



REFERENCE:

BYERS HORSESHOE CHANNEL
 SUBDIVISION No. 2 - EXT. No. 4.
 PLAT BOOK 4 VOL. D. PAGE 56.
 ENG. FILE NO. J-153.

SURVEYED AND PLATTED BY:
 DANIEL E. GILBERT, P.S.
 REG. SUR. NO. 5402
 1041 N. MAIN ST.
 BELLEFONTAINE, OHIO 43311



5194 3P

INDEXED ON MAP

SURVEY OF Lot No. 31
 BYERS HORSESHOE CHANNEL
 SUBDIVISION No. 2 - EXT. No. 4
 SECTION 23 T.6S. R.8E.
 STOKES TOWNSHIP
 LOGAN COUNTY, OHIO
 OCTOBER 9, 1972

SCALE: 1" = 50'