

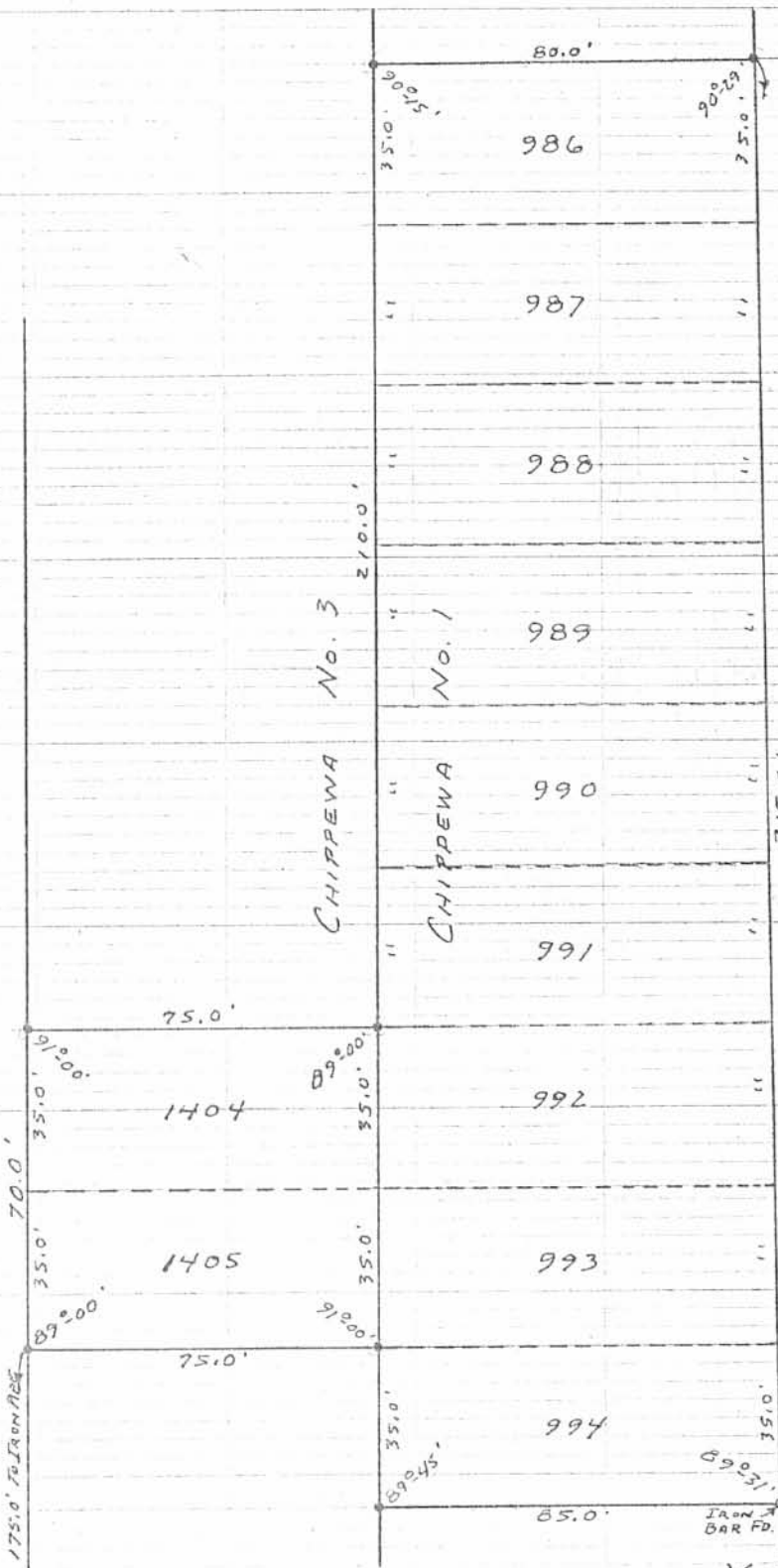


CHICKASAW PATH - 35'

MOHAWK PATH - 35'

CHIPPEWA No. 3

CHIPPEWA No. 1



a - 3/8" IRON BARS SET.

5658 IP

INDEXED ON MAP

SURVEYED AND PLATTED BY:  
 DANIEL E. GILBERT, P.S.  
 REG. SUR. NO. 5402  
 1041 N. MAIN ST.  
 BELLEFONTAINE, OHIO 43311

YOKUM SURVEY  
 LOTS 986 TO 994 - CHIPPEWA No. 1  
 LOTS 1404-1405 CHIPPEWA No. 3  
 STOKES TOWNSHIP  
 LOGAN COUNTY, OHIO  
 NOVEMBER 2, 1974  
 SCALE: 1" = 40'