

PLAT OF A SURVEY
 OF PART OF LOT 7
 AND PART OF LOT 8
 IN CRANE TOWN ISLAND
 ALLOTMENT, IN
 VIRGINIA MILITARY SURVEY 12276,
 STOKES TOWNSHIP,
 LOGAN COUNTY, OHIO



Thomas C. Hubbell
 Reg. Surveyor #5044

SHELDON & ASSOC. INC.



LIMA, OHIO

7 / 1 / 74	DATE	JOB NO. 8407
DRAWN	S.E.B.	
CHECKED		
APPROVED		SCALE 1" = 20'

REC'D 9-3-97 SWM DL ✓



Lee Surveying and Mapping Co., Inc.



Farm Surveys • Lot Surveys • Topography • Subdivisions • Construction Layout

117 NORTH MADRIVER STREET
BELLEFONTAINE, OHIO 43311

(937) 593-7335
FAX (937) 593-7444

JAMES WALKER 0.311 ACRE

Lying in Virginia Military Survey 12276, Stokes Township, Logan County, Ohio.

Being out of the James L. Walker and Bonnie L. Walker parts of Lot 7 and Lot 8 of Crane Town Island Allotment (Plat Cabinet A, Slide 409), as deeded and described in Volume 365, Page 271 of the Logan County Records of Deeds and being more particularly described as follows:

Beginning at a railroad spike set on the southeast corner of Lot 7 and the southwest corner of Lot 8 at an angle in the south line of a 30 feet wide private drive.

THENCE, with the east line of Lot 7, N 25°-37'-21" E, a distance of 30.38 feet to a 2 inch angle iron found.

THENCE, N 16°-23'-12" E, a distance of 150.64 feet to a point in Indian Lake, passing a 5/8 inch iron rod set at 141.73 feet and passing the face of the sea wall at 147.73 feet.

THENCE, in Indian Lake, the following four (4) courses:

N 73°-32'-00" E, a distance of 47.31 feet to a point.

N 61°-35'-00" E, a distance of 16.16 feet to a point.

S 51°-34'-00" E, a distance of 40.68 feet to a point.

S 25°-01'-01" E, a distance of 27.82 feet to a point, referenced by a 1 inch metal pipe found in concrete, N 36°-07'-09" E, a distance of 4.34 feet.

THENCE, S 36°-07'-09" W, a distance of 76.82 feet to a 5/8 inch iron rod set.

THENCE, S 54°-40'-54" W, a distance of 139.19 feet to the point of beginning, passing a chiseled 'X' set in concrete at 101.04 feet.

Containing 0.311 acre, of which 0.006 acre is within the private drive and 0.043 acre is inundated by the waters of Indian Lake.

The basis for bearings is west line of Lot 8, being N 25°-57'-00" E, and all other bearings are from angles and distances measured in a field survey by Lee Surveying and Mapping Co., Inc. on August 21, 1997.

Description prepared by:

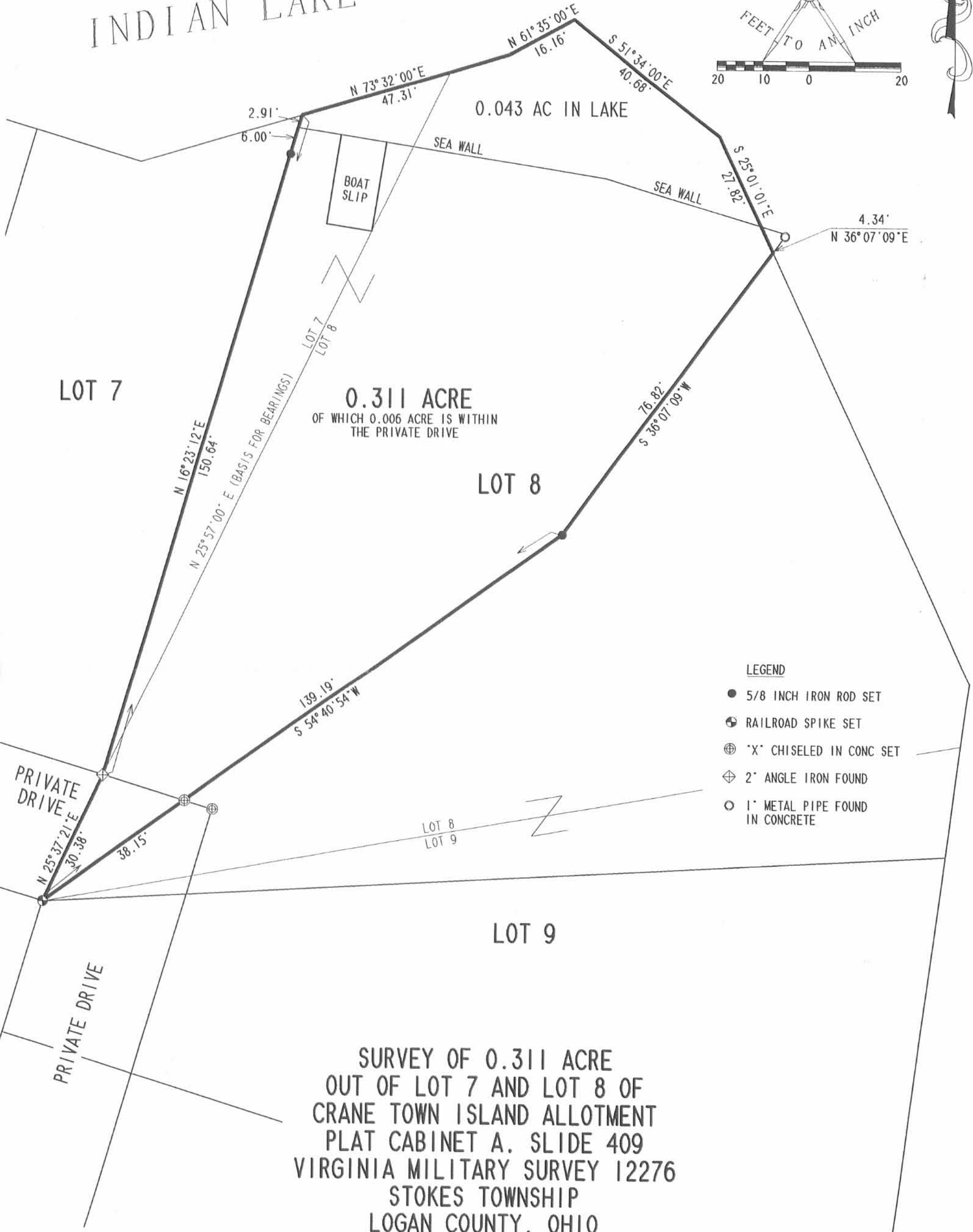
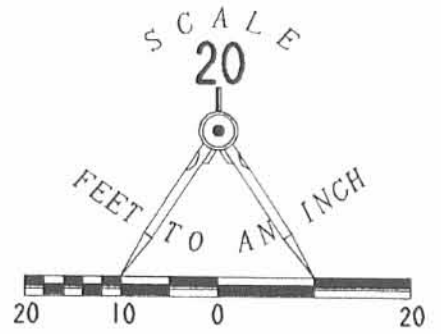
Jeffrey I. Lee
Jeffrey I. Lee
Professional Survey 6359
August 29, 1997



ORIGINAL STAMP IN GREEN

INDEXED ON MAP
5672 LD

INDIAN LAKE



**SURVEY OF 0.311 ACRE
OUT OF LOT 7 AND LOT 8 OF
CRANE TOWN ISLAND ALLOTMENT
PLAT CABINET A. SLIDE 409
VIRGINIA MILITARY SURVEY 12276
STOKES TOWNSHIP
LOGAN COUNTY, OHIO**

REFERENCES
LOGAN COUNTY ENGINEER'S FILES:
PLAT CABINET A. SLIDE 409
J-165

2 WORKING DAYS
BEFORE YOU DIG
CALL TOLL FREE **800-362-2764**
OHIO UTILITIES PROTECTION SERVICE.

INDEXED ON MAP
5672 2P



ORIGINAL STAMP IN GREEN

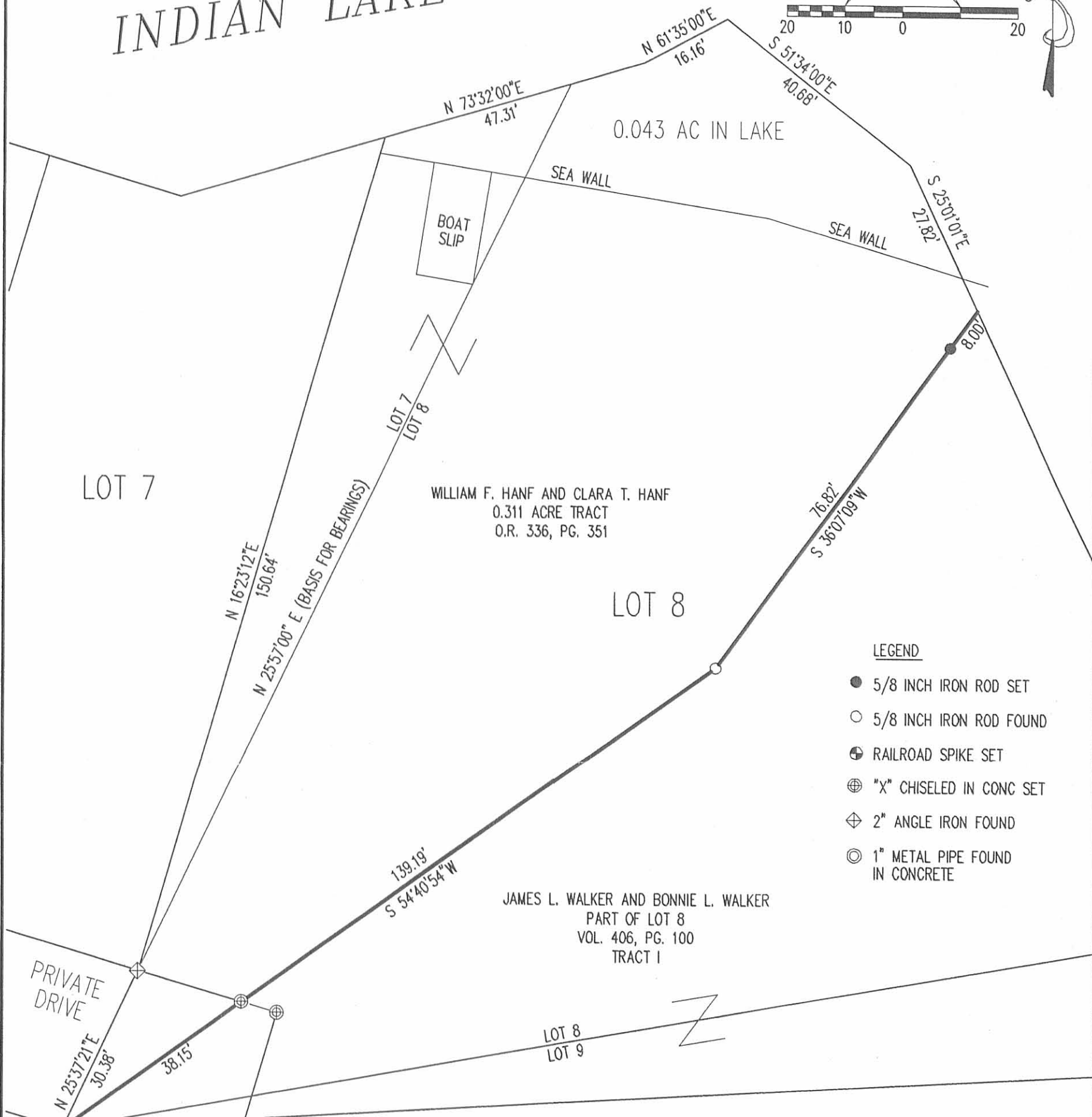
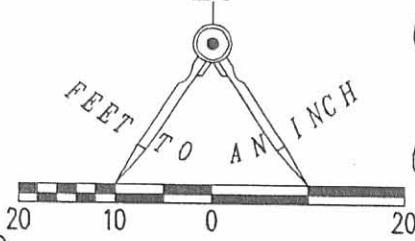
SURVEYED BY:
Jeffrey T. Lee
JEFFREY T. LEE
PROFESSIONAL SURVEYOR 6359
AUGUST 21, 1997

COPYRIGHT 1997 BY:
LEE SURVEYING & MAPPING CO., INC.
117 North Madriver Street
BELLEFONTAINE, OHIO 43311
(937) 593-7335

REC'D 7-24-07 SWY OK

INDIAN LAKE

SCALE
20



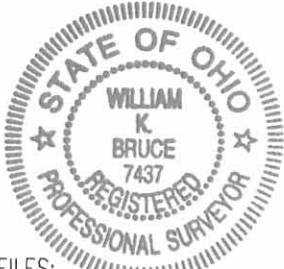
LEGEND

- 5/8 INCH IRON ROD SET
- 5/8 INCH IRON ROD FOUND
- ⊕ RAILROAD SPIKE SET
- ⊗ "X" CHISELED IN CONC SET
- ⊕ 2" ANGLE IRON FOUND
- ⊙ 1" METAL PIPE FOUND IN CONCRETE

A PARTIAL SURVEY OF
 PART OF LOT 7 AND LOT 8
 CRANE TOWN ISLAND ALLOTMENT
 PLAT CABINET A, SLIDE 409
 VIRGINIA MILITARY SURVEY 12276
 STOKES TOWNSHIP
 LOGAN COUNTY, OHIO

SURVEYED BY:

William K. Bruce
 WILLIAM K. BRUCE
 PROFESSIONAL SURVEYOR 7437
 JULY 18, 2007



COPYRIGHT 2007 BY:
LEE SURVEYING & MAPPING CO., INC.
 117 North Madriver Street
 BELLEFONTAINE, OHIO 43311
 (937) 593-7335

INDEXED ON MAP
 5672 3P

2 WORKING DAYS
BEFORE YOU DIG
 CALL TOLL FREE **800-362-2764**
 OHIO UTILITIES PROTECTION SERVICE

REFERENCES
 LOGAN COUNTY ENGINEER'S FILES:
 PLAT CABINET A, SLIDE 409 ORIGINAL STAMP IN GREEN
 J-165