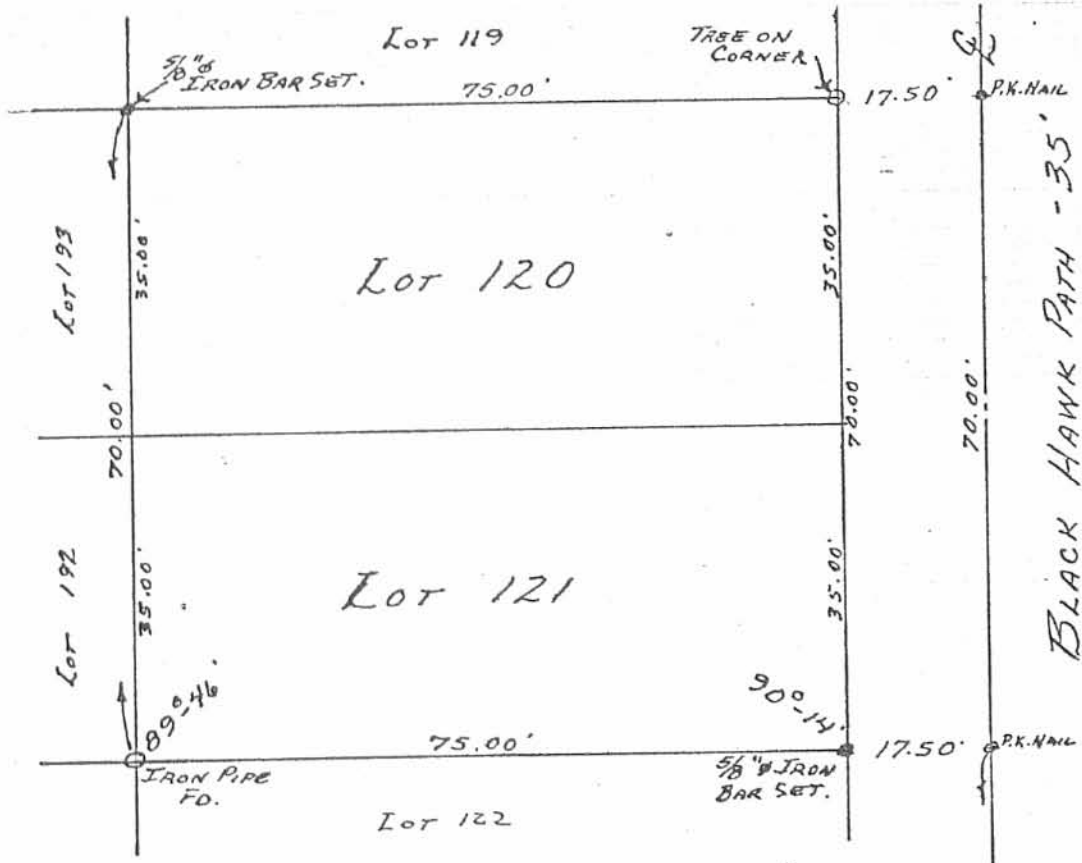


N



REFERENCE:

CHIPPEWA PARK No. 1
 PLAT BOOK B Vol. 2 P. 126-127.
 DEED Vol. 359 P. 779 (7-22-75)

402.50'
 BROWN
 SCALE

5889 1P

INDEXED ON MAP

SURVEY OF LOTS 120-121
 CHIPPEWA PARK No. 1
 V.M.S. No. 12276
 STOKES TOWNSHIP
 LOGAN COUNTY, OHIO
 MARCH 6, 1976

SCALE: 1" = 20'

SURVEYED AND PLATED BY:
 DANIEL E. GILBERT, P.S.
 REG. SUR. No. 5402
 1041 N. MAIN ST.
 BELLEFONTAINE, OHIO 43311