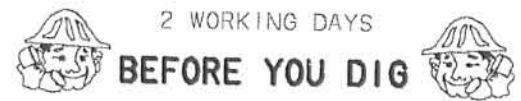


REC'D 9-16-01 SMY OK

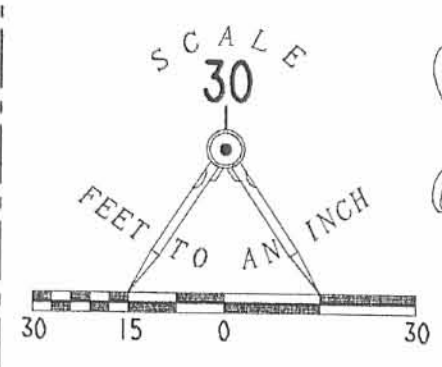


2 WORKING DAYS

BEFORE YOU DIG

CALL TOLL FREE **800-362-2764**

OHIO UTILITIES PROTECTION SERVICE.



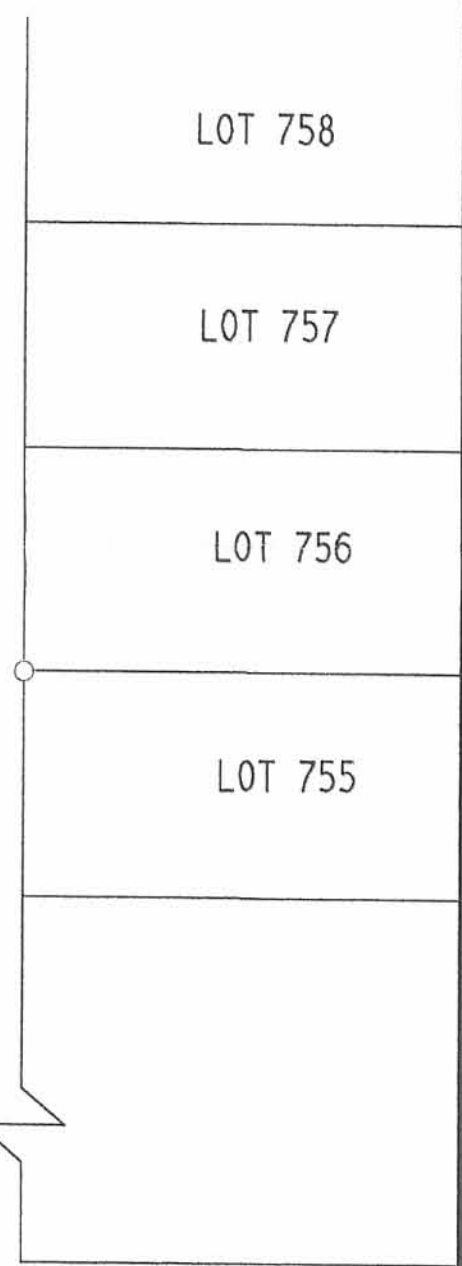
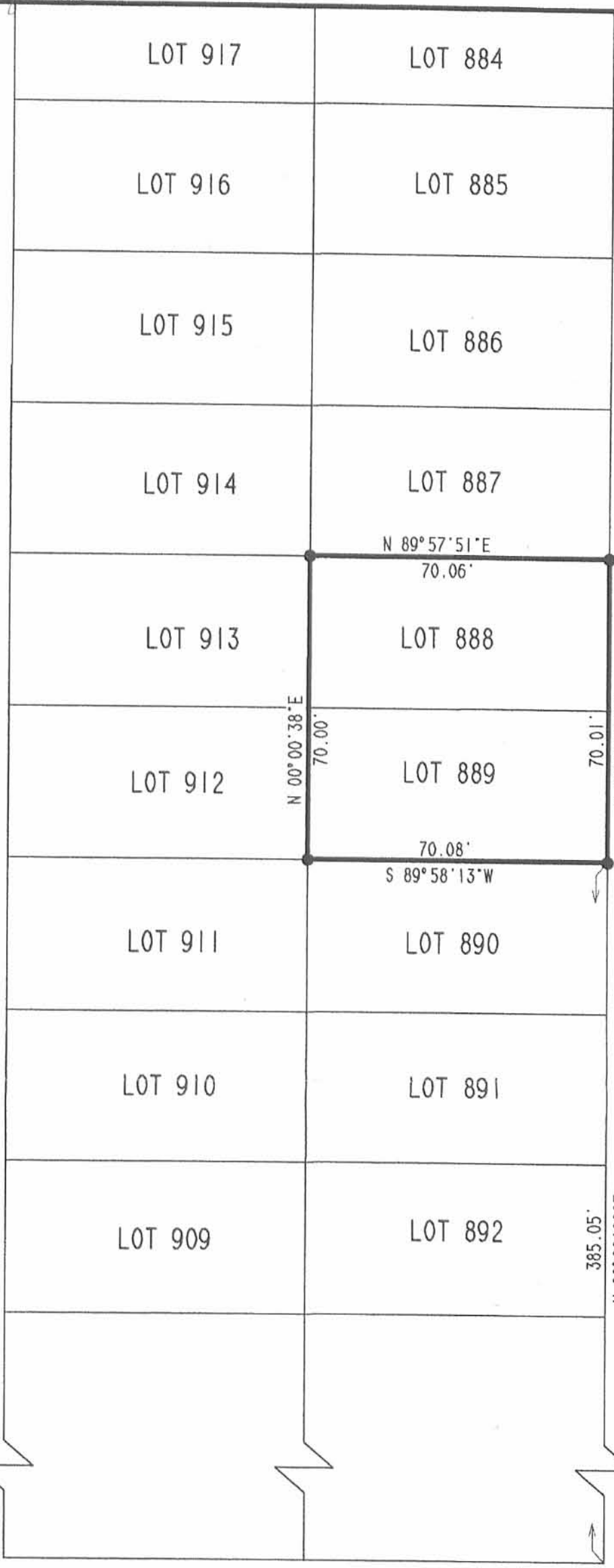
LEGEND

- 5/8 INCH IRON ROD SET
- 5/8 INCH IRON ROD FOUND
- 2 INCH IRON PIPE FOUND

MOHAWK PATH (35')

CHEROKEE PATH (35')

SEMINOLE PATH (35')



ORIGINAL STAMP IN GREEN

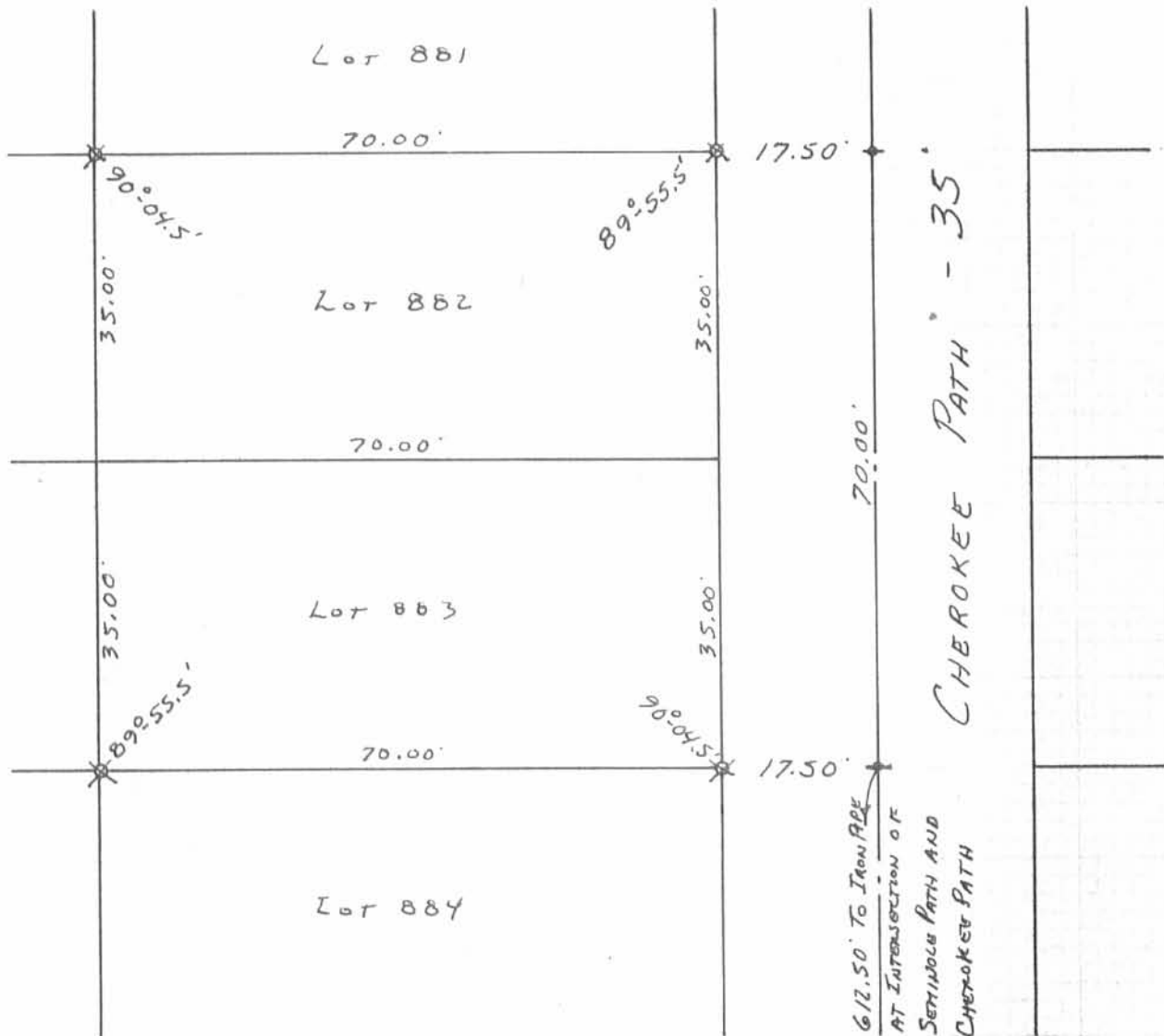
RETRACEMENT SURVEY OF
 LOTS 888 AND 889 OF
 CHIPPEWA PARK ALLOTMENT NO. 1
 PLAT CABINET A. SLIDE 223
 VIRGINIA MILITARY SURVEY 12276
 STOKES TOWNSHIP
 LOGAN COUNTY, OHIO

SURVEYED BY:

Jeffrey I. Lee
 JEFFREY I. LEE
 PROFESSIONAL SURVEYOR 6359
 AUGUST 28, 2001
 REVISED SEPTEMBER 6, 2001

COPYRIGHT 2001 BY:
 LEE SURVEYING & MAPPING CO., INC.
 117 North Madriver Street
 BELLEFONTAINE, OHIO 43311
 (937) 593-7335

INDEXED ON MAP
 6293 1P



✕ - 5/8" ϕ IRON BARS SET.
 ◊ - BRIDGE SPIKES SET.

6293 2P

INDEXED ON MAP

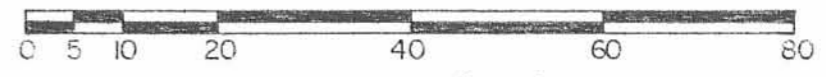
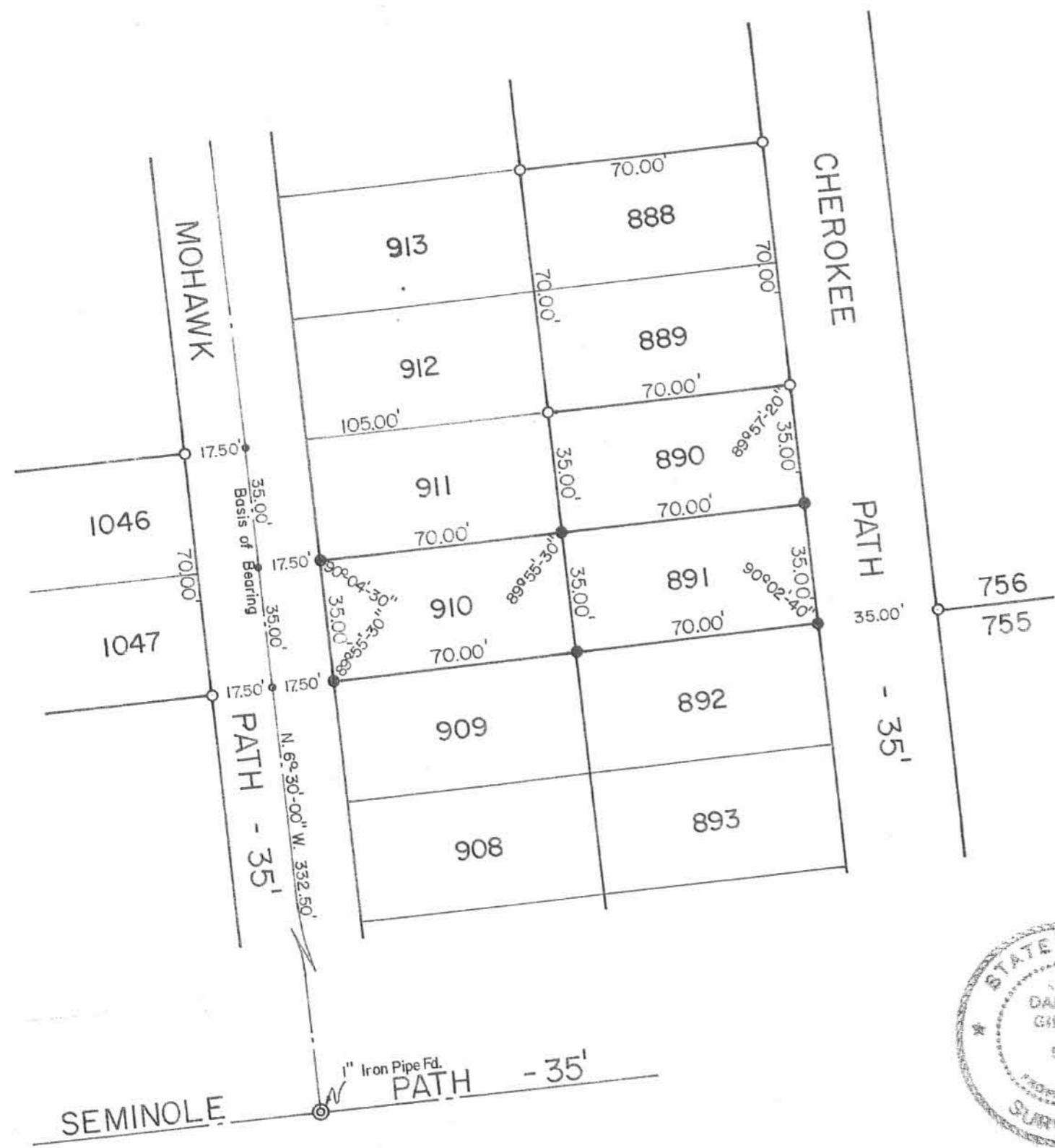
ARMBRUST SURVEY
 LOT NO.'S 882-883
 CHIPPEWA PARK No. 1
 STOKES TOWNSHIP
 LOGAN COUNTY, OHIO
 APRIL 28, 1979

SCALE: 1" = 20'

SURVEYED AND PLATTED BY:
 DANIEL E. GILBERT, P.S.
 REG. SUR. NO. 5402
 1041 N. MAIN ST.
 BELLEFONTAINE, OHIO 43311

REV'D 10-11-01 SAM OK

MAP ROOM



Scale: 1" = 20'

- SYMBOLS:
- - P. K. Nails Set.
 - - 5/8" Rebars Fd.
 - - 5/8" x 30" Rebars Set. (Capped).

Reference:
Chippewa Park No. 1.
Plat Cab. A Slide 221-223.



Survey of Lots No. 890, 891 & 910
Chippewa Park No. 1, V. M.S. No. 12276,
Stokes Township, Logan County, Ohio.

SCALE: 1" = 20'	APPROVED BY:	DRAWN BY DEG
DATE: 9-15-2001		REVISED

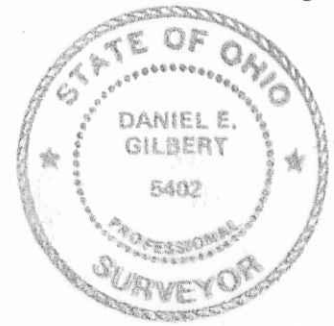
Daniel E. Gilbert
Daniel E. Gilbert, P.S.
Reg. Sur. No. 5402

DRAWING NUMBER
2001-033

INDEXED ON MAP
62933P



Scale: 1" = 40'



SYMBOLS:

- - P. K. Nails Set.
- - 5/8" Rebars Fd.
- - 5/8" x 30" Rebars Set.
- - 1/2" Iron Bars Fd.

Reference: Chippewa Park No. 1 - Plat Cab. A Slides 221-223.

Survey of Lots No. 918 thru 926, Inclusive.
Chippewa Park No. 1, Stokes Township,
Logan County, Ohio.

SCALE: 1" = 40'	APPROVED BY:	DRAWN BY: DEG
DATE: 4-19-2000		REVISED:

Daniel E. Gilbert
Daniel E. Gilbert, P.S.
Reg. Sur. No. 5402

DRAWING NUMBER
2000-017

S-474