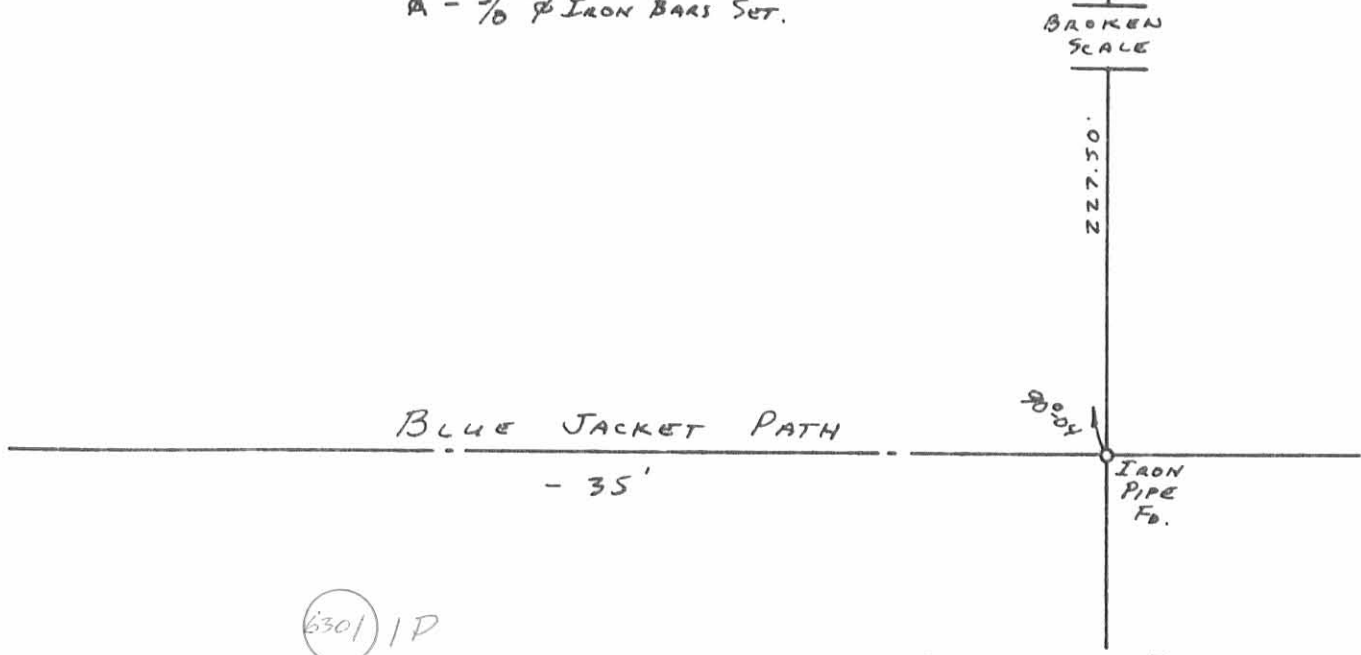


X - 5/8" ϕ IRON BARS SET.



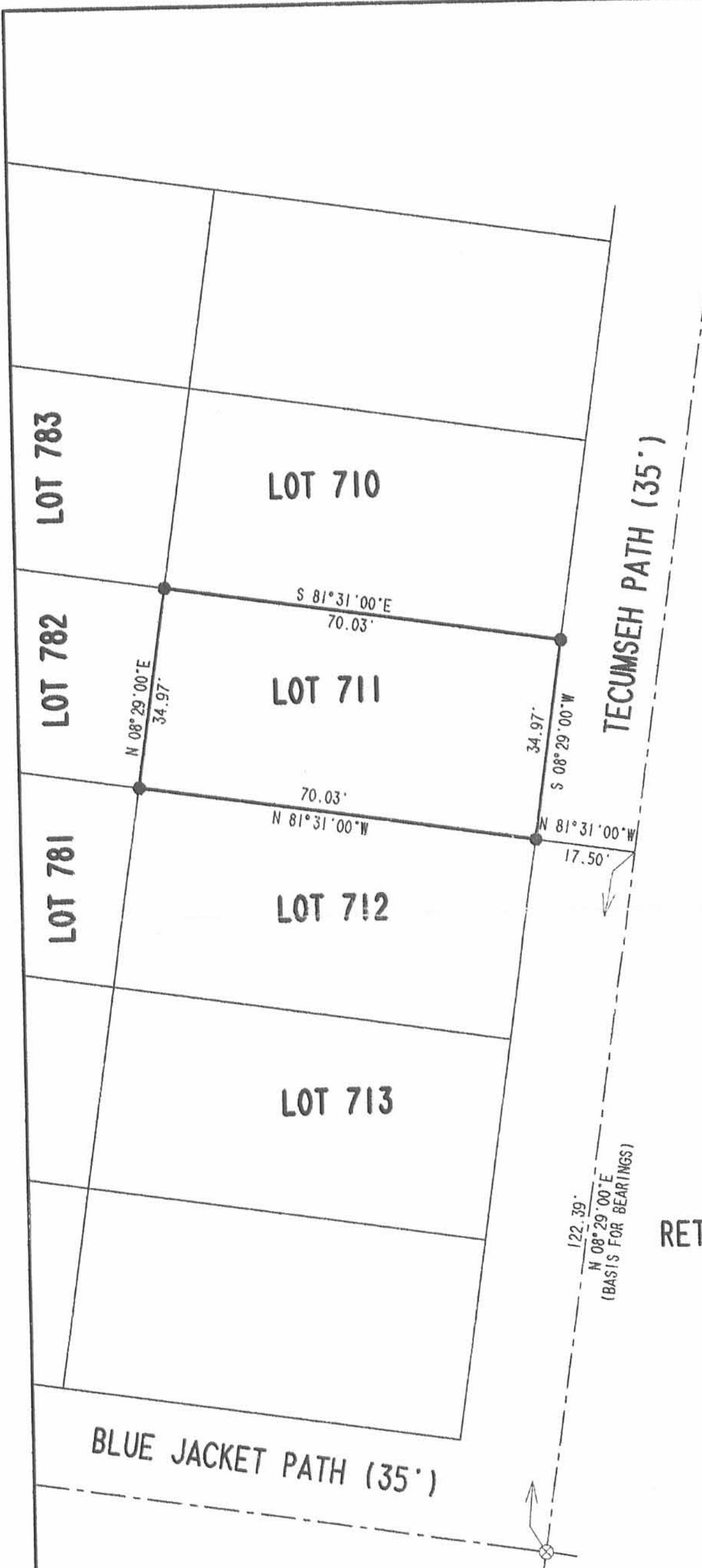
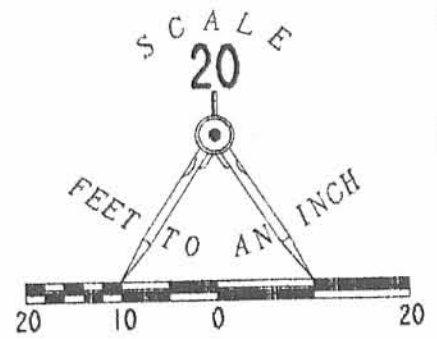
(6301) 1D

INDEXED ON MAP

SURVEY OF LOTS 705, 706, 707
 CHIPPEWA PARK No. 1
 STOKES TOWNSHIP
 LOGAN COUNTY, OHIO
 MAY 19, 1979

SCALE: 1" = 40'

SURVEYED AND PLATTED BY:
 DANIEL E. GILBERT, P.S.
 REG. SUR. No. 5402
 1041 N. MAIN ST.
 BELLEFONTAINE, OHIO 43311



LEGEND

- 5/8 INCH IRON ROD SET
- ⊗ RAIL ROAD SPIKE FOUND

RETRACEMENT SURVEY OF THE
 JERI AND ED MIRACLE
 LOT 711
 CHIPPEWA PARK NO. 1
 STOKES TOWNSHIP
 LOGAN COUNTY, OHIO

SURVEYED BY:

Jeffrey I. Lee
 JEFFREY I. LEE
 PROFESSIONAL SURVEYOR 6359
 DECEMBER 5, 2002



ORIGINAL STAMP IN GREEN

COPYRIGHT 2002 BY:
 LEE SURVEYING & MAPPING CO., INC.
 117 North Madriver Street
 BELLEFONTAINE, OHIO 43311
 (937) 593-7335

D 410

L-3488

L-3488-3

2 WORKING DAYS
BEFORE YOU DIG
 CALL TOLL FREE **800-362-2764**
 OHIO UTILITIES PROTECTION SERVICE.

2P

INDEXED ON MAP

6301