

SOUTH WALNUT ISLAND  
V.M.S. 13393  
STOKES TOWNSHIP  
JULY 4, 1966

TRACT 1

G. Parker Kennedy

The following described real estate situated in Stokes Township, Logan County, Ohio and being part of Virginia Military Survey 13393 and also being part of South Walnut Island and more particularly described as follows:

Beginning at a point in the shore line of Indian Lake at the southeast corner of U.C. Felty's 0.37 acre tract; thence with said Felty's east line N.11° 04' W. 231.0 feet to an iron bar at the northeast corner of said Felty's tract, passing an iron bar at 13.0 feet; thence S.85° 34'E. 105.0 feet to the shore line of Indian Lake, passing an iron bar at 100.0 feet; thence with said shore line S.7° 09'E. 170.1 feet; thence continuing with said shore line S.58° 34'W. <sup>95.5'</sup>~~81.4~~ feet to the place of beginning.

Containing 0.44 of an acre more or less.

The above described tract designated tract No. 1 on the plat of the survey of South Walnut Island made by Dan L. Dodson, Reg. Surveyor No. 4270, in July 1966.

Logan County Engineers File No. -----

INDEXED ON MAP  
6525 10-1

SOUTH WALNUT ISLAND  
V.M.S. 13393  
STOKES TOWNSHIP  
JULY 4, 1966

TRACT 2

U.C. Felty

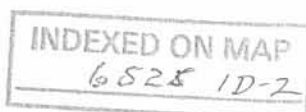
The following described real estate situated in Stokes Township, Logan County, Ohio and being part of Virginia Military Survey 13393 and also being part of South Walnut Island and more particularly described as follows:

Beginning at a point in the shore line of Indian Lake at the southwest corner of G. Parker Kennedy's 0.44 acre tract; thence with said shore line S.80° 39'W. 82.9 feet to the southeast corner of Phillip F. Boyd's 0.36 acre tract; thence with said Boyd's east line N.3° 43'W. 244.9 feet to a chiseled cross in a concrete walk at the northeast corner of said Boyd's tract, passing a chiseled cross in a concrete walk at 13.0 feet; thence S.85° 34'E. 53.5 feet to an iron bar at the northwest corner of said Kennedy's 0.44 acre tract; thence with said Kennedy's west line S.11° 04'E. 231.0 feet to the place of beginning, passing an iron bar at 218.0 feet.

Containing 0.37 of an acre more or less.

The above described tract designated tract No.2 on the plat of the survey of South Walnut Island made by Dan L. Dodson, Reg. Surveyor No.4270 in July, 1966.

Logan County Engineers File No. \_\_\_\_\_



SOUTH WALNUT ISLAND  
V.M.S. 13393  
STOKES TOWNSHIP  
JULY 4, 1966

TRACT 3

Phillip F. Boyd

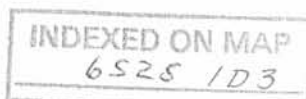
The following described real estate situated in Stokes Township, Logan County, Ohio and being part of Virginia Military Survey 13393 and also being part of South Walnut Island and more particularly described as follows:

Beginning at a point in the shore line of Indian Lake at the southwest corner of U.C. Felty's 0.37 acre tract; thence with said shore line S.87° 59'W. 89.8 feet to the southeast corner of E.P. Webb's 0.37 acre tract; thence with said Webb's east line N.8° 11'E. 253.0 feet to an iron bar at the northeast corner of said Webb's tract; thence S.85°34'E. 38.0 feet to a chiseled cross in a concrete walk at the northwest corner of said Felty's 0.37 acre tract; thence with said Felty's west line S.3° 43'E. 244.9 feet to the place of beginning, passing a chiseled cross in a concrete walk at <sup>231.9</sup>~~213.9~~ feet.

Containing 0.36 of an acre more or less.

The above described tract designated tract No.3 on the plat of the survey of South Walnut Island made by Dan L. Dodson, Reg. Surveyor No.4270 in July, 1966.

Logan County Engineers File No. \_\_\_\_\_



SOUTH WALNUT ISLAND  
V.M.S. 13393  
STOKES TOWNSHIP  
JULY 4, 1966

TRACT 4

E.P. Webb

The following described real estate situated in Stokes Township, Logan County, Ohio and being part of Virginia Military Survey 13393 and also being part of South Walnut Island and more particularly described as follows:

Beginning at a point in the shore line of Indian Lake at the southwest corner of Phillip F. Boyd's 0.36 acre tract; thence with said shore line N.82° 06'W. 93.6 feet to the southeast corner of Kenneth E. Miller's 0.70 acre tract; thence with said Miller's east line N.21° 26'E. 258.1 feet to an iron bar at the northeast corner of said Miller's tract, passing an iron bar at 20.0 feet; thence S.85° 34'E. 34.5 feet to an iron bar at the northwest corner of said Boyd's 0.36 acre tract; thence with said Boyd's west line S.8° 11'W. 253.0 feet to the place of beginning, passing an iron bar at 242.0 feet.

Containing 0.37 of an acre more or less.

The above described tract designated tract No.4 on the plat of the survey of South Walnut Island made by Dan L. Dodson, Reg. Surveyor No.4270 in July, 1966  
Logan County Engineers File No. \_\_\_\_\_

INDEXED ON MAP  
6525 1D4

SOUTH WALNUT ISLAND  
V.M.S. 13393  
STOKES TOWNSHIP  
JULY 4, 1966

TRACT 5

Kenneth E. Miller

The following described real estate situated in Stokes Township, Logan County, Ohio and being part of Virginia Military Survey 13393 and also being part of South Walnut Island and more particularly described as follows:

Beginning at a point in the shore line of Indian Lake at the southwest corner of E.P. Webb's 0.37 acre tract; thence with said shore line N.46° 51'W.  $\frac{163.5}{132.6}$  feet; thence continuing with said shore line N.23° 30'E.  $\frac{153.0}{122.9}$  feet to a point; thence S.85° 34'E. 153.0 feet to an iron bar at the northwest corner of said E.P. Webb's 0.37 acre tract, passing an iron bar at 53.0 feet; thence with said Webb's west line S.21° 26'W. 258.1 feet to the place of beginning, passing an iron bar at 238.1 feet.

Containing 0.70 of an acre more or less.

The above described tract designated tract No.5 on the plat of the survey of South Walnut Island made by Dan L. Dodson, Reg. Surveyor No. 4270 in July, 1966.  
Logan County Engineers File No. -----

INDEXED ON MAP

6525 1D-5

SOUTH WALNUT ISLAND  
V.M.S. 13393  
STOKES TOWNSHIP  
JULY 4, 1966

TRACT 6

The following described real estate situated in Stokes Township, Logan County, Ohio and being part of Virginia Military Survey 13393 and also being part of South Walnut Island and more particularly described as follows:

Beginning at a point in the shore line of Indian Lake at the northwest corner of Kenneth E. Miller's 0.70 acre tract; thence with said shore line N.4° 51'E. <sup>130.4'</sup>~~94.4~~ feet; thence continuing with said shore line S.73° 15'E. 175.6 feet to a point; thence S.4° 26'W. 93.0 feet to an iron bar in the north line of E.P. Webb's 0.37 acre tract, passing an iron bar at 13.0 feet; thence with said Webb's north line N.85° 34'W. 19.5 feet to an iron bar at the northwest corner of said tract and at the northeast corner of said Kenneth E. Miller's 0.70 acre tract; thence with said Miller's north line N.85° 34'W. 153.0 feet to the place of beginning, passing an iron bar at 100.0 feet.

Containing 0.44 of an acre more or less.

The above described tract designated tract No.6 on the plat of the survey of South Walnut Island made by Dan L. Dodson, Reg. Surveyor No. 4270 in july, 1966  
Logan County Engineers File No. -----

INDEXED ON MAP  
6525 1D6

SOUTH WALNUT ISLAND  
V.M.S. 13393  
STOKES TOWNSHIP  
JULY 4, 1966

TRACT 7

The following described real estate situated in Stokes Township, Logan County, Ohio and being part of Virginia Military Survey 13393 and also being part of South Walnut Island and more particularly described as follows:

Beginning at an iron bar in the north line of U.C. Felty's 0.37 acre tract, N.85° 34'W. 20.0 feet from said Felty's northeast corner; thence with said Felty's north line and the north line of Phillip F. Boyd's 0.36 acre tract and the north line of E.P. Webb's 0.37 acre tract, N.85° 34'W. 86.5 feet to an iron bar, passing an iron bar at said Webb's northeast corner at 71.5 feet; thence N.4° 26'E. 93.0 feet to a point in the shore line of Indian Lake, passing an iron bar at 80.0 feet; thence with said shore line N.80° 10'E. 39.3 feet to a point; thence S.4° 26'W. 115.0 feet to the place of beginning, passing an iron bar at 25.0 feet.

Containing 0.21 of an acre more or less.

The above described tract designated tract No.7 on the plat of the survey of South Walnut Island made by Dan L. Dodson, Reg. Surveyor No. 4270 in July, 1966.  
Logan County Engineers File No. -----

INDEXED ON MAP  
6525 107

SOUTH WALNUT ISLAND  
V.M.S. 13393  
STOKES TOWNSHIP  
JULY 4, 1966

TRACT 8

The following described real estate situated in Stokes Township, Logan County, Ohio and being part of Virginia Military Survey 13393 and also being part of South Walnut Island and more particularly described as follows:

Beginning at a point in the shore line of Indian Lake at the northeast corner of G. Parker Kennedy's 0.44 acre tract; thence with said Kennedy's north line  $N.85^{\circ} 34'W.$  105.0 feet to an iron bar at the northwest corner of said tract and at the northeast corner of U.C. Felty's 0.37 acre tract, passing an iron bar at 5.0 feet; thence with said Felty's north line  $N.85^{\circ} 34'W.$  20.0 feet to an iron bar; thence  $N.4^{\circ} 26'E.$  115.0 feet to a point in the shore line of Indian Lake, passing an iron bar at 90.0 feet; thence with said shore line  $N.81^{\circ} 20'E.$  99.5 feet to a point; thence continuing with said shore line  $S.56^{\circ} 27'E.$  40.4 feet to a point; thence continuing with said shore line  $S.7^{\circ} 55'W.$  118.1 feet to the place of beginning.

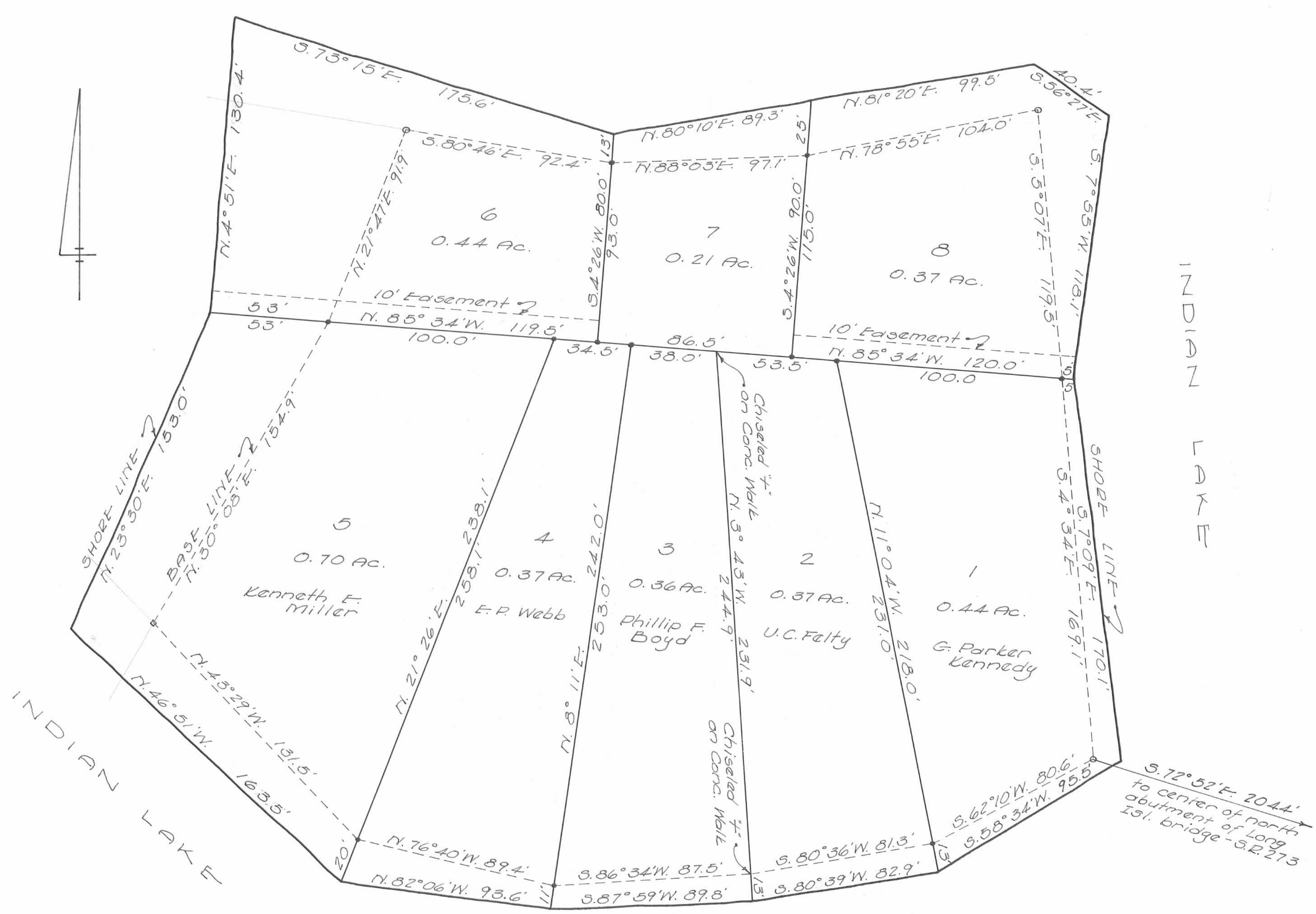
Containing 0.37 of an acre more or less.

The above described tract designated tract No. 8 on the plat of the survey of South Walnut Island made by Dan L. Dodson, Reg. Surveyor No. 4270 in July, 1966.

Logan County Engineers File No. \_\_\_\_\_

INDEXED ON MAP  
6525 108





SURVEY OF  
 SOUTH WALNUT ISLAND  
 V.M.S. 13393 STOKES TWP.  
 LOGAN COUNTY, OHIO  
 JULY, 1966  
 SCALE 1"=30'

- = 1/2" Pipe Found
- = 3/4" Bar Set
- = Hub Set

*Dan L. Dodson*  
 Dan L. Dodson  
 Reg. Surveyor 4270  
 Bellefontaine, Ohio