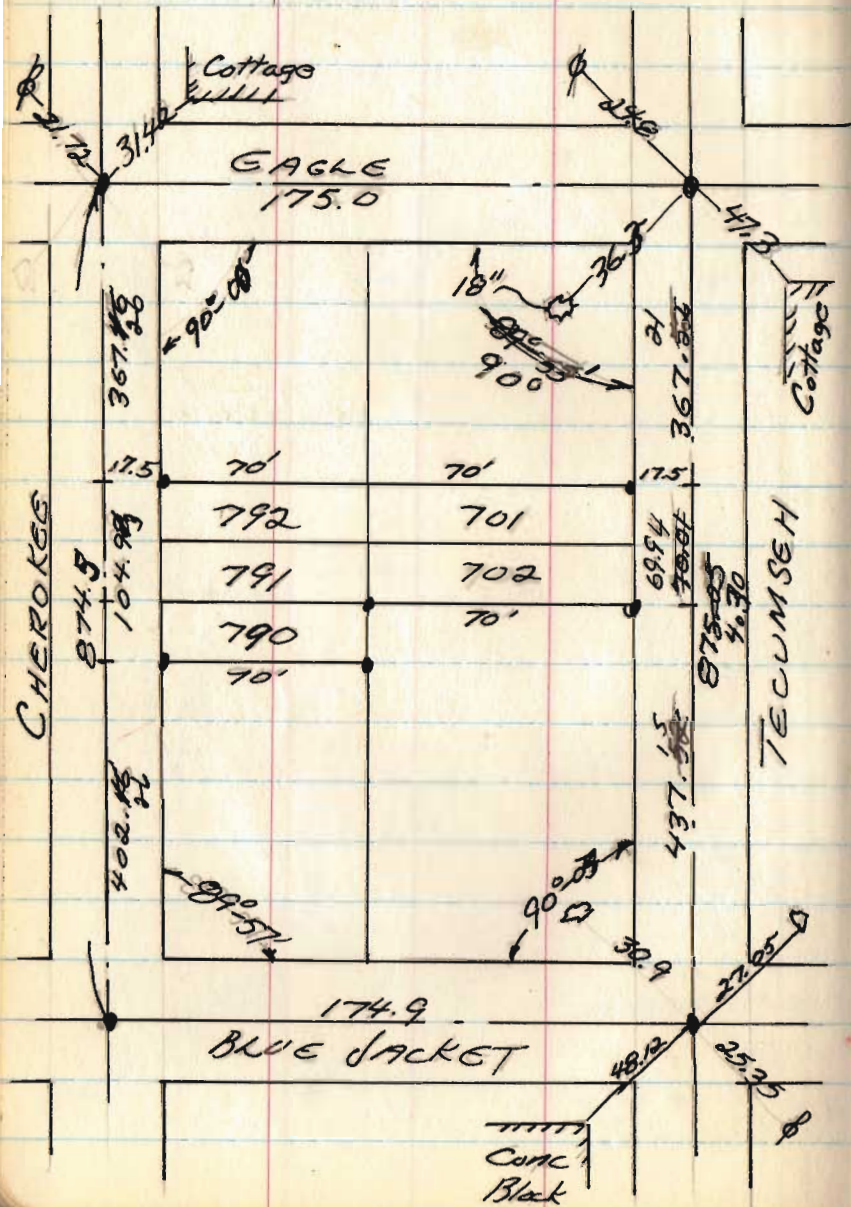


MRS. STEWART
CHIPPAWA PARK

MAR, 69

71



125
7875

6543

0000
875.7000
00

INDEXED ON MAP

367
8
2936

362.5
29
367.31

7
8
0360

89° 57'
90
179° 57'
179° 57'

8-15-18

APPROVED

LEGEND:

- ⊗ RAILROAD SPIKE FOUND
- ⊙ 1 INCH IRON PIPE FOUND
- ⊘ OLD WOOD POSTS FOUND
- 5/8 INCH IRON ROD FOUND
- 5/8 INCH IRON ROD SET WITH PLASTIC I.D. CAP STAMPED "P.S. 8533"

R/W = RIGHT-OF-WAY

C/L = CENTER-LINE

DEED & SURVEY REFERENCES:

O.R. 1300, PG. 391

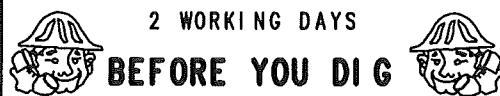
CHIPPEWA PARK NUMBER ONE
PLAT CABINET A, SLIDE 221

LOGAN COUNTY MAP ROOM FILE
NO. 6301

BASIS FOR BEARINGS:

THE BASIS FOR BEARINGS, SHOWN HEREON,
IS AN ASSUMED BEARING FOR THE CENTER-LINE
OF TECUMSEH PATH, BEING S 05°00'00" E.

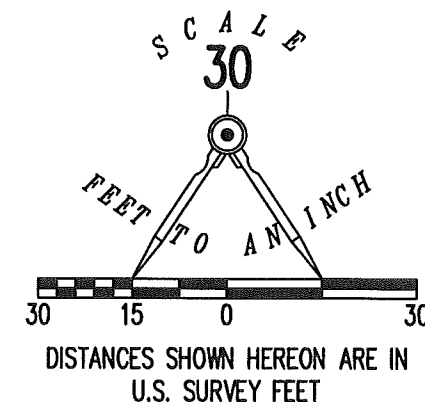
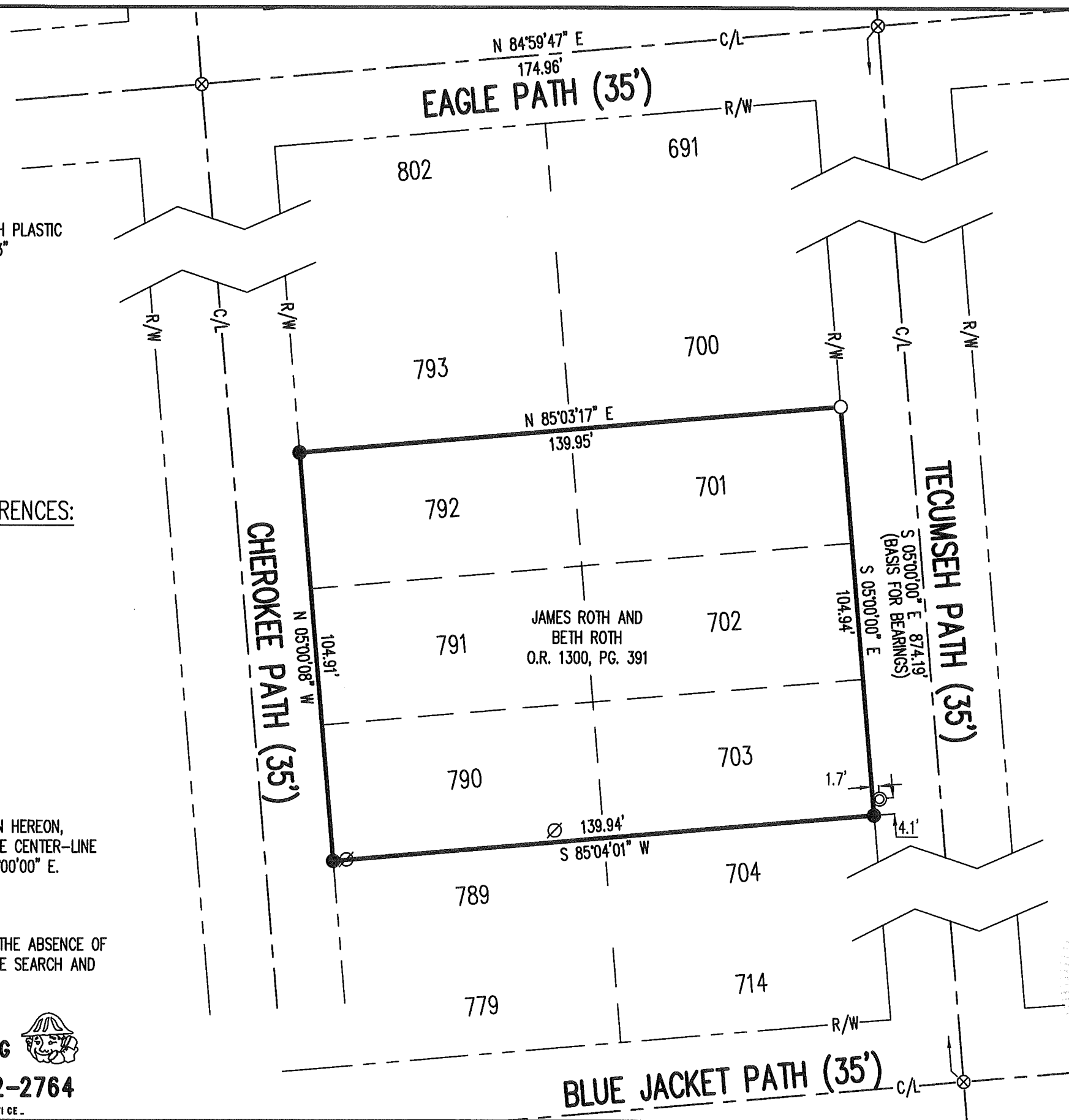
THIS SURVEY WAS PREPARED IN THE ABSENCE OF
A COMPLETE AND ACCURATE TITLE SEARCH AND
DOES NOT GUARANTEE TITLE.



2 WORKING DAYS

CALL TOLL FREE 800-362-2764

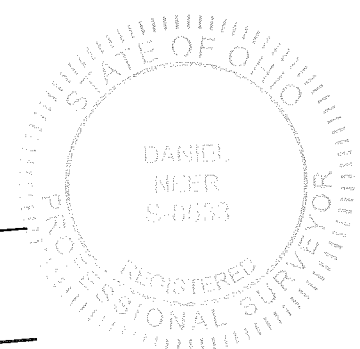
OHIO UTILITIES PROTECTION SERVICE



RETRACEMENT SURVEY OF THE
JAMES ROTH AND BETH ROTH
LOTS 701, 702, 703, 790, 791 & 792
CHIPPEWA PARK NUMBER ONE
PLAT CABINET A, SLIDE 221
OFFICIAL RECORD 1300, PAGE 391
STOKES TOWNSHIP
LOGAN COUNTY, OHIO

SURVEYED BY:

D. A. Neer
DANIEL A. NEER
PROFESSIONAL SURVEYOR NO. 8533
AUGUST 3, 2018



COPYRIGHT 2018 BY:
LEE SURVEYING & MAPPING CO.
117 North Madriver Street
BELLEFONTAINE, OHIO 43311
(937) 593-7335
WWW.LEE-SURVEYING.COM
surveys@lee-surveying.com
KSS D0818 64230818 L-6423-3

INDEXED ON MAP
0543