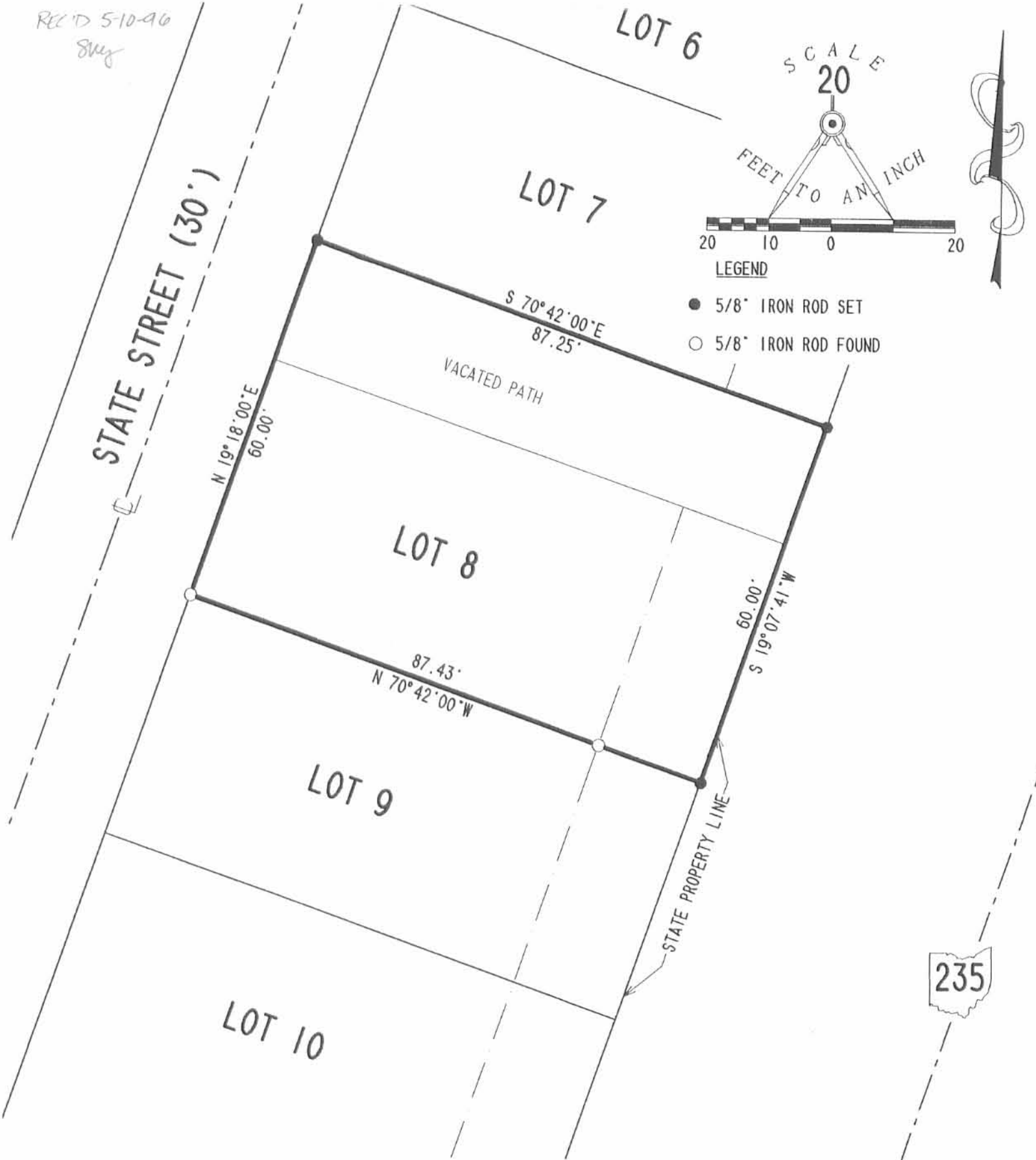


REC'D 5-10-96  
Smy



RETRACEMENT SURVEY OF LOT 8 AND VACATED PATH  
 OF LAKESIDE ALLOTMENT  
 PLAT CABINET A. SLIDE 270 & 271  
 SECTION 27. TOWN 6. RANGE 8  
 STOKES TOWNSHIP  
 LOGAN COUNTY, OHIO

INDEXED ON MAP  
 6730 1P

REFERENCES

LOGAN COUNTY ENGINEER'S FILES:  
 PLAT OF LAKESIDE ALLOTMENT  
 PLAT CAB. A. SLIDE 270 & 271  
 R-2107, R-3174 & R-6730  
 RESOLUTION NO. 168-82

2 WORKING DAYS



**BEFORE YOU DIG**



CALL TOLL FREE **800-362-2764**

OHIO UTILITIES PROTECTION SERVICE.



ORIGINAL STAMP IN GREEN

SURVEYED BY

JEFFREY I. LEE  
 PROFESSIONAL SURVEYOR 6359  
 MAY 5, 1996

COPYRIGHT 1996 BY:

LEE SURVEYING & MAPPING CO., INC.  
 143 East Columbus Avenue  
 BELLEFONTAINE, OHIO 43311  
 (513) 593-7335

D 282 REHAUGHT

L-1403-4