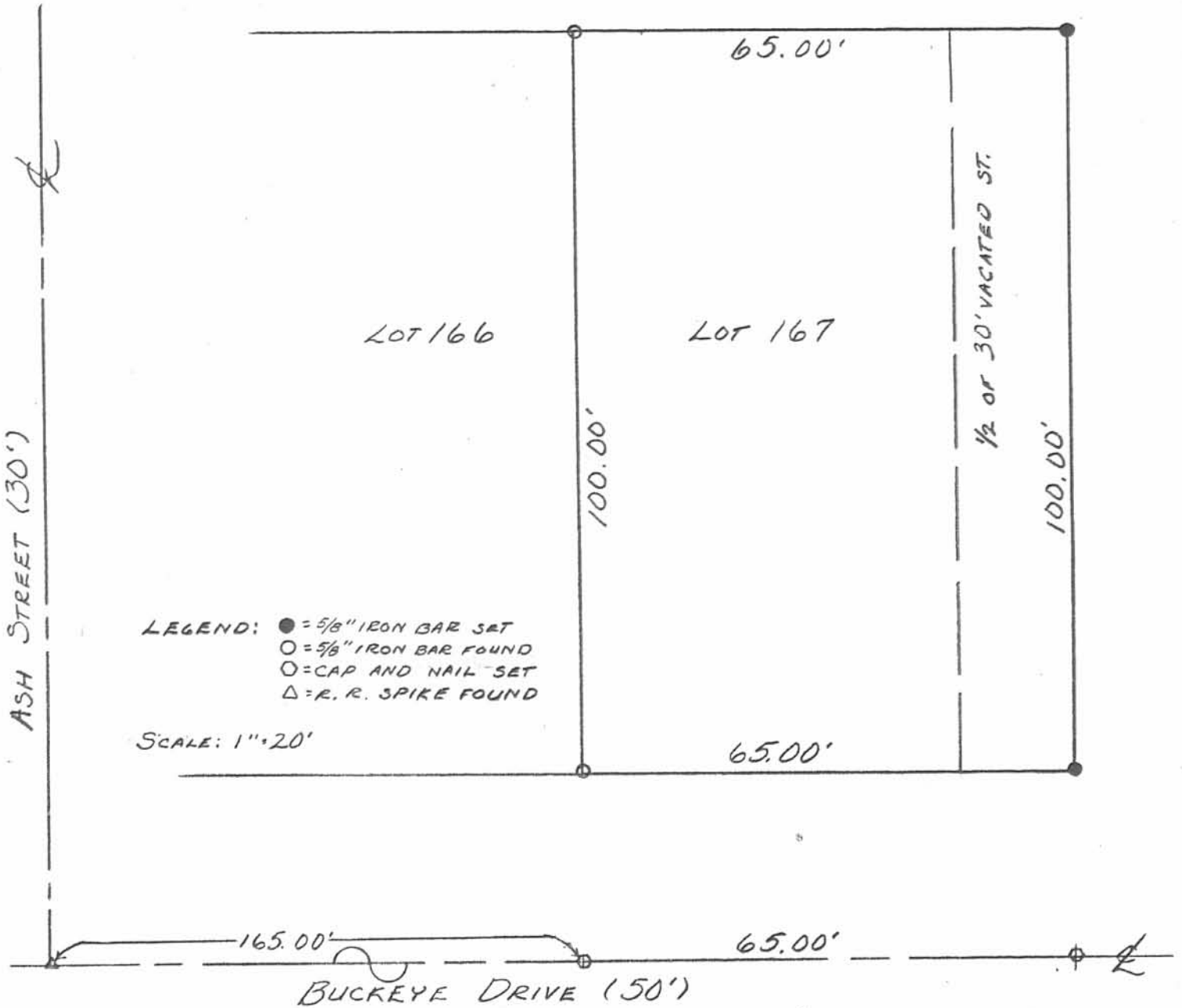
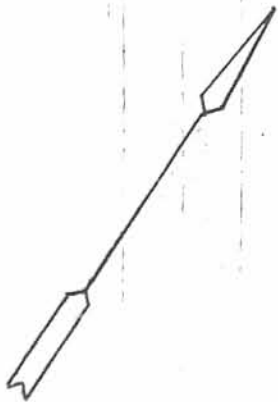


LOT 2 MIDLAKE SUBDIVISION



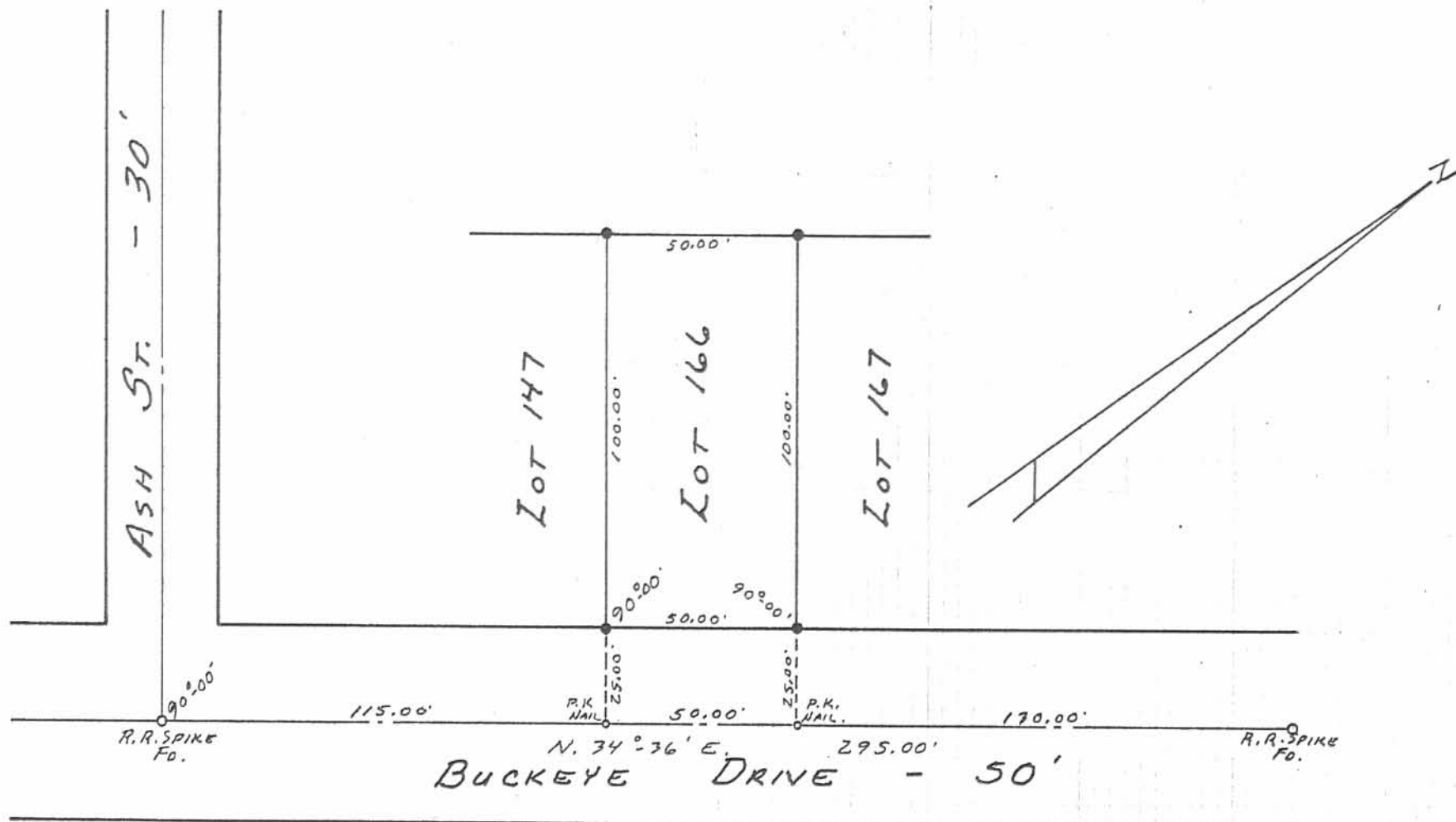
SURVEY OF LOT 167 IN V.M.S. 12276
 TECUMSEH ISLAND, LOGAN COUNTY, OHIO, Stokes Twp
 FOR CHARLES BIRTLE FEBRUARY 28, 1990



INDEXED ON MAP
 682.5

17

Leslie H. Geeslin
 LESLIE H. GEESLIN
 RUSHSVLVANIA, OHIO
 (513) 468-2793



BUCKEYE DRIVE - 50'

● - SET $\frac{3}{8}$ " x 30" REBARS.

NOTE: FOUND VARIOUS IRON BARS
PIPES, ETC NEAR THE CORNERS
OF THIS LOT. SET $\frac{3}{8}$ " x 30" REBARS
ON ALL CORNERS.

6925 2P

SURVEYED AND PLATED BY:
DANIEL E. GILBERT, P.S.
REG. SUR. No. 5402
1041 N. MAIN ST.
BELLEFONTAINE, OHIO 43311

FRAZIER SURVEY
LOT No. 166
TECUMSEH ISLAND
SUBDIVISION
STOKES TOWNSHIP
LOGAN COUNTY, OHIO
MARCH 5, 1983
SCALE: 1" = 40'