

LEGEND

- 1/2" IRON ROD FOUND
- ⊙ 2" PIPE FOUND
- ⊘ 16 PENNY NAIL FOUND

2 WORKING DAYS
BEFORE YOU DIG
 CALL TOLL FREE **800-362-2764**
OHIO UTILITIES PROTECTION SERVICE.

RETRACEMENT SURVEY OF THE
 JAMES R. ELLIS 1.90 ACRE TRACT
 DEED VOLUME 400, PAGE 412
 SECTION 27, TOWN 6 SOUTH, RANGE 8 EAST
 STOKES TOWNSHIP, LOGAN COUNTY, OHIO



SURVEYED BY:
Jeffrey I. Lee
 JEFFREY I. LEE
 PROFESSIONAL SURVEYOR 6359
 JUNE 19, 1993

LEE SURVEYING & MAPPING CO.
 143 East Columbus Avenue
 BELLEFONTAINE, OHIO 43311
 (513) 593-7335

INDEXED ON MAP
 6981

INDEXED ON MAP
 6981 1D

Ammons 2nd Tract Survey Description
June, 1973

Being situated in Stokes Township, Logan County, Ohio; and being a part of Section 27, Town 6 South, Range 8 East.

Beginning at a point in the center of County Road 270 that bears S 19° - 52'E 421.4 feet from the intersection of said County Road 270 with the north line of Section 27 (also Township Road 87).

Thence continuing with the center of County Road 270 S 19° - 52'E 157.5 feet to a point.

Thence East 536.4 feet to a point in the creek, passing thru irons at 31.7 feet and 515.0 feet.

Thence N 3° - 00'W 148.2 feet to a iron.

Thence West 584.0 feet to the place of beginning, passing thru a iron at 552.3 feet.

Containing 1.90 acres more or less. Being surveyed from a 9.12 acre tract.

Owen K. Shirk
Surveyor 4271

6981 20-1

INDEXED ON MAP

Ammons to Wilpe Survey Description

June, 1973

Being situated in Stokes Township, Logan County, Ohio; and being a part of Section 27, Town 6 South, Range 8 East.

Beginning at a point in the center of County Road 270 that bears S 19° - 52'E 578.9 feet from the intersection of said County Road 270 with the north line of Section 27 (also Township Road 87).

Thence continuing with the center of County Road 270 S 19° - 52'E 157.5 feet to a point.

Thence East 488.7 feet to a iron, passing thru a iron at 31.7 feet.

Thence N 3° - 00'W 148.2 feet to a point in the creek.

Thence West 536.4 feet to the place of beginning, passing thru irons at 21.4 feet and 504.7 feet.

Containing 1.74 acres more or less. Being surveyed from a 9.12 acre tract.

Owen K. Shirk
Surveyor 4271

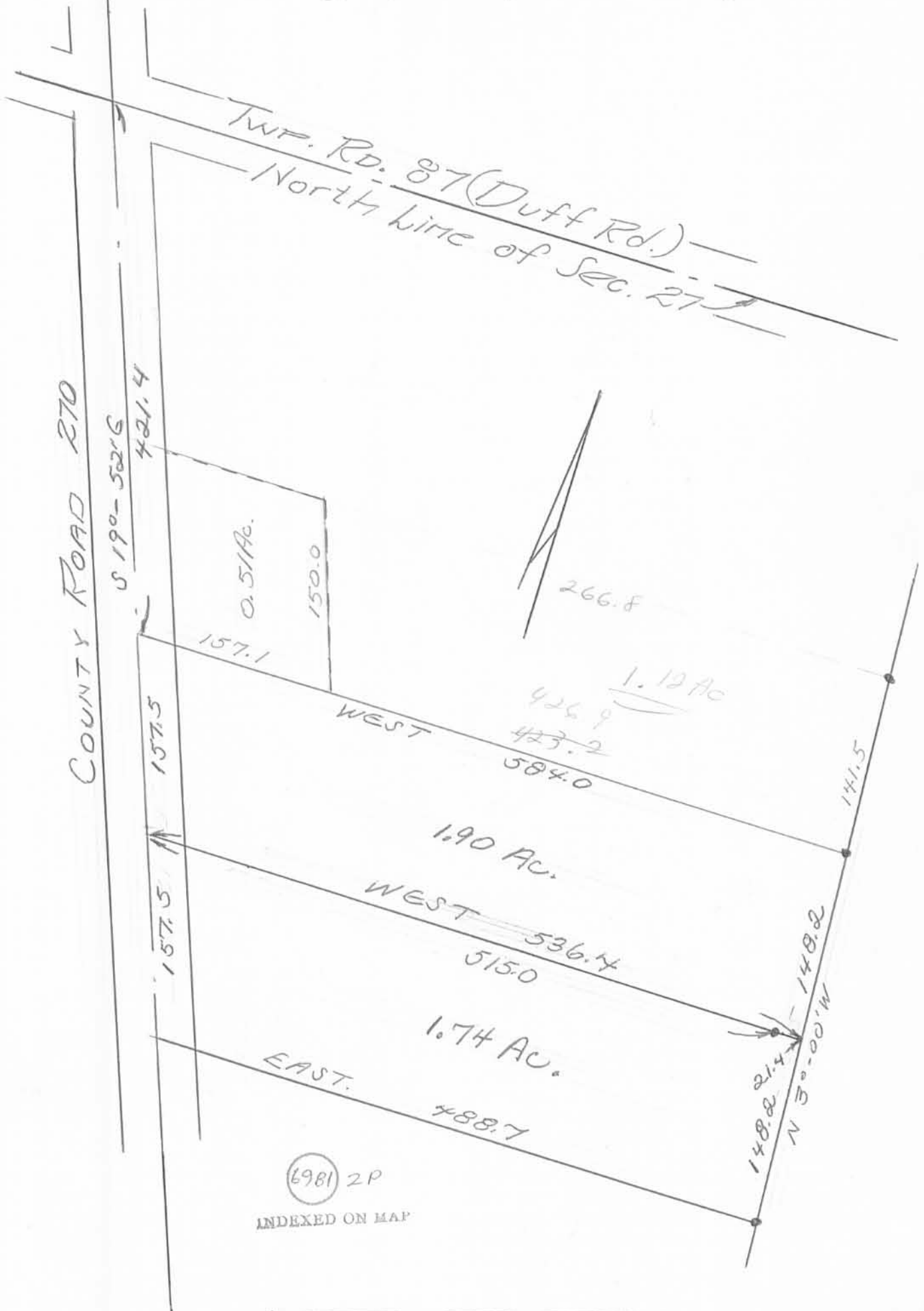
(6981) 2D-2

INDEXED ON MAP

AMMONS SURVEY

STOKES TWP. LOGAN CO., OHIO

SEC. 27, T.6 S.; R.8 E.; 1" = 100'



Owen K. Shirk
Surveyor 4271
June, 1973