

AMMONS to Altick Description

June, 1974

Being situated in Stokes Township, Logan County, Ohio; and being a part of Section 27, Town 6 South, Range 8 East.

Beginning at the intersection of the north line of Section 27 and the center of County Road ~~430~~²⁷⁶.

Thence with the center of County Road ~~430~~²⁷⁶ S 19° - 52'E 271.4 feet to the northwest corner of a 0.51 acre tract.

Thence with the north line of said 0.51 acre tract East 157.1 feet to a iron at the northeast corner of said 0.51 acre tract. Said iron is the true place of beginning for this description.

Thence East 466.8 feet to a iron.

Thence S 3° - 00'E 141.5 feet to a iron.

Thence West 426.9 feet to a iron at the southeast corner of the 0.51 acre tract.

Thence with the east line of the 0.51 acre tract N 19° - 52'W 150.0 feet to the place of beginning.

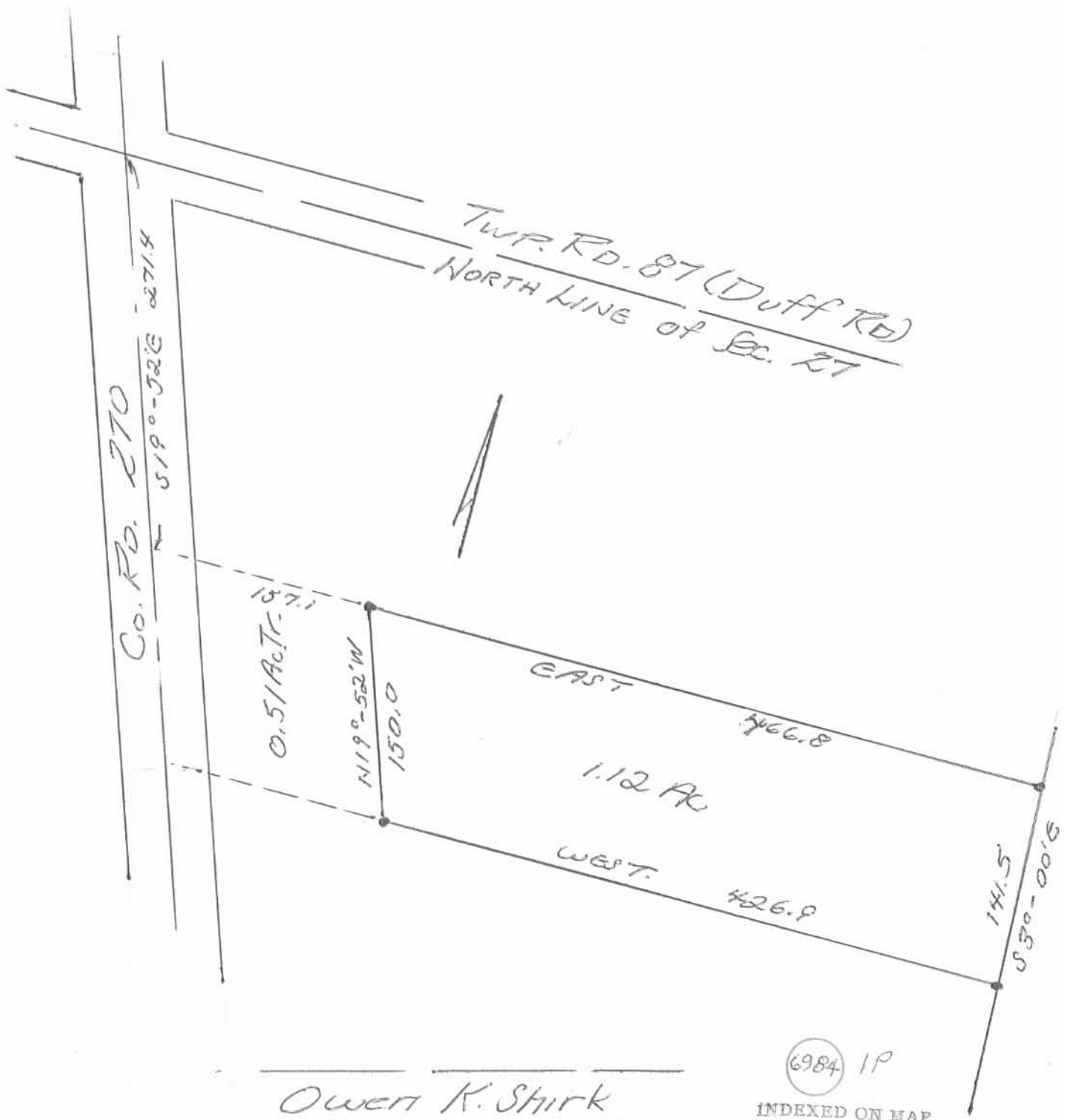
Containing 1.12 acres more or less. Being surveyed from a 4.53 acre tract.

Owen K. Shirk
Surveyor 4271

(6984) 1D

INDEXED ON MAP

AMMONS to ALTICK
STOKES TWP., LOGAN CO., OHIO
SEC. 27, T. 6 S., R. 8 E. 1" = 100'



Owen K. Stirk
Surveyor 4271
June, 1974

6984 1P
INDEXED ON MAP