

FOUND 1" ANGLE IRON

175.03

EAGLE PATH

FOUND 1" ANGLE IRON

NOTE: 0.58' DEFICIENCY IN BLOCK. EACH LOT = 34.976' WIDE

FOUND 1" PIPE
BIG BEAR PATH



SURVEY OF ARMENTROUT
LOTS No. 481, 482, 483, 484
CHIPPEWA PARK No. 1
STOKES TOWNSHIP
LOGAN COUNTY, OHIO



By: *Jeffrey I. Lee*
JEFFREY I. LEE
REG. SURVEYOR No. 6359

MAY 15, 1984

ORIGINAL RETURN GREEN

ORIG. PLAT BK. 'B', VOL. 2, PG. 126, 127 -
DEEDS VOL. 320, PG. 503
(HENDERSON)



SCALE - 1" = 100'

7050 1P

INDEXED ON MAP

FOUND RR. SPIKE

BLUE JACKET PATH

FOUND 1" ANGLE IRON

NOTE: 0.04 EXCESS IN BLOCK.
EACH LOT = 70.02' DEEP

LEE SURVEYING & MAPPING CO.

855 E. Sandusky Ave.
BELLEFONTAINE, OHIO 43311
(513) 593-5780

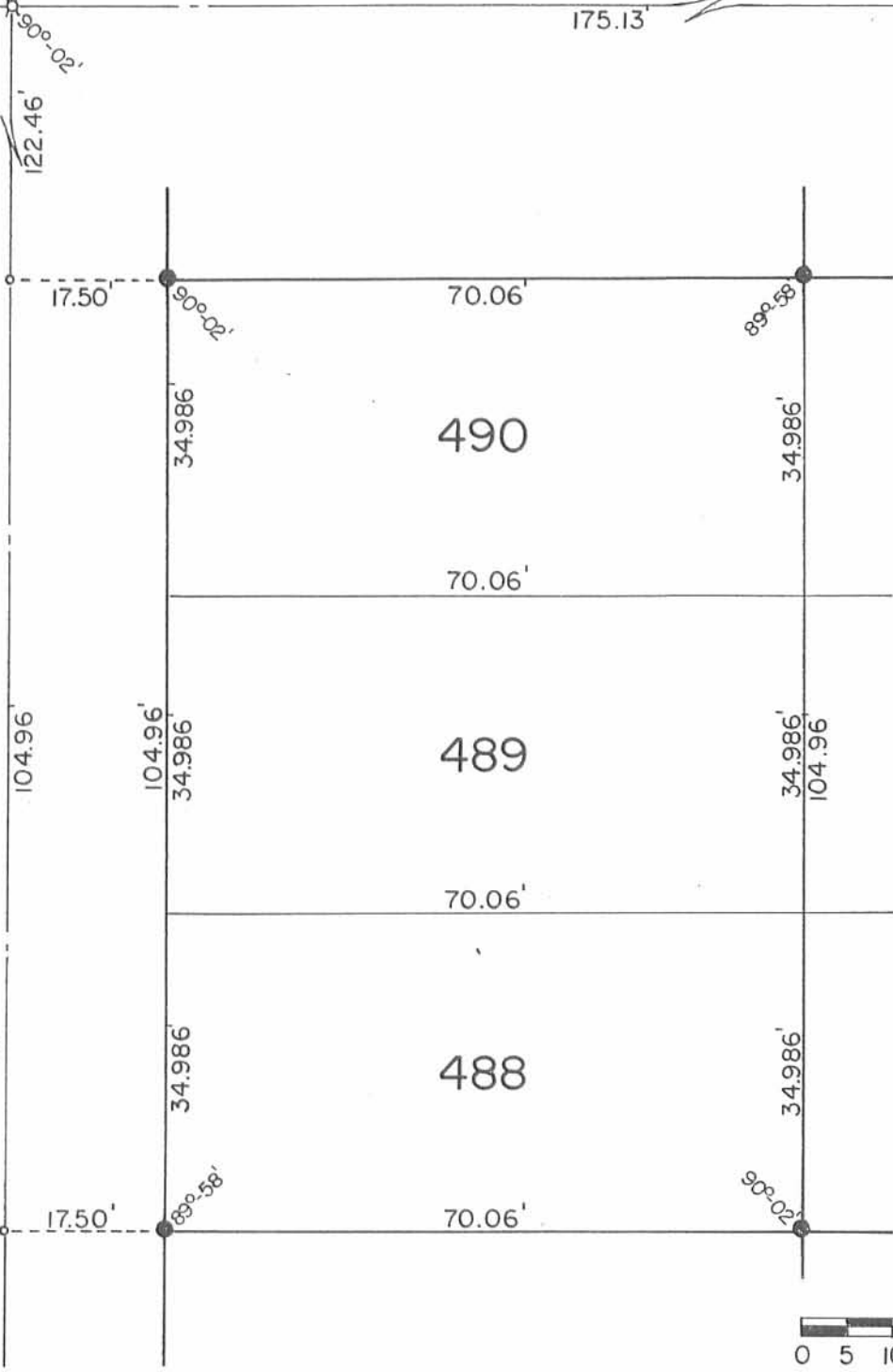
L-1138-5

Eagle Path - 35'

175.13'

Hiawatha Path - 35'

Big Bear Path - 35'



Scale: 1" = 20'

Survey of Lots No. 488, 489, 490
 Chippewa Park No. 1
 Stokes Township
 Logan County, Ohio
 June 5, 1996

INDEXED ON MAP
 7050 2P

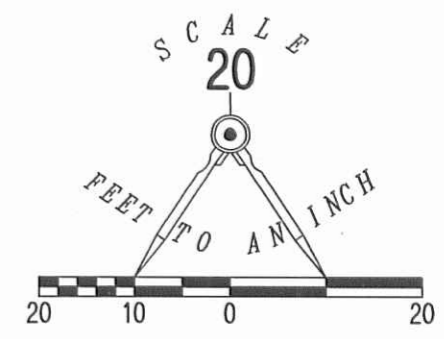
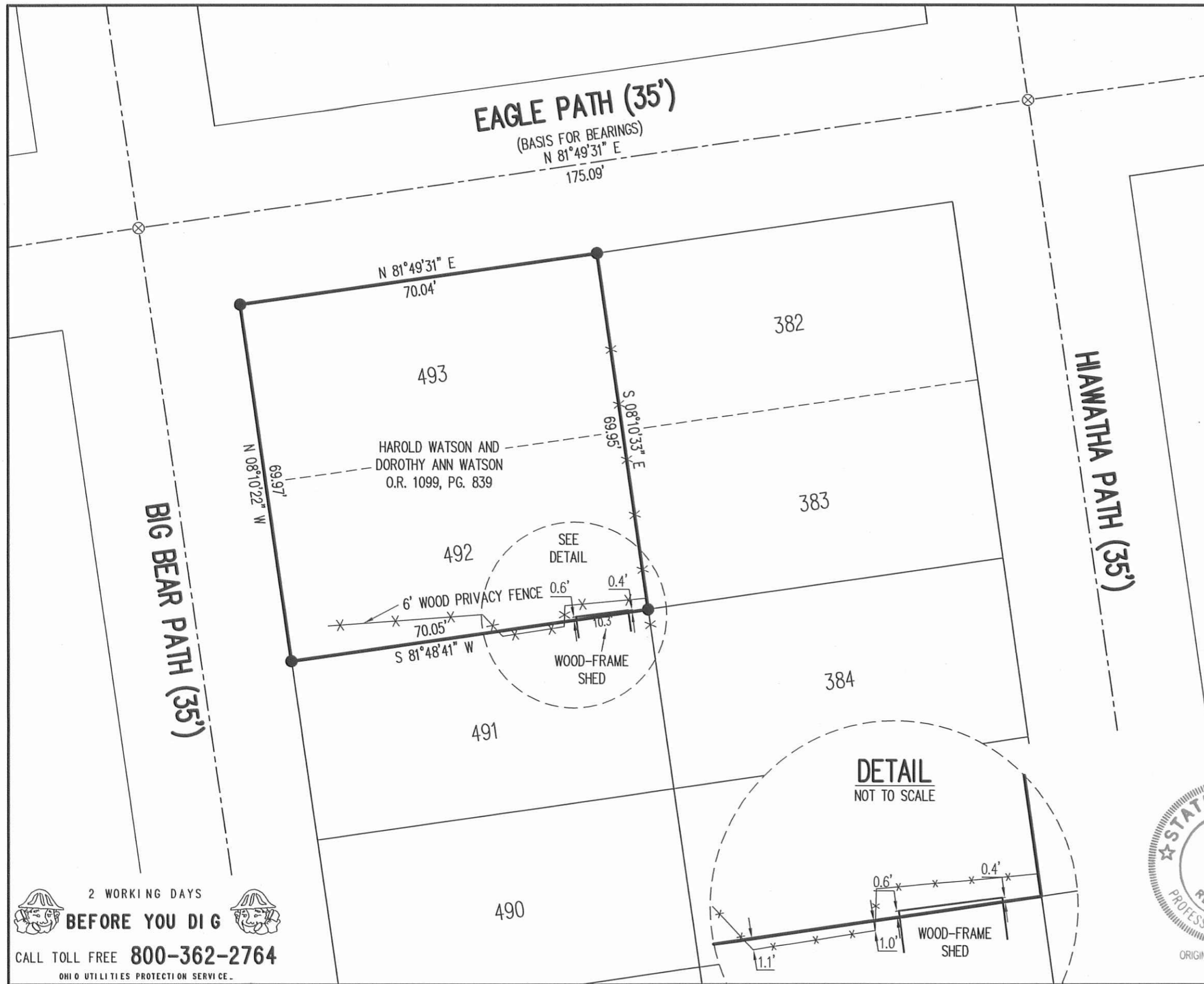


Daniel E. Gilbert
 Daniel E. Gilbert, P.S.
 Reg. Sur. No. 5402
 400 N. Park St.
 Bellefontaine, Ohio 43311

MAP ROOM

096-036

✓ **APPROVED** 4-1-13



- LEGEND:
- ⊗ RAILROAD SPIKE FOUND
 - 5/8 INCH IRON ROD SET WITH PLASTIC I.D. CAP STAMPED "LSM 7437"

RETRACEMENT SURVEY OF THE
 HAROLD WATSON AND
 DOROTHY ANN WATSON
 LOTS 492 AND 493
 CHIPPEWA PARK ALLOTMENT NO. 1
 PLAT CABINET A, SLIDE 221
 OFFICIAL RECORD 1099, PAGE 839
 VIRGINIA MILITARY SURVEY 12276
 STOKES TOWNSHIP
 LOGAN COUNTY, OHIO

SURVEYED BY:
William K. Bruce
 WILLIAM K. BRUCE
 PROFESSIONAL SURVEYOR 7437
 MARCH 26, 2013



COPYRIGHT 2013 BY:
LEE SURVEYING & MAPPING CO., INC.
 117 North Madriver Street
 BELLEFONTAINE, OHIO 43311
 (937) 593-7335
 WWW.LSMINC.US
 surveys@lsminc.us
 KSS D0313 54950313 L-5495-3

2 WORKING DAYS
BEFORE YOU DIG
 CALL TOLL FREE **800-362-2764**
 OHIO UTILITIES PROTECTION SERVICE

INDEXED ON MAP
 7050 3P