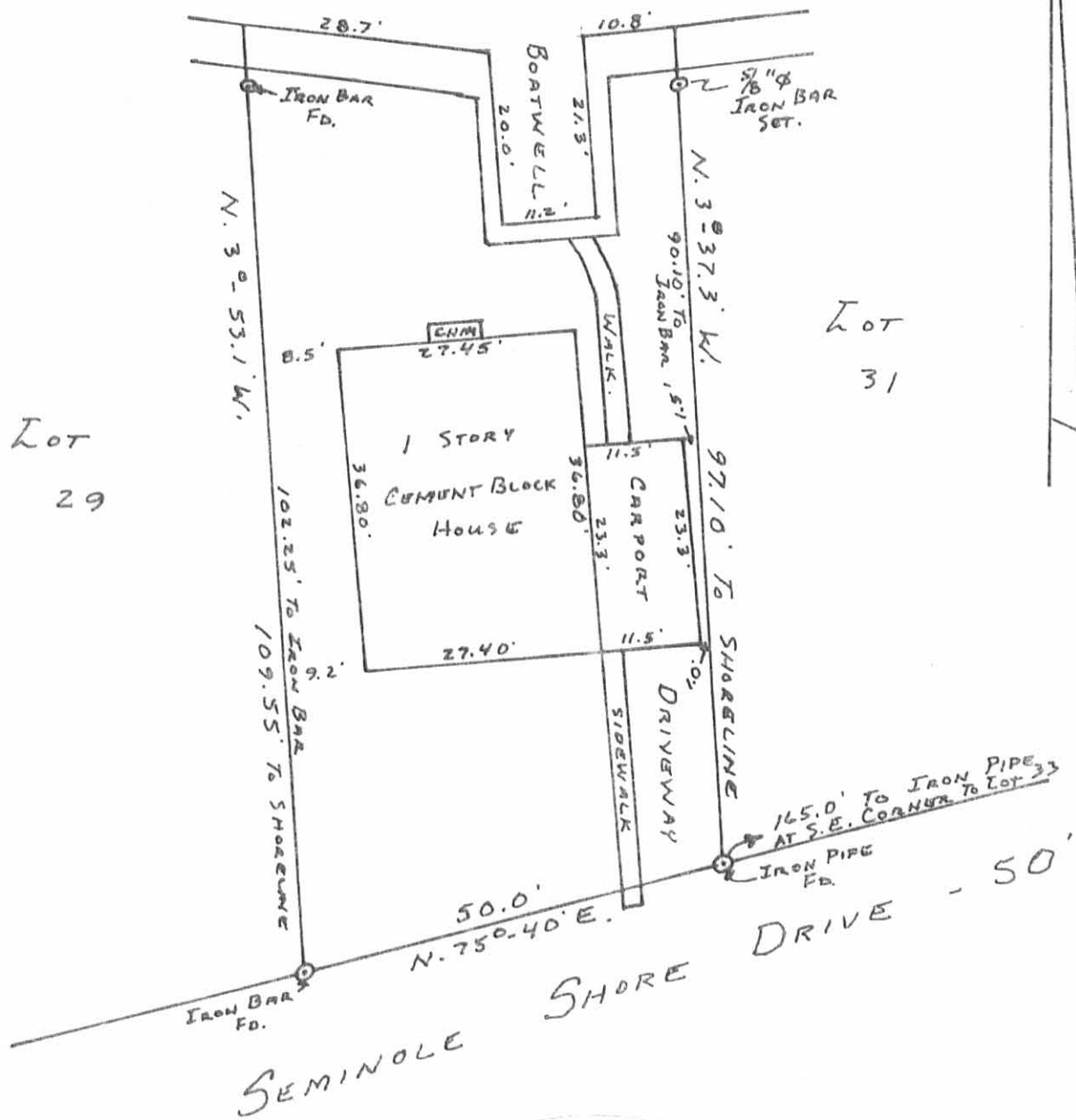


CHANNEL



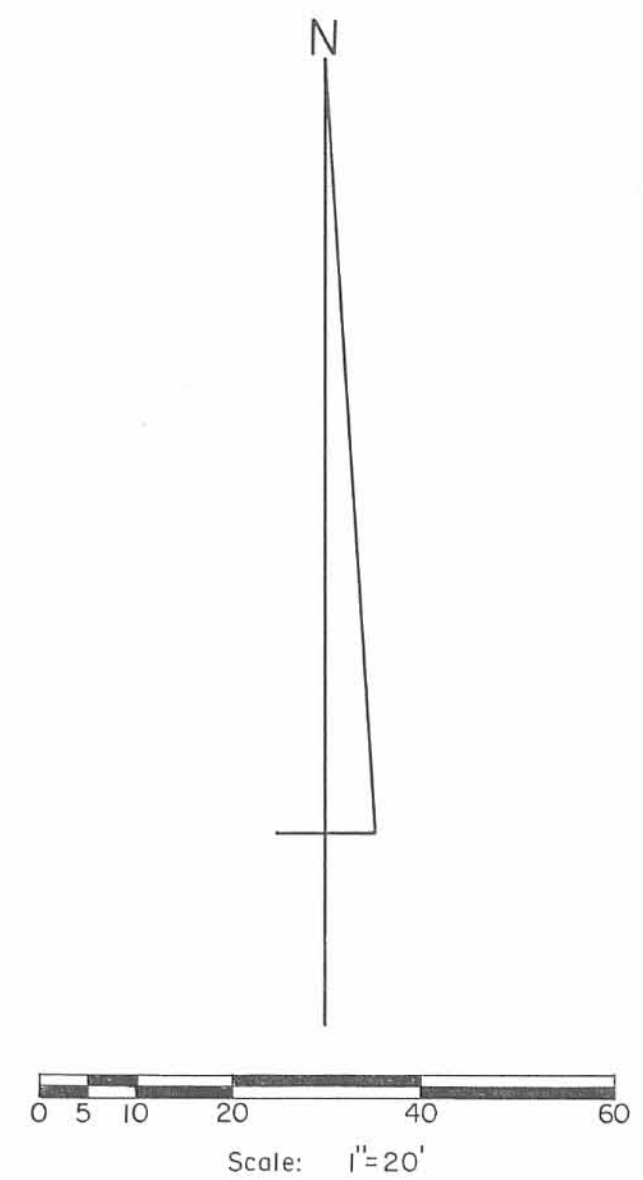
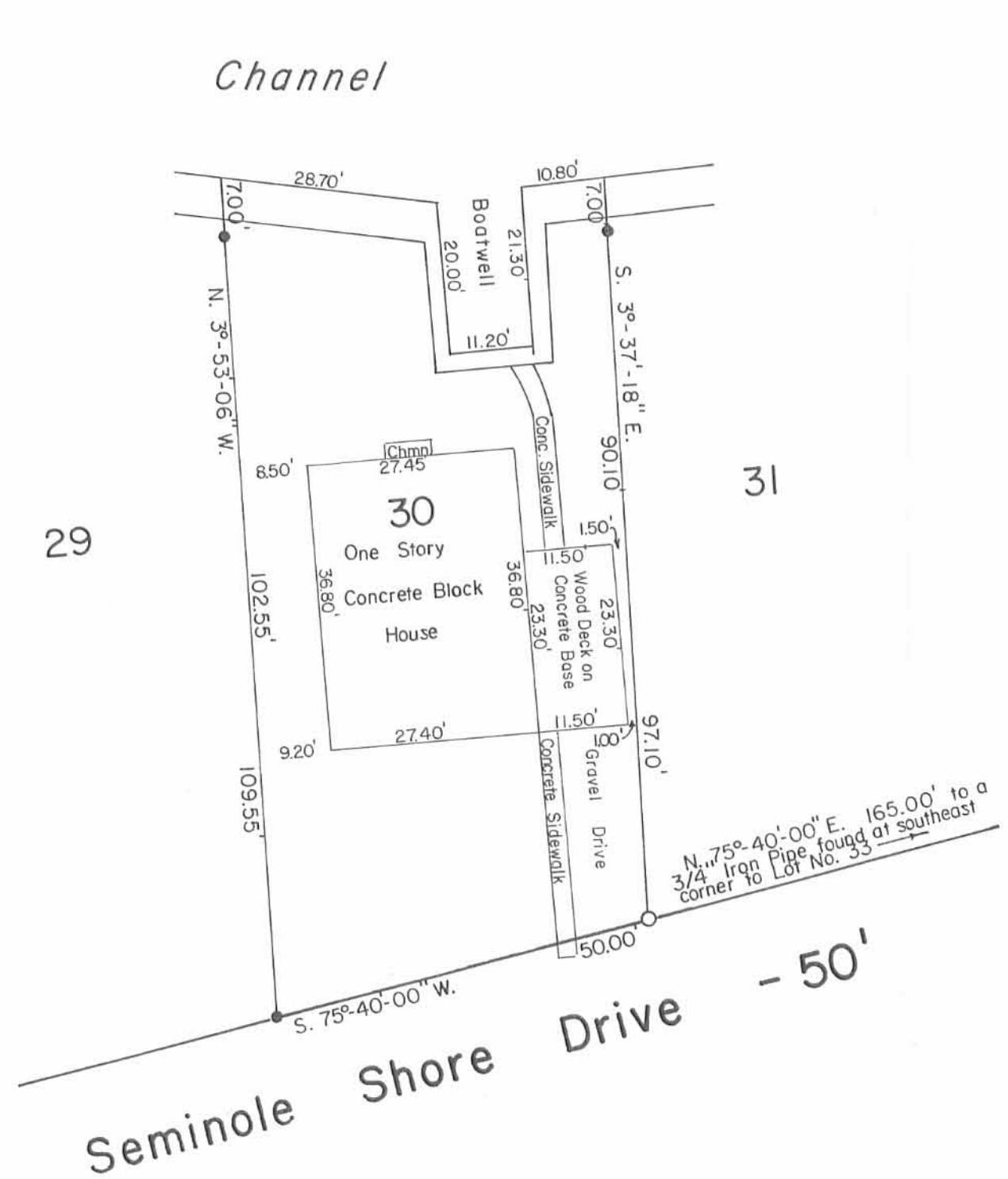
Lot 29

Lot 31

INDEXED ON MAP  
7110 1P

SURVEYED AND PLATTED BY:  
DANIEL E. GILBERT, P.S.  
REG. SUR. NO. 540Z  
1041 N. MAIN ST.  
BELLEFONTAINE, OHIO 43311

SELLATI SURVEY  
Lot No. 30  
SEMINOLE SHORES SUB. NO. 1  
SEMINOLE ISLAND  
STOKES TOWNSHIP  
LOGAN COUNTY, OHIO  
JUNE 20, 1981  
SCALE: 1" = 20'



Reference:

Seminole Shores Sub. No. 1  
Plat Cab. A Slide 252 (12-19-1944).

Symbols:

● - 5/8" Rebars Fd.  
○ - 3/4" Iron Pipe Fd.

To whom it may concern:

I, Daniel E. Gilbert, P.S., Reg. Sur. No. 5402, do hereby certify to Citizens Federal Savings and Loan Assn., that on October 18, 1995, I personally surveyed and located the improvements as shown on the accompanying plat and I did not find any encroachments.

*Daniel E. Gilbert*

Daniel E. Gilbert, P.S.  
Reg. Sur. No. 5402  
400 N. Park St.  
Bellefontaine, Ohio 43311  
Phone: 1(513) 593-1428



INDEXED ON MAP  
7110 2P

Ford to Braden Survey-Lot No. 30, Seminole Shores Sub. No. 1,  
Seminole Island, Stokes Township,  
Logan County, Ohio.

SCALE: 1"=20'	APPROVED BY:	DRAWN BY DEG
DATE: 10-18-1995		REVISED

*Daniel E. Gilbert*  
Daniel E. Gilbert, P.S.  
Reg. Sur. No. 5402

DRAWING NUMBER  
095-050

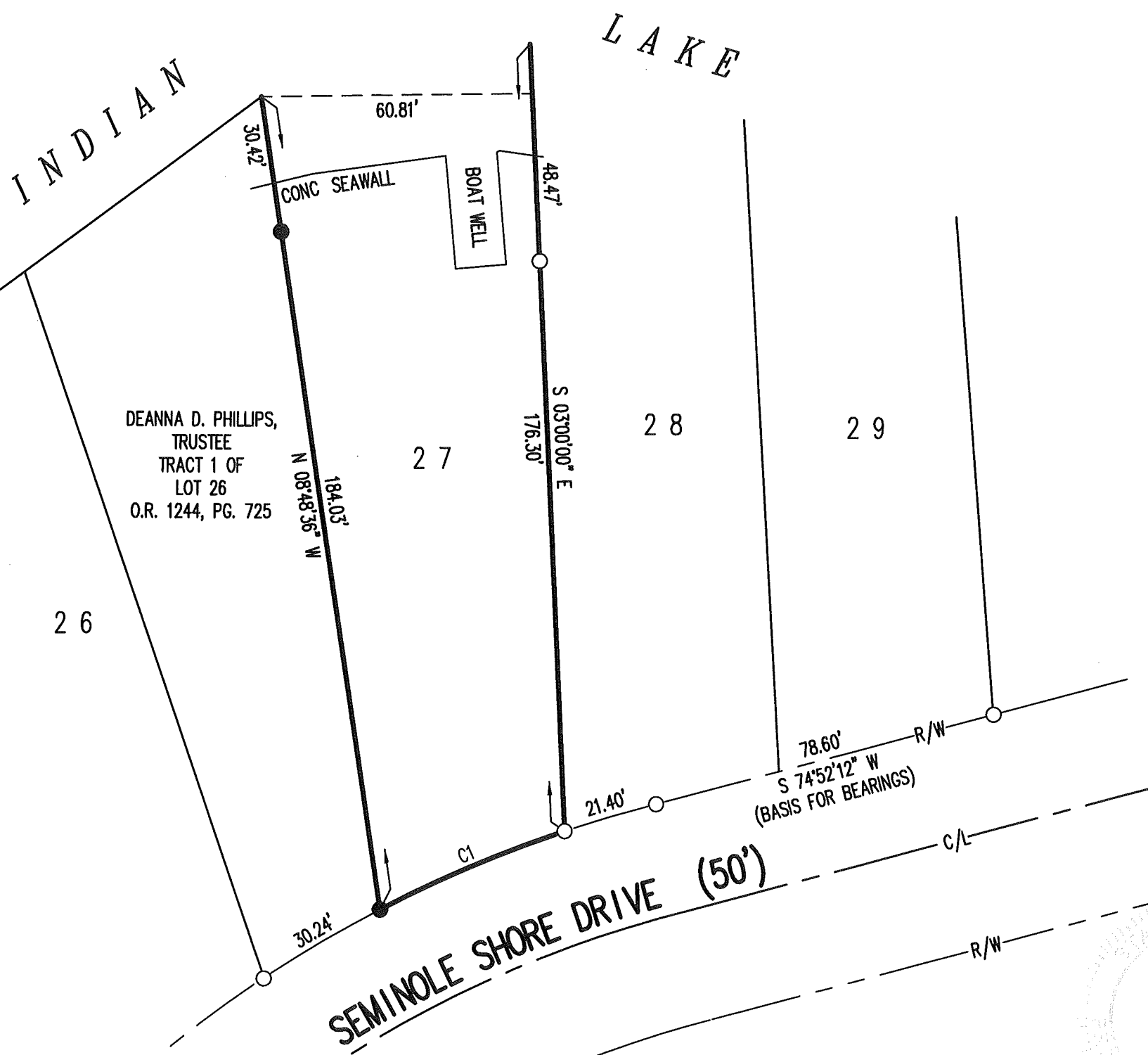
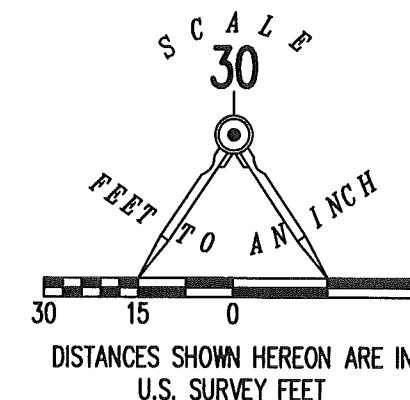
10-22-18

APPROVED

**LEGEND:**

- 5/8 INCH IRON ROD FOUND
- 5/8 INCH BY 30 INCH IRON ROD SET WITH PLASTIC I.D. CAP STAMPED "P.S. 8533"
- R/W = RIGHT-OF-WAY
- C/L = CENTER-LINE

CURVE	DELTA ANGLE	RADIUS	ARC LENGTH	CHORD BEARING	CHORD LENGTH
C1	08°57'16"	287.94'	45.00'	S 66°39'38" W	44.95'



**DEED & SURVEY REFERENCES:**

O.R. 1244, PG. 725

SEMINOLE SHORES SUBDIVISION NO. 1  
PLAT CABINET A, SLIDE 251

LOGAN COUNTY ENGINEER'S MAP ROOM  
FILE 2024 AND 7110

**BASIS FOR BEARINGS:**

THE BASIS FOR BEARINGS, SHOWN HEREON, IS AN ASSUMED BEARING FOR THE NORTH RIGHT-OF-WAY LINE OF SEMINOLE SHORE DRIVE, BEING S 74°52'12" W.

THIS SURVEY WAS PREPARED IN THE ABSENCE OF A COMPLETE AND ACCURATE TITLE SEARCH AND DOES NOT GUARANTEE TITLE.

2 WORKING DAYS



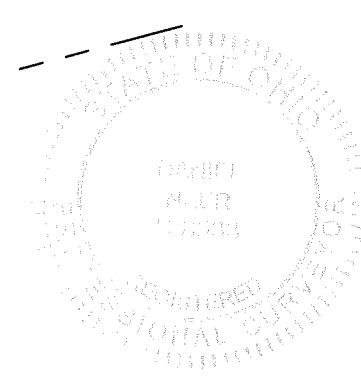
CALL TOLL FREE 800-362-2764

OHIO UTILITIES PROTECTION SERVICE

**RETRACEMENT SURVEY OF  
LOT 27  
SEMINOLE SHORES SUBDIVISION NO. 1  
PLAT CABINET A, SLIDE 251  
STOKES TOWNSHIP  
LOGAN COUNTY, OHIO**

SURVEYED BY:

*D. Neer*  
DANIEL A. NEER  
PROFESSIONAL SURVEYOR NO. 8533  
OCTOBER 9, 2018



COPYRIGHT 2018 BY:  
**LEE SURVEYING & MAPPING CO.**  
117 North Madriver Street  
BELLEFONTAINE, OHIO 43311  
(937) 593-7335  
WWW.LEE-SURVEYING.COM  
surveys@lee-surveying.com  
KSS D1018 64441018 L-6444-3

INDEXED ON MAP

7110