

# INDIAN LAKE



65

66

67

7118 IP

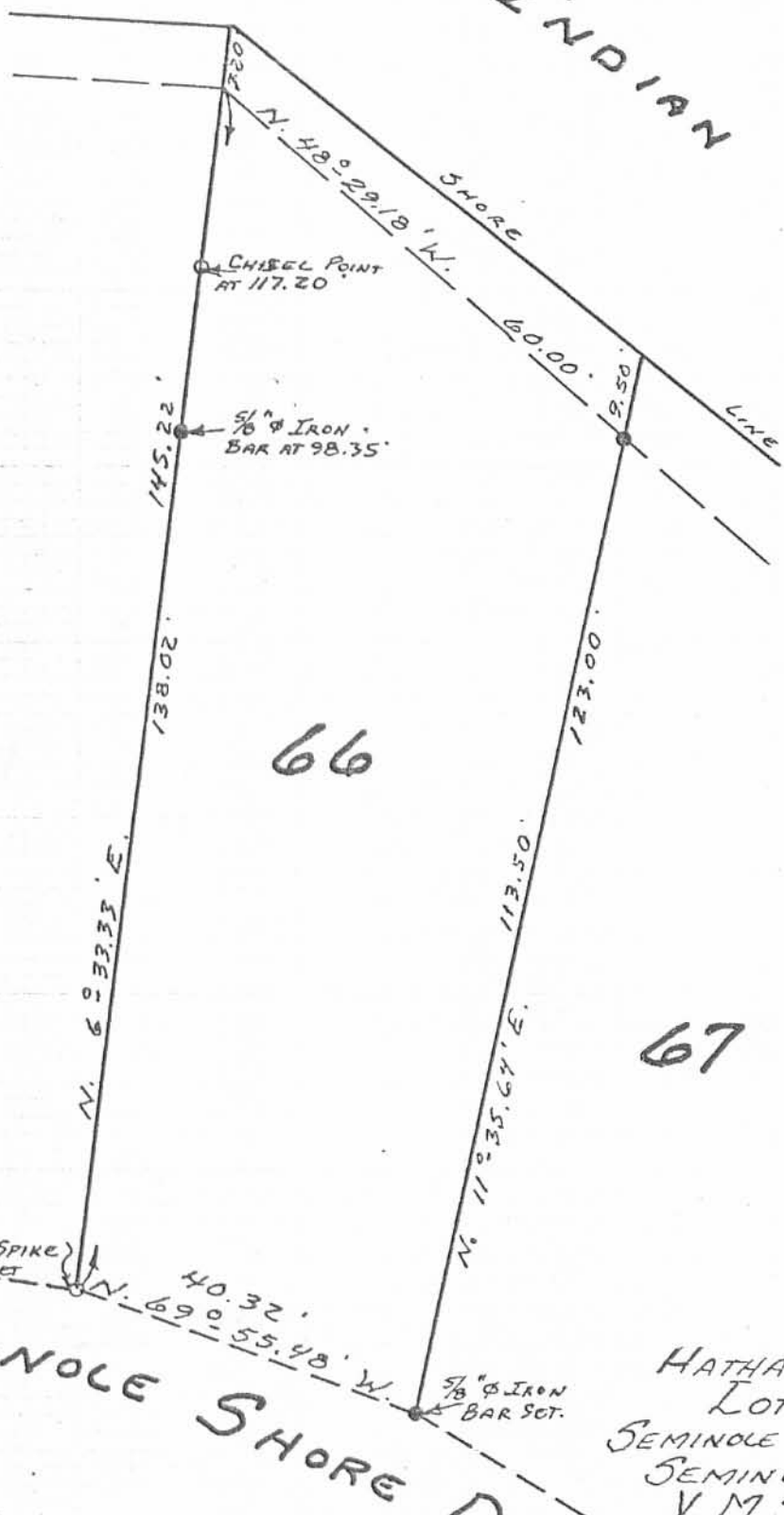
INDEXED ON MAP

SEMINOLE SHORE DRIVE

HATHAWAY SURVEY  
 Lot No. 66  
 SEMINOLE SHORES SUB. No. 2.  
 SEMINOLE ISLAND  
 V. M. S. No. 12276  
 STOKES TOWNSHIP  
 LOGAN COUNTY, OHIO  
 OCTOBER 16, 1976

SURVEYED AND PLATTED BY:  
 DANIEL E. GILBERT, P.S.  
 REG. SUR. No. 5402  
 1041 N. MAIN ST.  
 BELLEFONTAINE, OHIO 43311

SCALE: 1" = 20'



11-26-13

# Lee Surveying and Mapping Co., Inc.

**APPROVED** Land Surveys • Topography • Subdivisions • Construction Layout

117 N. Madriver St.  
Bellefontaine OH 43311



Phone: (937) 593-7335  
Fax: (937) 593-7444  
surveys@lsminc.us

## STATE OF OHIO INDIAN LAKE RESERVOIR LANDS 0.011 ACRE

Lying in Virginia Military Survey 12276, Stokes Township, Logan County, Ohio.

Being out of the State of Ohio Indian Lake Reservoir Lands and being more particularly described as follows:

Beginning on a point on the northwest corner of Lot 66 of Seminole Shores Subdivision No. 2 (Plat Cabinet A, Slide 253), referenced by a 5/8 inch iron rod set bearing S 06°-20'-45"W, a distance of 10.25 feet.

THENCE, S 61°-11'-37"E, a distance of 5.02 feet to a point on the west face of a concrete boat well.

THENCE, S 76°-03'-03"E, a distance of 12.05 feet to a point on the east face of a concrete boat well.

THENCE, S 49°-15'-38"E, a distance of 41.35 feet to a point.

THENCE, with the east line of aforesaid Lot 66 extended, S 11°-35'-38"W, a distance of 12.89 feet to a point on the northeast corner of Lot 66, referenced by a 3/4 inch iron rod found bearing S 11°-35'-38"W, a distance of 5.07 feet.

THENCE, with the north line of the said Lot 66, N 44°-55'-44"W, a distance of 63.47 feet to the point of beginning.

Containing 0.011 acre.

Property is subject to any and all previous easements and rights-of-way of record.

The basis for bearings is the east line of Lot 66 and the west line of Lot 67, being N 11°-35'-38"E, and all other bearings are from angles and distances measured in a field survey by Lee Surveying and Mapping Co., Inc. on November 22, 2013.

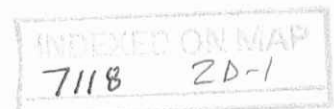


ORIGINAL STAMP IN GREEN

Description prepared by:

William K. Bruce  
Professional Surveyor 7437  
November 25, 2013

56431013



11-26-13

# Lee Surveying and Mapping Co., Inc.



Land Surveys • Topography • Subdivisions • Construction Layout

117 N. Madriver St.  
Bellefontaine OH 43311



Phone: (937) 593-7335  
Fax: (937) 593-7444  
surveys@lsminc.us

## STATE OF OHIO INDIAN LAKE RESERVOIR LANDS 0.012 ACRE

Lying in Virginia Military Survey 12276, Stokes Township, Logan County, Ohio.

Being out of the State of Ohio Indian Lake Reservoir Lands and being more particularly described as follows:

Beginning on a point on the northwest corner of Lot 67 of Seminole Shores Subdivision No. 2 (Plat Cabinet A, Slide 253), referenced by a 3/4 inch iron rod found bearing S 11°-35'-38"W, a distance of 5.07 feet.

THENCE, with the west line of Lot 67 extended, N 11°-35'-38"E, a distance of 12.89 feet to a point.

THENCE, S 49°-15'-38"E, a distance of 48.75 feet to a point on the west face of a concrete boat well.

THENCE, with the west edge of the concrete boat well, S 34°-42'-14"W, a distance of 11.08 feet to a point on the north line of Lot 67.

THENCE, with the north line of Lot 67, N 49°-34'-55"W, a distance of 43.63 feet to the point of beginning.

Containing 0.012 acre.

Property is subject to any and all previous easements and rights-of-way of record.

The basis for bearings is the east line of Lot 66 and the west line of Lot 67, being N 11°-35'-38"E, and all other bearings are from angles and distances measured in a field survey by Lee Surveying and Mapping Co., Inc. on November 22, 2013.



ORIGINAL STAMP IN GREEN

Description prepared by:

William K. Bruce  
Professional Surveyor 7437  
November 25, 2013

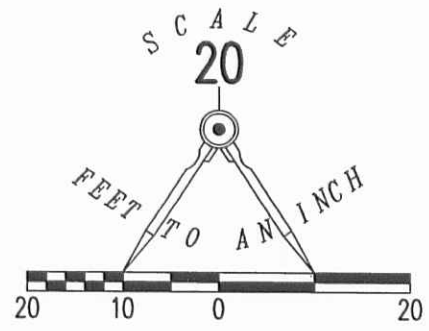
56431013



11-26-13

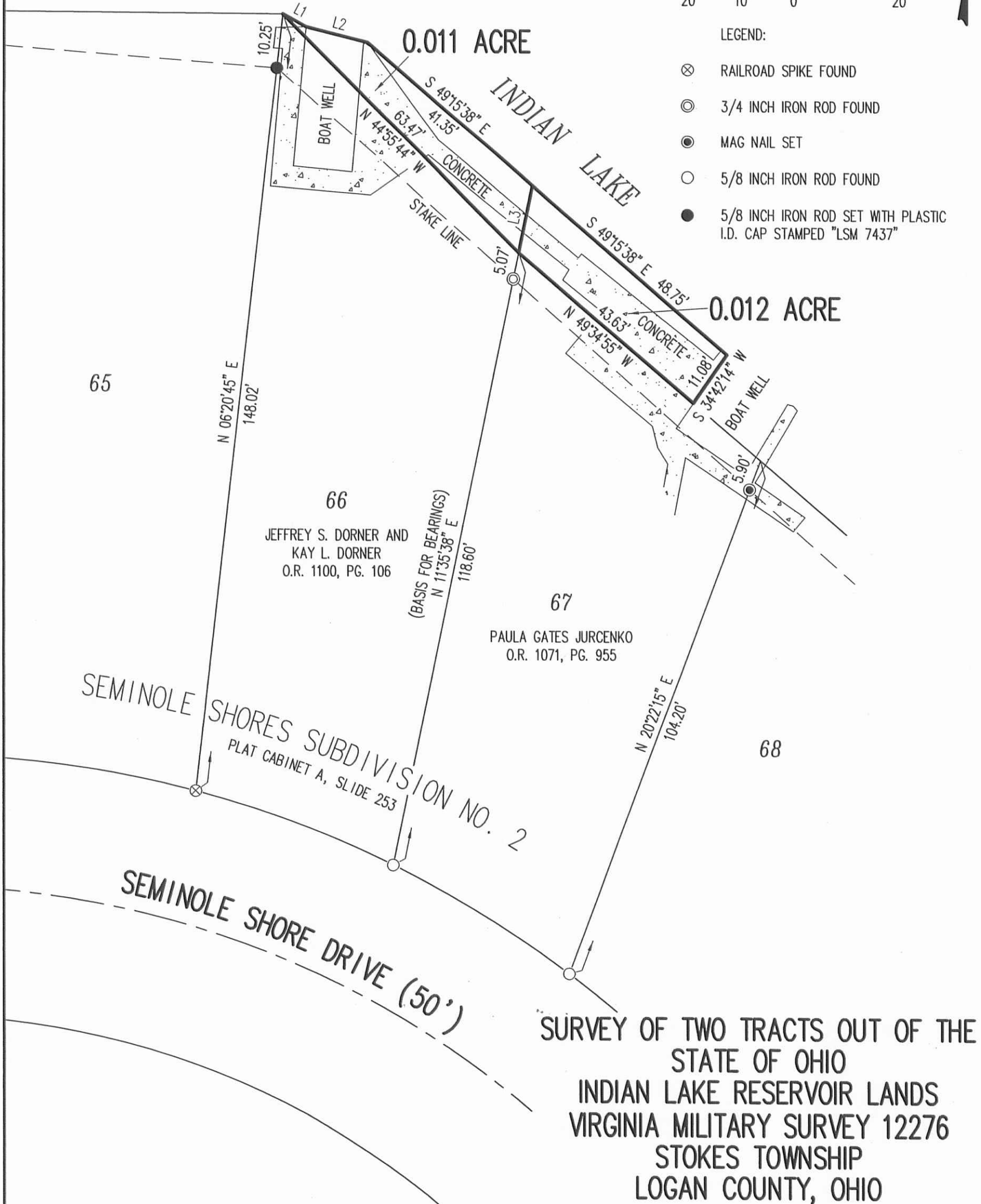
APPROVED

LINE	BEARING	DISTANCE
L1	S 61°11'37" E	5.02'
L2	S 76°03'03" E	12.05'
L3	S 11°35'38" W	12.89'



LEGEND:

- ⊗ RAILROAD SPIKE FOUND
- ⊙ 3/4 INCH IRON ROD FOUND
- MAG NAIL SET
- 5/8 INCH IRON ROD FOUND
- 5/8 INCH IRON ROD SET WITH PLASTIC I.D. CAP STAMPED "LSM 7437"



SURVEYED BY:

*William K. Bruce*  
 WILLIAM K. BRUCE  
 PROFESSIONAL SURVEYOR 7437  
 NOVEMBER 22, 2013



ORIGINAL STAMP IN GREEN

COPYRIGHT 2013 BY:  
**LEE SURVEYING & MAPPING CO., INC.**  
 117 North Madriver Street  
 BELLEFONTAINE, OHIO 43311  
 (937) 593-7335  
 WWW.LSMINC.US  
 surveys@lsminc.us

2 WORKING DAYS  
**BEFORE YOU DIG**  
 CALL TOLL FREE **800-362-2764**  
 OHIO UTILITIES PROTECTION SERVICE

INDEXED ON MAP  
 7118 ZP

KSS D1013 56431013 L-5643-3