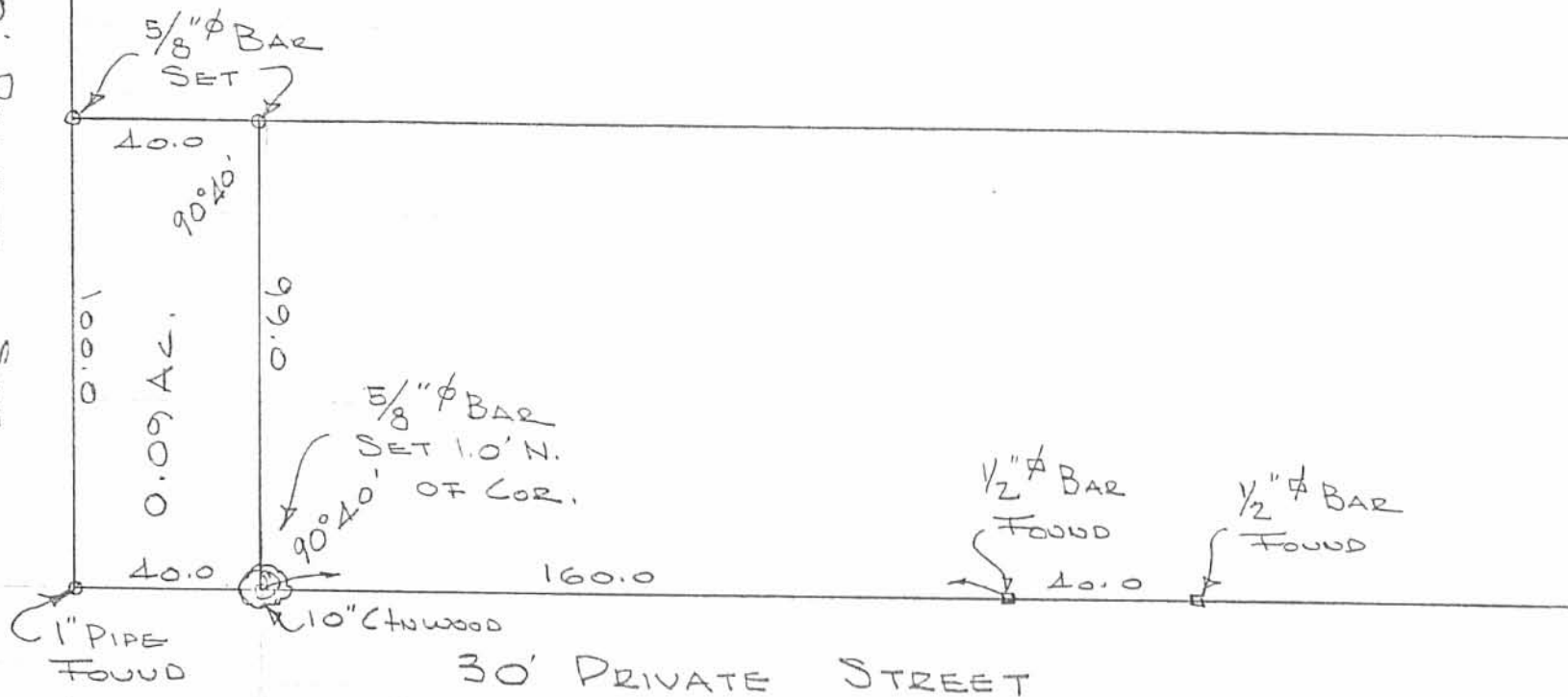




30' PRIVATE ST.



HATCHER SURVEY
 H.L. WILLIAMS TRACT
 SEC. 27 T-6S R-8E.
 STOKES TOWNSHIP
 LOGAN COUNTY, OHIO
 SEPT. 18, 1971
 SCALE 1" = 40'

INDEXED ON MAP
 7451 1P

DAN L. DODSON
 REG. SURVEYOR 4270
 BELLEFONTAINE, O
 BK 18/36