

Received 6-18-86 OK E.C.P.

Lee Surveying and Mapping Co.



Farm Surveys • Lot Surveys • Topography • Subdivisions • Construction Layout

855 EAST SANDUSKY AVENUE
BELLEFONTAINE, OHIO 43311

(513) 593-5780

CLAYTON M. LEE, P.S.
JEFFREY I. LEE, P.S.

BOOGHER TO DICKSON

Lying in the east half of Section 4, T-7-S, R-8-E, Stokes Township, Logan County, Ohio.

Being off the east side of that 109 acres in the name of A.G. Boogher (Volume O.R. 18, Page 650) and being all of that part of said 109 acres lying east of a drainage ditch through it. Being more particularly described as follows:

Beginning at a railroad spike found on the center-line of Township Road 240, marking the southeast corner of said 109 acres and also being the southwest corner of the William R. Dickson, Jr., 73.166 acre tract (Volume O.R. 18, Page 40).

THENCE, with the said road center-line, N 89°-03' W, a distance of 443.10 feet to a railroad spike set over a culvert for a drainage ditch.

THENCE, with the center-line of said drainage ditch, northerly through said 109 acres, the following 5 bearings and distances, with bearings and distances from forward point to 5/8" iron rod references shown in parenthesis.

N 23°-35'-20" E, 173.37 feet (S 81°-48'-25" W, 13 feet).

N 7°-56'-13" E, 388.46 feet (S 63°-18'-10" W, 14 feet).

N 41°-03'-33" W, 493.87 feet (S 38°-52'-24" W, 10 feet).

N 19°-55'-10" W, 272.36 feet (N 61°38'-56" W, 8 feet).

N 4°-09' W, 346.72 feet (N 89°-23'-20" W, 12 feet) to a point on the north line of grantor's 109 acres.

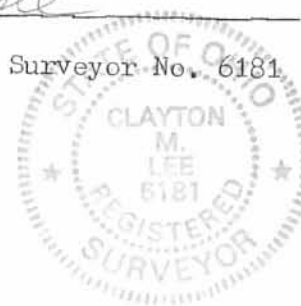
THENCE, from the point on the center-line of ditch, with the said north property line, S 89°-23'-30" E, a distance of 777.10 feet to a 5/8" iron rod set on the northeast corner of said 109 acres.

THENCE, with the east line of said 109 acres, S 0°-33'-30" W, a distance of 1517.02 feet to the point of beginning, passing the northwest corner of the Dickson 73.166 acres at 174.04 feet.

Containing 18.912 acres.

Prepared by:

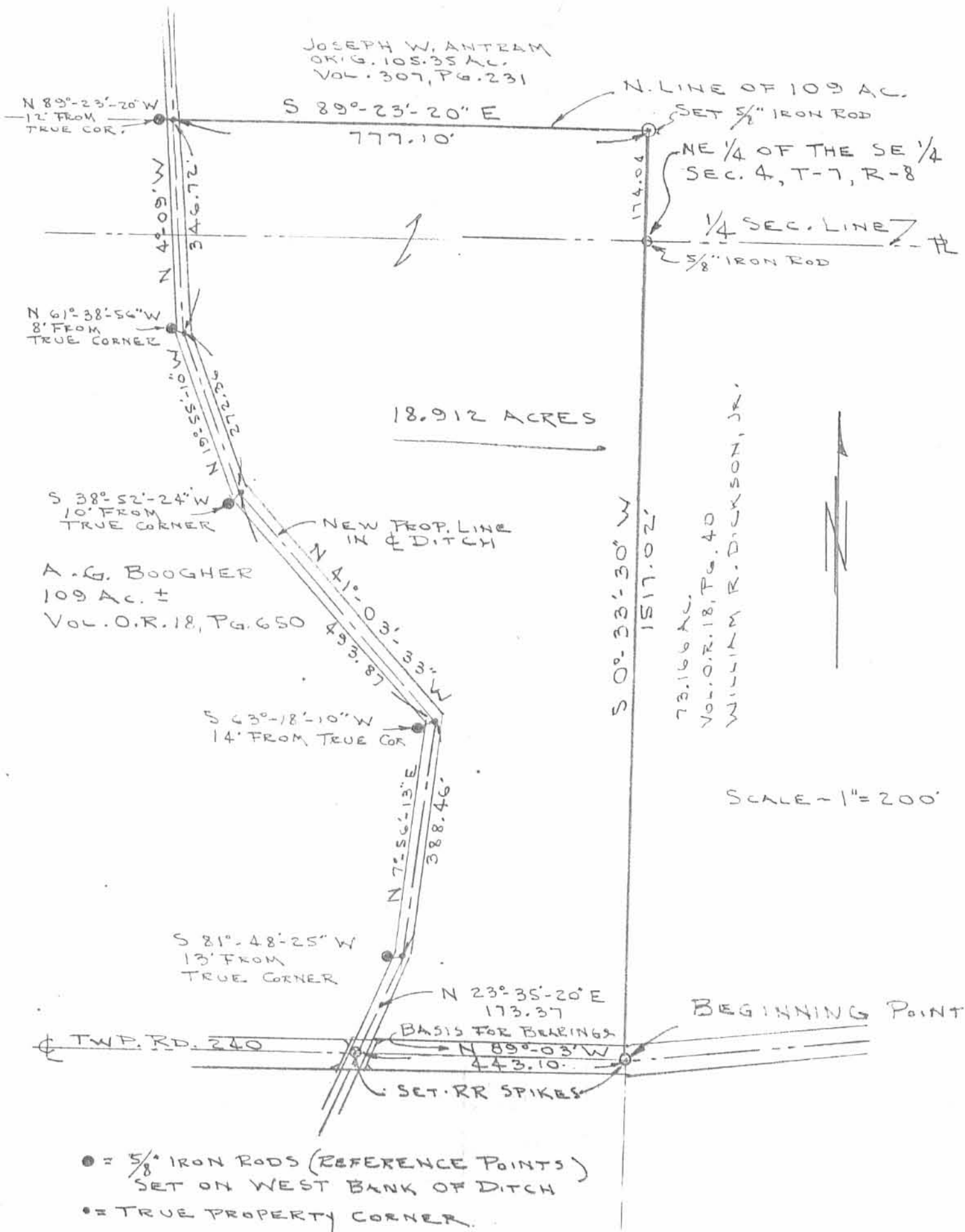
Clayton M. Lee
Clayton M. Lee
Registered Professional Surveyor No. 6181
June 17, 1986



This description prepared from an actual field survey.

INDEXED ON MAP
7540 1D

ORIGINAL STAMP IN GREEN



JOSEPH W. ANTRAM
 O.K.G. 108.35 AC.
 VOL. 307, PG. 231

N. LINE OF 109 AC.
 SET 5/8" IRON ROD

NE 1/4 OF THE SE 1/4
 SEC. 4, T-7, R-8

1/4 SEC. LINE
 SET 5/8" IRON ROD

18.912 ACRES

S 0° 33' 30" W
 1517.02'

73.166 AC.
 VOL. O.R. 18, PG. 40
 WILLIAM R. DICKSON, JR.

SCALE - 1" = 200'



- = 5/8" IRON RODS (REFERENCE POINTS)
 SET ON WEST BANK OF DITCH
- = TRUE PROPERTY CORNER.

SURVEY OF 18.912 ACRES OUT OF THE
 A.G. BOOGHER 109 AC. TRACT (VOL. O.R. 18, PG. 650)
 SEC. 4, T-7-S, R-8-E, STOKES TWP.
 LOGAN COUNTY, OHIO

(BOOGHER TO DICKSON)

By: *Jeffrey I. Lee*
 JEFFREY I. LEE
 PROF. SURVEYOR 6359
 JUNE 9, 1986



ORIGINAL STAMP IN GREEN

INDEXED ON MAP
 7540 1P

3-20-23

APPROVED



**Description
for
18.328 Acres**

Situated in the Northwest Quarter, Southwest Quarter and the Southeast Quarter of Section 4, Town 7 South, Range 8 East, Stokes Township, Logan County, Ohio, being part of the Alan G. Boogher and Sally McTish 90.02 acre and the Alan G. Boogher and Sally Sue Boogher 109 acre tract as described in Official Record Volume 293, Page 288 and Official Record Volume 18, Page 650, respectively and being more particularly described as follows;

Beginning at the intersection of County Road 54 with Township Road 240, being a 5/8" iron pin found;

Thence along the south line of said 109 acre tract and the north line of the Phyllis Yeasel Trustee 129.71 acre tract as described in Official Record Volume 784, Page 63, S.70°00'00"W., a distance of 159.13 feet to the centerline of Muchinippi Creek, passing a 5/8" iron pin set at 109.13 feet;

Thence along said centerline of Muchinippi Creek and the east line of the James D. and Rhonda D. Wildermuth 217.278 acre tract as described in Official Record Volume 548, Page 505 in on the following thirteen (13) courses and distances:

1. N.08°33'57"W., a distance of 116.74 feet to a point;
2. N.21°51'48"W., a distance of 117.88 feet to a point;
3. N.15°19'49"W., a distance of 185.98 feet to a point;
4. N.36°31'44"W., a distance of 95.80 feet to a point referenced by a 5/8" iron pin set, N.21°03'27"E a distance of 27.49 feet;
5. N.71°22'42"W., a distance of 92.27 feet to a point;
6. S.84°33'01"W., a distance of 264.46 feet to a point;
7. N.87°45'42"W., a distance of 180.72 feet to a point;
8. N.58°25'52"W., a distance of 92.59 feet to a point referenced by a 5/8" iron pin set, N.74°20'21"E a distance of 62.76 feet;
9. N.13°15'12"W., a distance of 200.17 feet to a point;
10. N.22°37'12"W., a distance of 84.12 feet to a point;
11. N.09°51'00"W., a distance of 452.36 feet to a point referenced by a 5/8" iron pin set, N.18°57'40"E a distance of 63.86 feet;
12. N.36°52'12"W., a distance of 435.66 feet to a point;
13. N.42°52'12"W., a distance of 207.05 feet to a point referenced by a 5/8" iron pin set, S.18°46'09"W a distance of 101.36 feet;

Thence along the north line of said 217.278 acre tract, N.88°41'26"W., a distance of 520.50 feet to a 5/8" iron pin set;

Thence on the east line of the Cheryl Arlene Burch 33.25 acre tract as described in Official Record Volume 1196, Page 459, Tract C, N.01°11'32"E., a distance of 613.20 feet to a 5/8" iron pin found in the centerline of County Road 54;


Thence along said centerline of County Road 54 on the following five (5) courses and distances:

1. S.51°08'52"E., a distance of 237.46 feet to a 5/8" iron pin found;
2. S.45°09'28"E., a distance of 680.20 feet to a spike found, passing a spike found at 470.26 feet;
3. S.45°08'02"E., a distance of 1285.50 feet to a 5/8" iron pin found;
4. a curve to the right with an arc length of 467.64', with a radius of 975.00', with a chord bearing of S.33°32'04"E., with a chord length of 463.17', having a delta angle of 27°28'51", to a 5/8" iron pin found;
5. S.21°12'12"E., a distance of 438.17 feet to the *Point of Beginning*;

Containing 18.328 acres, more or less, with 2.129 acres in the road right-of-way with 4.981 acres being in said 90.02 acre tract and 13.347 acres in said 109 acre tract and being subject to all legal highways, rights-of-way, easements, restrictions, covenants, and/or conditions of record.

North and bearing system based on Ohio North State Plane Grid, NAD 83, ADJ. 2011.
The above description and bearing system is based on a survey prepared by Michael L. Howbert, Registered Professional Surveyor, No. 7959, in December of 2020.




 Michael L. Howbert, P.S.

INDEXED ON MAP
7540

APPROVED

PLAT OF SURVEY FOR S. ANSPAUGH

SITUATED IN:
SECTION 4
TOWN 7 S. RANGE 8 E.,
STOKES TOWNSHIP,
LOGAN COUNTY, OHIO

CHERYL ARLENE BURCH
O.R. 1196, PG. 459, TRACT C
33.25 AC.

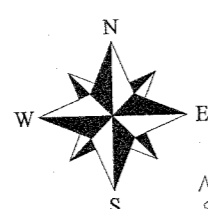
ALAN BOOGHER AND
SALLY MCTISH
O.R. 293, PG. 288
90.02 AC.
4.981 AC. FROM 90.02 ACRE TRACT

SHANG & DENISE NEWLAND
O.R. 1255, PG. 475
0.82 AC.

JAMES D. AND RHONDA D. WILDERMUTH
O.R. 548, PG. 505
217.278 AC.

18.328 ACRES
2.129 AC. IN R/W
13.347 AC. FROM 109 ACRE TRACT
ALAN G. AND SALLY SUE BOOGHER
O.R. 18, PG. 650
109 AC.

PHYLLIS B. YEASEL, TRUSTEE
O.R. 784, PG. 683
129.71 AC.



NORTH AND BEARING
SYSTEM BASED ON
OHIO NORTH STATE
PLANE GRID, NAD 83
ADJ. 2011.

SECTION LINE

NW. 1/4
SW. 1/4 SE. 1/4

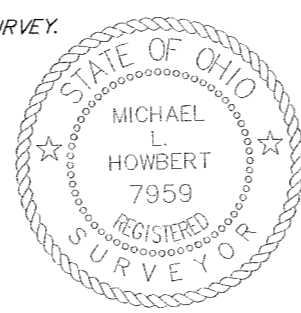
C.R. 54

MUCHINIPPI CREEK
CURRENT DITCH LOCATION POSSIBLY
RELOCATED BY PREVIOUS DITCH PROJECTS

ELECTRIC EASEMENT

SOUTHWEST CORNER
SOUTHWEST QUARTER
SECTION 4

THIS PLAT IS BASED ON AN ACTUAL FIELD SURVEY.



MICHAEL L. HOWBERT
REGISTERED PROFESSIONAL
SURVEYOR NO. 7959 IN OHIO
DECEMBER 13, 2020

LINE	BEARING	DISTANCE
L1	N08°33'57"W	116.74'
L2	N21°51'48"W	117.88'
L3	N15°19'49"W	185.98'
L4	N36°31'44"W	95.80'
L5	N71°22'42"W	92.27'
L6	S84°33'01"W	264.46'
L7	N87°45'42"W	180.72'
L8	N58°25'52"W	92.59'
L9	N13°15'12"W	200.17'
L10	N22°37'12"W	84.12'
L11	N09°51'00"W	452.36'
L12	N36°52'12"W	435.66'
L13	N42°52'12"W	207.05'

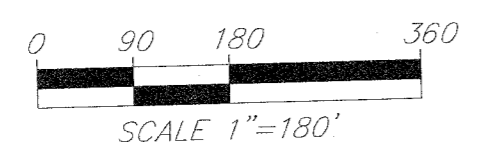
- LEGEND:
- CONC. R/W MON. FOUND
 - △ SPIKE FOUND
 - 5/8" IRON PIN FOUND
 - 5/8" IRON PIN W/ CAP SET

CURVE	ARC LENGTH	RADIUS	DELTA ANGLE	CHORD BEARING	CHORD LENGTH
C1	467.64'	1975.00'	27°28'51"	S33°32'04"E	463.17'

NOTES:
FOUND MONUMENTATION IN GOOD CONDITION
UNLESS OTHERWISE NOTED.
DATA SOURCES INCLUDE DOCUMENTS CITED.
SURVEYS
A TITLE SEARCH IS RECOMMENDED TO DETERMINE
EASEMENTS, RESTRICTIONS, AND/OR OTHER
ENCUMBRANCES AFFECTING THE PROPERTY
SHOWN HEREON.

HOWBERT SURVEYING LLC
8477 MERICLE ROAD
FORT JENNINGS, OHIO 43844
419-863-0289

DATE: 12/15/20 REV:
CLIENT: S. ANSPAUGH SCALE: 1" = 180'
JOB #: 655-12-20 CHK:



INDEXED ON MAP
7540