

LEGEND

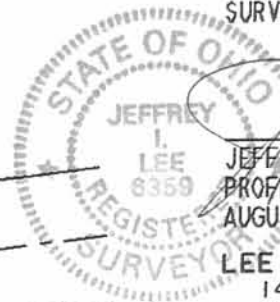
- ⊕ RAILROAD SPIKE FOUND
- ⊙ PK NAIL SET
- 5/8" I. ROD SET

IP

INDEXED ON MAP
8167

RETRACEMENT SURVEY OF
 LOTS 730, 731, 732 & 733
 CHIPEWA PARK ALLOTMENT NO. 1
 V.M.S. 12276
 STOKES TOWNSHIP
 LOGAN COUNTY, OHIO

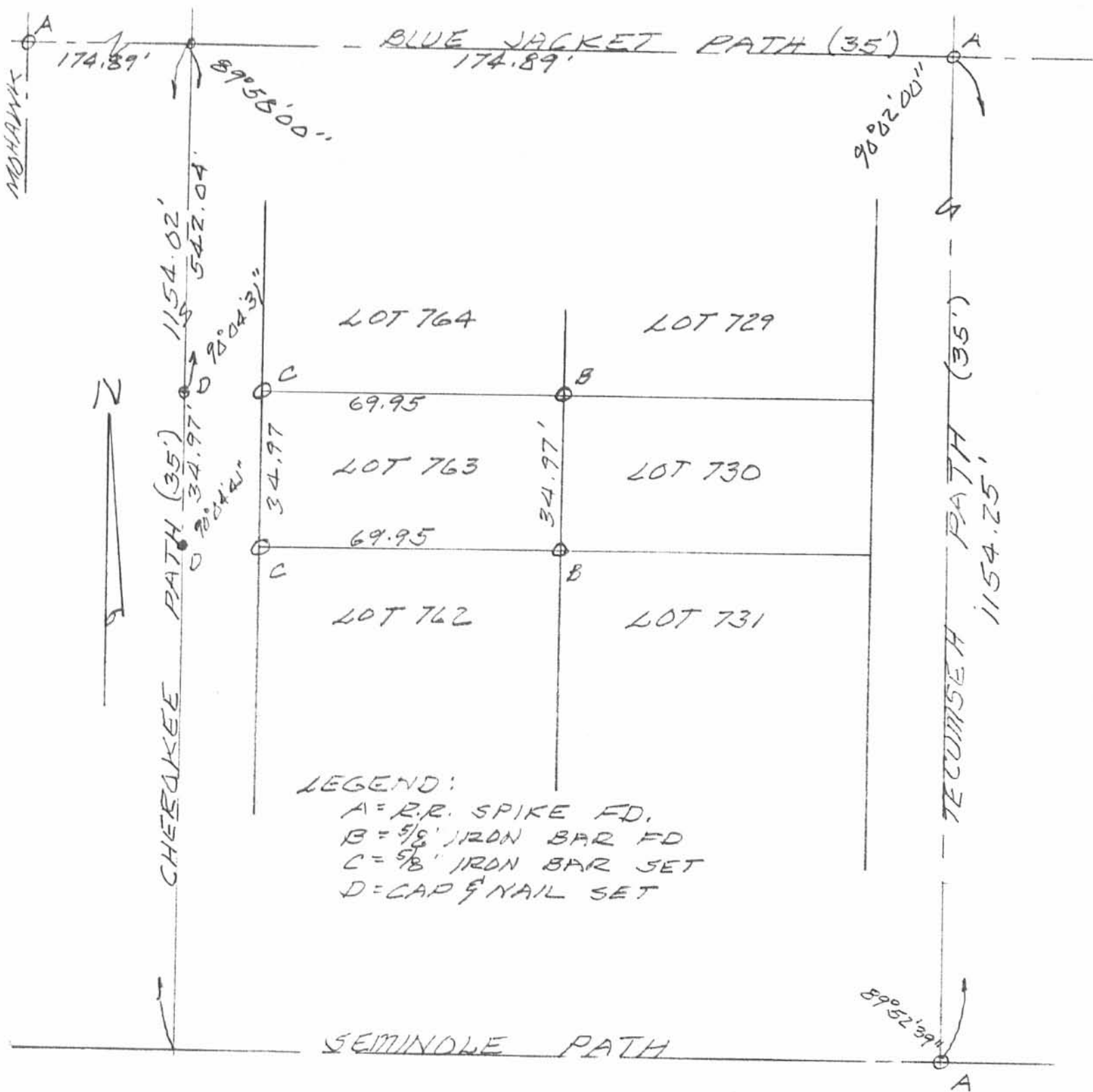
SURVEYED BY:



Jeffrey I. Lee
 JEFFREY I. LEE
 PROFESSIONAL SURVEYOR 6359
 AUGUST 8, 1991

LEE SURVEYING & MAPPING CO.
 143 East Columbus Avenue
 BELLEFONTAINE, OHIO 43311
 (513) 593-7335

ORIGINAL STAMP IN



SURVEY OF LOT 763 IN CHIPPEWA
 PARK NO 1, STOKES TOWNSHIP,
 LOGAN COUNTY, OHIO FOR CLYDE
 MCGINNIS.

MARCH 13, 1992
 SCALE: 1" = 30'

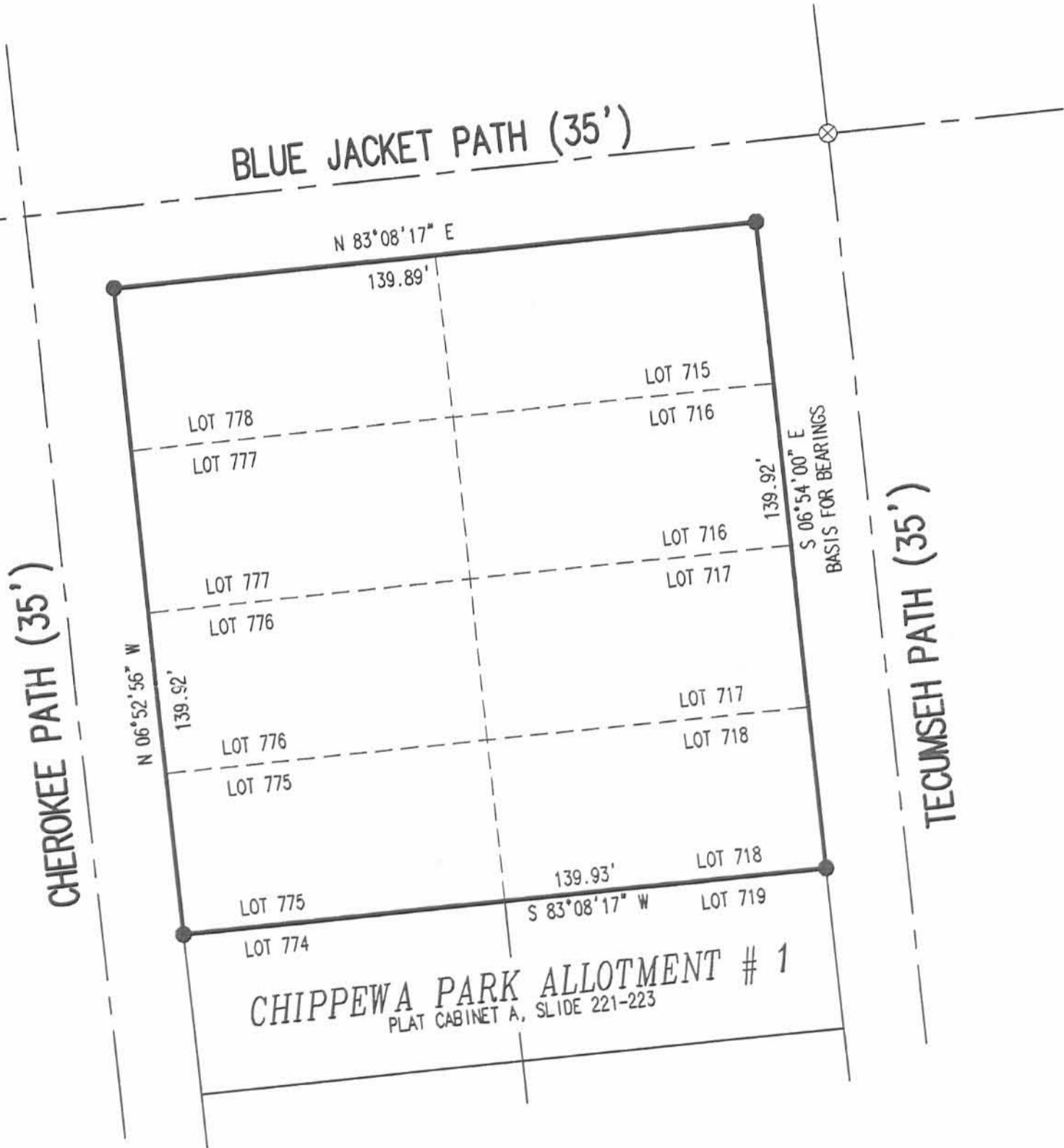
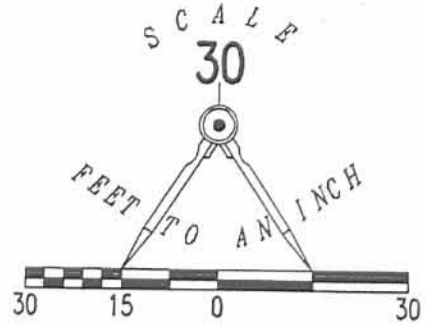


INDEXED ON MAP
 8167

2P *Leslie H. Geeslin*
 LESLIE H. GEESLIN
 RUSHESVILLE OHIO
 PH 513-468-2793

LEGEND

- 5/8 INCH IRON ROD SET
- ⊗ RAILROAD SPIKE FOUND



A RETRACEMENT SURVEY OF
 LOTS 778, 777, 776, 775, 715, 716, 717 AND 718
 CHIPPEWA PARK ALLOTMENT # 1
 PLAT CABINET A, SLIDE 221-223
 VIRGINIA MILITARY SURVEY 12276
 STOKES TOWNSHIP
 LOGAN COUNTY, OHIO

SURVEYED BY:

[Signature]
 JEFFREY I. LEE
 PROFESSIONAL SURVEYOR 6359
 JULY 7, 2006



ORIGINAL STAMP IN GREEN

COPYRIGHT 2006 BY:
 LEE SURVEYING & MAPPING CO., INC.
 117 North Madriver Street
 BELLEFONTAINE, OHIO 43311
 (937) 593-7335

ADW D0706 4269066 L-4269066-3

2 WORKING DAYS
BEFORE YOU DIG
 CALL TOLL FREE **800-362-2764**
 OHIO UTILITIES PROTECTION SERVICE.

INDEXED ON MAP
 8167 3P