

Sicco River

(313)

By N 78° 30' E 779 pole

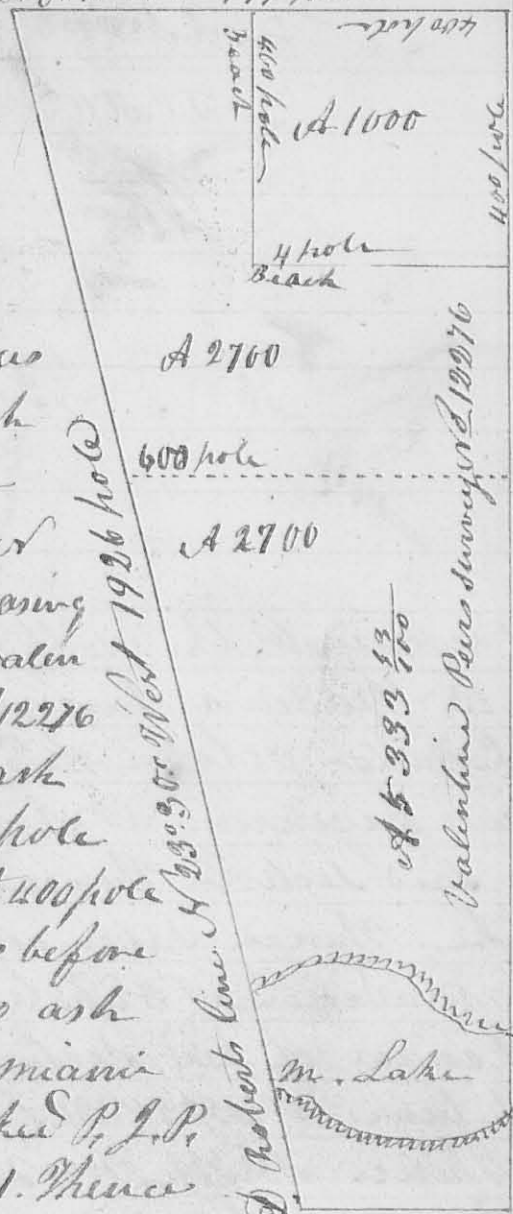
Surveyed for Mauris  
Ganshaw October  
14<sup>th</sup> 1839 Military  
Survey No 12276 on  
Roberts line as follows

Beginning At an ash  
tree in Roberts line  
See letter, A Thence  
N 78° 30' East 779 pole passing  
a Beach corner to valen-  
-tine pier survey No 12276  
at 379 pole to two ash  
thence S 11° 30' E 1876 pole  
passing a detached at 400 pole  
corner to survey as before  
to a beach and two ash  
on the side of the Miami  
River. Beach marked P. J. P.  
And H. J. P. Date 1831. Thence  
S 78° 30' W 330 pole to an ash  
maple and Elm in Roberts line Thence  
With Roberts line N 23° 30' W 1926 pole  
to the beginning containing 5400 acres  
L. S. O. P. M. S. E. John Abel Deputy

466

(8461)

variation on Roberts line 60' East the other 30' East



B. S. M. 11030' East 1876 pole

Ash & Elm

A 2700

600 pole

A 2700

A 333 1/2

Valentine Pier Survey No 12276

M. Lake

A. J. M. 1831

A scale of 400 pole to the inch

Note the dotted line represents the division line  
between Satham and Herps J. A. D. P.

INDEXED ON MAP  
8461 1D



8461

Survey No. 688 ~~Surveyed~~ Surveyed Nov. 1-2<sup>nd</sup> 1849 for George Spence assignee of Jacob Harner assignee of Elisha Mulford part of Military Entry No. 12276 on the Miami River forfeited to the state in the name of Luke Still in the year 1844 and sold to said Mulford in the year 1845. Beginning at two large Maples and a Cottonwood in Roberts' line N.W. corner of a tract of land sold by Allen Satham to Jasper Plyly thence with Plyly's line N 78° E 464 poles to an Ash, Lym and Large Elm, N.E. corner to Plyly; thence N 12° W. 135 poles to two Syc- ashes and a Hornbeam; thence S 78° W 486 poles crossing a small Lake at 286 poles to an Ash, Maple, and Elm, in Roberts' line thence with said line S 34° E 145 poles to place of beginning containing 400 3/4 Acres.

Cyrus Cherry }  
 Abram Cherry } C.C.  
 Jacob Harner Mkr.

INDEXED ON MAP  
 8461 2D

O. Hayes Sur. Secy

8581

Survey No. 689 ~~Surveyed~~ Surveyed Jan. 13. 1850 for Peter Detrich two lots of land one to Felix Mowry and the other for David Detrich For Mowry as follows Beginning at a Stake at the S.W. corner of the N.E. q. of Section No. 8 T. 3. R. 14. thence from which a White Oak 20 S. E. bears N 84 1/2° E 26 links distant; thence N 10° E 57 poles to a stake in a prairie; thence S 89° E 37 1/2 poles to another