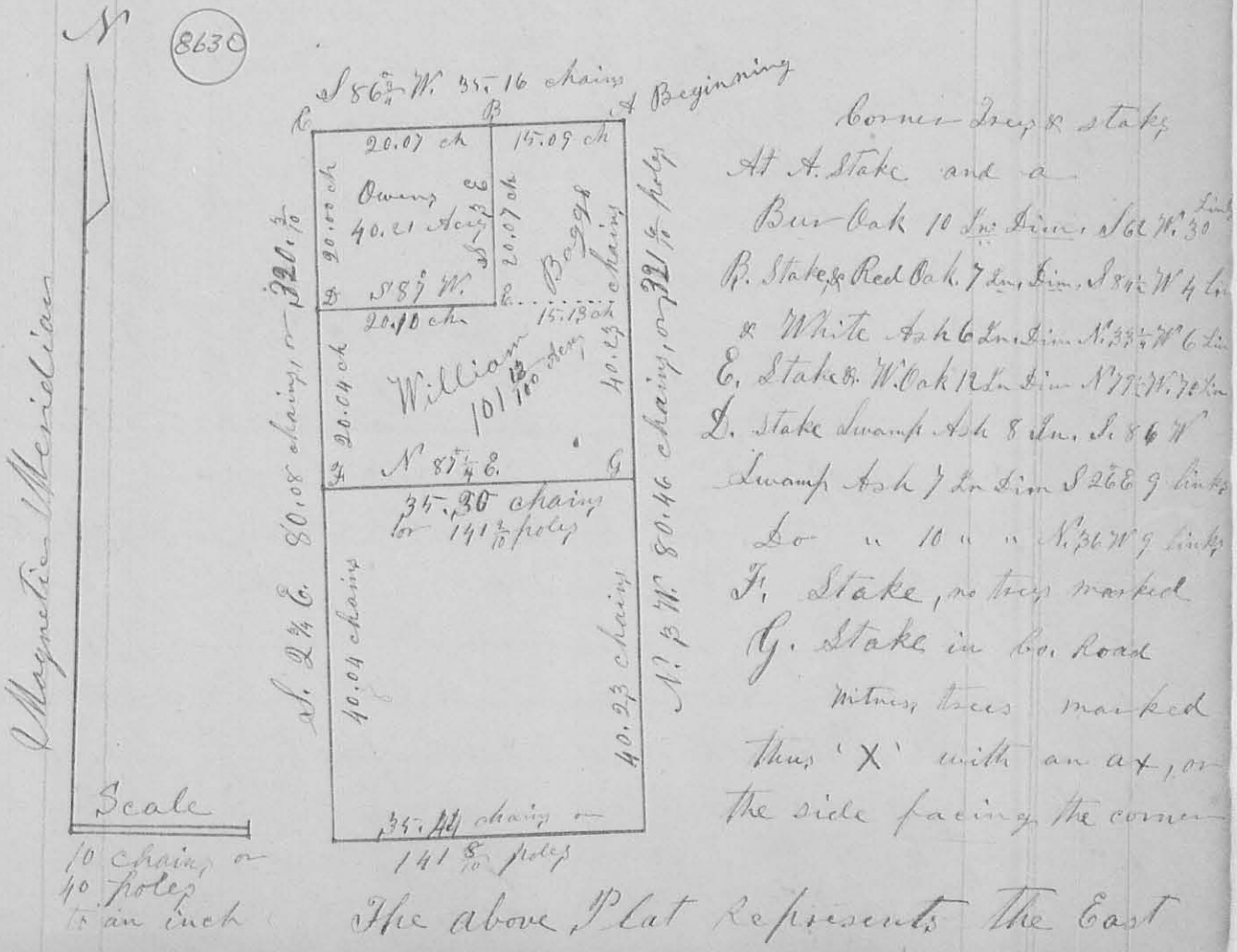


bearing N.  $1\frac{1}{2}$  E. 26  $\frac{79}{100}$  chains) and find that that part of the said tract of land lying & being in Logan County contains ninety seven acres & eighty nine hundredths of an acre ( $97\frac{89}{100}$  acres) and that part of the said tract of land lying & being in Union County contains seventy eight acres & thirty hundredths of an acre.

Note All the witness trees whose courses & distances are given in the foregoing notes, are marked thus 'X' in the side facing the corner.

Isaac Simpson }  
 Alex. Bolen } Chain Carrier  
 I hereby certify the foregoing Plat and report to be correct, J. C. Moore  
 Co. Surveyor of Logan Co. Va.

Survey No. 772 - V



fractional half of Section No 36, Town No. 6  
 South of Range No. 7 East, in Logan & Shelby Counties,  
 of the State of Ohio, as surveyed by me, H. C.  
 Moore, Co. Sur. of Logan Co., O., on the 3<sup>d</sup> & 4<sup>th</sup> days  
 of August A.D. 1858, for the purpose of finding  
 & establishing the lines & corners of the East fractional  
 half of the N.E. fractional quarter, and the S.W.  
 quarter of the N.E. quarter of said Sect No. 36  
 Town No. 6 & Range No. 7, for William Baggs,  
 who owns & resides upon the said land.

The bearing & length of the lines are marked  
 upon each, respectively, in the plat.

The corner trees are described in the notes  
 to the right of the plat.

Wm Baggs land containing  $101\frac{13}{100}$  Acres,  
 Schokey Marsh

Sin ledger Neal } Chain men } first day  
 George M<sup>c</sup> Bride m<sup>k</sup>.

Henry Franks }  
 Josiah Rush } Chain men } 2<sup>d</sup> day  
 Wm Baggs m<sup>k</sup>.

James B. M<sup>c</sup> Laughlin } present both days  
 Hanson Owen }

I here by certify the foregoing plat  
 and Report to be correct, H. C. Moore, Sur. Logan Co., O.

8597

Survey No 793 } The Plat on the next page  
 is a representation of Humphreys Addition to the  
 town of Delraft, situated in the south side of Section  
 No. 7, of Town No. 2, & Range No. 14 E. M. R. S. in Pleasant  
 Township Logan Co. O. North of & adjacent to Robt's Addition  
 East to the same. The North lines of Lots Nos 4, 28, 29, 50  
 and "Mill Lot" are each 8 poles or 132 feet; The length  
 of the other lines of those Lots are marked on each upon the  
 plat. The other Lots are all 8. Each 4 by 8 poles